

City of Leavenworth, Kansas



**Combined 2009 and 2010 Annual Reports:
(October 1, 2008 – September 30, 2010)**

Kansas Permit No. : M-MO12-SN01

Federal Permit No. : KSR044011

August 29, 2011

TABLE OF CONTENTS

Section I. Executive Summary	3
Section II. Kansas Storm Water Report Form (Items A – E)	4
Section III. Recordkeeping and Reporting (Item F)	19
Appendix A: Example Publications	
City of Leavenworth Solid Waste Division Brochure	23
City Connections Newsletter Excerpts – Summer 2009.....	25
City Connections Newsletter Excerpts - Winter/Spring 2010.....	27
City Connections Newsletter Excerpt – Fall/Winter 2010	28
City Connections Newsletter Excerpt - Fall/Winter 2010.....	29
Adopt-a-Park Program.....	30
Arbor Day Proclamation	31
Spring Clean-Up Day Proclamation	32
Know The Code – Trash Disposal	33
Stormwater Regulation Correspondences	34

SECTION 1: EXECUTIVE SUMMARY

The City of Leavenworth has prepared this report through an interview process of city employees to summarize its actions towards improving the stormwater discharged through the Municipal Separate Storm Sewer System (MS4) to meet the requirements of the National Pollutant Discharge Elimination System (NPDES) Permit.

Through a combination of public education, maintaining or improving the existing infrastructure, and ensuring new development addresses stormwater quantity and quality concerns, the City of Leavenworth continues to make stormwater a priority in both existing and developing areas of the city.

Construction drawing reviews have proven especially effective in reducing pollutants in the stormwater. During the review process city staff was able to identify stormwater concerns prior to construction and make recommendations to improve stormwater quality and quantity. By introducing Best Management Practices (BMPs) during the planning phase, pollution can be contained to the site and removed or allowed to degrade naturally over time.

Less than optimum results were achieved in educating residential developers and Home Associations on the importance of BMPs in the community. Although some aspects of the Storm Management Program stress the benefits of BMPs, these individuals may not realize the function and maintenance requirements of structural BMP's such as detention ponds. The city has begun to remind existing detention pond owners of their responsibilities to maintain these facilities and that actions by the city to enforce upkeep will follow if problems persist.

The leaf collection program has proven challenging but is one of the most successful aspects of the storm management program. It successfully removes debris before it enters the storm sewer system which prevents leaves from constricting or blocking the sewer during rain events. Additionally, the leaves are collected at the city brush site and composted rather than sent to the city's transfer station. However, rain and snowfall on leaves that have been raked to the curb make vacuum collection difficult for weeks at a time in the fall, which places a short time table to complete the collection on city crews.

The most challenging aspect of the stormwater management plan is preparing for the adoption of an updated stormwater infrastructure manual. The Public Works staff has been reviewing KC APWA section 5600 and the Mid America Regional Council (MARC) BMP manual; additionally, Leavenworth Public Works has contacted several metropolitan cities for authorization to include portions of their published city standards in an updated construction manual for the City of Leavenworth. The new standards will most certainly improve the water quality discharged from the city sewer system, but these changes will require additional material be supplied to consultants, developers, and owners.

Leavenworth's commitment to its Stormwater Management Program has led to a well educated general public regarding the importance of stormwater quality as well as improved upon the city's infrastructure in both established and developing areas of the city.

C. Stormwater Management Program

		Place mark in the appropriate box	
		Yes	No
1.	Has the Stormwater Management Plan (SMP) been developed?	<input checked="" type="checkbox"/>	<input type="checkbox"/>
a.	If yes, Has it been submitted to KDHE as required by the permit?	<input checked="" type="checkbox"/>	<input type="checkbox"/>
b.	If no, it needs to be developed and submitted to KDHE preferably with this annual report but no later than February 1, 2011. Additionally, if the SMP requires modification as required by the last paragraph in Part II of the permit, the modified SMP must be submitted with this annual report..		

D. Total Maximum Daily Load (TMDL) Best Management Practices

The permit requires the implementation of these BMPs prior to October 1, 2006.

		Place mark in the appropriate box.		
		Yes	No	Not Applicable
1.	Were any best management practices (BMPs) intended to attenuate the discharge of TMDL regulated pollutants implemented? See your permit to determine if TMDL regulated pollutants are listed for the receiving streams affected by your stormwater system.	<input type="checkbox"/>	<input type="checkbox"/>	<input checked="" type="checkbox"/>
2.	List all of the BMPs intended to attenuate the discharge of TMDL regulated pollutants as identified in the SMP and provide the requested information on the following table.			

E. Stormwater Management Program Requirements (Six Minimum Control Measures)

1. Public Education and Outreach

The permit requires the implementation of these BMPs prior to October 1, 2005. List all of the public education and outreach BMPs as identified in the SMP and provide the requested information in the following table.

BMP ID Number	Brief BMP Description	Measurable Goal(s)	Progress on Achieving Goal(s) (Measured Result)
1.1	Maintain a Library of Stormwater Educational Materials.	Provide copies of the Stormwater Master Plan for viewing at the Public Library.	The Stormwater Master Plan has remained available to the public at the Leavenworth Public Library.
1.2	Develop a Series of Educational Brochures on the Impacts of Stormwater Pollution.	Distribute brochures and make them available to the public.	The City of Leavenworth's newsletter "City Connection" informs Citizens on city projects and programs such as leaf collection, snow removal, Adopt-a-Park, and waste collection services.
1.3	Provide Information to Citizens regarding the City of Leavenworth Solid Waste Division.	Distribute trash bags to citizens with proper disposal handout.	Trash bags are distributed twice per year with additional bags available at the city offices. Flyers available through the City advertise the brush site, the recycling center, Free First Saturdays, and trash regulations.
1.4	Issue Press Release Regarding Local Stormwater Issues	Complete and send out monthly Press Releases to local media outlets.	Information regarding solid waste collection scheduling, snow removal operations, the Spring Clean Up and updates on stormwater issues are now also being released through social media such as Twitter and Facebook to Leavenworth Residents.

1.5	Show Stormwater Information on Local TV Station	Broadcast community forums, in which continued water quality discussions take place.	The City Channel 2 recurring schedule includes televised City Commission, Planning Commission, and Preservation Commission meetings in which current issues related to Water Quality are debated. First City Focus has presented short televised segments of interviews with public works employees in many areas including Stormsewer Construction and video inspection.
1.6	Provide Educational Stormwater Information on City Website.	Establish a series of informational articles addressing topics on Stormwater education.	The City website provides access to the City Connection Newsletter mentioned earlier, links to First City Focus episodes on YouTube, as well information on the Public Works Department for easy access to work schedules and regulations. Items incorporated into the updated Stormwater Design Manual will be highlighted upon adoption. This Stormwater Report will be accessible on the city website to the general public.

2. Public Involvement and Participation

The permit requires the implementation of these BMPs prior to October 1, 2005. List all of the public involvement and participation BMPs as identified in the SMP and provide the requested information in the following table.

BMP ID Number	Brief BMP Description	Measurable Goal(s)	Progress on Achieving Goal(s) (Measured Result)
2.1	Hold Public Meetings Regarding Stormwater Issues.	Provide the public an opportunity to discuss related Water Quality topics.	On-going stormwater issues are discussed at City Planning Commission and City Council Meetings in an Open Forum Environment.
2.2	Improve Lines of Communication with the Public.	Integrate contemporary methods of providing and receiving information to the Public.	The City Information Officer has opened up accounts with Facebook, Twitter, and Youtube which distributes information regarding city services, current city projects, and educational material. City staff email addresses and phone numbers are available on the city website.
2.3	Develop a Stormwater Stenciling Program	Advertise to the Public the importance of Stormwater Management and the need for storm drain stenciling within the City.	Local volunteers such as the Boy Scouts have helped stencil storm inlets throughout the City. One round of stenciling has been completed.
2.4	Continue to Maintain and Clean Trash and Debris from Local Streams.	Establish an Adopt a Stream program.	City crews continue to clean streams on public property throughout the City. Volunteers have been especially effective on the Annual Spring Clean Up day at removing Trash from City Property. An Adopt a Park program has been established and functions by assigning organizations to specific parks throughout the city.

2.5	Establish a Reforestation Program.	Continue to promote Arbor Day to increase community involvement.	The City of Leavenworth continues to be part of the Tree City USA program sponsored by the Arbor Day Foundation. The Legacy Tree Program allows for a tree to be planted and dedicated in public spaces. Arbor Day is celebrated yearly.
2.6	Collect rainfall and streamflow data to analyze citizen complaints	Increase data sources to include more streamflow data and weather stations.	Davis Pro Weather stations have been installed at City Hall and the Treatment Plant. The stations record data which is made available online to the Public. Increased data allows for city staff to better analyze flooding events and address the concerns of the public.

3. Illicit Discharge Detection and Elimination

The permit requires the implementation of these BMPs prior to October 1, 2007.

	Place mark in the appropriate box.		
	Yes	No	Not Applicable
1. Has a program/plan been developed and is it presently implemented to detect and address illicit/prohibited discharges into the MS4?	<input checked="" type="checkbox"/>	<input type="checkbox"/>	
2. Has a map of the MS4 been developed, showing the location of all outfalls, either pipes or open channel drainage, showing the names and location of all streams or lakes that receive discharges from those outfalls?	<input checked="" type="checkbox"/>	<input type="checkbox"/>	
3. The permit requires the permittee enact certain ordinances or resolutions if the permittee has such authority. Has an ordinance or resolution to prohibit non-stormwater discharges into the storm sewer system been enacted? Date Effective: <u>1999</u>	<input checked="" type="checkbox"/>	<input type="checkbox"/>	<input type="checkbox"/>
4. Has a copy of the ordinance or resolution been submitted to KDHE as required by the permit?	<input type="checkbox"/>	<input type="checkbox"/>	<input checked="" type="checkbox"/>
5. Have public employees, businesses, and the general public been informed of hazards associated with illegal discharges and improper disposal of waste?	<input checked="" type="checkbox"/>	<input type="checkbox"/>	
6. List all of the illicit discharge detection and elimination BMPs as identified in the SMP and provide the requested information in the table on the following page.			

Illicit Discharge Detection and Elimination

BMP ID Number	Brief BMP Description	Measurable Goal(s)	Progress on Achieving Goal(s) (Measured Result)
3.1	Stormsewer Mapping	Continue to update existing stormsewer structures as well as add new development structures to the city mapping systems.	Previous stormsewer mapping was completed in AutoCad. The city is moving in the direction of creating a more accurate GIS Mapping system of storm structures that can be utilized without a Cad application. Public Works has 1 Dedicated Full-Time Employee to GIS Mapping.
3.2	Stormsewer Maintenance and Inspection	Provide dry weather storm sewer inspection.	A 2 Men Crew is devoted to stormsewer inspection Full-time. The crew provides periodic review of storm infrastructure, responds to public complaints, and provides maintenance for the storm system.
3.3	Inspection of Sanitary Sewer Systems	Inspect residential and commercial sanitary systems for improper discharge into storm drains.	The City has purchased a new camera truck. The capabilities of the camera system have been featured in an episode of First City Focus which is available on the City website and YouTube.
3.4	Procedural Training for City Staff.	City inspectors shall attend annual continuing educational programs.	City inspection staff attend continuing educational programs as required.
3.5	Establish a Program for Household Hazardous Waste Disposal.	Provide pick up for household hazardous waste on a regular Basis.	Used motor oil may be dropped off at the City of Leavenworth recycling center and all other household hazardous waste may be dropped off at the Leavenworth County Transfer Station.

4. Construction Site Stormwater Runoff Control

The permit requires the implementation of these BMPs prior to October 1, 2007.

	Place mark in the appropriate box.		
	Yes	No	Not Applicable
<p>1. The permit requires the permittee enact certain ordinances or resolutions if the permittee has such authority. Has an ordinance or resolution to address construction site runoff from new development and redevelopment projects been enacted? Date Effective: <u>1999</u></p>	<input checked="" type="checkbox"/>	<input type="checkbox"/>	<input type="checkbox"/>
<p>2. Has a copy of the ordinance or resolution been submitted to KDHE as required by the permit?</p>	<input checked="" type="checkbox"/>	<input type="checkbox"/>	
<p>3. Has a procedure or program been developed which requires construction site owners or operators to implement appropriate erosion and sediment control best management practices?</p>	<input checked="" type="checkbox"/>	<input type="checkbox"/>	
<p>4. Has a procedure or program been developed which requires construction site owners or operators to control waste such as discarded building materials, concrete truck washout, chemicals, litter, and sanitary waste at the construction site that are likely to cause adverse impacts to water quality?</p>	<input checked="" type="checkbox"/>	<input type="checkbox"/>	
<p>5. Has a procedure been developed that requires site plan review which incorporate consideration of potential water quality impacts?</p>	<input checked="" type="checkbox"/>	<input type="checkbox"/>	
<p>6. Has a procedure been developed for receipt and consideration of information submitted by the public?</p>	<input checked="" type="checkbox"/>	<input type="checkbox"/>	
<p>7. Has a procedure been developed for site inspection and enforcement of control measures?</p>	<input checked="" type="checkbox"/>	<input type="checkbox"/>	
<p>8. List all of the construction site stormwater runoff control BMPs as identified in the SMP and provide the requested information in the table on the following page.</p>			

Construction Site Stormwater Runoff Control

BMP ID Number	Brief BMP Description	Measurable Goal(s)	Progress on Achieving Goal(s) (Measured Result)
4.1	Construction Specifications and Standard Details.	Continue to develop and update the city specifications and design criteria.	Standard details and design criteria are being updated to incorporate Best Management Practices suitable for this Area. The MARC BMP Manual as well as the specifications of several surrounding municipalities are being utilized in developing an updated manual.
4.2	BMP Fact Sheet	Develop BMP Guidelines and Distribute Materials to Developers.	The MARC BMP Manual and APWA design guidelines are readily available online. Upon adoption of an updated infrastructure manual, consulting firms will be made aware of changes to the code.
4.3	Construction Drawing Review	Require city review of all construction projects to ensure design addresses stormwater concerns.	All new residential and commercial developments are reviewed by city staff for stormwater concerns. BMPs have been incorporated into new development by consulting firms. NOI permits are required on projects that disturb areas in excess of 1 acre and require that a StormWater Pollution Prevention Plan (SWPPP) be developed.
4.4	Pre-Construction Meetings with Owner and Contractor.	Require meetings with owner and contractor prior to commencement of grading operations.	Pre-construction meetings have been conducted by city staff with contractors and developers on all new developments to discuss the implementation of proper erosion controls.

4.5	Construction Site Inspection and Enforcement	Increase the frequency of inspections and develop a site checklist.	City inspection staff checks construction sites a minimum of once a week. In addition, after a half inch or greater rainfall the site's BMPs functionality are checked. Stop work orders are issued if site erosion control measures are not in compliance and remedied in a timely manner. Temporary controls remain onsite until an acceptable grass stand is established.
4.6	Staff Training	Conduct monthly meetings with inspection staff and provide training to new staff	Meetings occur weekly on Wednesdays to discuss on going projects. New inspection staff members would be trained by experienced in-house inspection staff.

5. Post-Construction Site Stormwater Management in New Development and Redevelopment

The permit requires the implementation of these BMPs prior to October 1, 2007.

		Place mark in the appropriate box.	
		Yes	No
1.	The permit requires the permittee enact a program to address post-construction stormwater runoff from new development and redevelopment.		
The program developed to manage stormwater in new development and redevelopment projects must include the following elements:			
a.	strategies which include a combination of structural and/or non-structural BMPs,		
b.	measures to ensure adequate long-term operation and maintenance of BMPs.		
c.	BMPs to prevent or minimize adverse water impacts.		
	Has a post construction stormwater runoff program been implemented?	<input checked="" type="checkbox"/>	<input type="checkbox"/>
2.	List all of the post-construction site stormwater management in new development and redevelopment BMPs as identified in the SMP and provide the requested information in the table on the following page.		

Post-Construction Site Stormwater Management in New Development and Redevelopment

BMP ID Number	Brief BMP Description	Measurable Goal(s)	Progress on Achieving Goal(s) (Measured Result)
5.1	Construction Site Inspection and Maintenance of Long Term Controls.	Increase inspections.	Sites are inspected on a Bi-Weekly schedule following construction to ensure BMP's such as gutter-buddies remain in working order. City has been working on informing detention pond owners on their responsibility of maintaining permanent facilities.
5.2	Protect sensitive areas, such as wetlands and riparian areas.	Maintain or increase open space.	As part of the Stormwater Regulations being developed, Stream Buffers along creeks within the city would decrease the encroachment of developments into riparian areas.
5.3	Promote non-structural best management practices.	Minimize impervious surfaces and disturbance of soils and vegetation.	City staff have focused on encouraging developers to minimize grading impacts, provide tree preservation, and address project BMP's early in the plan review process.
5.4	Construction Drawing Review	Require city review of all construction projects to ensure design addresses post construction storm water concerns.	All new residential and commercial developments are reviewed by City Staff. Additional measures addressing Stormwater Quality will be incorporated into the updated city specifications.

6. Pollution Prevention/Good Housekeeping for Municipal Operations

The permit requires the implementation of these BMPs prior to October 1, 2005. List all of the pollution prevention/good housekeeping for municipal operations BMPs as identified in the SMP and provide the requested information in the following table.

BMP ID Number	Brief BMP Description	Measurable Goal(s)	Progress on Achieving Goal(s) (Measured Result)
6.1	Storm Sewer and Catch Basin Cleaning	Inspect and clean all storm sewer inlets on a quarterly basis.	Two Full Time employees utilize the city's vacuum truck to remove debris from storm sewer inlets.
6.2	Street Sweeping	Increase street sweeping rotations throughout the City.	Arterial Streets are required to be cleaned on a monthly basis, and residential streets must be swept twice per year. Leavenowrth's crews have met these goals and have cleaned ALL streets a minimum of 4 times in 2009 and 2010.
6.3	Snow Removal Operations	Upgrade the city's Snow removal equipment.	The salt trucks are now ground speed controlled which allows for a more precise application rate of the salt/sand mix, and the ratio modified to reduce the amount of materials applied to the roadways.
6.4	Leaf Pick Up	Establish a city wide program offering leaf pick up.	A program has been established and two vacuum trucks purchased to remove leaves that citizens rake to the curb. Leaves are collected and composted at the Brush site.

F. Recordkeeping and Reporting

Attach a report which addresses the following subjects:

1. A general assessment of the appropriateness of the various BMPs included for each of the major program elements as follows:
 - a. TMDL regulated pollutants
 - b. Public Education and Outreach
 - c. Public Involvement and Participation
 - d. Illicit Discharge Detection and Elimination
 - e. Construction Site Stormwater Runoff Control
 - f. Post-Construction Site Stormwater Management in New Development and Redevelopment
 - g. Pollution Prevention/Good Housekeeping for Municipal Operations

Issues which may be addressed include:

- a. Are the BMPs appropriate for the local population?
 - b. Are the BMPs appropriate for the pollution sources?
 - c. Are the specific concerns related to the local receiving waters that may justify a change in BMPs?
2. An assessment of the effectiveness of the BMPs towards achieving the statutory goal of reducing the discharge of pollutants to the Maximum Extent Practicable (MEP).
3. Provide a summary of results of information collected and analyzed, if any, during the reporting period used to assess the success of the SMP. If the MS4 has tested the stormwater entering a receiving stream or the water in the receiving stream, please provide the laboratory test results and a map showing the location of the sampling. Also, provide an explanation of the conditions under which the sample was taken (recent rainfall amounts and dates, estimated amount of stormwater running in the ditch (ditch barely running, quarter full, half full, full, overflowing,) and stream conditions (barely running, quarter full, half full, full, overflowing its banks) and any other conditions that may help characterize the situation at the time the samples were taken. An explanation as to why the sample was taken or what the permittee intended to show would be helpful in understanding the test results.
4. Provide a summary of the planned minor changes in stormwater activities to accomplish the SMP designated goals that are scheduled to be undertaken during the next annual reporting cycle. Examples would be emphasizing (or de-emphasizing but not elimination) of a significant action to accomplish a designate goal – for instance, changing the direction of public education from annual public meetings to education of school children.
5. Provide a list of proposed major changes to the SMP. This should be a list of major changes in direction for any of the designated goals of the SMP. It does not include the minor changes in stormwater activities (listed in item 4) being planned to accomplish a previously designated goal. Examples of a major change would be the implementation of new BMPs and/or the deletion of a BMP. Include a projected schedule for the month or quarter when the BMP will be either implemented or discontinued.
6. Provide a list of other municipalities/contractors, if any, which will be responsible for implementing any of the program areas of the SMP.

SECTION III: Recordkeeping and Reporting

1. *A general assessment of the appropriateness of the various BMPs included for each of the major program elements as follows:*

- a. **TMDL Regulated Pollutants.** Not Applicable
- b. **Public Education and Outreach.** The City of Leavenworth educates the public on stormwater issues through many different media in order to reach the maximum number of people. New means of increasing the public awareness of stormwater issues have expanded from the press releases, public service announcements, the city newsletter, and the City Channel from years past to include increased access to material on the city's website, Facebook posts, Tweets through Twitter, and videos available on YouTube. Much of the information that the city provides regarding stormwater and pollution control is available both on paper and electronically.
- c. **Public Involvement and Participation.** The city engages the public by calling for volunteers to work on local initiatives through the several lines of communication discussed earlier. The Annual Spring Clean Up has been effective in reducing pollution as well increasing the public awareness of stormwater BMPs and other city programs. Free drop-off of large items on Free Saturdays has been limited to the First Saturday of each month due to lack of interest in the program which originally included the first and third Saturdays of the month. Calls for civic organizations to clean and make improvements to city parks throughout the year are being made through an established Adopt-a-Park program. Arbor Day is observed yearly and the city continues to be part of the Tree City USA program. Although an Adopt-a-Stream program has not been established, cleaning along streams has occurred in public spaces through the above established programs.
- d. **Illicit Discharge Detection and Elimination.** In order to control improper disposal of waste to the stormsewer system, the City of Leavenworth makes material available through flyers and online regarding household hazardous waste and its proper disposal and by inspecting the existing storm infrastructure. A more accurate mapping of the city's storm sewers has been initiated and collected data is available to city employees through the city intranet. City crews are also well equipped with a new camera truck to aid in the investigation of possible sanitary connections to the storm sewer system.
- e. **Construction Site Stormwater Runoff Control.** Plan review and construction site inspection are the city's first line of defense in protecting water quality in developing areas. Weekly meetings are held in the Public Works office to review stormwater issues on current city projects both in the design and construction phase. The city is working on updating the city design criteria to incorporate guidelines similar to the MARC BMP Manual.
- f. **Post-Construction Site Stormwater Management in New Development and Redevelopment.** Educating the owners of privately owned stormwater facilities of their maintenance responsibilities has been stressed over this review period. By first informing homeowner associations of their obligation's importance, the city hopes that the storm facilities return to a more functional level without enforcement being

required. Furthermore, the inclusion of stream buffers in new city regulations would reduce encroachment of developments on local streams.

- g. **Pollution Prevention/Good Housekeeping for Municipal Operations.** The successful leaf collection program, a more efficient application of salt and sand to the roadways, and street sweeping operations are all effective in decreasing pollutants from entering the storm sewer system. Beyond these steps the city has 2 full time employees dedicated to the cleaning of storm inlet structures with a vacuum truck.

2. *An assessment of the effectiveness of the BMP's towards achieving the statutory goal of reducing the discharge of pollutants to the Maximum Extent Practicable (MEP).*

The City of Leavenworth Public Works Department is assessing the effectiveness of the BMPs to be included in an updated stormwater design manual to ensure that constructed BMP's can work effectively with the soils present within the city. In the past, permanent stormwater facilities in the city of Leavenworth treated stormwater quantity, but the city will be encouraging the implementation of more stormwater quality treating BMPs under the updated standards. Temporary BMPs installed during construction continue to work effectively in reducing sediment runoff.

3. *Provide a summary of results of information collected and analyzed, if any, during the reporting period used to assess the success of the SMP.*

Stormwater from the MS4 have not been tested.

4. *Provide a summary of the planned minor changes in stormwater activities to accomplish the SMP designated goals that are scheduled to be undertaken during the next annual reporting cycle.*

Add a stormwater information link to the Public Works webpage as a source of information relating to stormwater education and programs available to the public.

Promote the importance of functioning detention facilities and proper maintenance to local home associations to improve pond operation and reduce erosion.

5. *Provide a list of proposed major changes to the SMP.*

Currently, the City of Leavenworth calls for design consultants to follow KC Metro APWA Section 5600 Design Guidelines. The City is working on adopting BMP guidelines more closely resembling MARC's BMP Manual, which has been adapted by several cities in the KC Metro Area. Leavenworth is reviewing the guidelines these cities have adopted in forming their own code to be applied to new developments.

6. *Provide a list of other municipalities/contractors, if any, which will be responsible for implementing any of the program areas of the SMP.*

G. Certification

"I certify under penalty of law that this document and all attachments were prepared under my direction or supervision in accordance with a system designed to assure that qualified personnel properly gather and evaluate the information submitted. Based on my inquiry of the person or persons who manage the system, or those persons directly responsible for gathering the information, the information submitted is, to the best of my knowledge and belief, true, accurate, and complete. I am aware that there are significant penalties for submitting false information, including the possibility of fine and imprisonment for knowing violations."



Signature of Permittee (legally responsible person)

9-2-11

Date Signed

J. SCOTT MILLER

Name (printed)

CITY MANAGER

Title

40 CFR 122.22 Signatories to permit applications and reports.

(a) Application. All permit applications shall be signed by either a principal executive officer or ranking elected official. All reports required by permits, and other information requested by the Director shall be signed by a person described in paragraph (a) of this section, or by a duly authorized representative of that person.

Submit this report to:

KANSAS DEPARTMENT OF HEALTH & ENVIRONMENT
Technical Services Section
1000 SW Jackson Street, Suite 420
Topeka, KS 66612-1367

APPENDIX A

EXAMPLE PUBLICATIONS

BRUSH SITE
1803 S 2ND Street

The City of Leavenworth Solid Waste Division operates a Brush Site for residents to drop off organic materials. The site is open March through November, Tuesday through Saturday from 8:00 am to 4:00 pm with the last load accepted at 3:50 pm. The Brush Site is closed from December through February and is open on Saturdays only. For the two weeks following Christmas, the Brush Site is open regular hours to accept Christmas trees for recycling. The Brush Site supplies free mulch, composted dirt, backfill dirt and free firewood to residents during regular business hours. To pick up mulch and compost, residents need to arrive at the Brush Site in a vehicle that can support the weight of the mulch or compost and the vehicle must have sides. The staff will place the materials requested in your vehicle with a bobcat as time permits once a waiver is signed releasing the City of Leavenworth of any liability. Residents are welcome to load their vehicles by hand with their own tools. Leaves and grass clippings are always accepted free-of-charge. All other organic materials are accepted according to the fee schedule. On the 1st Saturday of each month, the Brush Site is free to City of Leavenworth residents. Commercial contractors and non-residents will still need to pay the nominal fee to dump any materials.

Recycling Center One Block West of Municipal Service Center

The City of Leavenworth operates a Recycling Center one block west of the Municipal Service Center, 790 Thornton, at the intersection of Lawrence and Halderman Streets. The Recycling Center is open Tuesday through Saturday from 8:30 am to 12:30 pm.

The Recycling Center is free, but cannot accept commercially generated materials. Commercial contractors can contact the Leavenworth County Recycling Facility and Transfer Station located at 13523 Gilman Rd in Lansing. For additional information about the County Transfer Station, please call 913/727-2858 or 913/727-3000. The County Transfer Station's operational hours are Mon. ~ Fri. 8 am to 4 pm and Sat. 8 am to 2 pm.



E-Waste Recycling

The City of Leavenworth is the first city in Kansas to offer e-waste recycling through our popular "FREE Saturdays" at the Municipal Service Center. Citizens can drop off materials such as TV's, VCRs, computers and video game machines on the first Saturday of each month at the Municipal Service Center. E-waste recycling containers are located at the Service Center's north gate on Lawrence Ave, one block south of Pennsylvania just east of 10th Ave. This site is open the first Saturday of every month from 8:30 am to 12:30 pm for residential customers.

The Recycle Center is open to the public all year and accepts the following items:

- Tin & aluminum cans
- Car Batteries & Rechargeable Batteries (i.e. 9-volt batteries and batteries from hand tools) Battery sizes D, C, A, AA and AAA batteries are accepted at the Leavenworth County Transfer Station on Gilman Rd in Lansing.
- Old Cell Phones
- Used Automotive Oil
- Plastics—We cannot accept motor oil bottles, pesticide/herbicide bottles, automotive product bottles (brake fluid, windshield washer fluid, etc), plastic bags, plastic toys, expanded #6 polystyrene materials (packing materials such as peanuts or packaging sheets/blocks), PVC pipe or plastic sheet materials.
- Glass—clear, brown or green
- Paper products (cardboard, magazines, paper, etc.)

We ask that you remove all lids and neck rings and clean and rinse any cans, plastic bottles and glass items.

BRUSH SITE FEES	
Car or Van	\$2.00
Pickup Truck	\$5.00
Flatbed/Single Axle Dump Truck	\$15.00
Dual Axle Dump Truck/Chipper Box	\$25.00
Trailers:	
1' to 8'	\$5.00
8' to 16'	\$10.00
Over 16'	\$10.00
(plus \$1.00 for each foot over 16')	

CITY OF LEAVENWORTH



Solid Waste Services

Trash Services, Recycling Center, Brush Site, & Free Saturday Program



Pick up day will be:
 Monday / Tuesday / Wednesday / Thursday
Bags must be on curb by 7:00 A.M.

City of Leavenworth Solid Waste Services

Weekly Garbage & Trash Pick Up

Garbage and household trash cannot be left in the yard and must be disposed of properly. This includes auto parts, appliance, furniture, building materials, tires, cardboard, plastics, or any other materials. Tree trimming and fallen limbs must be disposed of within a week. Trash cannot be set out prior to 24 hours in advance of your regular trash day. It is unlawful to burn garbage within the City.



BAGS ONLY

FREE Saturdays

On the FIRST Saturday of each month, the City of Leavenworth offers "FREE Saturdays." This event is an excellent opportunity for residents to utilize the City's services at no charge. On FREE Saturdays the Brush Site is open from 8:00 am to 4:00 pm; and dumpsters are provided for residents at the north entrance of the Municipal Service Center for residents to drop-off materials such as large appliances, furniture, trash and tires, between the hours of 8:30 am to 12:30 pm. The Recycle Center is open normal hours from 8:30 am to 12:30 pm for drop off of recyclable items. Any time the FREE First Saturday falls on a holiday it will be held on the 2nd Saturday of that month.

We provide residential pick-up by City crews once each week. The City does not work on New Year's Day, President's Day, Martin Luther King Day, Memorial Day, July 4th, Labor Day, Veteran's Day, Thanksgiving Day and Christmas Day. When one of these holidays occurs between Monday and Thursday, the normal trash collection day will move one day later. The charge for the trash service appears on your water bill each month; the rate of \$15.40 per unit (residence) is effective as of 12.01.10. Please review your water bill to ensure you are paying for the appropriate number of units. Should you have any questions, please call our office at 682-0650, week days from 7:30 A.M. to 4:00 P.M. **Please place refuse in disposable bags (not trash cans) securely tied and set next to the curb by 7:00 a.m. on your collection day. Trash cans are not allowed on the curb. Trash bags will not be picked up out of trash cans. If you have a container to throw away, please put a note on it that says "throw away" and make sure it weighs less than 60 pounds. City of Leavenworth Ordinance requires that you do not place your refuse out at the curbside more than 24 hours before your regular pick up day, as occasionally there are dogs and other small animals at large which might tear up the bags. However, trash must (by ordinance) be on the curb by 7:00 a.m. of your collection day to ensure pick up on that day. **DISPOSAL OF SYRINGES, BROKEN GLASS OR OTHER SHARP OBJECTS:****

Replace the protective cover on syringes after use and place them or other sharp items in a sealed box or can. Mark the container "Sharp Objects" and place beside the refuse (not in a bag) at the curb for collection. You may also call the Service Center (682-0650) the day prior to your collection and we will post a notice for the crews collecting your address.

Help us keep your refuse collectors safe!

Brush, tree limbs, wood and carpet will be collected with your refuse; however, these items must be cut into five foot lengths and either boxed, bagged or tied into bundles of less than 60 pounds.

BOXES: If you have hired a moving company you may ask them if they will return to pick up the packing boxes, if not, the city will pick them up with your regular refuse; however, we ask that you break down as many boxes as possible and tie them into bundles.

Almost everything, except hazardous materials and large appliances will be picked up with your regular refuse. If you have a large appliance you wish to discard, call the Municipal Service Center at 682-0650 by 4:00 p.m.

Thursday and we will pick it up on Friday. If you have household chemicals or cans of paint to dispose of, you may call the County Transfer Station at 727-2858 to verify their guidelines.

BAGS: A package of 50 bags (an average of two bags per week) are furnished and delivered to your home twice a year (usually the last Saturday of March and September). If you should run out of bags between deliveries, you may use comparable bags from any store, or you can purchase bags at the City Clerk's Office, City Hall, 100 N. 5th Street, at a cost of \$6.00 for a package of 50 (30 gallon) bags.

Special Item & Bulk Pick Up

The City of Leavenworth will pick up most furniture items, TV's, mattresses and box springs with the regular trash. Large, metal items such as appliances, metal desks and miscellaneous heavy metal items will be picked up on Fridays. To schedule a pick up, please call the Service Center at 682-0650 no later than 3:00 pm on Thursday for pick up on Friday.

THE FOLLOWING ARE IMPORTANT PHONE NUMBERS TO REMEMBER:

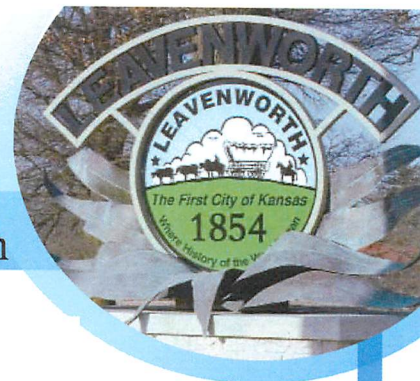
EMERGENCY POLICE/FIRE/EMERGENCY	911
MEDICAL SERVICES	
POLICE ADMINISTRATION	651-2260
CITY HALL	682-9201
FIRE ADMINISTRATION	682-3346
MUNICIPAL SERVICE CENTER (SOLID WASTE & STREET)	682-0650
PARKS AND COMMUNITY ACTIVITIES	651-2203
ANIMAL CONTROL	682-0268
WATER POLLUTION CONTROL	682-1090

(For sewer line problems this number is answered 7 days a week, 24 hours a day)

For questions regarding your weekly trash pick up, call the Municipal Service Center at 913/682-0650

City Connection

A Publication for the Residents of Leavenworth



August 2009

Police Department Begins Training Cadets

■ New program will offer experience and law enforcement training to graduating seniors who are interested in a career in public safety.

In July, the City of Leavenworth began a new era in law enforcement. The city's first Police Cadet Program accepted its first two students, and, hopefully begins the start of what looks to be a mutually beneficial program for both the police department and local high school students interested in law enforcement.

Hannah McMillin and Damon Manderscheid were chosen to participate in this inaugural program that affords local high school graduates an opportunity to observe, participate, lead and learn in a wide variety of police department operations. Manderscheid and McMillin will participate in this three-year program while attending college. After they complete their education and are 21 years of age, they will have the opportunity to apply for job positions within the LVPD.

"This program provides a mentor for



Recent LHS graduates, Damon Manderscheid and Hannah McMillin, were selected as the city's first class of Police Department Cadets. They are shown with Chief Patrick Kitchens.

students who want to go into the law enforcement profession," said Chief of Police Pat Kitchens. "I believe this is the greatest profession on earth and I look forward to training the next generation to protect and serve our community and nation."

Rental Registration Program

The City of Leavenworth's Rental Registration Program began in April. All rental properties in Leavenworth must be registered with the city by October 1, 2009. An initial fee of \$20 for all property titled under the same name is required, failure to register by October 1 will result in a \$40 fee. A registration violation has a minimum penalty of \$150. Complete details of the program are available online at www.lvks.org.

The City Connection is published by the City of Leavenworth's Public Information Office.



Curbside Leaf Pick-Up Program to Begin Again

The city's annual curbside leaf pick-up program will begin again this fall. Depending on weather, the program will begin in early November and the city will again attempt to do at least two passes through the entire city. The city is sectioned off into a grid-pattern (at right). The crews will begin work in Zone 1 and continue through each zone; all north, south, east and west streets are covered before moving to the next zone. Last year, the weather caused many problems. In order to help residents keep up with the most current schedule, the Public Information Office will be e-mailing a weekly update on Fridays notifying residents where crews will work the following week. To sign up for the e-mail update list, contact mgilliland@firstcity.org.



Leavenworth Parks & Recreation
123 S. Esplanade
Leavenworth, KS 66048

PRE-SORT STANDARD
U.S. POSTAGE
PAID
Leavenworth, KS
Permit No. 67

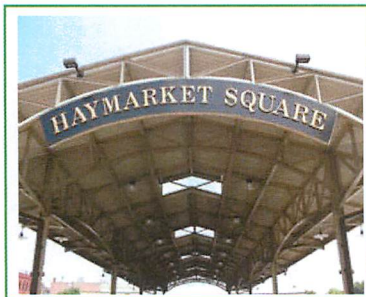
Postal Customer
Leavenworth, KS 66048

Construction Project Updates



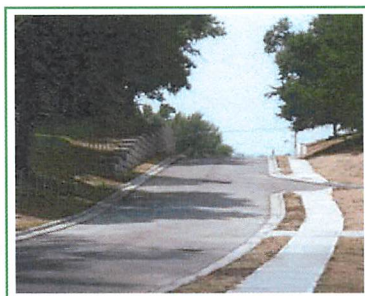
The **US-73 and 20th Street** Interchange project officially began on June 8. This \$6.1 million project extends 20th Street north of US-73 and connects to the west gate of Fort Leavenworth.

It constructs an interchange at 20th Street and US-73 and removes 18th Street. This project is expected to take 18 months to complete.



The **Three Mile Creek Trail and Haymarket Square Pavilion** are now officially open. The trail's pathway connects Haymarket Square, at 7th and Cherokee Streets, to Leavenworth Landing Park on the Missouri River. The pavilion at Haymarket Square is an open-air structure that will be used for the Farmers' Market and other special events and venues such as concerts and festivals. The pavilion is available for rent by residents or non-residents. Call (913) 682-9201 for rental information.

The **Limit Street Improvement Project** was awarded in November to Linaweaver Construction and will be open for traffic by early August. This project widened Limit Street between 14th Street and Tonganoxie Road. As part of the project, the entire street was widened, new curbs and gutters were added and a retaining wall was put in place on the north side of Gatewood Cemetery. This project will improve the safety and visibility at the intersection of 15th and Limit Street.



The **Leavenworth Public Library Expansion** project will add an additional 4,000 square-feet to the existing structure. This project was funded through the one-cent county-wide sales tax. This project allows the Public Library to expand its facility, at their current location, add an additional parking lot and upgrade the mechanical HVAC systems. Interior construction is complete; the entire project, including landscaping and exterior work should be complete by mid-August.

The **Delaware Streetscape** project is complete! The project was completed in early May and will have a fresh layer of asphalt added in the street corridor in early August. The project replaced nearly all the sidewalks in the project area to eliminate trip hazards, upgraded the utility lines for water and gas, added period-style lighting to the historic downtown and constructed additional planters for flowers and shrubs. Thank you to all the downtown businesses for their patience and support during this project.



Want to stay informed about the City's latest projects, programs and services? Sign up for **Leavenworth e-News** - a free service that delivers city news right to your e-mail inbox. Visit www.lvks.org to sign up.




See a Street Light Out?

The City of Leavenworth Street Division coordinates the repair of street lights that are out or in need of repair. To report outages, please call 682-0650.



Mowing Your Grass?

Please don't blow the clippings into the street. The City of Leavenworth needs your help to keep the city's storm drains clear. When mowing your grass, please make sure to not blow grass clippings into the street. When grass clippings go into the street, they eventually end up in our storm drains which can cause clogging and costly repair or maintenance. Instead, blow clippings into the yard and mulch up the clippings to fertilize your yard. Thank you for your help and support.



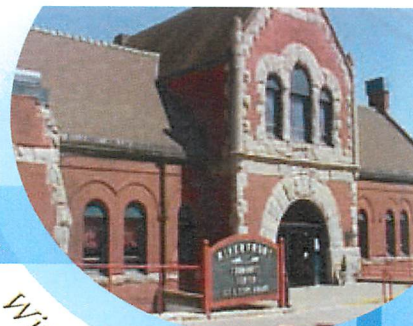
Mark your calendar...

The next scheduled city trash bag delivery is **September 26.**



Parks & Recreation

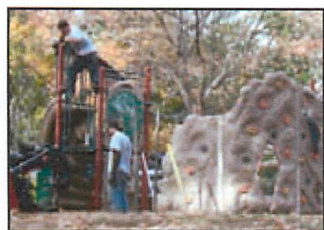
A Guide to Parks and Recreation Activities in Leavenworth



Winter/Spring 2010

Progress in the Parks

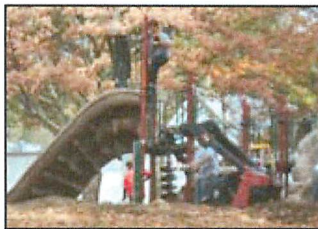
Thanks to a Community Development block grant and the assistance of the Community Development Advisory Board, the Parks Department was able to have the basketball courts at Bob Dougherty Park resurfaced at the end of August. In addition, with this same grant, state-of-the-art, age-specific playground equipment for both preschool-age and school-age children was purchased and installed in Jefferson Park in the fall. The playgrounds



incorporate walkways and benches around the perimeter and throughout the park.

The Parks

Department is also working on improvements at Wollman Park. A large picnic shelter will be erected at the old



Works Progress Administration (WPA) bathhouse site and will accommodate large gatherings. The shelter, which will be twice as large as any picnic shelter in any of the Leavenworth parks, should be completed and ready for use for the 2010 season. Angle parking is also being added along 14th Street adjacent to the playground equipment at Wollman Park to improve pull-in parking in this area.

Adopt-A-Park Program

If your group is looking for a way to make a difference in our community, why not consider adopting a Leavenworth city park or other landscaped public area?

What Does Adopting a Park Require? Participants can choose from a variety of tasks, to include establishing a presence in the parks and reporting vandalism and maintenance problems, picking up litter, painting, weeding or gardening. Donations can also be made for park improvements. City staff will provide guidance and some materials for projects.

How Do I Adopt a Park? Contact Julie Anderson, Parks & Recreation Director, at (913) 758-6713, or janderson@firstcity.org. Choose a park and decide what activities you will be able to do and how often. Once this is established, a sign will be erected in the park with your group's name and logo.

Which Parks are Available for Adoption? Bob Dougherty Park, David Brewer Park, Hollie Park, Jefferson Park, Kane Park, North Esplanade Park, Pilot Knob Park, Ray Miller Park, Riverfront Park, South Esplanade Park, Southside Park, Stubby Park, Union Park, and V.A. Park. For more information, please call (913) 651-2203.

FACEBOOK

Leavenworth Parks & Recreation Department is now on Facebook. To keep up-to-date on programs and event information, visit us on Facebook and "become a fan."

First City "TRY" athlon for Kids/OK Kids Day

A TRYathlon is a FUN triathlon for kids to TRY their skills at three sports, swimming, cycling, and running, regardless of their size, shape, or ability. Every kid who finishes the race is awarded a medal, t-shirt, and certificate. Register at the Riverfront Community Center by April 2. Information packets will be available at the Riverfront Community Center. For more information, call Pam Simpson at (913) 758-6629. Late registrations may not receive a t-shirt. Open to kids ages 7-13. Date: Saturday April 17. Beginning at 8:00 a.m.

Cost: \$15 per child before April 2 Or \$20 between April 3-9 (not accepted after 4/9)

SPRING BREAK SWIM!

Come swim at the Riverfront Community Center. Tuesday and Thursday March 16 & 18 from 1:00-3:00 pm. Regular admission prices. Non swimmers and children under 10 must be supervised by an adult. Come on out and get wet!

Upcoming Events & Programs



Easter Egg Hunt and Spring Fling

Join Leavenworth Parks & Recreation Department at their annual Easter Egg Hunt & Spring Fling. This year's event will have bounce houses, vendors, and other activities and will be held at 10th Avenue Park.

Saturday, March 27, 2010
10:00 a.m. - 2:00 p.m.
Egg Hunt at 1:00 p.m.

Touch-a-Truck

Bring your kids down to Leavenworth Landing Park to see the many kinds of trucks working in and around our community. Wednesday, May 5, 2010
10:00-11:30 a.m.
Admission is FREE!



Retirement Planning for Today

We are offering an informative course which blends financial education with life planning to help you build wealth, align your money with your values, and achieve your retirement goals. March 11th & 18th
6:30 - 9:30 p.m.
Call 651-4321 for details.

October is National Fire Safety Awareness Month



Cooking Safety Tips

- Never leave cooking unattended.
- If you are simmering, baking, roasting, or boiling food, check it regularly and use a timer to remind you that you are cooking.
- Always wear short or tight-fitting sleeves when you cook.
- Keep towels, pot holders and curtains away from flames.

Preventing Home Heating Fires

- Keep or maintain a three-foot clearance between all heating equipment and anything that can burn.
- Inspect and maintain heating equipment regularly for safety.
- Be sure to have fixed space heaters installed by a qualified technician.
- When buying a new, portable space heater, make sure it has the label showing it is listed by a recognized testing laboratory, such as Underwriters Laboratories (UL).
- Space heaters should be turned off every time you leave the room and before going to bed.
- Choose space heaters that turn off automatically if they tip over.
- Do not use your oven to heat your home.
- Have your chimney inspected annually and cleaned if necessary, especially if it has not been used for some time.
- Use a metal or glass fireplace screen to keep sparks from hitting nearby carpets or furniture.
- Don't use excessive amounts of paper to build fires in fireplaces. It is possible to ignite creosote in the chimney by overbuilding the fire.
- Keep flammable materials away from your fireplace mantel. A spark from the fireplace could easily ignite these materials.
- Before you go to sleep, be sure your fireplace fire is out. NEVER close your damper with hot ashes in the fireplace. A closed damper will help the fire to heat up again and will force toxic carbon monoxide into the house.
- If synthetic logs are used, follow the directions on the package.
- Do not use flammable liquids to start or accelerate any fire.
- Never burn charcoal indoors. Burning charcoal can give off lethal amounts of carbon monoxide.
- Allow fireplace and wood stove ashes to cool before disposing in a metal container.

Smoke Alarms and Carbon Monoxide Detectors

- Install smoke alarms in every bedroom, outside each sleeping area, and on every level of the home. For the best protection, interconnect all smoke alarms throughout the home. When one sounds, they all sound.
- Test smoke alarms monthly and change batteries at least once a year.
- Install and maintain carbon monoxide alarms with an audible warning signal near the sleeping areas.

Cooking equipment fires are the leading cause of residential fires and associated civilian injuries. Thanksgiving is the peak day for home cooking fires.

Heating is the second leading cause of residential fires and the second leading cause of fire deaths. Heating fires are a larger problem in single family homes than in apartments.

Each year, in America, carbon monoxide poisoning claims more than 400 lives and sends another 20,000 people to the hospital. The City of Leavenworth responded to 70 carbon monoxide calls in 2009, the majority of which came during the colder months.

The City Revises its Leaf Pickup Procedures for the Fall

For the first time in its three-year history, the City's Leaf Pick-Up Program will start in the southern part of the City, at Eisenhower Road, and move northward, stopping at Spruce Street. The switch in direction was made to ensure equal service delivery since, in 2009, crews started in the north and were unable to make their way to the southern part of the City until early 2010.

Furthermore, the past couple years have demonstrated that crews rarely make it further than Spruce before the winter weather takes its toll. Last year was an especially hard year regarding weather, and the City understands the frustration of those who raked their leaves to the curb in the fall and had them sit there for months. In 2010, if there is the same heavy rain or snow, it's only fair that those living in the southern part of the community are allowed the same service that those in the north received in 2009.

Crews are scheduled to start the leaf pick-up in early November. More information on the pick-up schedule will be available at www.lvks.org in October.

OTHER LEAF DISPOSAL OPTIONS:

Drop them off at the City's Brush Site - Located at 1803 S. Second St., the Brush Site is open Tuesday through Saturday from 8 a.m. – 3:50 p.m. and accepts grass clippings and leaves at no charge.

Feed your lawn with leaves by using a mulching mower - Instead of raking leaves, run a mulching mower across up to six inches of fallen leaves instead of raking. Leaf mulch makes the ideal fall lawn treatment.

Create your own compost - Easy home composting recipes and instructions are provided at How2Compost.com.

Contract with private firms providing this service - Find local lawn maintenance professionals in the yellow pages.

Free pickup with regular refuse collection - Bag your leaves with your trash and there is no extra charge for disposal.

Apply for a burn permit - Permits shall be issued for the burning of brush and tree debris only. Requests for burn permits are issued by the fire chief or his designee. Call Fire Headquarters at 913-758-2980 for more information.



Parks

Park Information and Amenities - For a complete listing of City parks and facilities, visit www.lvks.org, or call 913 651-2203 for more information.

Reservation Permits - All park and alcohol permits are issued at the Leavenworth Parks and Recreation Office, 123 S. Esplanade St.

Picnic Shelters - Rent a large shelter for \$25 a day or a small shelter for \$10 a day. Reservations for large shelters include seven picnic tables (each seats six-eight). Extra tables are \$5 each. Large shelters are located at David Brewer Park, Wollman Park, Hawthorn Park, North Esplanade Park, Riverfront Park, and inside the Wollman Aquatic Center. Small shelters (no restroom facilities) are located at Stubby Park, Ray Miller Park, and VA Park and include one picnic table.

Leavenworth Landing Park - This scenic park on the Missouri River (Esplanade and Cherokee streets) is available to rent for special occasions. Permit fees are \$15 per hour, with a \$100 refundable damage deposit. Choose either the Paddlewheel Plaza or the Railroad Roundhouse. The Bridge Tender's Building rents for \$20.

Alcoholic Beverage Permit - By City ordinance, alcoholic beverages are prohibited in City parks, except as authorized by Parks and Recreation to Leavenworth area residents with a park reservation permit. Alcoholic beverage permits are issued with Leavenworth Landing Park permits only, while 3.2% beer permits are issued in conjunction with other City park shelter permits. There is a \$10 alcoholic beverage or beer permit fee.

Game Kits - Rent a kit at the Parks and Recreation Office for \$5 (with a \$20 refundable deposit) for up to three days. Kits include a volleyball and net, a softball and bat, a football and a soccer ball.



Legacy Tree Program

Commemorate a special person or event with a living legacy.

For a \$200 fee, a tree will be planted and a plaque erected at the planting site.

Request forms are available at the Riverfront Community Center.

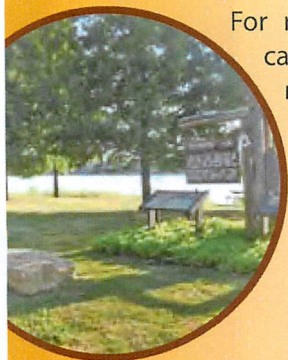
Riverfront Park Campground

This park under the Missouri River bridge has a restroom/shower house, boat ramp, picnic shelter and dump station.

Open April 1 – Oct. 31.

Fees: Basic pad \$8 per night; Electric pad \$10 per night; Non-camper dump fee \$1.

For reservations, call the park manager at 913-682-6398.



Park	Amenities	Restrooms	Picnic Shelter	Playground	Ball Fields	Tennis Courts	Hiking/Walking	Bike Path	Volleyball Court	Soccer Fields	Basketball Courts	Horseshoe Courts	Bath House	Boat Ramps	Camping/RVs	Sledding Hill	Pools	Skate Park	Dog Park
10th Avenue Park 10th Ave. & Gatewood	[Restroom] [Picnic Shelter] [Soccer Ball]	[Restroom]	[Picnic Shelter]																
Bob Dougherty Park Second & Kiowa	[Restroom] [Picnic Shelter] [Baseball Bat] [Baseball] [Softball] [Basketball]	[Restroom]	[Picnic Shelter]	[Playground]															
Cody Park Shrine Park & Limit	[Restroom] [Picnic Shelter] [Baseball Bat] [Baseball] [Softball] [Basketball]	[Restroom]	[Picnic Shelter]	[Playground]	[Baseball Field]														
David Brewer Park 18th & Ottawa	[Restroom] [Picnic Shelter] [Baseball Bat] [Baseball] [Softball] [Basketball]	[Restroom]	[Picnic Shelter]	[Playground]															
Havens Park 22nd & Ottawa	[Baseball Bat] [Baseball]																		
Hawthorn Park Kansas & Ohio	[Picnic Shelter] [Baseball Bat] [Baseball] [Softball]																		
Jefferson Park 11th & Kickapoo	[Baseball Bat] [Baseball]																		
Leavenworth Landing Park Esplanade & Cherokee	[Baseball Bat] [Baseball]																		
Ray Miller Park V.A. Entrance & Fourth	[Picnic Shelter]																		
Riverfront Park East End of Dakota	[Restroom] [Picnic Shelter] [Baseball Bat] [Baseball] [Softball] [Basketball]	[Restroom]	[Picnic Shelter]	[Playground]									[Bath House]	[Boat Ramp]	[Camping/RV]				
Southside Park First & Vilas	[Baseball Bat] [Baseball]																		
Sportsfield Park 20th & Ottawa	[Restroom] [Picnic Shelter] [Baseball Bat] [Baseball]	[Restroom]	[Picnic Shelter]	[Playground]															
Stubby Park Fourth & Poplar	[Picnic Shelter] [Baseball Bat] [Baseball]																		
V.A. Park Limit & Home Place	[Picnic Shelter] [Baseball Bat] [Baseball]																		
Wollman Park 13th & Shawnee	[Restroom] [Picnic Shelter] [Baseball Bat] [Baseball]	[Restroom]	[Picnic Shelter]	[Playground]															

City of Leavenworth Adopt-a-Park Program



The City of Leavenworth offers a variety of parks and green spaces for “adoption” by civic organizations, scouting organizations, church groups, families or individual citizens.

If you adopt-a-park, please check the park at least once a month and clean up trash or debris that your group or organization can handle. Please make sure trash is placed in barrels or hauled off by your group. If there is something that cannot be handled by your group, please call our Parks Department at (913) 682-0650 to alert them to the situation.

The Parks and Recreation Department may, at certain times of the year, ask that you assist with general beautification efforts in the park. This may include planting of flowers or mulching flower beds, painting park structures or equipment, and other miscellaneous items. The Parks Department would call and ask if your group would be willing to perform these duties ahead of time. If your group consents, the City will be responsible for paying for supplies; we just ask your group to provide the labor.

Adopting a City park is an excellent group activity that helps citizens connect to their community and provide a sense of commitment to the community. As a thank you to your organization, the City will post a sign or plaque in the park recognizing your group as volunteers.

If your group would decide to stop participating in the program, we simply ask that you call our Parks and Recreation Department and let them know you can no longer participate.

For additional questions, please contact Julie Anderson at (913) 651-2203.



Proclamation

- Whereas,* in 1872, J. Sterling Morton proposed to the Nebraska Board of Agriculture that a special day be set aside for the planting of trees; and
- Whereas,* this holiday, called Arbor Day, was first observed with the planting of more than a million trees in Nebraska; and
- Whereas,* Arbor Day is now observed throughout the nation and the world; and
- Whereas,* trees can reduce the erosion of our precious topsoil by wind and water, cut heating and cooling costs, moderate the temperature, clean the air, produce life-giving oxygen, and provide habitat for wildlife; and
- Whereas,* trees are a renewable resource giving us paper, wood for our homes, fuel for our fires and countless other wood products; and
- Whereas,* trees in the City of Leavenworth, Kansas increase property values, enhance the economic vitality of business areas, and beautify our community; and
- Whereas,* trees, wherever they are planted, are a source of joy and spiritual renewal.

Now, Therefore, I, Shay Baker, Mayor of the City of Leavenworth, Kansas do hereby proclaim April 24, 2009 as

"Arbor Day"

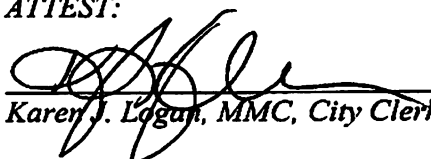
in the City of Leavenworth, and I urge all citizens to celebrate Arbor Day and to support efforts to protect our trees and woodlands, to plant trees to gladden the heart and promote the well-being of this and future generations.

Presented this twenty-first day of April in the year two thousand and nine.




Shay Baker, Mayor

ATTEST:


Karen J. Logan, MMC, City Clerk



Proclamation

- Whereas,* the Leavenworth City Commission is committed to working toward making the City of Leavenworth the most attractive, livable, healthy and vibrant community possible; and
- Whereas,* your elected leaders realize it takes the good will and hard work of all citizens to achieve such lofty visions; and are therefore encouraging all Leavenworth citizens to assume responsibility in maintaining a clean and attractive neighborhood environment; and
- Whereas,* the City is making a concerted effort to facilitate participation from businesses, neighborhood associations, schools, churches, social/service organizations, and City staff in realizing improvement in the physical appearance of our City; and
- Whereas,* such collaborative efforts can serve to foster a sense of community, invigorate a sense of pride about that community, serve as an opportunity for organizational and leadership skill development and reinforce the virtue of personal responsibility while resulting in a more attractive community with a higher quality of life; and
- Whereas,* the "Spring Clean-Up" kick-off will be held on Saturday, April 18, 2009 at 8:30 a.m. with a ceremony at Warren Middle School.

Now, Therefore, I, Lisa Weakley, Mayor of the City of Leavenworth, do hereby proclaim
April 18, 2009 as

"Spring Clean-Up Day"

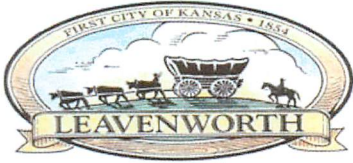
and urge all of our citizens to work toward protecting our environment and to join in efforts to preserve the attractiveness of our community.

In witness whereof, I, Lisa Weakley, Mayor, have set my hand and caused the official Seal of the City of Leavenworth to be affixed this fourteenth day of April in the year of two thousand and nine.



Lisa Weakley
Lisa Weakley, Mayor

ATTEST:
Karen J. Logan
Karen J. Logan, MMC, City Clerk



KNOW THE CODE

The City of Leavenworth wants to help citizens 'know the code' when it comes to the City's Code of Ordinances regarding the most common code violations. This week's "Know the Code" focuses on trash and how to dispose of your trash properly. To read the actual Code of Ordinances, visit our website at www.lvks.org.

Weekly Garbage & Trash Pick-Up

Garbage and household trash cannot be left in the yard and must be disposed of properly. This includes auto parts, appliances, furniture, building materials, tires, cardboard, plastics, or any other materials. Tree trimming and fallen limbs must be disposed of within a week. Trash cannot be set out prior to 24 hours in advance of your regular trash day. It is unlawful to burn garbage within the city.

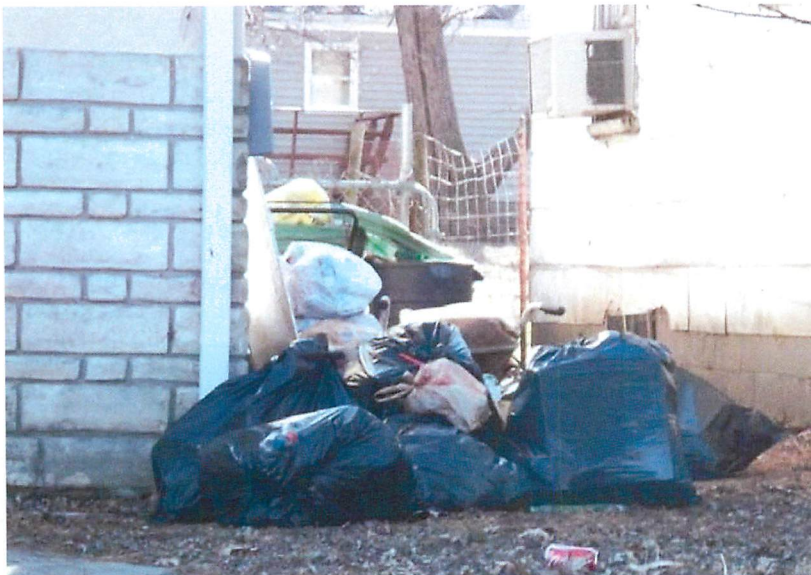
Bulk Items & Special Pick Ups

The City of Leavenworth will pick up most furniture items, TV's, mattresses and box springs with the regular trash. Large, metal items such as appliances, metal desks and miscellaneous heavy metal items will be picked up on Fridays. To schedule pick-up, please call the Service Center at 682-0650 no later than 3:00 p.m. on Thursday for pick up on Friday.

FREE Saturdays

On the first Saturday of each month, the City of Leavenworth offers "FREE Saturdays." This event is an excellent opportunity for residents to utilize the City's services for no charge. In 2009, the City of Leavenworth will expand this free service for the months of May-September to include free services on the third Saturday of each month, too. On FREE Saturdays, the Brush Site is open from 8:00 a.m. to 4:00 p.m.; and, dumpsters are provided for residents at the north entrance of the Municipal Service Center (790 Thornton) for residents to drop off materials such as large appliances, furniture, trash, and tires between the hours of 8:30 a.m. to 12:30 p.m.; and the Recycling Center is open normal hours from 8:30 a.m. to 12:30 p.m., for drop-off of recyclable items.

This is an example of a residence in violation of the City of Leavenworth's Code regarding trash and garbage being left at the residence.



Mike McDonald

From: Tim Green [tgreen@ci.lenexa.ks.us]
Sent: Friday, April 01, 2011 2:27 PM
To: Mike McDonald
Cc: Mike Hooper; Bob Patzwald
Subject: RE: Stormwater Regulations

Please feel free to use these documents. If you would like to have Word documents, I can provide you what I have.

-----Original Message-----

From: Mike McDonald [<mailto:MMcDonald@firstcity.org>]
Sent: Friday, April 01, 2011 1:33 PM
To: Tim Green
Cc: Mike Hooper; Bob Patzwald
Subject: [SPAM] - Stormwater Regulations

Tim -

The City of Leavenworth has been working to bring our stormwater and development regs into the last half of the 20th Century for about six months. We have reviewed and studied several local governments regulations, and like what Lenexa has done.

We would like to use a combination of the MARC BMP, APWA 5600 and your technical specs as a model for ours. This may entail wholesale copying and pasting of language and tables and sections. Of course they would be configured for Leavenworth, but most folks who pay attention would know where they were from originally

This is a request for "permission" to do this with some of your regulations

If you need a more formal letter or additional information - please let me know

Mike

Michael G. McDonald, PE
Director of Public Works
City of Leavenworth

Mike McDonald

From: Miller, Daniel [Daniel.Miller@opkansas.org]
Sent: Monday, April 11, 2011 11:49 AM
To: Mike McDonald
Cc: Brown, Doug
Subject: RE: Stormwater Regs

Hi Mike,

Our regulations are public domain and you may view and utilize them as you wish. Of course the City of Overland Park cannot accept responsibility for any use or modifications by other agencies.

Thanks,

Dan

DANIEL MILLER P.E.
CITY ENGINEER
PUBLIC WORKS

CITY OF OVERLAND PARK
10000 LYNDALE BLVD
OVERLAND PARK, KS 66211
913-895-6032 (w) | 913-233-9280 (m) | 913-890-1032
(f)
daniel.miller@opkansas.org | www.opkansas.org

OVERLAND PARK
KANSAS
ABOVE AND BEYOND. BY DESIGN

From: Mike McDonald [mailto:MMcDonald@firstcity.org]
Sent: Monday, April 11, 2011 11:24 AM
To: Miller, Daniel
Subject: FW: Stormwater Regs

Dan – here is the email I sent earlier

Please let me know if you have any questions about it

Mike

Michael G. McDonald, PE
Director of Public Works
City of Leavenworth
100 N Fifth Street
Leavenworth, KS 66048
mmcdonald@firstcity.org
913-684-0375

From: Mike McDonald
Sent: Friday, April 01, 2011 9:41 AM
To: 'doug.brown@opkansas.org'
Cc: Bob Patzwald; Mike Hooper
Subject: Stormwater Regs

Doug –

The City of Leavenworth has been working to bring our stormwater and development regs into the last half of the 20th Century for about six months. We have reviewed and studied several local governments regulations, and like what OP has done.

We would like to use a combination of the MARC BMP, APWA 5600 and your regs as a model for ours. This may entail wholesale copying and pasting of language and tables and sections. Of course they would be configured for Leavenworth, but most folks who pay attention would know where they were from originally

This is a request for “permission” to do this with some of your regulations

If you need a more formal letter or additional information – please let me know

Mike

Michael G. McDonald, PE

Director of Public Works

City of Leavenworth

100 N Fifth Street

Leavenworth, KS 66048

mmcdonald@firstcity.org

913-684-0375

This e-mail message has been scanned for Viruses and Content and cleared by NetIQ MailMarshal
