



Sent via e-mail

July 19, 2018

Wayne Dillard, P.E.
U.S. Environmental Protection Agency
- Region 7
Water, Wetlands and Pesticides Division
11201 Renner Boulevard
Lenexa, KS 66219
Dillard.Wayne@epa.gov

RE: SSO Order of Compliance – Docket No. CWA-07-2015-0022
Compliance Actions – City of Leavenworth
Timeframe: January 1, 2018 to June 30, 2018

Mr. Dillard:

Pursuant to Paragraphs 37 and 38 of the Order of Compliance on Consent, Docket No. CWA-07-2015-0022, the City of Leavenworth, Kansas is providing the following:

Paragraph 37. Attached is a listing of SSO "Transparency Report" notifications on the City of Leavenworth webpage at www.lvks.org. These are related to SSO events that reached the Waters of the United States. Additional notifications of these events were made by the City Public Information Officer (PIO) via Social Media and elsewhere on the City's webpage at www.lvks.org.

There were four (4) SSO events that reached the Waters of the United States between January 1, 2018 and June 30, 2018.

1. *January 8, 2018. At approximately 8:43 pm Water Pollution Control (WPC) personnel were notified of a sewer smell near 720 Kickapoo. Upon arrival at the site, a manhole was overflowing onto the ground at an estimated rate of 25 gallons per minute. An unknown amount of sewage was released onto the ground. WPC crews removed the line blockage, cleaned up the site, and placed signs at the downstream creek. The signs have been removed.*
2. *May 4, 2018. Water Pollution Control (WPC) received a call from a citizen at 1309 Pottawatomie where a local plumber had cleaned out a private sewer lateral at 1315 Pottawatomie and let the sewage run into the street and the downstream storm drain on 13th Street. WPC crews cleaned up the debris, flushed the storm drain, and placed signs at the creek. The signs have been removed. An unknown amount of sewer water was released onto the ground and into the creek.*

3. *June 3, 2018. At approximately 11:57 pm Water Pollution Control (WPC) personnel were contacted by the resident at 727 Shawnee St. stating that their sewer was backing up into their basement. At 12:20 am, WPC crews arrived and found the resident pumping water from the basement into an alley storm drain. The process was stopped and the resident was informed that sewer water would contaminate the storm drainage system. The City main was cleaned and the line returned to normal flow. An unknown amount of sewage was pumped into the storm drain. E Coli samples were taken and signs were placed at the downstream creek. The signs have been removed.*
4. *June 15, 2018. A citizen reported a sewer smell near the creek between 12th Street and 13th Street on Dakota Street. Upon arrival, Water Pollution Control (WPC) personnel found the USP Leavenworth (Bureau of Prisons) lift station had lost power and was overflowing into the creek. (City of Leavenworth has no jurisdiction over Bureau of Prisons even though it is within the City of Leavenworth) USP officials were notified and their personnel cleaned the area. E Coli samples were taken and crews placed signs at the downstream creek. The signs have been removed. An unknown amount of sewage was released into the creek.*

A copy of the transparency reports related to these four (4) events is attached.

Paragraph 38. Describe actions taken by the City between January 1, 2018 and June 30, 2018 to comply with this order, and attach copies of all SSO reports submitted to KDHE.

(a.) The number of unauthorized discharges which occur within the City's POTW (Publicly-Owned Treatment Works) during the reporting period:

20 SSO events occurred during this period and were reported to KDHE. A report showing each event and resolution of the event is included with this letter.

- **10 Private-Line Events.** Two (2) reached the Waters of the United States.
 - o 1 event was from contractor actions
 - o 9 events were not related to contractor actions
- **2 City-Line Events.** One (1) reached the Waters of the United States.
 - o No event was from contractor actions
- **6 Fort Leavenworth** events were reported by American Water to KDHE. Copies of those reports are included. It is unknown if any of these events reached the Waters of the United States (The City of Leavenworth has no jurisdiction on Fort Leavenworth even though it is inside the City limits.) The City is continually working on communication between Ft. Leavenworth (American Waterworks) regarding the reporting of SSOs to WPC.

- **2 USP Leavenworth** (Bureau of Prisons) SSO events were reported to KDHE. A copy of those reports is included. One (1) event reached the Waters of the United States. The volume of the SSO was reported to be 2000 gallons. (The City of Leavenworth has no jurisdiction on USP Leavenworth even though it is inside the City limits.)

(b.) The specific measures taken by the City to correct and prevent recurrence of each unauthorized discharge which occurred within the City's POTW during the reporting period:

The City and residents have taken the actions as noted in the summary report related to Paragraph 38, section (a) above. In addition to those efforts, the following work occurred in the reporting period:

1. City continues to operate a CCTV crew. 3.6 miles were inspected during the reporting period for a total of 3.6 miles to date in 2018.
2. City continues to operate a cleaning and root elimination crew. 23.0 miles were cleaned during the reporting period for a total of 23.0 miles to date for 2018.
3. City issued a contract for root control operations in March 2018. The 2018 project treated 13,502 feet of sanitary sewer lines. In August 2017, crews inspected the lines treated in the April 2017 root control project. No areas were identified for warranty work under the 2018 project.
4. City continues to operate a grease trap inspection program. Letters are sent to selected relevant businesses monthly and all known owners are contacted at least one time each year. The letters inform businesses of the program and the City requests copies of maintenance records. Fifty-four (54) businesses were contacted in the reporting period. Physical inspections have been completed at twenty-two (22) grease trap installations during the reporting period. Two (2) new installations were completed during the reporting period. Currently one (1) business has not yet complied with the City's request letters regarding the need for inspection. Eleven (11) businesses have submitted maintenance records.
5. Design work for the 2018 Inflow/Infiltration construction project is complete. The bid opening, project award, and construction will be during the 2nd half reporting period. Two contracts for sewer line point repairs totaling \$13,360 were awarded and completed. WPC crews identified seven (7) private lateral issues with four (4) repaired this reporting period through the property owners and three (3) pending repair. The preliminary report for the sewer rate study has been completed by Black & Veatch with the final report expected to be completed in late 2018.
6. City efforts related to retention of employees have resulted in the following during the reporting period:

- a. Four (4) employees separated from WPC. Three (3) new employees were hired. There was one vacancy at the end of the reporting period which is currently being advertised for applicants.
- b. Training and education opportunities are available for all operators; to include in-house and formal training, and three California correspondence courses. All KDHE-certified operators are current in their requirements. The following training was attended by Water Pollution Control employees.

In-house

- Trickling Filter Training, Review and Test – Eleven (11) employees
- Pump Training, Review and Test – Eleven (11) employees

Outside Agency

- Hazwoper – Two (2) employees
- PACP, MACP, LACP – Two (2) employees
- Confined Space – Two (2) employees
- UV - Eleven (11) employees
- Work Zone Safety – Four (4) employees
- Harassment – Two (2) employees
- Electrical Motors and Variable Speed Drives – Two (2) employees
- California Correspondence Course, Volume II – One (1) employee
- California Correspondence Course, Volume I – One (1) employee

7. Two cycles of creek-crossing inspections have occurred in the reporting period with zero (0) issues noted.
8. The "Trouble Line" list continues to be investigated by City staff. These lines are subjected to additional routine cleaning or inspection on approximately a monthly basis due to previous situations. Two (2) lines were removed from the "Trouble Line" List with the work done under the 2017 I & I Sewer Project. There are currently 20 lines on the "Trouble List", and One (1) line under evaluation to be added.
9. City has contracted with Service Line Warranties of America to provide an affordable repair option for all residential sewer lines (private lines). This optional program began in January 2017. Records indicate that no new customers registered for the sewer line warranty program during the reporting period of January 1, 2018 to June 30, 2018. Nine external sewer warranty repairs occurred within the reporting period.
10. City Community Development Block Grant (CDBG) funds may be used to fund homeowner private sewer line repair or water line repair up to a maximum cap of \$5,000 depending on income qualifications. There were no CDBG sewer line repairs during this reporting period.

11. City Housing Trust Fund (HTF) resources may be used to assist homeowner private sewer line repair or water line repair up to a maximum cap of \$5,000 depending on income qualifications. There were no HTF sewer line repairs during this reporting period.
12. City of Leavenworth and City of Lansing have signed a Memorandum of Understanding related to use of City of Lansing facilities for disposing of solids from the Vactor truck.
13. The City of Leavenworth approved the purchase of a new Vac-Con Vacuum truck for use in sewer line cleaning, SSO clean-up, stormwater system cleaning, and utility locate operations. The truck was delivered in late June 2018.
14. The City continues to evaluate SSOs related to contractor actions. No patterns of behavior or actions were determined to be responsible for SSOs this reporting period. The need for situational awareness continues to be stressed to City inspectors and the contractors involved with the SSOs.

(c.) A copy of each unauthorized discharge report submitted to KDHE: Copies of 20 KDHE SSO reports are attached to this letter. This includes six (6) events on Fort Leavenworth and two (2) events originating on USP.

If you have any questions or need additional documentation, please don't hesitate to contact me at 913-684-0375 or by email at mmcdonald@firstcity.org.

Sincerely,

Michael G. McDonald, P.E.,
Director of Public Works

cc: Paul Kramer, City Manager
Jaime Gaggero, Director, Bureau of Water, KDHE (sent via U.S. mail)
Brittany A. Barrientos, Attorney

Attachments

- Screenshots of on-line Transparency Report with details of the four events
- Spreadsheet with summary of 20 SSO events with dates and corrective actions
- KDHE SSO reports (20 events)
- Listing of 20 "Trouble Lines" currently receiving enhanced maintenance
- Summary sheet from Service Line Warranties of America program
- YTD Grease Trap/Receptor Survey

Contact Us

Chuck Staples,
Supervisor, Water Pollution
Control

**Wastewater Treatment
Plant** (more)
1800 S 2nd St
Leavenworth, KS 66048
Get Directions



Assistant:
(913) 682-1090



Department Staff

Related Topics



Department Home

Topics

Grow Leavenworth
County Development
Corporation (an E-
Community)

Application for
Subdivision
Development

Economic
Development Grants

Weather and Rainfall
Information for
Leavenworth

Sister City Program

Brush Site

Sanitary Sewer
Overflow
Transparency Report

Boards / Commissions

Airport Advisory Board

Building Code Board
of Appeals

Community

You are here: Home > Departments > Sanitary Sewer Overflow Transparency Report

About This
Topic

Documents
& Reports

More
Information

News &
Notices

Sanitary Sewer Overflow Transparency Report

City crews work to keep the main sewer lines clean and maintained. There is occasionally a break in a sewer line that can lead to discharge of untreated sewage, possibly reaching the stormwater drainage system. We urge Leavenworth residents to contact us immediately if they see signs of a sewer discharge at 913-682-1090. Crews respond to system user requests for service 24 hours a day 7 days a week.

The City of Leavenworth can only verify the City main lines. A lateral line is the line that runs from a residence or business to the City sewer mains. We cannot verify blockages in lateral lines. This must be done by a licensed plumbing company.

Information on Sanitary Sewer Overflows is made available to the general public as part of the City's transparency efforts.

2016

- Sanitary Sewer Overflow reported Feb. 22, 2016 between Seventh and Broadway and Ottawa and Kickapoo
- Sanitary Sewer Overflow reported March 23, 2016 at Iowa and Oregon streets
- Sanitary Sewer Overflow reported April 10, 2016 south of Metropolitan Avenue
- Sanitary Sewer Overflow reported April 12, 2016 at 11th and Cherokee
- Sanitary Sewer Overflow reported April 26, 2016 at 555 Ohio
- Sanitary Sewer Overflow reported May 11, 2016 at Second and Elm
- Sanitary Sewer Overflows as a result of May 26, 2016 rainstorm
- Sanitary Sewer Overflow reported June 5 at Buffalo Bill Cody Park
- Sanitary Sewer Overflow reported July 2, 2016, at manholes throughout the City.
- Sanitary Sewer Overflows on July 5, 2016
- Sanitary Sewer Overflows on Sept. 14, 2016

2017

- Sanitary Sewer Overflow reported Feb. 18, 2017 near Fourth and Spruce streets
- Sanitary Sewer Overflow reported Feb. 22, 2017
- Sanitary Sewer Overflow reported April 3, 2017
- Sanitary Sewer Overflow reported April 21, 2017
- Sanitary Sewer Overflow reported April 22, 2017
- Sanitary Sewer leak reported May 16, 2017
- Sanitary Sewer Overflow reported May 30, 2017
- Sanitary Sewer Overflow reported June 9, 2017
- Sanitary Sewer Overflow for June 19, 2017
- Sanitary Sewer Overflow for December 28, 2017

2018

- Sanitary Sewer Overflow reported Jan. 8 2018
- Sanitary Sewer Overflow reported 13th and Pottawatomie May 3, 2018
- Sanitary Sewer Overflow reported June 3, 2018 at 727 Shawnee Street
- Sanitary Sewer Overflow reported June 15, 2018 at USP lift station



Contact Us

100 N. 8th St.
Leavenworth, KS 66046
Get Directions

Phone:
(913) 852-6201

Email Us

Staff Directory

Sanitary Sewer Overflow reported Jan. 8, 2018

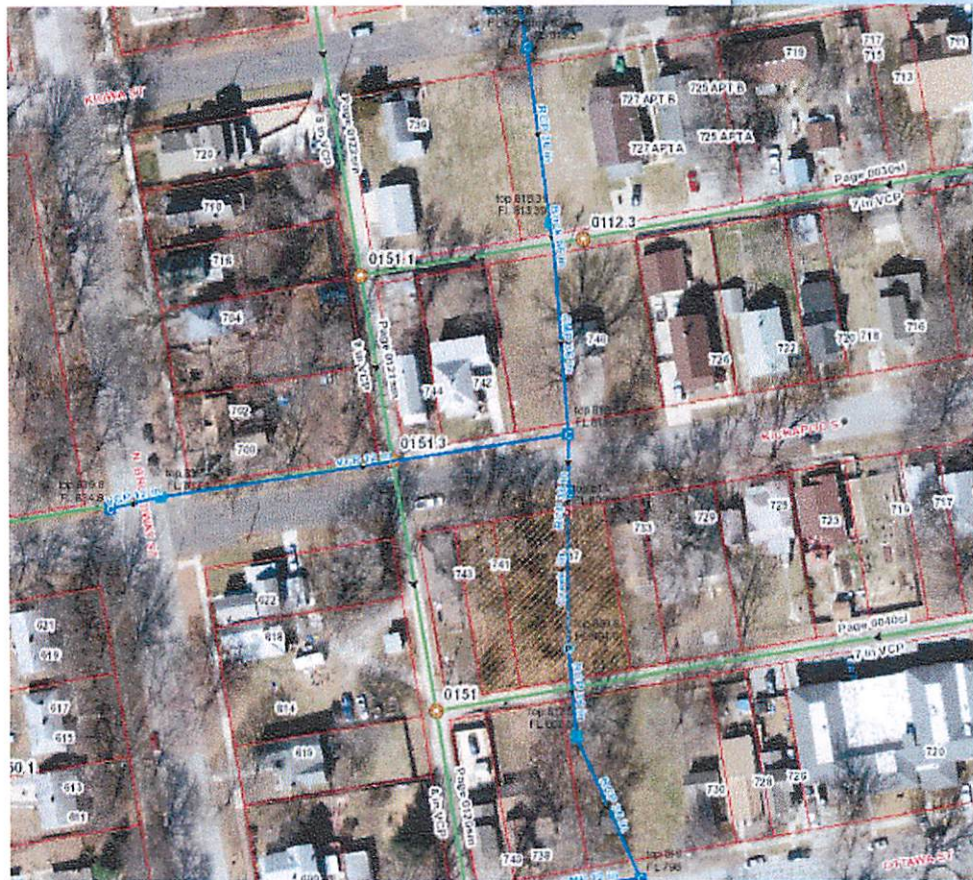
At 3:43 p.m. Jan. 8, a citizen contacted the City about a sewer smell near 720 Kickapoo St. Upon arrival, Water Pollution Control staff found a manhole overflowing at an estimated rate of 28 gallons per minute. Staff cleaned the sewer line and stopped the manhole from overflowing. Normal sewer line flow returned.

WPC staff has placed "contaminated creek" signs in affected areas, from the 700 block between Kickapoo and Ottawa streets and between Geneva and Broadway streets. The PUBLIC should stay away from the creek in affected areas until the signs are removed. UPDATE: As of Jan. 16, signs have been removed.

WPC staff took water samples to test for E. coli both upstream and downstream where the manhole overflowed. They are investigating the reason for the overflow.

The Kansas Division of Health and Environment has been notified.

Citizens are encouraged to call our 24-hour sewer line at 800-1090 if they notice a strong sewer smell.



- [Businesses](#)
- [Visitors](#)
- [Media Room](#)
- [Services](#)

Contact Us

100 N. 5th St.
Leavenworth, KS 66048
[Get Directions](#)

- Phone: (913) 682-9201

Sanitary Sewer Overflow reported Jan. 8, 2018

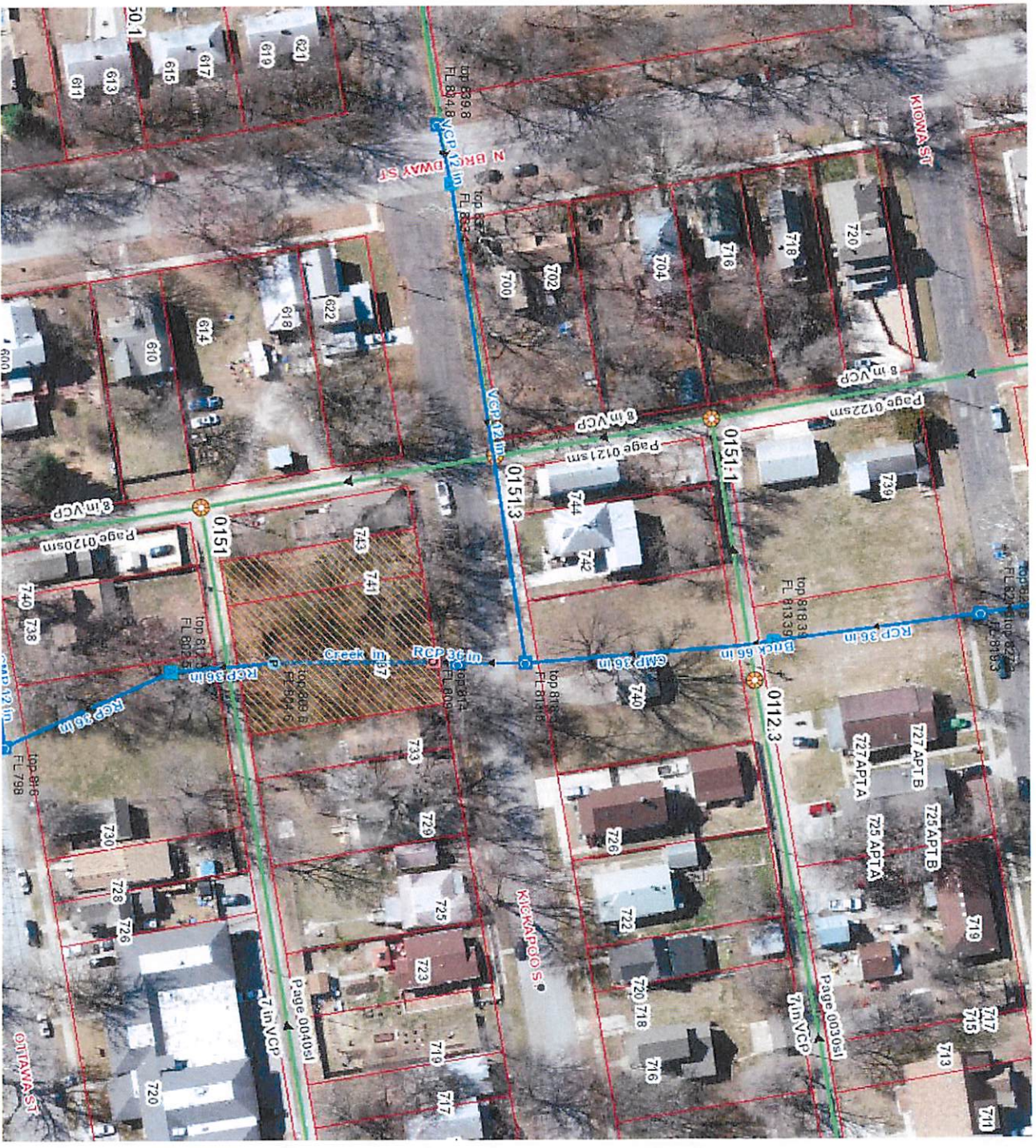
At 8:43 p.m. Jan. 8, a citizen contacted the City about a sewer smell near 720 Kickapoo St. Upon arrival, Water Pollution Control staff found a manhole overflowing at an estimated rate of 25 gallons per minute. Staff cleaned the sewer line and stopped the manhole from overflowing. Normal sewer line flow returned.

WPC staff has placed “contaminated creek” signs in affected areas, from the 700 block between Kickapoo and Ottawa streets and between Seventh and Broadway streets. The public should stay away from the creek in affected areas until the signs are removed. UPDATE: As of Jan. 16, signs have been removed.

WPC staff took water samples to test for E. coli both upstream and downstream where the manhole overflowed. They are investigating the reason for the overflow.

The Kansas Division of Health and Environment has been notified.

Citizens are encouraged to call our 24-hour sewer line at 682-1090 if they notice a strong sewer smell.



- [Home](#)
- [Departments](#)
- [Residents](#)
- [Businesses](#)
- [Visitors](#)
- [Media Room](#)
- [Services](#)
- [Accessibility Statement](#)
- [Privacy Policy](#)
- [Terms Of Use](#)
- [RSS](#)



Welcome to

Leavenworth

Kansas

Site Search



[Home](#)

[Departments](#)

[Residents](#)

[Businesses](#)

[Visitors](#)

[Media Room](#)

[Services](#)

Contact Us

100 N. 5th St.
Leavenworth, KS 66048
[Get Directions](#)



Phone:
(913) 682-9201



[Email Us](#)



[Staff Directory](#)

Transparency Report for 1309 Pottawatomie May 4, 2018

Water Pollution Control responded to a sewer call at 1309 Pottawatomie Stree where a local plumber had cleaned out the lateral at 1315 Pottawatomie Street and let the sewer run into the street and down the storm drain on 13th Street. WPC cleaned up the debris left by the plumber and flushed out the storm drain and placed contaminated creek sign at that location. We would advise the citizens to stay out of the creek from the bridge at 13th and Pottawatomie Street to the bridge just east of 340 Osage Street. WPC has taken e-coli samples and will remove these sign when the result of these test indicate the creek levels are at a safe level.



Welcome to

Leavenworth

Kansas

Site Search [Home](#)[Departments](#)[Residents](#)[Businesses](#)[Visitors](#)[Media Room](#)[Services](#)

Contact Us

100 N. 5th St.
Leavenworth, KS 66048
[Get Directions](#)



Phone:
(913) 682-9201



[Email Us](#)



[Staff Directory](#)

Sanitary Sewer Overflow reported June 3, 2018 at 727 Shawnee Street

Water Pollution Control received a call June 3, 2018 at 11:57 p.m. from an individual at 727 Shawnee Street stating that their sanitary sewer was backing up into their basement.

ACTION TAKEN: When WPC crews arrived at 12:20 p.m., they noticed that the individual was pumping water from the basement into a storm drain in the alley. WPC stopped this process and informed the individual that sewer water would contaminate the storm drain. WPC cleaned the sewer line and returned to normal flow. WPC placed a contaminated creek sign out and took E. Coli samples.

FURTHER ACTION TAKEN: WPC is testing the creek for E. Coli. Once the results of these tests are known and the E. Coli level are

RISK TO PUBLIC: The City asks that residents keep their children and pets away from this creek until the sign are removed. The affected areas are Three Mile Creek from Broadway Street to the east side of the bridge on Seventh Street.

WHAT RESIDENTS CAN DO TO HELP: Public Works would also remind residents to contact WPC any time day or night and weekends if they have a sewer leak. Please call 913-682-1090.



Welcome to

Leavenworth

Kansas

Site Search



- Home
- Departments
- Residents
- Businesses
- Visitors
- Media Room
- Services

Contact Us

100 N. 5th St.
Leavenworth, KS 66048
[Get Directions](#)

Phone:
(913) 662-0201

Email Us

Staff Directory

Sanitary Sewer Overflow reported June 15, 2018 at USP lift station

On June 15, 2018, a citizen reported a sewer smell near the creek between 12th and 13th street on Dakota street. Upon investigation, Water Pollution Control found that the sanitary sewer lift station on the north side of Metropolitan Street owned and operated by the United States Federal Penitentiary had lost power and overflowed.

The amount of overflow is unknown at this time. WPC has placed "contaminated creek" signs along the creek banks. USP-Leavenworth has contracted the cleanup and will take creek samples for E.coli to a lab. The City asks residents to stay away from the area between 12th and 13th streets from Metropolitan to Kiowa Street until the contaminated creek signs are removed.

When E.coli levels are below set acceptable levels, the creek signs will be removed.

WHAT RESIDENTS CAN DO TO HELP: If you notice a sewer smell or leaking onto the ground, call the City's 24-hour line, 913-662-1000.

City of Leavenworth

SSO Summary Timeframe - January 1, 2018 to June 30, 2018

	Date	Address	Nature of Problem	SSO	Problem	Transparency Report	Cause	Solution
1	8-Jan	720 Kickapoo	Sewer smell, found manhole overflowing into stormbox	Y	CLT	1/9/2018	Grease/ offset in main	Cleaned City main to clear grease. Line flowing normal
2	17-Jan	Hunt Lodge Fort LV	Holding tank overflow	Y	PLT	No	Toilet continously running	Called DPW to resolve the issue
3	23-Jan	1002 N. 12th St.	Back up in home	Y	PLT	No		Plumber called
4	2-Mar	1010 Ironmoulders	Sewage on street	Y	PLT	No	Private line blocked	Plumber opened
5	15-Mar	1140 Ironmoulders	Water running down street	Y	PLT	No	Private line blocked	Plumber opened
6	22-Mar	805/809 Columbia	Sewage from cleanout	Y	PLT	No	Line collapsed	Plumber repaired
7	29-Mar	760 Frank St.	Water backing up in basement	Y	PLT	No	Private line blocked	Plumber opened
8	5-Apr	300 N. 4th	Drains backed up to street	Y	PLT	No	Private line blocked	Plumber opened
9	11-Apr	Fort Leavenworth	Bypass	Y	PLT	No	Grease/ baby wipes	Line opened
10	22-Apr	601 Middle St.	Cleanout overflowing	Y	PLT	No	Private line blocked	Plumber opened
11	3-May	1309 Pottowatomie	Sewage on ground	Y	PLT	5/4/2018	Private line blocked	Plumber opened
12	8-May	Fort Leavenworth	Manhole overflow	Y	PLT	No	Grease baby wipes	Opened line
13	17-May	1400 Delaware St.	Line Broken	Y	PLT	No	Construction bored through	Construction fixed
14	29-May	Fort Leavenworth	Private line blockage	Y	PLT	No	Private line blocked	Drain cleaning machine/baby wipes. Serv pro cleaned up area.
15	2-Jun	USP	Lift station overflow (USP)	Y	PLT	No	Equipment failure	Equipment repaired
16	3-Jun	727 Shawnee	Sewage backing up in basement	Y	PLT	6/3/2018	CCTV to try and determine cause	City cleaning main line
17	7-Jun	201 Pine	Sewage out of cleanout	Y	CLT	No	City main collapsed	Repaired City main
18	8-Jun	Fort Leavenworth	Main plugged	Y	PLT	No	Stick and rags plugging	Clean line
19	9-Jun	Fort Leavenworth	Lift station overflow	Y	PLT	No	Pump at lift station failed	Pump was repaired
20	15-Jun	1300 Metropolitan	Lift station overflow (USP)	Y	PLT	6/15/2018	Power outage	Power restored

SSO	20
City Line Overflows	2
Private Line Overflows	18
Plant	0
Lift Station	0

Note:	PLT - Private Line Trouble
	CLT - City Line Trouble

	City Line Problems
	Fort Leavenworth
	Bureau of Prisons

**KANSAS DEPARTMENT OF HEALTH AND ENVIRONMENT
WASTEWATER INCIDENT REPORT FORM**

Definitions are available at <http://www.kdheks.gov/water/tech.html>

Collection System Bypass In-Plant Diversion Upset In-Plant Flow Through Spill

1. FACILITY NAME: City of Leavenworth Kansas Permit # M-M012-I001
 2. Within 24 hours of discovery, notify the KDHE Central Office (email – cseeds@kdheks.gov), (fax 785.296.0086), (telephone 785.296.5517) or your local KDHE district office. Written notification is required within 5 days of discovery. If the incident is not corrected within 5 days, send a written notification to KDHE indicating the status. This form is to be sent to KDHE when the incident ends.

KDHE Person Contacted: Chris Seeds Date: 1/9/18 Time: 10:02 am

3. Date Incident Discovered: 1/8/2018^{PM} Time: 8:45 pm
 4. Date Incident Ended: 1/8/2018^{PM} Time: 10:50 pm

5. Total estimated gallons bypassed, spilled, or routed through failed equipment for all locations on this form: 1500 gallons

6. If rainfall induced event, approximate inches of rainfall n/a

If multiple locations listed below due to rain event, check here

7. Incident Location: (check all that apply)
- | | |
|--|--|
| <input type="checkbox"/> Plant | <input type="checkbox"/> City Collection Line (Line Break / Joint) |
| <input type="checkbox"/> Lift/Pump Station | <input type="checkbox"/> Private Sewer Line |
| <input type="checkbox"/> Peak Flow Basin | <input type="checkbox"/> Basement |
| <input checked="" type="checkbox"/> Manhole(s) | <input type="checkbox"/> Other (specify below) |

Identify **All** Incident Locations by Name, Street Address or Manhole Number as appropriate.
 Jack Leroy called concerning a sewer smell at 720 Kickapoo Street. The upstream manhole is 0112.3 and the downstream manhole is 0151.1.

8. Cause of Incident:
- | | |
|---|--|
| <input type="checkbox"/> Intentional Bypass for Repair/Construction | <input type="checkbox"/> Equipment Failure |
| <input type="checkbox"/> Excessive Rainfall, Snow Melt | <input type="checkbox"/> Control System Failure |
| <input type="checkbox"/> Unplanned Construction Related Break | <input type="checkbox"/> Power Related Failure |
| <input type="checkbox"/> City Line Break (Not Construction Related) | <input type="checkbox"/> Operations Related Failure |
| <input checked="" type="checkbox"/> City Line Blockage | <input type="checkbox"/> Maintenance Related Failure |
| <input type="checkbox"/> Private Line Break | <input type="checkbox"/> Vandalism |
| <input type="checkbox"/> Private Line Blockage | <input type="checkbox"/> Other |
| <input type="checkbox"/> Lagoon High Level | |

Additional explanation of reason for Incident: (use additional page if necessary)
 Upon arrival our crew found that manhole 0112.3 was overflow at an estimated rate of 25 gallons a minute.

9. Corrective Action, if any: (use additional page if necessary)
 Our crew cleaned the line and the water started to recede. The overflow did reach the storm drain. We have taken ecoli samples and placed out contaminated creek sign. We are also investigating as the the cause of the overflow.

Name: Chuck Staples Date: 1/09/18
 Title: Superintendent Phone: 913-682-1090

When Completed, E-mail to: cseeds@kdheks.gov

**KANSAS DEPARTMENT OF HEALTH AND ENVIRONMENT
WASTEWATER BYPASS REPORT FORM**

1. FACILITY NAME: Fort Leavenworth Kansas Permit # M-MO12-IO 01

2. Within 24 Hours of Discovery, Notify the KDHE Central Office (email – cseeds@kdhe.state.ks.us), (fax 785.296.0086), (telephone 785.296.5517) or your KDHE local district office. Written notification required within 5 days of discovery.

KDHE Person Contacted: Cris Seeds Date: 1/17/2018 Time: 11:30am

3. Date Bypass Discovered: 1/17/2018 Time: 9:00am

4. Date Bypass Ended: 1/17/2018 Time: 9:20am

5. Total Estimated Gallons Bypassed for All Locations on this Form: 500 gallons

6. If rainfall event, approximate inches of rainfall N/A

If multiple bypass locations listed below due to rain event, check here _____

7. Bypass Location: (check all that apply)

<input type="checkbox"/> Plant	<input type="checkbox"/> City Collection Line
<input type="checkbox"/> Lift/Pump Station	<input type="checkbox"/> Private Sewer Line
<input type="checkbox"/> Peak Flow Basin	<input checked="" type="checkbox"/> Other (specify below)
<input type="checkbox"/> Manhole(s) (list manhole #'s below)	
<input type="checkbox"/> Holding Tank	

8. Cause of Bypass: (definitions available at <http://www.kdheks.gov/water/tech.html>)

<input checked="" type="checkbox"/> Intentional Bypass for Repair/Construction	<input checked="" type="checkbox"/> Equipment Failure
<input type="checkbox"/> Excessive Rainfall, Snow Melt	<input type="checkbox"/> Control System Failure
<input type="checkbox"/> Unplanned Construction Related Break	<input type="checkbox"/> Power Related Failure
<input type="checkbox"/> City Line Break (Not Construction Related)	<input type="checkbox"/> Operations Related Failure
<input type="checkbox"/> City Line Blockage	<input type="checkbox"/> Maintenance Related Failure
<input type="checkbox"/> Private Line Break	<input type="checkbox"/> Vandalism
<input type="checkbox"/> Private Line Blockage	<input type="checkbox"/> Spill
<input type="checkbox"/> Lagoon High Level	<input type="checkbox"/> Other

Additional explanation of reason for bypass: (use additional page if necessary)
A toilet within Hunt's Lodge was continuously flushing which caused an overflow.

9. Corrective Action, if any: (use additional page if necessary)

Lime was placed in the area where the overflow occurred and contacted DPW to resolve the issue.

Name: Andrew Turner Date: 1/17/2018

Title: Environmental, Health and Safety Specialist

When Completed, Mail to: Kansas Department of Health and Environment
Attn: Chris Seeds
1000 SW Jackson St., Suite 420
Topeka, KS 66612-1367

**KANSAS DEPARTMENT OF HEALTH AND ENVIRONMENT
WASTEWATER INCIDENT REPORT FORM**

Definitions are available at <http://www.kdheks.gov/water/tech.html>

Collection System Bypass In-Plant Diversion Upset In-Plant Flow Through Spill

1. FACILITY NAME: City of Leavenworth Kansas Permit # M-M012-I001
 2. Within 24 hours of discovery, notify the KDHE Central Office (email – cseeds@kdheks.gov), (fax 785.296.0086), (telephone 785.296.5517) or your local KDHE district office. Written notification is required within 5 days of discovery. If the incident is not corrected within 5 days, send a written notification to KDHE indicating the status. This form is to be sent to KDHE when the incident ends.

KDHE Person Contacted: Chris Seeds Date: 1/26/18 Time: 7:53 am

3. Date Incident Discovered: 1/23/2018 Time: 12:02 pm
 4. Date Incident Ended: 1/25/2018 Time: 4:00 pm

5. Total estimated gallons bypassed, spilled, or routed through failed equipment for all locations on this form: 200 gallon contained in basement

6. If rainfall induced event, approximate inches of rainfall n/a
 If multiple locations listed below due to rain event, check here

7. Incident Location: (check all that apply)
- | | |
|--|--|
| <input type="checkbox"/> Plant | <input type="checkbox"/> City Collection Line (Line Break / Joint) |
| <input type="checkbox"/> Lift/Pump Station | <input checked="" type="checkbox"/> Private Sewer Line |
| <input type="checkbox"/> Peak Flow Basin | <input checked="" type="checkbox"/> Basement |
| <input type="checkbox"/> Manhole(s) | <input type="checkbox"/> Other (specify below) |

Identify **All** Incident Locations by Name, Street Address or Manhole Number as appropriate.
 We received a call from City Hall stating the resident at 1002 North 12th Street had water coming into his basement. There are 5 homes on this private line.

8. Cause of Incident:
- | | |
|---|--|
| <input type="checkbox"/> Intentional Bypass for Repair/Construction | <input type="checkbox"/> Equipment Failure |
| <input type="checkbox"/> Excessive Rainfall, Snow Melt | <input type="checkbox"/> Control System Failure |
| <input type="checkbox"/> Unplanned Construction Related Break | <input type="checkbox"/> Power Related Failure |
| <input type="checkbox"/> City Line Break (Not Construction Related) | <input type="checkbox"/> Operations Related Failure |
| <input type="checkbox"/> City Line Blockage | <input type="checkbox"/> Maintenance Related Failure |
| <input type="checkbox"/> Private Line Break | <input type="checkbox"/> Vandalism |
| <input checked="" type="checkbox"/> Private Line Blockage | <input type="checkbox"/> Other |
| <input type="checkbox"/> Lagoon High Level | |

Additional explanation of reason for Incident: (use additional page if necessary)
 Once our crew verified this was a private line we informed the resident that he needed to call a plumber.

9. Corrective Action, if any: (use additional page if necessary)
 The owner contacted a plumber and then we contacted the owner to verify the line was open. We have asked to dye test this line to determine where this flow goes into the city main at. The owner is to call back to schedule this dye test.

Name: Chuck Staples Date: 1/26/18
 Title: Superintendent Phone: 913-682-1090

When Completed, E-mail to: cseeds@kdheks.gov
 Kansas Department of Health & Environment – Attn: Chris Seeds

**KANSAS DEPARTMENT OF HEALTH AND ENVIRONMENT
WASTEWATER INCIDENT REPORT FORM**

Definitions are available at <http://www.kdheks.gov/water/tech.html>

Collection System Bypass In-Plant Diversion Upset In-Plant Flow Through Spill

1. FACILITY NAME: City of Leavenworth Kansas Permit # M-M012-I001
2. Within 24 hours of discovery, notify the KDHE Central Office (email – cseeds@kdheks.gov), (fax 785.296.0086), (telephone 785.296.5517) or your local KDHE district office. Written notification is required within 5 days of discovery. If the incident is not corrected within 5 days, send a written notification to KDHE indicating the status. This form is to be sent to KDHE when the incident ends.

KDHE Person Contacted: Chris Seeds Date: 3/6/18 Time: 7:31 am

3. Date Incident Discovered: 3/2/2018 Time: 9:35 am
4. Date Incident Ended: 3/6/2018 Time: 3/05/18
5. Total estimated gallons bypassed, spilled, or routed through failed equipment for all locations on this form: 7 gallons
6. If rainfall induced event, approximate inches of rainfall n/a
 If multiple locations listed below due to rain event, check here

7. Incident Location: (check all that apply)
- | | |
|--|--|
| <input type="checkbox"/> Plant | <input type="checkbox"/> City Collection Line (Line Break / Joint) |
| <input type="checkbox"/> Lift/Pump Station | <input checked="" type="checkbox"/> Private Sewer Line |
| <input type="checkbox"/> Peak Flow Basin | <input type="checkbox"/> Basement |
| <input type="checkbox"/> Manhole(s) | <input type="checkbox"/> Other (specify below) |

Identify **All** Incident Locations by Name, Street Address or Manhole Number as appropriate.
City Hall called stating that water was running out of a clean out at 1010 Ironmoulder Street. The upstream manhole is 0428 and the downstream is 0427.

8. Cause of Incident:
- | | |
|---|--|
| <input type="checkbox"/> Intentional Bypass for Repair/Construction | <input type="checkbox"/> Equipment Failure |
| <input type="checkbox"/> Excessive Rainfall, Snow Melt | <input type="checkbox"/> Control System Failure |
| <input type="checkbox"/> Unplanned Construction Related Break | <input type="checkbox"/> Power Related Failure |
| <input type="checkbox"/> City Line Break (Not Construction Related) | <input type="checkbox"/> Operations Related Failure |
| <input type="checkbox"/> City Line Blockage | <input type="checkbox"/> Maintenance Related Failure |
| <input type="checkbox"/> Private Line Break | <input type="checkbox"/> Vandalism |
| <input checked="" type="checkbox"/> Private Line Blockage | <input type="checkbox"/> Other |
| <input type="checkbox"/> Lagoon High Level | |

Additional explanation of reason for Incident: (use additional page if necessary)
Upon arrival our crews checked the up and downstream manholes. We rodded 231 feet with no problems. We placed socks around the clean out and contacted the owner and informed him he needed to call a plumber.

9. Corrective Action, if any: (use additional page if necessary)
We contacted the owner and a plumber arrived on March 5, 2018 and opened the line at 3:00 pm

Name: Chuck Staples Date: 3/06/18
Title: Superintendent Phone: 913-682-1090

When Completed, E-mail to: cseeds@kdheks.gov
Kansas Department of Health & Environment – Attn: Chris Seeds

**KANSAS DEPARTMENT OF HEALTH AND ENVIRONMENT
WASTEWATER INCIDENT REPORT FORM**

Definitions are available at <http://www.kdheks.gov/water/tech.html>

Collection System Bypass In-Plant Diversion Upset In-Plant Flow Through Spill

1. FACILITY NAME: Leavenworth, City of Kansas Permit # M-MO12-IO01

2. Within 24 hours of discovery, notify the KDHE Central Office (email – cseeds@kdheks.gov), (fax 785.296.0086), (telephone 785.296.5517) or your local KDHE district office. Written notification is required within 5 days of discovery. If the incident is not corrected within 5 days, send a written notification to KDHE indicating the status. This form is to be sent to KDHE when the incident ends.

KDHE Person Contacted: Chris Seeds Date: 3/15/18 Time: 5:02 pm

3. Date Incident Discovered: 3/15/2018 Time: 3:30 pm

4. Date Incident Ended: 3/16/2018 Time: 5:00pm

5. Total estimated gallons bypassed, spilled, or routed through failed equipment for all locations on this form: Estimated 25 gallons

6. If rainfall induced event, approximate inches of rainfall n/a

If multiple locations listed below due to rain event, check here

7. Incident Location: (check all that apply)

- | | |
|--|--|
| <input type="checkbox"/> Plant | <input type="checkbox"/> City Collection Line (Line Break / Joint) |
| <input type="checkbox"/> Lift/Pump Station | <input checked="" type="checkbox"/> Private Sewer Line |
| <input type="checkbox"/> Peak Flow Basin | <input type="checkbox"/> Basement |
| <input type="checkbox"/> Manhole(s) | <input type="checkbox"/> Other (specify below) |

Identify **All** Incident Locations by Name, Street Address or Manhole Number as appropriate.

1140 Ironmoulders

8. Cause of Incident:

- | | |
|---|--|
| <input type="checkbox"/> Intentional Bypass for Repair/Construction | <input type="checkbox"/> Equipment Failure |
| <input type="checkbox"/> Excessive Rainfall, Snow Melt | <input type="checkbox"/> Control System Failure |
| <input type="checkbox"/> Unplanned Construction Related Break | <input type="checkbox"/> Power Related Failure |
| <input type="checkbox"/> City Line Break (Not Construction Related) | <input type="checkbox"/> Operations Related Failure |
| <input type="checkbox"/> City Line Blockage | <input type="checkbox"/> Maintenance Related Failure |
| <input type="checkbox"/> Private Line Break | <input type="checkbox"/> Vandalism |
| <input checked="" type="checkbox"/> Private Line Blockage | <input type="checkbox"/> Other |
| <input type="checkbox"/> Lagoon High Level | |

Additional explanation of reason for Incident: (use additional page if necessary)

Backing up in basement of house. Sump pump was pumping sewage out into the street.

9. Corrective Action, if any: (use additional page if necessary)

They Called plumber to open line. Renters were requested to unplug sump pump as well.

Name: Chuck Staples

Date: 1/15/2018

Title: Superintendent

Phone: 913-682-1090

When Completed, E-mail to: cseeds@kdheks.gov

Kansas Department of Health & Environment – Attn: Chris Seeds
Or Mail to: 1000 SW Jackson St., Suite 420, Topeka, KS 66612-1367
Fax 785.296.0086

**KANSAS DEPARTMENT OF HEALTH AND ENVIRONMENT
WASTEWATER INCIDENT REPORT FORM**

Definitions are available at <http://www.kdheks.gov/water/tech.html>

Collection System Bypass In-Plant Diversion Upset In-Plant Flow Through Spill

1. FACILITY NAME: City of Leavenworth Kansas Permit # M-M012-I001
2. Within 24 hours of discovery, notify the KDHE Central Office (email – cseeds@kdheks.gov), (fax 785.296.0086), (telephone 785.296.5517) or your local KDHE district office. Written notification is required within 5 days of discovery. If the incident is not corrected within 5 days, send a written notification to KDHE indicating the status. This form is to be sent to KDHE when the incident ends.

KDHE Person Contacted: Chris Seeds Date: 3/29/18 Time: 3:42 pm

3. Date Incident Discovered: 3/22/2018 Time: 9:50 am
4. Date Incident Ended: 3/29/2018 Time: 3:30 pm
5. Total estimated gallons bypassed, spilled, or routed through failed equipment for all locations on this form: 5 gallons
6. If rainfall induced event, approximate inches of rainfall n/a
 If multiple locations listed below due to rain event, check here

7. Incident Location: (check all that apply)
- | | |
|--|--|
| <input type="checkbox"/> Plant | <input type="checkbox"/> City Collection Line (Line Break / Joint) |
| <input type="checkbox"/> Lift/Pump Station | <input checked="" type="checkbox"/> Private Sewer Line |
| <input type="checkbox"/> Peak Flow Basin | <input type="checkbox"/> Basement |
| <input type="checkbox"/> Manhole(s) | <input type="checkbox"/> Other (specify below) |

Identify **All** Incident Locations by Name, Street Address or Manhole Number as appropriate.
The neighbor of 805 Columbia St called stating water was running into their yard. The upstream manhole is 0839 and the downstream manhole is 0840.

8. Cause of Incident:
- | | |
|---|--|
| <input type="checkbox"/> Intentional Bypass for Repair/Construction | <input type="checkbox"/> Equipment Failure |
| <input type="checkbox"/> Excessive Rainfall, Snow Melt | <input type="checkbox"/> Control System Failure |
| <input type="checkbox"/> Unplanned Construction Related Break | <input type="checkbox"/> Power Related Failure |
| <input type="checkbox"/> City Line Break (Not Construction Related) | <input type="checkbox"/> Operations Related Failure |
| <input type="checkbox"/> City Line Blockage | <input type="checkbox"/> Maintenance Related Failure |
| <input type="checkbox"/> Private Line Break | <input type="checkbox"/> Vandalism |
| <input checked="" type="checkbox"/> Private Line Blockage | <input type="checkbox"/> Other |
| <input type="checkbox"/> Lagoon High Level | |

Additional explanation of reason for Incident: (use additional page if necessary)
Upon arrival we checked the upstream and downstream manholes and had good flow. Then we rodded 192 feet with no problems. In the backyard there was a hole that had water coming out. This is a private line issue.

9. Corrective Action, if any: (use additional page if necessary)
We contacted the owner and placed socks around the broken cleanout. A repair had been completed a few months and the owner thought the his line was broken due to that repair. The owner called me at 3:35 this afternoon and said he got the line open.

Name: Chuck Staples Date: 3/29/18
Title: Superintendent Phone: 913-682-1090

**KANSAS DEPARTMENT OF HEALTH AND ENVIRONMENT
WASTEWATER INCIDENT REPORT FORM**

Definitions are available at <http://www.kdheks.gov/water/tech.html>

Collection System Bypass In-Plant Diversion Upset In-Plant Flow Through Spill

1. FACILITY NAME: City of Leavenworth Kansas Permit # M-M012-1001
2. Within 24 hours of discovery, notify the KDHE Central Office (email – cseeds@kdheks.gov), (fax 785.296.0086), (telephone 785.296.5517) or your local KDHE district office. Written notification is required within 5 days of discovery. If the incident is not corrected within 5 days, send a written notification to KDHE indicating the status. This form is to be sent to KDHE when the incident ends.

KDHE Person Contacted: Chris Seeds Date: 4/5/18 Time: 7:42 am

3. Date Incident Discovered: 3/29/2018 Time: 8:15 am
4. Date Incident Ended: 4/4/2018 Time: 3:30 pm
5. Total estimated gallons bypassed, spilled, or routed through failed equipment for all locations on this form: 10 gallons, contained in basement
6. If rainfall induced event, approximate inches of rainfall n/a
 If multiple locations listed below due to rain event, check here

7. Incident Location: (check all that apply)
- | | |
|--|--|
| <input type="checkbox"/> Plant | <input type="checkbox"/> City Collection Line (Line Break / Joint) |
| <input type="checkbox"/> Lift/Pump Station | <input checked="" type="checkbox"/> Private Sewer Line |
| <input type="checkbox"/> Peak Flow Basin | <input checked="" type="checkbox"/> Basement |
| <input type="checkbox"/> Manhole(s) | <input type="checkbox"/> Other (specify below) |

Identify **All** Incident Locations by Name, Street Address or Manhole Number as appropriate.
Mrs. Goodlin called stating she had water backing up in her basement drain at 760 Frank St. This is a private lateral with at least 4 other houses on it.

8. Cause of Incident:
- | | |
|---|--|
| <input type="checkbox"/> Intentional Bypass for Repair/Construction | <input type="checkbox"/> Equipment Failure |
| <input type="checkbox"/> Excessive Rainfall, Snow Melt | <input type="checkbox"/> Control System Failure |
| <input type="checkbox"/> Unplanned Construction Related Break | <input type="checkbox"/> Power Related Failure |
| <input type="checkbox"/> City Line Break (Not Construction Related) | <input type="checkbox"/> Operations Related Failure |
| <input type="checkbox"/> City Line Blockage | <input type="checkbox"/> Maintenance Related Failure |
| <input type="checkbox"/> Private Line Break | <input type="checkbox"/> Vandalism |
| <input checked="" type="checkbox"/> Private Line Blockage | <input type="checkbox"/> Other |
| <input type="checkbox"/> Lagoon High Level | |

Additional explanation of reason for Incident: (use additional page if necessary)
We cleaned the city line because at the time we was unaware that his private line existed. We cctv'd the city line and and dyes the houses downstream of 760 Frank. This is when if noticed that dye was coming from the other city line.

9. Corrective Action, if any: (use additional page if necessary)
Once we found this was a private line we informed the owner that they needed to call a plumber but they needed to go through their home warranty service. The owner contacted me 4/04/18 at 3:45 pm stating her line was clear.

Name: Chuck Staples Date: 4/05/18
Title: Superintendent Phone: 913-682-1090

**KANSAS DEPARTMENT OF HEALTH AND ENVIRONMENT
WASTEWATER INCIDENT REPORT FORM**

Definitions are available at <http://www.kdheks.gov/water/tech.html>

Collection System Bypass In-Plant Diversion Upset In-Plant Flow Through Spill

1. FACILITY NAME: City of Leavenworth Kansas Permit # M-M012-I001
 2. Within 24 hours of discovery, notify the KDHE Central Office (email – cseeds@kdheks.gov), (fax 785.296.0086), (telephone 785.296.5517) or your local KDHE district office. Written notification is required within 5 days of discovery. If the incident is not corrected within 5 days, send a written notification to KDHE indicating the status. This form is to be sent to KDHE when the incident ends.

KDHE Person Contacted: Chris Seeds Date: 4/6/18 Time: 7:30am

3. Date Incident Discovered: 4/5/2018 Time: 5:15 pm
 4. Date Incident Ended: 4/5/2018 Time: 6:25 pm

5. Total estimated gallons bypassed, spilled, or routed through failed equipment for all locations on this form: 2 gallons on grass

6. If rainfall induced event, approximate inches of rainfall n/a
 If multiple locations listed below due to rain event, check here

7. Incident Location: (check all that apply)
 Plant City Collection Line (Line Break / Joint)
 Lift/Pump Station Private Sewer Line
 Peak Flow Basin Basement
 Manhole(s) Other (specify below)

Identify **All** Incident Locations by Name, Street Address or Manhole Number as appropriate.
 The Conoco station at 300 north 4th st. The upstream manhole is 0196.1 and the upstream manhole is 0196 and is also a flushtank.

8. Cause of Incident:
- | | |
|---|--|
| <input type="checkbox"/> Intentional Bypass for Repair/Construction | <input type="checkbox"/> Equipment Failure |
| <input type="checkbox"/> Excessive Rainfall, Snow Melt | <input type="checkbox"/> Control System Failure |
| <input type="checkbox"/> Unplanned Construction Related Break | <input type="checkbox"/> Power Related Failure |
| <input type="checkbox"/> City Line Break (Not Construction Related) | <input type="checkbox"/> Operations Related Failure |
| <input type="checkbox"/> City Line Blockage | <input type="checkbox"/> Maintenance Related Failure |
| <input type="checkbox"/> Private Line Break | <input type="checkbox"/> Vandalism |
| <input checked="" type="checkbox"/> Private Line Blockage | <input type="checkbox"/> Other |
| <input type="checkbox"/> Lagoon High Level | |

Additional explanation of reason for Incident: (use additional page if necessary)
 Upon arrival there was a little water standing in the downstream manhole which is normal. Our crew rodded 150 feet with no problems. Employee had tried to clean out lateral with a garden hose which cause sewage to spill on the grass.

9. Corrective Action, if any: (use additional page if necessary)
We cleaned our line and spread lime on the grass. We also informed the employee that they needed to call a plumber. Plumber cleaned the line last night, time unknown.

Name: Chuck Staples Date: 4/06/08
 Title: Superintendent Phone: 913-682-1090

When Completed, E-mail to: cseeds@kdheks.gov

**KANSAS DEPARTMENT OF HEALTH AND ENVIRONMENT
WASTEWATER BYPASS REPORT FORM**

1. FACILITY NAME: Fort Leavenworth Kansas Permit # M-MO12-IO 01

2. Within 24 Hours of Discovery, Notify the KDHE Central Office (email – cseeds@kdhe.state.ks.us), (fax 785.296.0086), (telephone 785.296.5517) or your KDHE local district office. Written notification required within 5 days of discovery.

KDHE Person Contacted: Cris Seeds Date: 4/12/2018 Time: 11:42am

3. Date Bypass Discovered: 4/11/2018 Time: 3:20pm

4. Date Bypass Ended: 4/11/2018 Time: 4:20pm

5. Total Estimated Gallons Bypassed for All Locations on this Form: 25 gallons

6. If rainfall event, approximate inches of rainfall N/A

If multiple bypass locations listed below due to rain event, check here _____

7. Bypass Location: (check all that apply)

- | | |
|--|--|
| <input type="checkbox"/> Plant | <input type="checkbox"/> City Collection Line |
| <input type="checkbox"/> Lift/Pump Station | <input checked="" type="checkbox"/> Private Sewer Line |
| <input type="checkbox"/> Peak Flow Basin | <input type="checkbox"/> Other (specify below) |
| <input type="checkbox"/> Manhole(s) (list manhole #'s below) | |

8. Cause of Bypass: (definitions available at <http://www.kdheks.gov/water/tech.html>)

- | | |
|---|--|
| <input type="checkbox"/> Intentional Bypass for Repair/Construction | <input type="checkbox"/> Equipment Failure |
| <input type="checkbox"/> Excessive Rainfall, Snow Melt | <input type="checkbox"/> Control System Failure |
| <input type="checkbox"/> Unplanned Construction Related Break | <input type="checkbox"/> Power Related Failure |
| <input type="checkbox"/> City Line Break (Not Construction Related) | <input type="checkbox"/> Operations Related Failure |
| <input type="checkbox"/> City Line Blockage | <input type="checkbox"/> Maintenance Related Failure |
| <input type="checkbox"/> Private Line Break | <input type="checkbox"/> Vandalism |
| <input checked="" type="checkbox"/> Private Line Blockage | <input type="checkbox"/> Spill |
| <input type="checkbox"/> Lagoon High Level | <input type="checkbox"/> Other |

Additional explanation of reason for bypass: (use additional page if necessary)
Back up was caused by grease build up along with baby wipes within the line.

9. Corrective Action, if any: (use additional page if necessary)

The overflow materials were removed from the ground and lime was placed on the ground to clean where the wastewater had spilled.

Name: Andrew Turner Date: 4/12/2018

Title: Environmental, Health and Safety Specialist

When Completed, Mail to: Kansas Department of Health and Environment
Attn: Chris Seeds
1000 SW Jackson St., Suite 420
Topeka, KS 66612-1367

**KANSAS DEPARTMENT OF HEALTH AND ENVIRONMENT
WASTEWATER INCIDENT REPORT FORM**

Definitions are available at <http://www.kdheks.gov/water/tech.html>

Collection System Bypass In-Plant Diversion Upset In-Plant Flow Through Spill

1. FACILITY NAME: City of Leavenworth Kansas Permit # M-M012-I001
2. Within 24 hours of discovery, notify the KDHE Central Office (email – cseeds@kdheks.gov), (fax 785.296.0086), (telephone 785.296.5517) or your local KDHE district office. Written notification is required within 5 days of discovery. If the incident is not corrected within 5 days, send a written notification to KDHE indicating the status. This form is to be sent to KDHE when the incident ends.

KDHE Person Contacted: Chris Seeds Date: 4/24/18 Time: 7:34 am

3. Date Incident Discovered: 4/22/2018 Time: 8:29 pm
4. Date Incident Ended: 4/23/2018 Time: 3:30 pm
5. Total estimated gallons bypassed, spilled, or routed through failed equipment for all locations on this form: Estimated 20 gallons
6. If rainfall induced event, approximate inches of rainfall n/a
 If multiple locations listed below due to rain event, check here

7. Incident Location: (check all that apply)
- | | |
|--|--|
| <input type="checkbox"/> Plant | <input type="checkbox"/> City Collection Line (Line Break / Joint) |
| <input type="checkbox"/> Lift/Pump Station | <input checked="" type="checkbox"/> Private Sewer Line |
| <input type="checkbox"/> Peak Flow Basin | <input type="checkbox"/> Basement |
| <input type="checkbox"/> Manhole(s) | <input type="checkbox"/> Other (specify below) |

Identify **All** Incident Locations by Name, Street Address or Manhole Number as appropriate.
Mr. Arenz called stating his clean out was backing up at 601 Middle st. The upstream manhole is 0552 and the downstream manhole is 0571.

8. Cause of Incident:
- | | |
|---|--|
| <input type="checkbox"/> Intentional Bypass for Repair/Construction | <input type="checkbox"/> Equipment Failure |
| <input type="checkbox"/> Excessive Rainfall, Snow Melt | <input type="checkbox"/> Control System Failure |
| <input type="checkbox"/> Unplanned Construction Related Break | <input type="checkbox"/> Power Related Failure |
| <input type="checkbox"/> City Line Break (Not Construction Related) | <input type="checkbox"/> Operations Related Failure |
| <input type="checkbox"/> City Line Blockage | <input type="checkbox"/> Maintenance Related Failure |
| <input type="checkbox"/> Private Line Break | <input type="checkbox"/> Vandalism |
| <input checked="" type="checkbox"/> Private Line Blockage | <input type="checkbox"/> Other |
| <input type="checkbox"/> Lagoon High Level | |

Additional explanation of reason for Incident: (use additional page if necessary)
Upon arrival our crew checked the upstream and downstream manholes and noticed good flow. They rodded the line for 373 feet and found no blockage. We placed containment socks around the clean out and spread lime.

9. Corrective Action, if any: (use additional page if necessary)
Our crew informed the owner that he needed to call a plumber and to use as little as water as necessary until the line is open. We sent this information to our inspection office and I was informed yesterday around 3:45 pm that the line had been rodded and was flowing.

Name: Chuck Staples Date: 4/24/18
Title: Superintendent Phone: 913-682-1090

**KANSAS DEPARTMENT OF HEALTH AND ENVIRONMENT
WASTEWATER INCIDENT REPORT FORM**

Definitions are available at <http://www.kdheks.gov/water/tech.html>

Collection System Bypass In-Plant Diversion Upset In-Plant Flow Through Spill

1. FACILITY NAME: City of Leavenworth Kansas Permit # M-M012-I001
2. Within 24 hours of discovery, notify the KDHE Central Office (email – cseeds@kdheks.gov), (fax 785.296.0086), (telephone 785.296.5517) or your local KDHE district office. Written notification is required within 5 days of discovery. If the incident is not corrected within 5 days, send a written notification to KDHE indicating the status. This form is to be sent to KDHE when the incident ends.

KDHE Person Contacted: Chris Seeds Date: 5/4/18 Time: 9:21 am

3. Date Incident Discovered: 5/3/2018 Time: 4:15 pm
4. Date Incident Ended: 5/3/2018 Time: 6:40 pm

5. Total estimated gallons bypassed, spilled, or routed through failed equipment for all locations on this form: 250 gallons

6. If rainfall induced event, approximate inches of rainfall n/a

If multiple locations listed below due to rain event, check here

7. Incident Location: (check all that apply)

- | | |
|--|--|
| <input type="checkbox"/> Plant | <input type="checkbox"/> City Collection Line (Line Break / Joint) |
| <input type="checkbox"/> Lift/Pump Station | <input checked="" type="checkbox"/> Private Sewer Line |
| <input type="checkbox"/> Peak Flow Basin | <input type="checkbox"/> Basement |
| <input type="checkbox"/> Manhole(s) | <input type="checkbox"/> Other (specify below) |

Identify **All** Incident Locations by Name, Street Address or Manhole Number as appropriate.

8. Cause of Incident:

- | | |
|---|--|
| <input type="checkbox"/> Intentional Bypass for Repair/Construction | <input type="checkbox"/> Equipment Failure |
| <input type="checkbox"/> Excessive Rainfall, Snow Melt | <input type="checkbox"/> Control System Failure |
| <input type="checkbox"/> Unplanned Construction Related Break | <input type="checkbox"/> Power Related Failure |
| <input type="checkbox"/> City Line Break (Not Construction Related) | <input type="checkbox"/> Operations Related Failure |
| <input type="checkbox"/> City Line Blockage | <input type="checkbox"/> Maintenance Related Failure |
| <input checked="" type="checkbox"/> Private Line Break | <input type="checkbox"/> Vandalism |
| <input type="checkbox"/> Private Line Blockage | <input type="checkbox"/> Other |
| <input type="checkbox"/> Lagoon High Level | |

Additional explanation of reason for Incident: (use additional page if necessary)

We recived an email from our Service Center stating the resident at 1309 Pottawatomie St had sewer in his yard caused by a plumber cleaning out his neighbors lateral, this is a private line issue.

9. Corrective Action, if any: (use additional page if necessary)

We responded to the call and started cleaning up the debris on the street. We placed contaminated creek sign out and flushed the storm drain. We will run e-coli test today to determine if the signs can be removed.

Name: Chuck Staples Date: 5/04/18
Title: Superintendent Phone: 913-682-1090

When Completed, E-mail to: cseeds@kdheks.gov
Kansas Department of Health & Environment – Attn: Chris Seeds

KANSAS DEPARTMENT OF HEALTH AND ENVIRONMENT
WASTEWATER BYPASS REPORT FORM

1. FACILITY NAME: Fort Leavenworth Kansas Permit # M-MO12-IO 01

2. Within 24 Hours of Discovery, Notify the KDHE Central Office (email – cseeds@kdhe.state.ks.us), (fax 785.296.0086), (telephone 785.296.5517) or your KDHE local district office. Written notification required within 5 days of discovery.

KDHE Person Contacted: Cris Seeds Date: 5/9/2018 Time: 1:55pm

3. Date Bypass Discovered: 5/8/2018 Time: 3:05pm

4. Date Bypass Ended: 5/9/2018 Time: 10:30am

5. Total Estimated Gallons Bypassed for All Locations on this Form: 2,000 gallons

6. If rainfall event, approximate inches of rainfall N/A

If multiple bypass locations listed below due to rain event, check here _____

7. Bypass Location: (check all that apply)

- | | |
|---|--|
| <input type="checkbox"/> Plant | <input type="checkbox"/> City Collection Line |
| <input type="checkbox"/> Lift/Pump Station | <input type="checkbox"/> Private Sewer Line |
| <input type="checkbox"/> Peak Flow Basin | <input type="checkbox"/> Other (specify below) |
| <input checked="" type="checkbox"/> Manhole(s) (list manhole #'s below) | |
| <u>SSMH-13-1292</u> | |

8. Cause of Bypass: (definitions available at <http://www.kdheks.gov/water/tech.html>)

- | | |
|---|--|
| <input type="checkbox"/> Intentional Bypass for Repair/Construction | <input type="checkbox"/> Equipment Failure |
| <input type="checkbox"/> Excessive Rainfall, Snow Melt | <input type="checkbox"/> Control System Failure |
| <input type="checkbox"/> Unplanned Construction Related Break | <input type="checkbox"/> Power Related Failure |
| <input type="checkbox"/> City Line Break (Not Construction Related) | <input type="checkbox"/> Operations Related Failure |
| <input checked="" type="checkbox"/> City Line Blockage | <input type="checkbox"/> Maintenance Related Failure |
| <input type="checkbox"/> Private Line Break | <input type="checkbox"/> Vandalism |
| <input type="checkbox"/> Private Line Blockage | <input type="checkbox"/> Spill |
| <input type="checkbox"/> Lagoon High Level | <input type="checkbox"/> Other |

Additional explanation of reason for bypass: (use additional page if necessary)

The reason for the blockage was a collection of baby/cleaning wipes and grease that caused the sewer main to clog and overflow.

9. Corrective Action, if any: (use additional page if necessary)

Once the blockage was removed and overflow had been stopped, the solid material was loaded into a dump truck and taken to a lift station to dry. Lime was distributed on the ground where the overflow had occurred to kill the remaining bacteria.

Name: Andrew Turner Date: 5/9/2018

Title: Environmental, Health and Safety Specialist

When Completed, Mail to: Kansas Department of Health and Environment
Attn: Chris Seeds
1000 SW Jackson St., Suite 420
Topeka, KS 66612-1367

**KANSAS DEPARTMENT OF HEALTH AND ENVIRONMENT
WASTEWATER INCIDENT REPORT FORM**

Definitions are available at <http://www.kdheks.gov/water/tech.html>

Collection System Bypass In-Plant Diversion Upset In-Plant Flow Through Spill

1. FACILITY NAME: City of Leavenworth Kansas Permit # M-M012-I001
2. Within 24 hours of discovery, notify the KDHE Central Office (email – cseeds@kdheks.gov), (fax 785.296.0086), (telephone 785.296.5517) or your local KDHE district office. Written notification is required within 5 days of discovery. If the incident is not corrected within 5 days, send a written notification to KDHE indicating the status. This form is to be sent to KDHE when the incident ends.

KDHE Person Contacted: Chris Seeds Date: 5/18/18 Time: 9:07 am

3. Date Incident Discovered: 5/17/2018 Time: 11:00 am
4. Date Incident Ended: 5/17/2018 Time: 1:00 am
5. Total estimated gallons bypassed, spilled, or routed through failed equipment for all locations on this form: 2 gallon contained in basement
6. If rainfall induced event, approximate inches of rainfall n/a
 If multiple locations listed below due to rain event, check here

7. Incident Location: (check all that apply)
- | | |
|--|--|
| <input type="checkbox"/> Plant | <input type="checkbox"/> City Collection Line (Line Break / Joint) |
| <input type="checkbox"/> Lift/Pump Station | <input checked="" type="checkbox"/> Private Sewer Line |
| <input type="checkbox"/> Peak Flow Basin | <input checked="" type="checkbox"/> Basement |
| <input type="checkbox"/> Manhole(s) | <input type="checkbox"/> Other (specify below) |

Identify **All** Incident Locations by Name, Street Address or Manhole Number as appropriate.
While locating for utilities WPC's locator noticed that Heartland Midwest had bored through the lateral at 1400 Delaware street.

8. Cause of Incident:
- | | |
|--|--|
| <input type="checkbox"/> Intentional Bypass for Repair/Construction | <input type="checkbox"/> Equipment Failure |
| <input type="checkbox"/> Excessive Rainfall, Snow Melt | <input type="checkbox"/> Control System Failure |
| <input checked="" type="checkbox"/> Unplanned Construction Related Break | <input type="checkbox"/> Power Related Failure |
| <input type="checkbox"/> City Line Break (Not Construction Related) | <input type="checkbox"/> Operations Related Failure |
| <input type="checkbox"/> City Line Blockage | <input type="checkbox"/> Maintenance Related Failure |
| <input type="checkbox"/> Private Line Break | <input type="checkbox"/> Vandalism |
| <input type="checkbox"/> Private Line Blockage | <input type="checkbox"/> Other |
| <input type="checkbox"/> Lagoon High Level | |

Additional explanation of reason for Incident: (use additional page if necessary)

Tim the Assistant Superintendent responded to the scene and informed the contractor they needed to fix the lateral and call the City's plumbing inspector prior to backfill. The homeowner said there was some water backing up in the basement.

9. Corrective Action, if any: (use additional page if necessary)
Contractor repaired the line and our inspectors approved the repara around 1:00 pm May 17. 2018.

Name: Chuck Staples Date: 5/18/18
Title: Superintendent Phone: 913-682-1090

When Completed, E-mail to: cseeds@kdheks.gov
Kansas Department of Health & Environment – Attn: Chris Seeds

**KANSAS DEPARTMENT OF HEALTH AND ENVIRONMENT
WASTEWATER BYPASS REPORT FORM**

1. FACILITY NAME: Fort Leavenworth Kansas Permit # M-MO12-IO 01

2. Within 24 Hours of Discovery, Notify the KDHE Central Office (email – cseeds@kdhe.state.ks.us), (fax 785.296.0086), (telephone 785.296.5517) or your KDHE local district office. Written notification required within 5 days of discovery.

KDHE Person Contacted: Cris Seeds Date: 5/29/2018 Time: 2:20pm

3. Date Bypass Discovered: 5/29/2018 Time: 11:30am

4. Date Bypass Ended: 5/29/2018 Time: 12:15pm

5. Total Estimated Gallons Bypassed for All Locations on this Form: 3.5 gallons

6. If rainfall event, approximate inches of rainfall N/A

If multiple bypass locations listed below due to rain event, check here _____

7. Bypass Location: (check all that apply)

<input type="checkbox"/> Plant	<input type="checkbox"/> City Collection Line
<input type="checkbox"/> Lift/Pump Station	<input checked="" type="checkbox"/> Private Sewer Line
<input type="checkbox"/> Peak Flow Basin	<input type="checkbox"/> Other (specify below)
<input type="checkbox"/> Manhole(s) (list manhole #'s below)	

8. Cause of Bypass: (definitions available at <http://www.kdheks.gov/water/tech.html>)

<input type="checkbox"/> Intentional Bypass for Repair/Construction	<input type="checkbox"/> Equipment Failure
<input type="checkbox"/> Excessive Rainfall, Snow Melt	<input type="checkbox"/> Control System Failure
<input type="checkbox"/> Unplanned Construction Related Break	<input type="checkbox"/> Power Related Failure
<input type="checkbox"/> City Line Break (Not Construction Related)	<input type="checkbox"/> Operations Related Failure
<input type="checkbox"/> City Line Blockage	<input type="checkbox"/> Maintenance Related Failure
<input type="checkbox"/> Private Line Break	<input type="checkbox"/> Vandalism
<input checked="" type="checkbox"/> Private Line Blockage	<input type="checkbox"/> Spill
<input type="checkbox"/> Lagoon High Level	<input type="checkbox"/> Other

Additional explanation of reason for bypass: (use additional page if necessary)
The overflow was caused by cleaning/baby wipes blocking the line.

9. Corrective Action, if any: (use additional page if necessary)

Used a drain cleaning machine to unclog the blocked sewer line and also called Servpro on 5/29/2018 for clean up operations.

Name: Andrew Turner Date: 5/29/2018

Title: Environmental, Health and Safety Specialist

When Completed, Mail to: Kansas Department of Health and Environment
Attn: Chris Seeds
1000 SW Jackson St., Suite 420
Topeka, KS 66612-1367

USA

Rec'd
6-12-18
CA

KANSAS DEPARTMENT OF HEALTH AND ENVIRONMENT
WASTEWATER INCIDENT REPORT FORM

Definitions are available at <http://www.kdheks.gov/water/tech.htm>

Collection system Bypass In-Plant Diversion Upset In-Plant Flow Through Spill

- 1. FACILITY NAME: USP LEAVENWORTH Kansas Permit # FMO12PO06
- 2. Within 24 hours of discovery, notify the KDHE Central Office (email – cseeds@kdheks.gov), (fax 785.296.0086), (telephone 785.296.5517) or your local KDHE district office. Written notification is required within 5 days of discovery. If the incident is not corrected within 5 days, send a written notification to KDHE indicating the status. This form is to be sent to KDHE when the incident ends.

IF THE INCIDENT IS AFTER HOURS AND REPRESENTS A SIGNIFICANT PUBLIC HEALTH THREAT CALL 785.296.1679 IMMEDIATELY

KDHE Person Contacted: HELEN HOLME Date: 6/12/18 Time: 8:00 am

- 3. Date Incident Discovered: 6/2/2018 Time: 05:30 am
- 4. Date Incident Ended: 6/2/2018 Time: 05:45 am
- 5. Total estimated gallons bypassed, spilled, or routed through failed equipment for all locations on this form: 1,000 GALLONS
- 6. If rainfall induced event, approximate inches of rainfall _____
If multiple locations listed below due to rain event, check here

- 7. Incident Location: (check all that apply)

<input type="checkbox"/> Plant	<input type="checkbox"/> City Collection Line (Line Break / Joint)
<input checked="" type="checkbox"/> Lift/Pump Station	<input type="checkbox"/> Private Sewer Line
<input type="checkbox"/> Peak Flow Basin	<input type="checkbox"/> Basement
<input type="checkbox"/> Manhole(s)	<input type="checkbox"/> Other (specify below)

Identify **All** Incident Locations by Name, Street Address or Manhole Number as appropriate.

LIFT STATION LOCATED ON 1300 METROPOLITAN AVE

- 8. Cause of Incident:

<input type="checkbox"/> Intentional Bypass for Repair/Construction	<input checked="" type="checkbox"/> Equipment Failure
<input type="checkbox"/> Excessive Rainfall, Snow Melt	<input type="checkbox"/> Control System Failure
<input type="checkbox"/> Unplanned Construction Related Break	<input type="checkbox"/> Power Related Failure
<input type="checkbox"/> City Line Break (Not Construction Related)	<input type="checkbox"/> Operations Related Failure
<input type="checkbox"/> City Line Blockage	<input type="checkbox"/> Maintenance Related Failure
<input type="checkbox"/> Private Line Break	<input type="checkbox"/> Vandalism
<input type="checkbox"/> Private Line Blockage	<input type="checkbox"/> Other
<input type="checkbox"/> Lagoon High Level	

Additional explanation of reason for Incident: (use additional page if necessary)

Equipment Failure due to power outage..

- 9. Corrective Action, if any: (use additional page if necessary)
Power was restored and pumps working correctly

Name: BILLYE E CORDELL Date: 06/12/2018
Title: SAFETY MANAGER Phone: 913-578-1387

When Completed, E-mail to: cseeds@kdheks.gov
Kansas Department of Health & Environment – Attn: Chris Seeds
Or Mail to: 1000 SW Jackson St., Suite 420, Topeka , KS 66612-1367
Fax 785.296.0086

**KANSAS DEPARTMENT OF HEALTH AND ENVIRONMENT
WASTEWATER INCIDENT REPORT FORM**

Definitions are available at <http://www.kdheks.gov/water/tech.html>

Collection System Bypass In-Plant Diversion Upset In-Plant Flow Through Spill

1. FACILITY NAME: City of Leavenworth Kansas Permit # M-M012-I001
 2. Within 24 hours of discovery, notify the KDHE Central Office (email – cseeds@kdheks.gov), (fax 785.296.0086), (telephone 785.296.5517) or your local KDHE district office. Written notification is required within 5 days of discovery. If the incident is not corrected within 5 days, send a written notification to KDHE indicating the status. This form is to be sent to KDHE when the incident ends.

KDHE Person Contacted: Chris Seeds Date: 6/4/18 Time: 9:30 am

3. Date Incident Discovered: 6/3/2018 Time: 11:57 am
 4. Date Incident Ended: 6/3/2018 Time: 2:20 pm

5. Total estimated gallons bypassed, spilled, or routed through failed equipment for all locations on this form: 2200 gallons

6. If rainfall induced event, approximate inches of rainfall n/a
 If multiple locations listed below due to rain event, check here

7. Incident Location: (check all that apply)
 Plant City Collection Line (Line Break / Joint)
 Lift/Pump Station Private Sewer Line
 Peak Flow Basin Basement
 Manhole(s) Other (specify below)

Identify **All** Incident Locations by Name, Street Address or Manhole Number as appropriate.
 Darin Mann called stating that he had water running into his basement at 727 Shawnee St. This is a laundry mat. The upstream manhole is 0256.1 and the downstream manhole is 0256.

8. Cause of Incident:
- | | |
|---|--|
| <input type="checkbox"/> Intentional Bypass for Repair/Construction | <input type="checkbox"/> Equipment Failure |
| <input type="checkbox"/> Excessive Rainfall, Snow Melt | <input type="checkbox"/> Control System Failure |
| <input type="checkbox"/> Unplanned Construction Related Break | <input type="checkbox"/> Power Related Failure |
| <input type="checkbox"/> City Line Break (Not Construction Related) | <input type="checkbox"/> Operations Related Failure |
| <input checked="" type="checkbox"/> City Line Blockage | <input type="checkbox"/> Maintenance Related Failure |
| <input type="checkbox"/> Private Line Break | <input type="checkbox"/> Vandalism |
| <input type="checkbox"/> Private Line Blockage | <input type="checkbox"/> Other |
| <input type="checkbox"/> Lagoon High Level | |

Additional explanation of reason for Incident: (use additional page if necessary)
 Our crew arrived and found Mr. Mann pumping the overflow from his basement to the nearby storm drain. Our crew made Mr. Mann stop. We rodded 320 feet without hitting any blockage. We are calling this a city line issue until we cctv this line to find out what caused this overflow.

9. Corrective Action, if any: (use additional page if necessary)
 We informed Mr. Mann that we did not have a problem in the main but he said the water started to go down. We spread lime on the ground and we will go back to cctv this line for inspection. We will also take e-coli samples and prepare a transparency report for the Cities web page.

Name: Chuck Staples Date: 6/04/18
 Title: Superintendent Phone: 913-682-1090

**KANSAS DEPARTMENT OF HEALTH AND ENVIRONMENT
WASTEWATER INCIDENT REPORT FORM**

Definitions are available at <http://www.kdheks.gov/water/tech.html>

Collection System Bypass In-Plant Diversion Upset In-Plant Flow Through Spill

1. FACILITY NAME: City of Leavenworth Kansas Permit # M-M012-I001
2. Within 24 hours of discovery, notify the KDHE Central Office (email – cseeds@kdheks.gov), (fax 785.296.0086), (telephone 785.296.5517) or your local KDHE district office. Written notification is required within 5 days of discovery. If the incident is not corrected within 5 days, send a written notification to KDHE indicating the status. This form is to be sent to KDHE when the incident ends.

KDHE Person Contacted: Chris Seeds Date: 6/11/18 Time: 8:16 am

3. Date Incident Discovered: 6/7/2018 Time: 9:28 am
4. Date Incident Ended: 6/8/2018 Time: 4:50 pm
5. Total estimated gallons bypassed, spilled, or routed through failed equipment for all locations on this form: 15 gallons
6. If rainfall induced event, approximate inches of rainfall n/a
 If multiple locations listed below due to rain event, check here

7. Incident Location: (check all that apply)
 Plant City Collection Line (Line Break / Joint)
 Lift/Pump Station Private Sewer Line
 Peak Flow Basin Basement
 Manhole(s) Other (specify below)

Identify **All** Incident Locations by Name, Street Address or Manhole Number as appropriate.
J.F. Denney call asking us to clean the line at 201 Pine St. the upstream manhole is a flush tank and the downstream manhole is 0708.

8. Cause of Incident:
 Intentional Bypass for Repair/Construction Equipment Failure
 Excessive Rainfall, Snow Melt Control System Failure
 Unplanned Construction Related Break Power Related Failure
 City Line Break (Not Construction Related) Operations Related Failure
 City Line Blockage Maintenance Related Failure
 Private Line Break Vandalism
 Private Line Blockage Other
 Lagoon High Level

Additional explanation of reason for Incident: (use additional page if necessary)
At 289 feet we could not go anyfurther so we cctv'd the line and found that a lamp hole had collapsed. We proceeded with an emergency repair and the line was flowing again at 4:50 pm.

9. Corrective Action, if any: (use additional page if necessary)
We cctv'd the line when the old lamp hole was removed to check for further problems, we also dyed the lateral at 201 Pine St and found no further problems. I was sent an photo at 4:50 pm confirming the repair was completed

Name: Chuck Staples Date: 6/11/18
Title: Superintendent Phone: 913-682-1090

When Completed, E-mail to: cseeds@kdheks.gov

**KANSAS DEPARTMENT OF HEALTH AND ENVIRONMENT
WASTEWATER BYPASS REPORT FORM**

1. FACILITY NAME: Fort Leavenworth Kansas Permit # M-MO12-IO 01

2. Within 24 Hours of Discovery, Notify the KDHE Central Office (email – cseeds@kdhe.state.ks.us), (fax 785.296.0086), (telephone 785.296.5517) or your KDHE local district office. Written notification required within 5 days of discovery.

KDHE Person Contacted: Cris Seeds Date: 6/11/2018 Time: 8:18am

3. Date Bypass Discovered: 6/8/2018 Time: 6:30pm

4. Date Bypass Ended: 6/8/2018 Time: 9:30pm

5. Total Estimated Gallons Bypassed for All Locations on this Form: 1,234.28 gallons

6. If rainfall event, approximate inches of rainfall N/A

If multiple bypass locations listed below due to rain event, check here _____

7. Bypass Location (check all that apply): 110 and 122 Kansas Ave. Fort Leavenworth, 66027

- | | |
|--|--|
| <input type="checkbox"/> Plant | <input type="checkbox"/> City Collection Line |
| <input type="checkbox"/> Lift/Pump Station | <input checked="" type="checkbox"/> Private Sewer Line |
| <input type="checkbox"/> Peak Flow Basin | <input type="checkbox"/> Other (specify below) |
| <input type="checkbox"/> Manhole(s) (list manhole #'s below) | |

American water was not notified of the SSO until three hours after the SSO was discovered. The SSO was contained to the basement of the apartments.

8. Cause of Bypass: (definitions available at <http://www.kdheks.gov/water/tech.html>)

- | | |
|---|--|
| <input type="checkbox"/> Intentional Bypass for Repair/Construction | <input type="checkbox"/> Equipment Failure |
| <input type="checkbox"/> Excessive Rainfall, Snow Melt | <input type="checkbox"/> Control System Failure |
| <input type="checkbox"/> Unplanned Construction Related Break | <input type="checkbox"/> Power Related Failure |
| <input type="checkbox"/> City Line Break (Not Construction Related) | <input type="checkbox"/> Operations Related Failure |
| <input type="checkbox"/> City Line Blockage | <input type="checkbox"/> Maintenance Related Failure |
| <input type="checkbox"/> Private Line Break | <input type="checkbox"/> Vandalism |
| <input checked="" type="checkbox"/> Private Line Blockage | <input type="checkbox"/> Spill |
| <input type="checkbox"/> Lagoon High Level | <input type="checkbox"/> Other |

Additional explanation of reason for bypass: (use additional page if necessary)
There was a stick in the main that was collecting rags/wipes. Overtime, the collection of wipes caused an overflow.

9. Corrective Action, if any: (use additional page if necessary)
The stick was removed from the main along with the wipes that had collected. A drain cleaning machine was used to clean out the clean outs to ensure there was zero other backups. Servpro was contacted Friday afternoon and arrived Saturday morning to sanitize and clean the home.

Name: Andrew Turner Date: 6/11/2018

Title: Environmental, Health and Safety Specialist

When Completed, Mail to: Kansas Department of Health and Environment
 Attn: Chris Seeds
 1000 SW Jackson St., Suite 420
 Topeka, KS 66612-1367

**KANSAS DEPARTMENT OF HEALTH AND ENVIRONMENT
WASTEWATER BYPASS REPORT FORM**

1. FACILITY NAME: Fort Leavenworth Kansas Permit # M-MO12-IO 01

2. Within 24 Hours of Discovery, Notify the KDHE Central Office (email – cseeds@kdhe.state.ks.us), (fax 785.296.0086), (telephone 785.296.5517) or your KDHE local district office. Written notification required within 5 days of discovery.

KDHE Person Contacted: Cris Seeds Date: 6/11/2018 Time: 8:18am

3. Date Bypass Discovered: 6/9/2018 Time: 9:30am

4. Date Bypass Ended: 6/9/2018 Time: 1:00pm

5. Total Estimated Gallons Bypassed for All Locations on this Form: 50 gallons

6. If rainfall event, approximate inches of rainfall N/A

If multiple bypass locations listed below due to rain event, check here _____

7. Bypass Location (check all that apply): Bluntville Lift Station on Sylvan Trail

<input type="checkbox"/>	Plant	<input type="checkbox"/>	City Collection Line
<input checked="" type="checkbox"/>	Lift/Pump Station	<input type="checkbox"/>	Private Sewer Line
<input type="checkbox"/>	Peak Flow Basin	<input type="checkbox"/>	Other (specify below)
<input type="checkbox"/>	Manhole(s) (list manhole #'s below)		

All of the liquid was contained to the concrete driveway at the lift station.

8. Cause of Bypass: (definitions available at <http://www.kdheks.gov/water/tech.html>)

<input type="checkbox"/>	Intentional Bypass for Repair/Construction	<input checked="" type="checkbox"/>	Equipment Failure
<input type="checkbox"/>	Excessive Rainfall, Snow Melt	<input type="checkbox"/>	Control System Failure
<input type="checkbox"/>	Unplanned Construction Related Break	<input type="checkbox"/>	Power Related Failure
<input type="checkbox"/>	City Line Break (Not Construction Related)	<input type="checkbox"/>	Operations Related Failure
<input type="checkbox"/>	City Line Blockage	<input type="checkbox"/>	Maintenance Related Failure
<input type="checkbox"/>	Private Line Break	<input type="checkbox"/>	Vandalism
<input type="checkbox"/>	Private Line Blockage	<input type="checkbox"/>	Spill
<input type="checkbox"/>	Lagoon High Level	<input type="checkbox"/>	Other

Additional explanation of reason for bypass: (use additional page if necessary)
The pumps at the lift station failed and wastewater collected over time.

9. Corrective Action, if any: (use additional page if necessary)

The small amount of wastewater was remediated. The lead pump was repaired and operational, and a bypass pump was installed at the lift station for back up purposes.

Name: Andrew Turner Date: 6/11/2018

Title: Environmental, Health and Safety Specialist

When Completed, Mail to: Kansas Department of Health and Environment
Attn: Chris Seeds
1000 SW Jackson St., Suite 420
Topeka, KS 66612-1367

KANSAS DEPARTMENT OF HEALTH AND ENVIRONMENT
WASTEWATER INCIDENT REPORT FORM

Definitions are available at <http://www.kdheks.gov/water/tech.html>

Collection In-Plant In-Plant Spill
System Bypass Diversion Upset Flow Through

1. FACILITY NAME: USP LEAVENWORTH Kansas Permit # FMO12PO06
2. Within 24 hours of discovery, notify the KDHE Central Office (email – cseeds@kdheks.gov), (fax 785.296.0086), (telephone 785.296.5517) or your local KDHE district office. Written notification is required within 5 days of discovery. If the incident is not corrected within 5 days, send a written notification to KDHE indicating the status. This form is to be sent to KDHE when the incident ends.

IF THE INCIDENT IS AFTER HOURS AND REPRESENTS A SIGNIFICANT
PUBLIC HEALTH THREAT CALL 785.296.1679 IMMEDIATELY

KDHE Person Contacted: HELEN HOLME Date: 6/15/18 Time: 8:00 am

3. Date Incident Discovered: 6/15/2018 Time: 08:30 am
4. Date Incident Ended: 6/15/2018 Time: 08:45 am
5. Total estimated gallons bypassed, spilled, or routed through failed equipment for all locations on this form: 1,000 GALLONS
6. If rainfall induced event, approximate inches of rainfall _____
If multiple locations listed below due to rain event, check here

7. Incident Location: (check all that apply)
- | | |
|---|--|
| <input type="checkbox"/> Plant | <input type="checkbox"/> City Collection Line (Line Break / Joint) |
| <input checked="" type="checkbox"/> Lift/Pump Station | <input type="checkbox"/> Private Sewer Line |
| <input type="checkbox"/> Peak Flow Basin | <input type="checkbox"/> Basement |
| <input type="checkbox"/> Manhole(s) | <input type="checkbox"/> Other (specify below) |

Identify All Incident Locations by Name, Street Address or Manhole Number as appropriate.

LIFT STATION LOCATED ON 1300 METROPOLITAN AVE

8. Cause of Incident:
- | | |
|---|---|
| <input type="checkbox"/> Intentional Bypass for Repair/Construction | <input type="checkbox"/> Equipment Failure |
| <input type="checkbox"/> Excessive Rainfall, Snow Melt | <input type="checkbox"/> Control System Failure |
| <input type="checkbox"/> Unplanned Construction Related Break | <input checked="" type="checkbox"/> Power Related Failure |
| <input type="checkbox"/> City Line Break (Not Construction Related) | <input type="checkbox"/> Operations Related Failure |
| <input type="checkbox"/> City Line Blockage | <input type="checkbox"/> Maintenance Related Failure |
| <input type="checkbox"/> Private Line Break | <input type="checkbox"/> Vandalism |
| <input type="checkbox"/> Private Line Blockage | <input type="checkbox"/> Other |
| <input type="checkbox"/> Lagoon High Level | |

Additional explanation of reason for Incident: (use additional page if necessary)

Equipment Failure due to power outage that resulted from a tripped breaker.

9. Corrective Action, if any: (use additional page if necessary)
Power was restored and pumps working correctly

Name: BILLYE E CORDELL Date: 06/15/2018
Title: SAFETY MANAGER Phone: 913-578-1387

When Completed, E-mail to: cseeds@kdheks.gov

Kansas Department of Health & Environment – Attn: Chris Seeds
Or Mail to: 1000 SW Jackson St., Suite 420, Topeka, KS 66612-1367
Fax 785.296.0086

July 1, 2018

City of Leavenworth MAINTENANCE LINES

Evaluation: check manhole 0229.2 at 711 seneca
just check do not rod or dye

	LOCATION	UP/DOWN MH	FOOTAGE	DATE/TIME	FLUSH	ROD	CHECK	CREW	VEHICLE	REASON/PROBLEM
1	1320 S 4TH ST	0619-0627	374							Sags 112' from MH 4207
2	210 ELM ST.	0614-0613.1	620							MH 0613.1 collects debris
3	306 S. 3RD ST.	0195-0194	408							Severe sags
4	100 N. 5th St.	0228-0227	828							Sewer smell in city hall
5	401 DELAWARE ST.	0270-0269.1	391.5							Sags and Grease
6	914 BROADWAY ST	0065-0065.1	180							Sags and Grease
7	744 POTTAWATOMIE	0165.1-0166	1000							Clean downstream flat
8	8TH & POTTAWATOMIE	0167-0168	200							Sags and Grease
9	611 N. BROADWAY	0150.2-0150.1	55							Line is Flat
10	11TH & KIOWA	0125.1-0125	200							Severe sags
11	1500 PAWNEE ST.	1160-1635	501							Sag 28' East MH 1159
12	14TH & MIAMI	1291-1290	168							Sags
13	2049 MARJORIE CIR GRAND AVE &	1764-1763	144							Sever offset in joints and roots
14	IRONMOULDERS	0436-0436.1	159							Severe Sags
15	705 SCOTT ST	0521-0523	600							Roots
16	2109 S 4TH ST	0657.2-0657.1	20							Grease buildup
17	503 SPENCER PL	2437-2417-2416	475							Debris buildup in MH 2415
18	3917 LAKEVIEW DR	1981.2-1981	414.7							Light to medium grease
19	CODY PARK	1443-1404	114							Creek crossing roots
20	2019 s 3rd animal control	1895 - clean out	170'							Line flat collects debris.

City of Leavenworth

Summary of enrolments and claims for Service Line Warranties of America (Utility Service Partners) for reporting period of Jan 1 2018 to July 1, 2018



Building Peace of Mind.
One Community at a Time



Partner Reports

[Web Training Video](#)

[Partner Reporting Manual](#)

Coming soon!

Please select which report you would like to view by clicking the drop down arrow below.

Partner Summary

Begin Date (mm-dd-yyyy) 1/1/2018 12:00:00 AM

End Date (mm-dd-yyyy) 7/1/2018 12:00:00 AM

[View Report](#)

1 of 1 | Select a format | Export

PARTNER SUMMARY

PARTNER NAME	PRODUCT DESCRIPTION	BEGIN DATE	END DATE	ENROLLMENTS	CLAIMS FILED
Leavenworth, KS	External Sewer Line Warranty	Jan 01, 2018	Jul 01, 2018	0	9
	External Water Line Warranty	Jan 01, 2018	Jul 01, 2018	0	0
	In-Home Plumbing Warranty	Jan 01, 2018	Jul 01, 2018	0	1
Total For 1/1/2018 To 7/1/2018				0	10
TOTAL (To Current Day)				88	24

LEAVENWORTH - JANUARY 1, 2018 TO JUNE 30, 2018		
YTD - Grease Trap/Receptor Survey		
Businesses	Receiving letters	54
	Closed amount	0
	With grease traps (29) & Interceptors (23)	52
	Grease trap/interceptors not required	1
	With new installations	2
	Not yet inspected	1
	With required trap/interceptor not yet installed	1
Number of Site Inspections (Grease Traps		22
Number of Inspections Not Needed) Interceptor		24
Number of Maintenance Records Received (Interceptors)		11