

1. Due to the Missouri River flooding, the Wastewater Treatment Plant experienced higher than normal flows from March 21, 2019 until Monday, March 25, 2019. At 1:30 a.m. on March 23, the Aeration Basin could not contain the wastewater pumped and started to overflow the walls of this basin. This overflow continued until 1:30 a.m. on March 25. Water Pollution Control (WPC) estimated the rate of this overflow was 500 gallons per minute. An estimated 1.4 million gallons overflowed into the existing floodwaters during that time. WPC and the City of Leavenworth asked that citizens stay out of the floodwaters on 2nd Street until the water was back within the banks of 5-Mile Creek.
2. At 10:30 a.m. on April 8, 2019 WPC was informed that manhole number 0310.2 was overflowing at 320 Esplanade Street. Upon arrival, it was observed that the manhole had overflowed at an estimated rate of 25 gallons per minute and the water was running to the storm drain on the corner of Cherokee Street and Esplanade Street. This storm drain flows directly to the Missouri River. The overflowing manhole had stopped overflowing by 11:30 a.m. WPC estimated that 1,500 gallons flowed into the Missouri

There were five (5) SSO events that reached the Waters of the United States between January 1, 2019 and June 30, 2019. A summary of each event is below.

Paragraph 37. Attached is a listing of SSO "Transparency Report" notifications on the City of Leavenworth webpage at www.leavenworthks.org. These are related to SSO events that reached the Waters of the United States. Additional notifications of these events were made by the City Public Information Officer (PIO) via Social Media and on the City's webpage at www.leavenworthks.org.

Pursuant to Paragraphs 37 and 38 of the Order of Compliance on Consent, Docket No. CWA-07-2015-0022, the City of Leavenworth, Kansas is providing the following:

Ms. Sans:

RE: SSO Order of Compliance – Docket No. CWA-07-2015-0022
 Compliance Actions – City of Leavenworth
Timeframe: January 1, 2019 - June 30, 2019

Cynthia Sans
 U.S. Environmental Protection Agency – Region 7
 Water, Wetlands and Pesticides Division
 11201 Renner Boulevard
 Lenexa, KS 66219
sans.cynthia@epa.gov

July 25, 2019

Sent via e-mail



- **0** **USP Leavenworth (Bureau of Prisons) SSO Events** were reported to KDHE. It is unknown if USP Leavenworth had overflows that were not reported. (The City of it is inside the City limits.)
- **1** **Fort Leavenworth Event** was reported to KDHE by American Water. It is unknown if any of these events reached the Waters of the United States. A copy of the report is included. (The City of Leavenworth has no jurisdiction on Fort Leavenworth even though 16 events were not related to contractor actions
 - 0 events from contractor actions
 - 16 events were not related to contractor actions
- **11** **City-Line Events**. 5 reached the Waters of the United States.
 - 0 events from contractor actions
 - 16 events were not related to contractor actions
- **16** **Private-Line Events**. 0 reached the Waters of the United States.

28 SSO events occurred during this period and reported to KDHE. A report showing each event and resolution of the event is included with this letter.

(a.) The number of unauthorized discharges which occur within the City's POTW (Publicly-Owned Treatment Works) during the reporting period:

Paragraph 38. Describe actions taken by the City between January 1, 2019 and June 30, 2019 to comply with this order, and attach copies of all SSO reports submitted to KDHE.

A copy of the transparency reports related to these five (5) events is attached. Due to a City webpage update, the transparency reports only date back to January 2019 and forward. The transparency reports are available for viewing on the City webpage at www.leavenworthks.org.

5. Due to the heavy rain on 22 and 23 June 2019, the manhole at the intersection of Broadway and Cherokee Streets started to overflow on June 23 at 9:00 a.m. This overflow continued until 3:00 p.m. on that same day. WPC estimated that 6,000 gallons of water overflowed and washed into 3-Mile Creek.
 4. On May 21, 2019 at 4:04 p.m., the superintendent of the WPC sent a transparency report to the City's Public Information Officer that read, "Several manholes have overflowed due to the heavy rain today".
 3. On April 30, 2019 at 9:01 p.m., a citizen called stating that a manhole was overflowing in the area of 1415 Ottawa Street. WPC responded, jettied the line and the overflow was stopped at 10:30 p.m. Due to this overflow, wastewater reached a nearby creek at the above location. WPC placed a contaminated creek sign and obtained E-collar samples. Signs were removed when E-collar levels returned to and remained below the required levels.
- River through the storm drain. Since this storm drain is underground to the river and citizens do not have direct access, no restricted area was posted.

Leavenworth has no jurisdiction on USP Leavenworth even though it is inside the City limits.)

(b.) The specific measures taken by the City to correct and prevent recurrence of each unauthorized discharge which occurred within the City's POTW during the reporting period:

The City and residents have taken the actions as noted in the summary report related to Paragraph 38, section (a) above. In addition to those efforts, the following work occurred in the reporting period:

1. City continues to operate a CCTV crew. 4.2 miles were inspected during the reporting period for a total of 4.2 miles in 2019.

2. City continues to operate a cleaning and root elimination crew. 25.5 miles were cleaned during the reporting period for a total of 25.5 miles in 2019.

3. City inspected the results of root control operations performed in March 2018. No areas were identified for warranty work. A root control project was completed in the reporting period with 14,037 feet of sewer line being treated.

4. City continues to operate a grease trap inspection program. Letters are sent to selected relevant businesses monthly and all known owners are contacted at least one time each year to request copies of maintenance records. The City has identified 60 grease trap locations from both open and closed businesses. Physical inspections have been completed in 30 of the 60 grease trap installations during the reporting period. Five (5) new installations were completed and one business closed during the reporting period. Currently there are no known businesses that are noncompliant.

The City continues to review and look at updates for the Grease Trap Program. Recommendations for the creation of fees and enforcement actions in the form of fines and/or the disconnection of water or sewer service have been sent to the City Manager and City Attorney for review.

5. City has approved a design contract for the 2019 Sewer Inflow and Infiltration Project. Zero (0) contracts for creek crossing repairs were necessary. Seven (7) projects for manhole replacement or sewer line repairs totaling \$59,124.90 were awarded and completed during the reporting period.

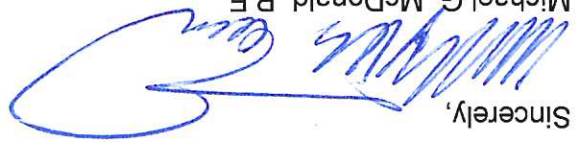
6. City efforts related to retention of employees have resulted in the following during the reporting period:

a. One (1) employee separated from WPC during the reporting period. One (1) new employee was hired, and one (1) employee was promoted. The department was fully staffed at the end of this reporting period.

- (c.) A copy of each unauthorized discharge report submitted to KDHE: Copies of 28 KDHE SSO reports are attached to this letter. This includes one (1) event on Fort Leavenworth.
13. The City evaluates all SSOs related to contractor actions. There were no SSOs related to contractor actions during the reporting period. The need for situational awareness has been stressed to City inspectors and the contractors involved with the SSOs.
 12. In early 2018, the City of Leavenworth and City of Lansing signed a Memorandum of Understanding related to use of City of Lansing facilities for disposing of solids from the Vector truck. The Memorandum of Understanding between the two cities remained in place through the first half of 2019.
 11. City Housing Trust Fund (HTF) resources may be used to assist homeowner private sewer line repair or water line repair up to a maximum cap of \$5,000 depending on income qualifications. There was one (1) HTF sewer line repair during the reporting period for a total of \$715.
 10. City Community Development Block Grant (CDBG) funds may be used to fund homeowner private sewer line repair or water line repair up to a maximum cap of \$5,000 depending on income qualifications. There were three (3) CDBG sewer line repairs during the reporting period using grants for a total of \$7,028.
 9. City has contracted with Service Line Warranties of America to provide an affordable repair option for all residential sewer lines (private lines). This optional program began in January 2017. Records indicate that four (4) customers registered for the sewer line warranty program during the reporting period of January 1, 2019 to June 30, 2019. The program currently has 348 residential structures under contract.
 8. The "Trouble Line" list continues to be investigated by City staff. These lines are subjected to additional routine cleaning or inspection on approximately a monthly basis due to previous situations. Twenty (20) lines remain on the "Trouble Line" list.
 7. Two cycles of creek-crossing inspections have occurred in the reporting period with zero (0) issues noted during this reporting period.
 - b. Training and education opportunities are available for all operators to include in-house, formal training, and three California correspondence courses. All KDHE-certified operators are current in their requirements.
 - Eleven (11) employees attended the simple CPR training
 - Sixteen (16) employees attended the Acuity Lighting training
 - One (1) employee attended the Leadership, Team-Building and Coaching Skills training
 - Two (2) employees attended the Operation of Wastewater Treatment Plants Volume II training
 - One (1) employee took the Truckers Against Trafficking Course
 - One (1) employee took the Wastewater Collections System training and passed

If you have any questions or need additional documentation, please don't hesitate to contact me at 913-684-0375 or by email at mmcdonald@firstcity.org.

Sincerely,



Michael G. McDonald, P.E.,

Director of Public Works

cc: Paul Kramer, City Manager

Jaime Gagero, Director, Bureau of Water, KDHE (sent via U.S. mail)

Brittany A. Barrientos, Attorney

Attachments

- Screenshots of on-line Transparency Report with details of the five (5) events
- Spreadsheet with summary of 28 SSO events with dates and corrective actions
- KDHE SSO reports (28 events)
- Listing of 20 "Trouble Lines" currently receiving enhanced maintenance
- Summary sheet from Service Line Warranties of America program.

EPA REPORT 2019

January 1 - June 30

Sanitary Sewer Overflows - 28

Transparency Reports - 5

Dukes Root Contract - 14,037 feet treated

Sanitary Lines Repaired by WPC - \$59,124.90

Lines Cleaned - 25.5 miles

Lines CCTV'd - 4.2 miles

Maintenance Line List - 20

Training/Promoted: (see attached)

Employees departed since January 1 - One

Employee hired since January 1 - One

Use of Inter-Local Agreement with Lansing - 6 times

TRANSPARENCY REPORT

Due to the Missouri River Flooding, the Waste Water Treatment Plant experienced higher than normal flows from March 21, 2019 until Monday March 25, 2019.

At 1:30 am on March 23, the Aeration Basin could not contain the wastewater pumped, and started to overflow the walls of this basin. This overflowed continued until 1:30 am on March 25th.

Water Pollution Control estimated the rate of this overflow was 500 gallons per minute. An estimated 1.4 million gallons overflowed into the existing flood waters during that time.

Water Pollution Control and the City of Leavenworth asked that citizens stay out of the flood waters on Second Street until the water is back with the bank of Five-mile creek.



PUBLIC WORKS

Sanitary Sewer Overflow Transparency Reports

TRASH AND RECYCLING	
BUILDING INSPECTIONS	+
STORMWATER PROJECTS	
STREET MAINTENANCE	+
BRUSH SITE	
WATER POLLUTION CONTROL	-
Sanitary Sewer Overflow Transparency Reports	


<https://www.leavenworthis.org/publicworks-transparency/>

Attachments

Aeration Basin Overflow at Water Pollution Control March 25-25

Sanitary Sewer Overflow reported near 1515 Ontario on April 30, 2019

Sanitary Sewer Overflow for June 23, 2019

 June 23, 2019 SSO

Share/Save through Social Media



CONTACT INFORMATION

24-hour sewer emergency

line: 913-682-1090

Public Works: 913-684-0375

Municipal Service Center: 913-

682-0650

Hours: 8 a.m. - 5 p.m.

Monday - Friday

Location: 100 N. Fifth St.,

Leavenworth, KS 66048

[View Full Contact Details](#)



View Edit Revisions Clone content

PUBLIC WORKS

TRASH AND RECYCLING	
BUILDING INSPECTIONS	+
STORMWATER PROJECTS	
STREET MAINTENANCE	+
BRUSH SITE	
WATER POLLUTION CONTROL	+
ENGINEERING	+

Aeration Basin overflow at the Water Pollution Control (Wastewater Treatment Plant) on March 23-25 due to the flooding of the Missouri River.

Due to the flooding of the Missouri River, the Wastewater Treatment Plant experienced higher than normal flows from Thursday, March 21, 2019 until Monday, March 25, 2019.

At 1:30 a.m. on March 23, the Aeration Basin could not contain the wastewater pumped, and started to overflow the walls of this basin. This overflowed continued until 1:30 a.m. on March 25.

Water Pollution Control estimated the rate of this overflow was 500 gallons per minute. An estimated 1.4 million gallons overflowed into the existing flood waters during that time.

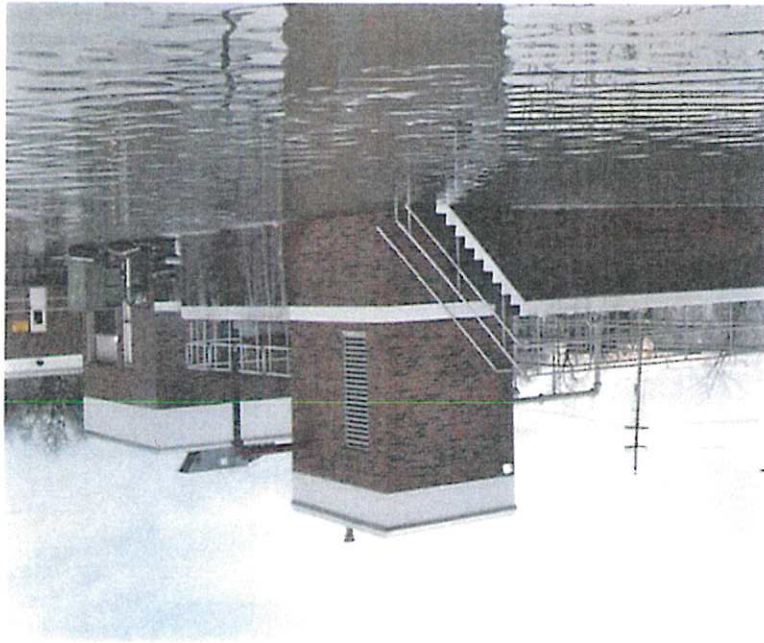
Water Pollution Control and the City of Leavenworth asked that citizens stay out of the flood waters on 2nd Street until the water was back with the bank of Five-Mile Creek. Due to the flood, 2nd Street had already been marked off with barricades.

[Click any thumbnail image to view a slideshow](#)





Aerial View of Wastewater Treatment Plant



Wastewater Treatment Plant - Leavenworth, KS
Aeration Basin
Missouri River Flood - March 23-25, 2019

TRANSPARENCY REPORT

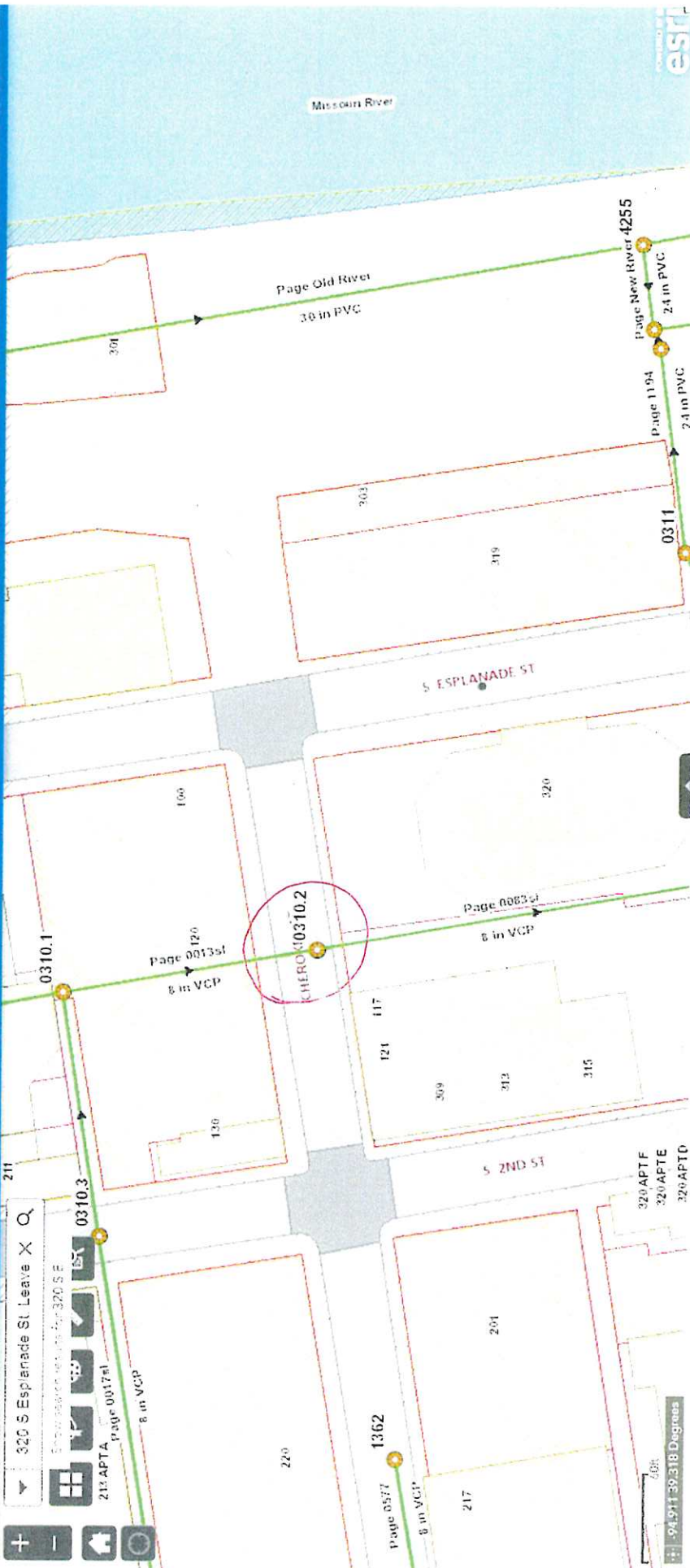
At 10:30 am on April 8, 2019 Water Pollution control was informed that manhole 0310.2 was overflowing at 320 Espanade Street.

Upon arrival, we noticed that the manhole was overflowing at an estimated rate of 25 gallons per minute and the water was running to the storm drain on the corner of Cherokee Street and Espanade Street. This storm drain flows directly to the Missouri River.

The overflowing manhole had stopped overflowing by 11:30 am. Water Pollution Control estimated that 1500 gallons flowed into the Missouri River through the storm drain.

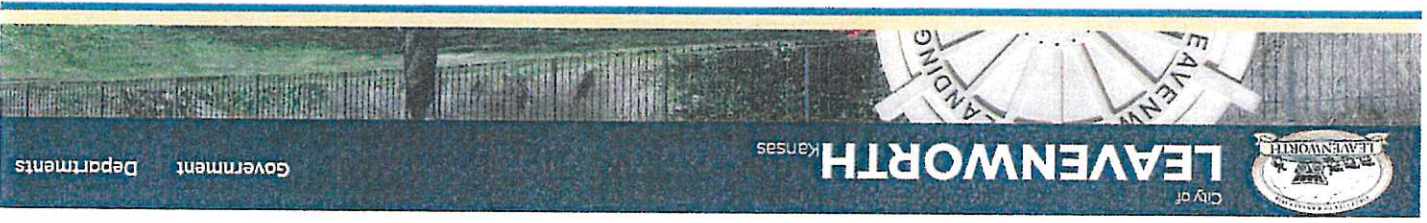
Since this storm drain is underground to the river and citizens do not have direct access, no restricted area will be posted.

Water Pollution would ask that if you have sanitary drains backing up or see water running from a sanitary sewer manhole to please call 913-682-1090 any time day or night.



TRANSPARENCY REPORT

On April 30, 2019 at 9:01 pm, a citizen called stating that a manhole was overflowing in the area of 1415 Ottawa Street. Water Pollution Control responded and jetted the line and the overflow was stopped at 10:30 pm. Due to this overflow wastewater reached a nearby creek at the above location. WPC has placed a contaminated creek signs out and have taken e-coli samples. Water Pollution Control ask the public to stay out of the creek east of 1415 Ottawa Street and North 13th Street between Ottawa and Osage Streets, until the creek signs are removed.



City of Leavenworth
 Kansas
 Government Departments

PUBLIC WORKS

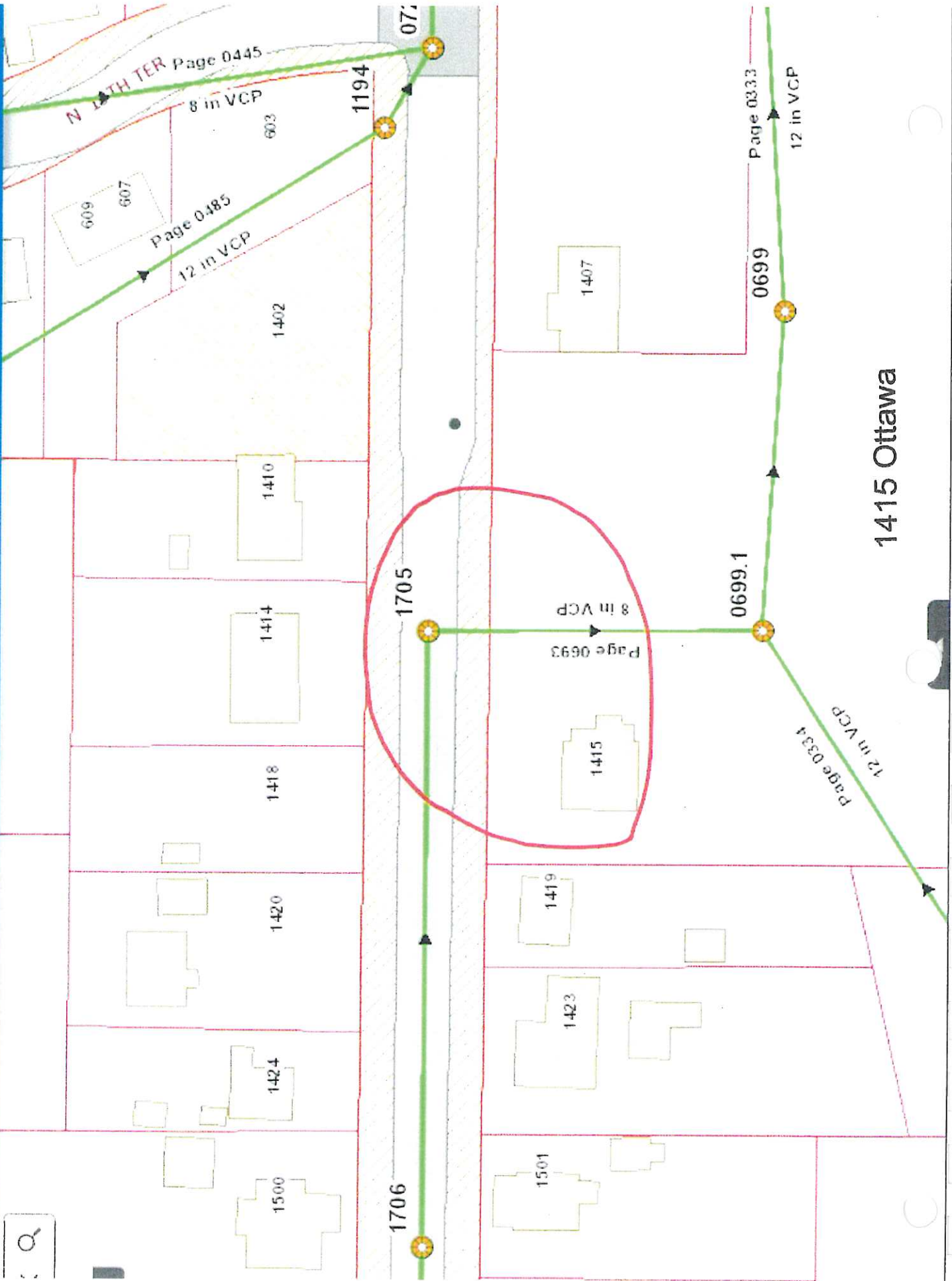
+	TRASH AND RECYCLING
+	BUILDING INSPECTIONS
	STORMWATER PROJECTS
+	STREET MAINTENANCE
	BRUSH SITE
+	WATER POLLUTION CONTROL
+	ENGINEERING

Sanitary Sewer Overflow reported near 1415 Ottawa on April 30, 2019

At 8:01 pm, April 30, 2019, a citizen called stating that a manhole was overflowing in the area of 1415 Ottawa St. Water Pollution Control responded, jettied the line and stopped the overflow at 10:30 pm. Because of this overflow, wastewater reached a nearby creek at the above location. Water Pollution Control have placed "contaminated creek" signs out. Samples were taken to test for E.coli. Water Pollution Control asks the public to stay out of the creek east of 1415 Ottawa St.



Share/Save through Social Media



Chuck Staples

From: Chuck Staples <cstaples@firstcity.org>
Sent: Tuesday, May 21, 2019 4:04 PM
To: Melissa Bower
Subject: Transparency Report

Several manholes have overflowed due to the heavy rain today. Citizens should stay out of the running water and all creeks for the next few days.
Sent from my T-Mobile 4G LTE device

TRANSPARENCY REPORT

Due to the heavy rain on 22nd and 23rd of June, the manhole at the intersection at Broadway Street and Cherokee Street started to overflow on June 23 at 9:00 am. This overflow continued until 3:00 pm on that same day.

Water Pollution Control estimates that 6000 gallons of water overflowed and washed into 3-mile creek.

The City and Water Pollution Control would like to remind citizens to stay out of water running out of manholes and to stay out of 3-mile creek for a few days.

PUBLIC WORKS

- TRASH AND RECYCLING
- BUILDING INSPECTIONS +
- STORMWATER PROJECTS
- STREET MAINTENANCE +
- BRUSH SITE
- WATER POLLUTION CONTROL -
- Sanitary Sewer Overflow Transparency Reports
- Sanitary Sewer Overflow Transparency Reports 2017
- Sanitary Sewer Overflow Transparency Reports 2018

Sanitary Sewer Overflow for June 23, 2019

June 24, 2019

Because of heavy rain June 22-23 a manhole at the intersection of Broadway and Cherokee streets overflowed from 8 am to 3 pm. June 23 Water Pollution Control estimates 4000 gallons of water overflowed and washed into Three Mile Creek.

The City and Water Pollution Control would like to remind citizens to stay out of water coming from manholes, and to stay out of the Three Mile Creek area for a few days.

Supporting Documents

1 June 23 2019 SSO (1 MB)

Share/Save through Social Media





From Broadway & Cherokee St. to the Street Bridge

**January 1, 2019 to June 30, 2019
SSO SUMMARY**

Date	Address	Nature of Problem	SSO Problem	Transparency Report	Cause	Solution
1/7/2019	1925 Westwood	plumber called backup in basement	Y PLT	no	private line trouble	JF Denney had line open when crew arrived on scene
1/2/2019	712 Grand Ave	sewage out of cleantout	Y PLT	no	private line blocked	JF Denney cleaned private line
1/10/2019	1026 Osage St	clean out backing up into house	Y PLT	no	cleantout holding water	Homeowner had line cleaned
1/11/2019	906 Parkway Ct.	sewage backing up and spilling into street.	Y CLT	no	blockage in city line	cleaned line pulled 2-liter bottle out of line
1/20/2019	FT Leavenworth	Manhole overflowing	Y ftiv	no	blocked by grease and rags	removed grease and rags
1/28/2019	select lift station	pumps not pumping	Y LS	no	pumps plugged with rags	removed rags talked to cca and they got their grinder pump fixed
2/18/2019	Select Lift Station	rags in pumps	Y LS	no	high wet well alarm	removed rags from pumps (CCA grinder pump still out)
2/14/2019	922 Dakota St.	sewage running down street	Y PLT	no	private line blocked	Homeowner had line cleaned
2/7/2019	2006 Miami St.	water in basement from floor drain	Y CLT	no	Roots in line	cleaned line to remove roots
3/28/2019	804 S 3rd St.	backing up in basement	Y CLT	no	blockage in city line	cleaned line with Vac truck
3/23/2019	1800 S 2nd St	Aeration basin overflowing	Y CLT	yes	overflowing from high flows	flows high due to flooding
3/8/2019	1328 6th Ave	soil seems to have seeping water	Y PLT	no	leaking from cleantout	Homeowner had line cleaned by McCann Plumbing
3/9/2019	1602 Westwood	sewer backup	Y CLT	no	roots blocking line	cleaned roots from line
4/30/2019	1415 Ottawa	sewer running into creek behind his house	Y CLT	yes	blockage in city line	cleaned line with Vac truck
4/29/2019	708 Grand Ave.	water running down street	Y PLT	no	private line blocked	Homeowner had JF Denney clear line
4/13/2019	1515 Newman St.	water backing up in drain	Y PLT	no	private line blocked	water receded
4/11/2019	2014 Seneca St.	Basement drains and restrooms backing up	Y PLT	no	private line blocked	plumber cleared line
4/8/2019	320 Esplanade St.	restroom toilets are backing up also manhole overflowing	Y CLT	yes	city line has grease	used Vac truck to remove grease
4/8/2019	716 Grand Ave.	debris on ground from clean out	Y PLT	no	private line blocked	Got plumber to clear out line.
4/11/2019	1511 Newman St.	Crawl space flooded	Y PLT	no	pipes broken under house	Homeowner had line repaired
5/21/2019	city of Leavenworth	manholes overflowing due to heavy rain	Y cit	yes	Lines surcharged due to heavy rain.	crews monitored and cleaned mains
5/15/2019	712 Grand Ave	overflow from clean out	Y PLT	no	private line blocked	JF Denney cleaned private line
5/13/2019	1020 Miami St.	overflow from clean out	Y PLT	no	private line blocked	cleared by plumber
5/13/2019	1119 N. 8th St.	overflow from clean out	Y PLT	no	private line blocked	Homeowner got line cleared
6/23/2019	420 Elm St.	Main line is backed up making everthin back up	Y PLT	no	private line blocked	Homeowner got line cleared
6/23/2019	Broadway & Cherokee	Manhole overflowing	Y CLT	yes	Lines surcharged due to heavy rain.	Crews monitored main
6/16/2019	605 S 10th St.	Sewer backing up	Y PLT	no	Private line blockage	Homeowner got line cleared
6/4/2019	5151 S 4th St.	while doing locate noticed water coming up through ground	Y cit	no	Force main Leaking	Forced main repaired by contractor

**KANSAS DEPARTMENT OF HEALTH AND ENVIRONMENT
WASTEWATER INCIDENT REPORT FORM**

Definitions are available at <http://www.kdheks.gov/water/tech.html>

Collection In-Plant In-Plant
System Bypass Diversion Upset Flow Through Spill

1. FACILITY NAME: City of Leavenworth Kansas Permit # M-M012-1001

2. Within 24 hours of discovery, notify the KDHE Central Office (email - cseeds@kdheks.gov), (fax 785.296.0086), (telephone 785.296.5517) or your local KDHE district office. Written notification is required within 5 days of discovery. If the incident is not corrected within 5 days, send a written notification to KDHE indicating the status. This form is to be sent to KDHE when the incident ends.

KDHE Person Contacted: Chris Seeds Date: 1/3/19 Time: 7:11 AM

3. Date Incident Discovered: 1/2/2019 Time: 12:15 PM
4. Date Incident Ended: 1/2/2019 Time: 4:30 PM

5. Total estimated gallons bypassed, spilled, or routed through failed equipment for all locations on this form: 5 GALLONS

6. If rainfall induced event, approximate inches of rainfall: n/a

7. Incident Location: (check all that apply) If multiple locations listed below due to rain event, check here

Plant City Collection Line (Line Break / Joint) Private Sewer Line Basement Other (specify below)

Identify **All** Incident Locations by Name, Street Address or Manhole Number as appropriate. We were called by a local plumber stating that they were working a overflow at 712 Grand. This is a private line. The upstream manhole is 0381 and the downstream manhole is 0380.

8. Cause of Incident:

- Intentional Bypass for Repair/Construction
- Excessive Rainfall, Snow Melt
- Unplanned Construction Related Break
- City Line Break (Not Construction Related)
- City Line Blockage
- Private Line Break
- Private Line Blockage
- Lagoon High Level
- Equipment Failure
- Control System Failure
- Power Related Failure
- Operations Related Failure
- Maintenance Related Failure
- Vandalism
- Other

Additional explanation of reason for incident: (use additional page if necessary) Since the plumber had informed us the is was the lateral that was blocked we responded to clean up the overflow at the clean out.

9. Corrective Action, if any: (use additional page if necessary) Our crew vacated up the overflow and placed some containment socks around the clean out. J.F. Denney call around 4:30 pm stating the line was open.

Name: Chuck Staples Date: 1/03/19
Title: Superintendent Phone: 913-682-1090

When Completed, E-mail to: cseeds@kdheks.gov Kansas Department of Health & Environment - Attn: Chris Seeds

Or Mail to: 1000 SW Jackson St., Suite 420, Topeka, KS 66612-1367
Fax 785.296.0086

REV 20120906

**KANSAS DEPARTMENT OF HEALTH AND ENVIRONMENT
WASTEWATER INCIDENT REPORT FORM**

Definitions are available at <http://www.kdheks.gov/water/tech.html>

Collection In-Plant In-Plant Upset Diversion System Bypass Spill

1. FACILITY NAME: City of Leavenworth Kansas Permit # M-M012-1001

2. Within 24 hours of discovery, notify the KDHE Central Office (email – cseeds@kdheks.gov), (fax 785.296.0086), (telephone 785.296.5517) or your local KDHE district office. Written notification is required within 5 days of discovery. If the incident is not corrected within 5 days, send a written notification to KDHE indicating the status. This form is to be sent to KDHE when the incident ends.

KDHE Person Contacted: Chris Seeds Date: 1/8/19 Time: 7:50 am

3. Date Incident Discovered: 1/7/2019 Time: 12:50 pm

4. Date Incident Ended: 1/7/2019 Time: 12:30 pm

5. Total estimated gallons bypassed, spilled, or routed through failed equipment for all locations on this form: 10 gallon

6. If rainfall induced event, approximate inches of rainfall: n/a

7. Incident Location: (check all that apply) If multiple locations listed below due to rain event, check here

- Plant
- Lift/Pump Station
- Peak Flow Basin
- Manhole(s)
- City Collection Line (Line Break / Joint)
- Private Sewer Line
- Basement
- Other (specify below)

Identify All Incident Locations by Name, Street Address or Manhole Number as appropriate. Kyle from J.F. Denney called stating they worked and plugged lateral at 1925 Westwood Street. The upstream manhole is 1119 and the downstream manhole is 1118.

8. Cause of Incident:

- Intentional Bypass for Repair/Construction
- Excessive Rainfall, Snow Melt
- Unplanned Construction Related Break
- City Line Break (Not Construction Related)
- City Line Blockage
- Private Line Break
- Private Line Blockage
- Lagoon High Level
- Equipment Failure
- Control System Failure
- Power Related Failure
- Operations Related Failure
- Maintenance Related Failure
- Vandalism
- Other

Additional explanation of reason for incident: (use additional page if necessary) The lateral at the address was blocked and the Plumber had just got is opened before we arrived. The line was opened at 12:30 and we were not called until 12:50 pm.

9. Corrective Action, if any: (use additional page if necessary) Our crew had trouble rodding this line because it's a outside drop that had broken off into the manhole. We on site this morning to see if a repair is needed.

Name: Chuck Staples Date: 1/09/18
Title: Superintendent Phone: 913-682-1090

When Completed, E-mail to: cseeds@kdheks.gov Kansas Department of Health & Environment – Attn: Chris Seeds



Or Mail to: 1000 SW Jackson St., Suite 420, Topeka, KS 66612-1367
Fax 785.296.0086

REV 20120906

**KANSAS DEPARTMENT OF HEALTH AND ENVIRONMENT
WASTEWATER INCIDENT REPORT FORM**

Definitions are available at <http://www.kdheks.gov/water/tech.html>

Collection In-Plant In-Plant
 System Bypass Diversion Upset Flow Through Spill

1. FACILITY NAME: City of Leavenworth Kansas Permit # M-M012-1001

2. Within 24 hours of discovery, notify the KDHE Central Office (email - cseeds@kdheks.gov), (fax 785.296.0086), (telephone 785.296.5517) or your local KDHE district office. Written notification is required within 5 days of discovery. If the incident is not corrected within 5 days, send a written notification to KDHE indicating the status. This form is to be sent to KDHE when the incident ends.

KDHE Person Contacted: Chris Seeds Date: 1/11/19 Time: 1:12 pm

3. Date Incident Discovered: 1/11/2009 Time: 10:15 am

4. Date Incident Ended: 1/11/2019 Time: 11:20 am

5. Total estimated gallons bypassed, spilled, or routed through failed equipment for all locations on this form: 15 gallons contained in basement

6. If rainfall induced event, approximate inches of rainfall n/a

If multiple locations listed below due to rain event, check here

7. Incident Location: (check all that apply)

Plant Lift/Pump Station Peak Flow Basin Manhole(s)
 City Collection Line (Line Break / Joint) Private Sewer Line Basement Other (specify below)

Identify All Incident Locations by Name, Street Address or Manhole Number as appropriate. Mrs. Ripley called stating that she had water backing up in their basement and a plumber was on site at 906 Parkway Court. The upstream manhole is 3110 and the downstream manhole is 3100.

8. Cause of Incident:

Intentional Bypass for Repair/Construction Excessive Rainfall, Snow Melt Unplanned Construction Related Break City Line Break (Not Construction Related) City Line Blockage Private Line Break Private Line Blockage Lagoon High Level
 Equipment Failure Control System Failure Power Related Failure Operations Related Failure Maintenance Related Failure Vandalism Other

Additional explanation of reason for incident: (use additional page if necessary)
 Upon arrival both manhole 3110 and 3100 were holding water. We rodde from manhole 3111 for 168 feet and then the water started to go down. This is a City line issue and we will return to ccty this line.

9. Corrective Action, if any: (use additional page if necessary)
 Once the line was draining I talked to the owner and the water started to go down in the basement.

Name: Chuck Staples Date: 1/11/19

Title: Superintendent Phone: 913-682-1090

When Completed, E-mail to: cseeds@kdheks.gov

Kansas Department of Health & Environment - Attn: Chris Seeds
 Or Mail to: 1000 SW Jackson St., Suite 420, Topeka, KS 66612-1367

**KANSAS DEPARTMENT OF HEALTH AND ENVIRONMENT
WASTEWATER INCIDENT REPORT FORM**

Definitions are available at <http://www.kdheks.gov/water/tech.html>

System Bypass In-Plant Collection In-Plant Diversion Upset Flow Through Spill

1. FACILITY NAME: City of Leavenworth Kansas Permit # M-M012-1001

2. Within 24 hours of discovery, notify the KDHE Central Office (email - cseeds@kdheks.gov), (fax 785.296.0086), (telephone 785.296.5517) or your local KDHE district office. Written notification is required within 5 days of discovery. If the incident is not corrected within 5 days, send a written notification to KDHE indicating the status. This form is to be sent to KDHE when the incident ends.

KDHE Person Contacted: Chris Seeds Date: 1/15/19 Time: 8:13 am

3. Date Incident Discovered: 1/10/2019 Time: 1:25 pm

4. Date Incident Ended: 1/14/2019 Time: 3:00pm

5. Total estimated gallons bypassed, spilled, or routed through failed equipment for all locations on this form: 5 gallons

6. If rainfall induced event, approximate inches of rainfall: n/a

7. Incident Location: (check all that apply) If multiple locations listed below due to rain event, check here

- Plant
- Lift/Pump Station
- Peak Flow Basin
- Manhole(s)
- City Collection Line (Line Break / Joint)
- Private Sewer Line
- Basement
- Other (specify below)

Identify All Incident Locations by Name, Street Address or Manhole Number as appropriate. Mr. Williams called stating that water was backing up in the house at 1026 Osage st. The upstream manhole is 0703 and the downstream manhole is 0178.

8. Cause of Incident:

- Intentional Bypass for Repair/Construction
- Excessive Rainfall, Snow Melt
- Unplanned Construction Related Break
- City Line Break (Not Construction Related)
- City Line Blockage
- Private Line Break
- Private Line Blockage
- Lagoon High Level
- Equipment Failure
- Control System Failure
- Power Related Failure
- Operations Related Failure
- Maintenance Related Failure
- Vandalism
- Other

Additional explanation of reason for incident: (use additional page if necessary) Upon arrival we checked the up and downstream manhole and had good flow. We rodde 175 feet with no problems. We did notice the clean out was holding water. We informed the owner that he needed to call a plumber. This is a private line issue.

9. Corrective Action, if any: (use additional page if necessary) We placed containment socks around the clean out and spread some lime on the ground. We turned this call over to our inspection team and they called me yesterday around 3:15 letting me know the line was open.

Name: Chuck Staples Date: 1/15/19
Title: Superintendent Phone: 913-682-1090

When Completed, E-mail to: cseeds@kdhks.gov
Kansas Department of Health & Environment – Attn: Chris Seeds
Or Mail to: 1000 SW Jackson St., Suite 420, Topeka, KS 66612-1367
Fax 785.296.0086

**KANSAS DEPARTMENT OF HEALTH AND ENVIRONMENT
WASTEWATER INCIDENT REPORT FORM**

Information are available at <http://www.kdheks.gov/water/tech.html>

Collection In-Plant In-Plant Spill

1. FACILITY NAME: Fort Leavenworth Kansas Permit # M-MO12-01

2. Within 24 hours of discovery, notify the KDHE Central Office (email - chris.seeds@ks.gov), (fax 785.559.4257), (telephone 785.296.5517) or your local KDHE district office. Written notification is required within 5 days of discovery. If the incident is not corrected within 5 days, send a written notification to KDHE indicating the status. This form is to be sent to KDHE when the incident ends.
IF THE INCIDENT IS AFTER HOURS AND REPRESENTS A SIGNIFICANT PUBLIC HEALTH THREAT CALL 785.296.1679 IMMEDIATELY

KDHE Person Contacted: Ms. Seeds / EIC Date: 1/20/19 Time: 1725 hrs

3. Date Incident Discovered: 1/20/2019 Time: 1200 hrs

4. Date Incident Ended: 1/20/2019 Time: 2215 hrs

5. Total estimated gallons bypassed, spilled, or routed through failed equipment for all locations on this form: 1500-2500 gals

6. If rainfall induced event, approximate inches of rainfall: N/A

7. Incident Location: (check all that apply) If multiple locations listed below due to rain event, check here

- Plant
- Lift/Pump Station
- Peak Flow Basin
- Manhole(s)
- City Collection Line (Line Break / Joint)
- Private Sewer Line
- Basement
- Other (specify below)

Identify All Incident Locations by Name, Street Address or Manhole Number as appropriate. The manhole is in timber abutting a drainage ditch on the Southside of the base. The flow went to ditch.

8. Cause of Incident:

- Intentional Bypass for Repair/Construction
- Excessive Rainfall, Snow Melt
- Unplanned Construction Related Break
- City Line Break (Not Construction Related)
- City Line Blockage
- Private Line Break
- Private Line Blockage
- Lagoon High Level
- Equipment Failure
- Control System Failure
- Power Related Failure
- Operations Related Failure
- Maintenance Related Failure
- Vandalism
- Other

Additional explanation of reason for incident: (use additional page if necessary)
Grease and disposable cleaning rags. The ditch is approx 1 1/2 m from the river on base.

9. Corrective Action, if any: (use additional page if necessary)
Cleaned solid and spread lime over the area. ditch up/down stream is frozen. Cleanup was delayed due to equipment breakdown and contractor truck froze in extreme low temperatures

Name: Ed Winton

Title: General Manager

Phone: 913-680-7894

Date: 21 JAN 19

When Completed, E-mail to: chris.seeds@ks.gov

Kansas Department of Health & Environment - Attn: Chris Seeds
Or Mail to: 1000 SW Jackson St., Suite 420, Topeka, KS 66612-1367
Fax 785.559.4257

*Fort Leavenworth
Rec'd 1-28-19*

**KANSAS DEPARTMENT OF HEALTH AND ENVIRONMENT
WASTEWATER INCIDENT REPORT FORM**

Conditions are available at <http://www.kdheks.gov/water/tech.html>

System Bypass In-Plant In-Plant Diversion Upset Flow Through Spill

1. FACILITY NAME: City of Leavenworth Kansas Permit # M-M012-1001

2. Within 24 hours of discovery, notify the KDHE Central Office (email - cseeds@kdheks.gov), (fax 785.296.0086), (telephone 785.296.5517) or your local KDHE district office. Written notification is required within 5 days of discovery. If the incident is not corrected within 5 days, send a written notification to KDHE indicating the status. This form is to be sent to KDHE when the incident ends.

KDHE Person Contacted: Chris Seeds Date: 1/30/19 Time: 9:18 am

3. Date Incident Discovered: 1/28/2019 Time: 8:30 am

4. Date Incident Ended: 1/28/2019 Time: 2:30 pm

5. Total estimated gallons bypassed, spilled, or routed through failed equipment for all locations on this form: 200-300 gallons

6. If rainfall induced event, approximate inches of rainfall: n/a

7. Incident Location: (check all that apply) Plant Lift/Pump Station Peak Flow Basin Manhole(s) City Collection Line (Line Break / Joint) Private Sewer Line Basement Other (specify below)

Identify All Incident Locations by Name, Street Address or Manhole Number as appropriate. Upon arrival performing our bi-weekly checks we noticed the pumps were not pumping. This is Select Lift Station.

8. Cause of Incident: Intentional Bypass for Repair/Construction Excessive Rainfall, Snow Melt Unplanned Construction Related Break City Line Break (Not Construction Related) City Line Blockage Private Line Break Private Line Blockage Lagoon High Level Equipment Failure Control System Failure Power Related Failure Operations Related Failure Maintenance Related Failure Vandalism Other

Additional explanation of reason for incident: (use additional page if necessary) The east lift station pumped was pulled and large amount of debris was cleaned out and the pump reinstalled. The pump stated of pump down.

9. Corrective Action, if any: (use additional page if necessary) We cleaned out the east pump and then pulled the west pump and cleaned the line out. This is a cause of Core Civic's chopper pump being down for maintenance.

Name: Chuck Staples Date: 1/30/19

Title: Superintendent Phone: 913-682-1090

When Completed, E-mail to: cseeds@kdheks.gov Kansas Department of Health & Environment - Attn: Chris Seeds

**KANSAS DEPARTMENT OF HEALTH AND ENVIRONMENT
WASTEWATER INCIDENT REPORT FORM**

Definitions are available at <http://www.kdheks.gov/water/tech.html>

1. FACILITY NAME: System Bypass In-Plant In-Plant Diversion Upset Flow Through Spill

2. Within 24 hours of discovery, notify the KDHE Central Office (email - cseeds@kdheks.gov), (fax 785.296.0086), (telephone 785.296.5517) or your local KDHE district office. Written notification is required within 5 days of discovery. If the incident is not corrected within 5 days, send a written notification to KDHE indicating the status. This form is to be sent to KDHE when the incident ends.

KDHE Person Contacted: Chris Seeds Date: 2/7/19 Time: 11:32 am

3. Date Incident Discovered: 2/7/2019 Time: 10:11 am

4. Date Incident Ended: 2/7/2019 Time: 10:46 am

5. Total estimated gallons bypassed, spilled, or routed through failed equipment for all locations on this form: 25 gallon (contained in garage)

6. If rainfall induced event, approximate inches of rainfall n/a

7. Incident Location: (check all that apply) If multiple locations listed below due to rain event, check here

Identify All Incident Locations by Name, Street Address or Manhole Number as appropriate. Ken Haverkamp called stating that he had clear water backing up in his garage at 2006 Miami Street. The upstream manhole is 1647 and the downstream is 1147.

Plant
 Lift/Pump Station
 Peak Flow Basin
 Manhole(s)
 City Collection Line (Line Break / Joint)
 Private Sewer Line
 Basement
 Other (specify below)

8. Cause of Incident:

Intentional Bypass for Repair/Construction
 Excessive Rainfall, Snow Melt
 Unplanned Construction Related Break
 City Line Break (Not Construction Related)
 City Line Blockage
 Private Line Break
 Private Line Blockage
 Lagoon High Level
 Equipment Failure
 Control System Failure
 Power Related Failure
 Operations Related Failure
 Maintenance Related Failure
 Vandalism
 Other

9. Corrective Action, if any: (use additional page if necessary)

Our crew rodded the line without a problem but the water in the basement did go down when the rodder was pulled out. For now this is a Private line issue due to roots in the lateral.

Additional explanation of reason for incident: (use additional page if necessary)

We need to ccty this line to determine the cause. Upon arrival there was flow and no standing water in the manholes. We root treated this line in 2017.

Name: Chuck Staples
 Title: Superintendent
 Date: 2/07/19
 Phone: 913-682-1090

When Completed, E-mail to: cseeds@kdheks.gov
 Kansas Department of Health & Environment - Attn: Chris Seeds

**KANSAS DEPARTMENT OF HEALTH AND ENVIRONMENT
WASTEWATER INCIDENT REPORT FORM**

Definitions are available at <http://www.kdheks.gov/water/tech.html>

Collection System Bypass In-Plant Diversion In-Plant Upset In-Plant Flow Through Spill

1. FACILITY NAME: City of Leavenworth Kansas Permit # M-M012-1001

2. Within 24 hours of discovery, notify the KDHE Central Office (email - cseeds@kdheks.gov), (fax 785.296.0086), (telephone 785.296.5517) or your local KDHE district office. Written notification is required within 5 days of discovery. If the incident is not corrected within 5 days, send a written notification to KDHE indicating the status. This form is to be sent to KDHE when the incident ends.

KDHE Person Contacted: Chris Seeds Date: 2/15/19 Time: 8:04 am

3. Date Incident Discovered: 2/14/2019 Time: 8:25 am

4. Date Incident Ended: 2/14/2019 Time: 6:00 pm

5. Total estimated gallons bypassed, spilled, or routed through failed equipment for all locations on this form: 15 gallons

6. If rainfall induced event, approximate inches of rainfall n/a

If multiple locations listed below due to rain event, check here

7. Incident Location: (check all that apply)

- Plant
- Lift/Pump Station
- Peak Flow Basin
- Manhole(s)
- City Collection Line (Line Break / Joint)
- Private Sewer Line
- Basement
- Other (specify below)

Identify All Incident Locations by Name, Street Address or Manhole Number as appropriate. Leavenworth water department called stating that water was running down the street at 922 Dakota St. The upstream manhole is 0021.4 and the downstream manhole is 0021.3. This is a private line issue.

8. Cause of Incident:

- Intentional Bypass for Repair/Construction
- Excessive Rainfall, Snow Melt
- Unplanned Construction Related Break
- City Line Break (Not Construction Related)
- City Line Blockage
- Private Line Break
- Private Line Blockage
- Lagoon High Level
- Equipment Failure
- Control System Failure
- Power Related Failure
- Operations Related Failure
- Maintenance Related Failure
- Vandalism
- Other

Additional explanation of reason for incident: (use additional page if necessary)

Our crew arrived and noticed the clean out was overflowing and we started to vactor up the water. We also checked the manholes and we had good flow.

9. Corrective Action, if any: (use additional page if necessary)

We talked to the owner and informed them that they needed to call a plumber. They said they would and this morning we were notified that this line was opened around 6:00 pm last night.

Name: Chuck Staples

Date: 2/15/2019

Title: Superintendent

Phone: 913-682-1090

When Completed, E-mail to: cseeds@kdheks.gov Kansas Department of Health & Environment - Attn: Chris Seeds

Or Mail to: 1000 SW Jackson St., Suite 420, Topeka , KS 66612-1367
Fax 785.296.0086

REV 20120906

**KANSAS DEPARTMENT OF HEALTH AND ENVIRONMENT
WASTEWATER INCIDENT REPORT FORM**

Definitions are available at <http://www.kdheks.gov/water/tech.html>

Collection In-Plant In-Plant
 System Bypass Diversion Upset Flow Through Spill

1. FACILITY NAME: City of Leavenworth Kansas Permit # M-M012-1001

2. Within 24 hours of discovery, notify the KDHE Central Office (email - cseeds@kdheks.gov), (fax 785.296.0086), (telephone 785.296.5517) or your local KDHE district office. Written notification is required within 5 days of discovery. If the incident is not corrected within 5 days, send a written notification to KDHE indicating the status. This form is to be sent to KDHE when the incident ends.

KDHE Person Contacted: Chris Seeds Date: 2/19/19 Time: 9:14 am

3. Date Incident Discovered: 2/18/2019 Time: 11:04 am

4. Date Incident Ended: 2/18/2019 Time: 12:15 pm

5. Total estimated gallons bypassed, spilled, or routed through failed equipment for all locations on this form: 300-400 gallons

6. If rainfall induced event, approximate inches of rainfall: n/a

7. If multiple locations listed below due to rain event, check here

Incident Location: (check all that apply)
 Plant
 Lift/Pump Station
 Peak Flow Basin
 Manhole(s)
 City Collection Line (Line Break / Joint)
 Private Sewer Line
 Basement
 Other (specify below)

Identify All Incident Locations by Name, Street Address or Manhole Number as appropriate. We were called due to High water at Select Lift Station at 4808 Brewer Place.

8. Cause of Incident:

- Intentional Bypass for Repair/Construction
- Excessive Rainfall, Snow Melt
- Unplanned Construction Related Break
- City Line Break (Not Construction Related)
- City Line Blockage
- Private Line Break
- Private Line Blockage
- Lagoon High Level
- Equipment Failure
- Control System Failure
- Power Related Failure
- Operations Related Failure
- Maintenance Related Failure
- Vandalism
- Other

Additional explanation of reason for incident: (use additional page if necessary)
 This lift station is located next to a Federal Holding facility and they have a history of having no staff on the weekend to check their chopper pump.

9. Corrective Action, if any: (use additional page if necessary)
 Upon arrival the lift station pumps were running and the level was holding at 7.3 feet. Our crew back flushed both pumps until both pumps were pump the level back down to normal. I have contacted Core Civic and asked them to call me.

Name: Chuck Staples Date: 2/19/19
 Title: Superintendent Phone: 913-682-1090

When Completed, E-mail to: cseeds@kdheks.gov Kansas Department of Health & Environment - Attn: Chris Seeds

Or Mail to: 1000 SW Jackson St., Suite 420, Topeka, KS 66612-1367
Fax 785.296.0086

REV 20120906

**KANSAS DEPARTMENT OF HEALTH AND ENVIRONMENT
WASTEWATER INCIDENT REPORT FORM**

Definitions are available at <http://www.kdheks.gov/water/tech.html>

Collection System Bypass In-Plant Upset In-Plant Flow Through Spill

1. FACILITY NAME: City of Leavenworth Kansas Permit # M-M012-1001
 2. Within 24 hours of discovery, notify the KDHE Central Office (email - cseeds@kdheks.gov), (fax 785.296.0086), (telephone 785.296.5517) or your local KDHE district office. Written notification is required within 5 days of discovery. If the incident is not corrected within 5 days, send a written notification to KDHE indicating the status. This form is to be sent to KDHE when the incident ends.

KDHE Person Contacted: Chris Seeds Date: 3/11/19 Time: 99:20 AM

3. Date Incident Discovered: 3/8/2019 Time: 11:21 AM

4. Date Incident Ended: 3/8/2019 Time: 4:00 PM

5. Total estimated gallons bypassed, spilled, or routed through failed equipment for all locations on this form: 10 GALLONS

6. If rainfall induced event, approximate inches of rainfall n/a

7. If multiple locations listed below due to rain event, check here

7. Incident Location: (check all that apply)

- Plant
- Lift/Pump Station
- Peak Flow Basin
- Manhole(s)
- City Collection Line (Line Break / Joint)
- Private Sewer Line
- Basement
- Other (specify below)

Identify All Incident Locations by Name, Street Address or Manhole Number as appropriate. Mrs Salley called stating that water was seeping off of her curb at 1328 6th Ave. We had good flow at manhole 0525 and manhole 0522.

8. Cause of Incident:

- Intentional Bypass for Repair/Construction
- Excessive Rainfall, Snow Melt
- Unplanned Construction Related Break
- City Line Break (Not Construction Related)
- City Line Blockage
- Private Line Break
- Private Line Blockage
- Lagoon High Level
- Equipment Failure
- Control System Failure
- Power Related Failure
- Operations Related Failure
- Maintenance Related Failure
- Vandalism
- Other

Additional explanation of reason for incident: (use additional page if necessary)
 Upon arrival we noticed the clean out had some debris around the clean out.

9. Corrective Action, if any: (use additional page if necessary)

Our crew cleaned up around the clean out and spread lime. We informed the owner that she needed to call a plumber. We found out this morning that McCanns plumbing had the line open at 4:00 pm on the 8th of March..

Name: Chuck Staples Date: 3/11/19
 Title: Superintendent Phone: 913-682-1090

When Completed, E-mail to: cseeds@kdheks.gov Kansas Department of Health & Environment - Attn: Chris Seeds

Or Mail to: 1000 SW Jackson St., Suite 420, Topeka , KS 66612-1367
Fax 785.296.0086

REV 20120906

**KANSAS DEPARTMENT OF HEALTH AND ENVIRONMENT
WASTEWATER INCIDENT REPORT FORM**

Definitions are available at <http://www.kdheks.gov/water/tech.html>

Collection In-Plant Upset In-Plant Spill

1. FACILITY NAME: City of Leavenworth Kansas Permit # M-M012-1001

2. Within 24 hours of discovery, notify the KDHE Central Office (email - cseeds@kdheks.gov), (fax 785.296.0086), (telephone 785.296.5517) or your local KDHE district office. Written notification is required within 5 days of discovery. If the incident is not corrected within 5 days, send a written notification to KDHE indicating the status. This form is to be sent to KDHE when the incident ends.

KDHE Person Contacted: Chris Seeds Date: 3/11/09 Time: 8:03 am

3. Date Incident Discovered: 3/9/2019 Time: 11:07 am

4. Date Incident Ended: 3/9/2019 Time: 1:00 pm

5. Total estimated gallons bypassed, spilled, or routed through failed equipment for all locations on this form: 15 - 20 gallon

6. If rainfall induced event, approximate inches of rainfall n/a

7. If multiple locations listed below due to rain event, check here

Incident Location: (check all that apply)

<input type="checkbox"/> Plant	<input type="checkbox"/> City Collection Line (Line Break / Joint)
<input type="checkbox"/> Lift/Pump Station	<input type="checkbox"/> Private Sewer Line
<input type="checkbox"/> Peak Flow Basin	<input type="checkbox"/> Basement
<input checked="" type="checkbox"/> Manhole(s)	<input type="checkbox"/> Other (specify below)

Identify **All** Incident Locations by Name, Street Address or Manhole Number as appropriate.

Derrick Younger called stating that water was backing up into his basement at 1602 Westwood. The upstream manhole is 1352 and the downstream manhole is 1351.

8. Cause of Incident:

<input type="checkbox"/> Intentional Bypass for Repair/Construction	<input type="checkbox"/> Equipment Failure
<input type="checkbox"/> Excessive Rainfall, Snow Melt	<input type="checkbox"/> Control System Failure
<input type="checkbox"/> Unplanned Construction Related Break	<input type="checkbox"/> Power Related Failure
<input type="checkbox"/> City Line Break (Not Construction Related)	<input type="checkbox"/> Operations Related Failure
<input checked="" type="checkbox"/> City Line Blockage	<input type="checkbox"/> Maintenance Related Failure
<input type="checkbox"/> Private Line Break	<input type="checkbox"/> Vandalism
<input type="checkbox"/> Private Line Blockage	<input type="checkbox"/> Other
<input type="checkbox"/> Lagoon High Level	

Additional explanation of reason for incident: (use additional page if necessary)
 Upon arrival our crew noticed the upstream manhole was almost full and water was running out of the manhole through a hole in the barrel. We talked to the owner and he said he did not have water in his basement.

9. Corrective Action, if any: (use additional page if necessary)
 Our crew rodDED the line and hit something at 340 ft, we pulled back a few roots and we will follow up Monday with the camera crew. Flow was back to normal.

Name: Chuck Staples Date: 3/11/19
 Title: Superintendent Phone: 913-682-1090

When Completed, E-mail to: cseeds@kdheks.gov

Kansas Department of Health & Environment – Attn: Chris Seeds
Or Mail to: 1000 SW Jackson St., Suite 420, Topeka, KS 66612-1367
Fax 785.296.0086

REV 20120906



**KANSAS DEPARTMENT OF HEALTH AND ENVIRONMENT
WASTEWATER INCIDENT REPORT FORM**

Definitions are available at <http://www.kdheks.gov/water/tech.html>

Collection System Bypass In-Plant Diversion Upset Flow Through Spill

1. FACILITY NAME: City of Leavenworth Kansas Permit # M-M012-1001

2. Within 24 hours of discovery, notify the KDHE Central Office (email - cseeds@kdheks.gov), (fax 785.296.0086), (telephone 785.296.5517) or your local KDHE district office. Written notification is required within 5 days of discovery. If the incident is not corrected within 5 days, send a written notification to KDHE indicating the status. This form is to be sent to KDHE when the incident ends.

KDHE Person Contacted: Chris Seeds Date: 3/26/19 Time: 10:37 am

3. Date Incident Discovered: 3/23/2019 Time: 1:30 am

4. Date Incident Ended: 3/25/2019 Time: 1:30 am

5. Total estimated gallons bypassed, spilled, or routed through failed equipment for all locations on this form: 1.4 million gallons

6. If rainfall induced event, approximate inches of rainfall River Flood

7. Incident Location: (check all that apply) Plant City Collection Line (Line Break / Joint) Private Sewer Line Basement Other (specify below)

Identify All Incident Locations by Name, Street Address or Manhole Number as appropriate. Due to high river levels the Aeration Basin was not able to contain the flow we were pumping to it at the Wastewater Treatment Plant at 1800 South 2nd Street.

8. Cause of Incident: Intentional Bypass for Repair/Construction Excessive Rainfall, Snow Melt Unplanned Construction Related Break City Line Break (Not Construction Related) City Line Blockage Private Line Break Private Line Blockage Lagoon High Level Other

Additional explanation of reason for incident: (use additional page if necessary) The high levels in the Missouri River exceeded the 201 level and crested at 31.3 feet. Our pumps all came on at 1:30 am on 3/23/19 which caused the Aeration basin to overflow and spill into the flooded water at the Treatment Plant.

9. Corrective Action, if any: (use additional page if necessary) The river started to recede on Sunday and the Aeration basin stopped overflowing at 1:30 am on 3/25/19. No other overflows were reported within the City

Name: Chuck Staples Date: 3/26/2019

Title: Superintendent Phone: 913-682-1090

When Completed, E-mail to: cseeds@kdheks.gov

Kansas Department of Health & Environment – Attn: Chris Seeds
Or Mail to: 1000 SW Jackson St., Suite 420, Topeka, KS 66612-1367
Fax 785.296.0086

REV 20120906

**KANSAS DEPARTMENT OF HEALTH AND ENVIRONMENT
WASTEWATER INCIDENT REPORT FORM**

Definitions are available at <http://www.kdheks.gov/water/tech.html>

Collection System Bypass In-Plant Diversion In-Plant Upset In-Plant Flow Through Spill

1. FACILITY NAME: City of Leavenworth Kansas Permit # M-M012-1001

2. Within 24 hours of discovery, notify the KDHE Central Office (email – cseeds@kdheks.gov), (fax 785.296.0086), (telephone 785.296.5517) or your local KDHE district office. Written notification is required within 5 days of discovery. If the incident is not corrected within 5 days, send a written notification to KDHE indicating the status. This form is to be sent to KDHE when the incident ends.

KDHE Person Contacted: Chris Seeds Date: 3/28/19 Time: 1:37 pm

3. Date Incident Discovered: 3/28/2019 Time: 10:44 am

4. Date Incident Ended: 3/28/2019 Time: 12:04 pm

5. Total estimated gallons bypassed, spilled, or routed through failed equipment for all locations on this form: unknown contained in basement

6. If rainfall induced event, approximate inches of rainfall: n/a

7. If multiple locations listed below due to rain event, check here

Incident Location: (check all that apply)

Plant Lift/Pump Station Peak Flow Basin Manhole(s) Other (specify below)

City Collection Line (Line Break / Joint) Basement Private Sewer Line

Identify All Incident Locations by Name, Street Address or Manhole Number as appropriate. Julie Clare called stating that she had water in her basement at 804 south 3rd street. The upstream manhole is 0349 and 0350 and the downstream manhole is 0344 and 0349.

8. Cause of Incident:

Intentional Bypass for Repair/Construction Excessive Rainfall, Snow Melt Unplanned Construction Related Break City Line Break (Not Construction Related) City Line Blockage Private Line Break Private Line Blockage Lagoon High Level

Equipment Failure Control System Failure Power Related Failure Operations Related Failure Maintenance Related Failure Vandalism Other

Additional explanation of reason for incident: (use additional page if necessary) Our crew arrived and found standing water in manhole 0349. They went to manhole 0344 and hit something at 107 feet. They rodDED a total of 300 feet.

9. Corrective Action, if any: (use additional page if necessary) After rodding and restoring good glow we checked with the owner and noticed the water was going down slowly. We will follow up with cctv work to find out what caused the blockage.

Name: Chuck Staples Date: 3/28/19
Title: Superintendent Phone: 913-682-1090

When Completed, E-mail to: cseeds@kdheks.gov Kansas Department of Health & Environment – Attn: Chris Seeds

Or Mail to: 1000 SW Jackson St., Suite 420, Topeka, KS 66612-1367
Fax 785.296.0086

REV 20120906

**KANSAS DEPARTMENT OF HEALTH AND ENVIRONMENT
WASTEWATER INCIDENT REPORT FORM**

Definitions are available at <http://www.kdheks.gov/water/tech.html>

Collection In-Plant In-Plant Upset Diversion Flow Through Spill

1. FACILITY NAME: City of Leavenworth Kansas Permit # M-M012-1001

2. Within 24 hours of discovery, notify the KDHE Central Office (email - gseeds@kdheks.gov), (fax 785.296.0086), (telephone 785.296.5517) or your local KDHE district office. Written notification is required within 5 days of discovery. If the incident is not corrected within 5 days, send a written notification to KDHE indicating the status. This form is to be sent to KDHE when the incident ends.

KDHE Person Contacted: Chris Seeds Date: 4/9/19 Time: 8:17 am

3. Date Incident Discovered: 4/8/2019 Time: 10:30am

4. Date Incident Ended: 4/8/2019 Time: 11:44 am

5. Total estimated gallons bypassed, spilled, or routed through failed equipment for all locations on this form: 1500 gallons (from the time of the call)

6. If rainfall induced event, approximate inches of rainfall n/a

7. If multiple locations listed below due to rain event, check here

Incident Location: (check all that apply)

Plant
 Lift/Pump Station
 Peak Flow Basin
 Manhole(s)
 City Collection Line (Line Break / Joint)
 Private Sewer Line
 Basement
 Other (specify below)

Identify All Incident Locations by Name, Street Address or Manhole Number as appropriate.

Tony from the Carousel Museum called stating that their bathrooms were backing up and a manhole was bubbling over at 320 Esplanade Street. Upstream manhole is 0310.2 and the downstream is 0309.

8. Cause of Incident:

Intentional Bypass for Repair/Construction
 Excessive Rainfall, Snow Melt
 Unplanned Construction Related Break
 City Line Break (Not Construction Related)
 City Line Blockage
 Private Line Break
 Private Line Blockage
 Lagoon High Level
 Equipment Failure
 Control System Failure
 Power Related Failure
 Operations Related Failure
 Maintenance Related Failure
 Vandalism
 Other

Additional explanation of reason for incident: (use additional page if necessary)
 Upon arrival we noticed the upstream manhole bubbling over and running into the storm drain. Two witness stated that the manhole was overflowing at 6 am and the other said 8 am. One witness said the problem in the museum started the day before around 6:00 pm.

9. Corrective Action, if any: (use additional page if necessary)
 We roddeed hit something around 60 ft and then the water started to recede. We roddeed the rest of the line for 354 feet and then washed down the curb. We will add this information to the City's web site.

Name: Chuck Staples

Date: 4/09/2019

Title: Superintendent

Phone: 913-682-1090

When Completed, E-mail to: gseeds@kdheks.gov

Kansas Department of Health & Environment – Attn: Chris Seeds
Or Mail to: 1000 SW Jackson St., Suite 420, Topeka, KS 66612-1367
Fax 785.296.0086

REV 20120906

**KANSAS DEPARTMENT OF HEALTH AND ENVIRONMENT
WASTEWATER INCIDENT REPORT FORM**

Definitions are available at <http://www.kdheks.gov/water/tech.html>

Collection In-Plant Diversion Upset Flow Through Spill

1. FACILITY NAME: City of Leavenworth Kansas Permit # M-M012-1001

2. Within 24 hours of discovery, notify the KDHE Central Office (email - cseeds@kdheks.gov), (fax 785.296.0086), (telephone 785.296.5517) or your local KDHE district office. Written notification is required within 5 days of discovery. If the incident is not corrected within 5 days, send a written notification to KDHE indicating the status. This form is to be sent to KDHE when the incident ends.

KDHE Person Contacted: Chris Seeds Date: 4/9/19 Time: 7:49 am

3. Date Incident Discovered: 4/8/2019 Time: 1:20 pm

4. Date Incident Ended: 4/8/2019 Time: 1:58 pm

5. Total estimated gallons bypassed, spilled, or routed through failed equipment for all locations on this form: 5 gallons

6. If rainfall induced event, approximate inches of rainfall n/a

If multiple locations listed below due to rain event, check here

7. Incident Location: (check all that apply)

- Plant
- Lift/Pump Station
- Peak Flow Basin
- Manhole(s)
- City Collection Line (Line Break / Joint)
- Private Sewer Line
- Basement
- Other (specify below)

Identify All Incident Locations by Name, Street Address or Manhole Number as appropriate.

At 11:50 am we were called by McCann plumbing for assistance with a clean up at 716 Grand Ave.

8. Cause of Incident:

- Intentional Bypass for Repair/Construction
- Excessive Rainfall, Snow Melt
- Unplanned Construction Related Break
- City Line Break (Not Construction Related)
- City Line Blockage
- Private Line Break
- Private Line Blockage
- Lagoon High Level
- Equipment Failure
- Control System Failure
- Power Related Failure
- Operations Related Failure
- Maintenance Related Failure
- Vandalism
- Other

Additional explanation of reason for incident: (use additional page if necessary)
McCann's plumbing had cleaned out the lateral and there was a large amount of debris on the ground we were asked to clean up.

9. Corrective Action, if any: (use additional page if necessary)
Upon arrival we vacted up the debris and spread lime on the ground. Then we washed down the curb line. No water reached a storm drain. This was just a clean up operation.

Name: Chuck Staples Date: 4/09/2019

Title: Superintendent Phone: 913-682-1090

When Completed, E-mail to: cseeds@kdheks.gov

Kansas Department of Health & Environment - Attn: Chris Seeds
Or Mail to: 1000 SW Jackson St., Suite 420, Topeka, KS 66612-1367

**KANSAS DEPARTMENT OF HEALTH AND ENVIRONMENT
WASTEWATER INCIDENT REPORT FORM**

Definitions are available at <http://www.kdheks.gov/water/tech.html>

Collection In-Plant Upset Flow Through Spill

1. FACILITY NAME: City of Leavenworth Kansas Permit # M-M012-1001

2. Within 24 hours of discovery, notify the KDHE Central Office (email - cseeds@kdheks.gov), (fax 785.296.0086), (telephone 785.296.5517) or your local KDHE district office. Written notification is required within 5 days of discovery. If the incident is not corrected within 5 days, send a written notification to KDHE indicating the status. This form is to be sent to KDHE when the incident ends.

KDHE Person Contacted: Chris Seeds Date: 4/12/19 Time: 8:01 am

3. Date Incident Discovered: 4/11/2019 Time: 2:11 pm

4. Date Incident Ended: 4/11/2019 Time: 3:30 pm

5. Total estimated gallons bypassed, spilled, or routed through failed equipment for all locations on this form: Unknown containe in basement

6. If rainfall induced event, approximate inches of rainfall n/a

7. If multiple locations listed below due to rain event, check here

7. Incident Location: (check all that apply)
 Plant
 Lift/Pump Station
 Peak Flow Basin
 Manhole(s)
 City Collection Line (Line Break / Joint)
 Private Sewer Line
 Basement
 Other (specify below)

Identify All Incident Locations by Name, Street Address or Manhole Number as appropriate. Lynn from Stoneleigh Apt called stating their drain and restrooms are backing up at 2014 Seneca Street. The upstream Manhole is 1149 and the downstream Manhole is 1148.

8. Cause of Incident:
 Intentional Bypass for Repair/Construction
 Excessive Rainfall, Snow Melt
 Unplanned Construction Related Break
 City Line Break (Not Construction Related)
 City Line Blockage
 Private Line Break
 Private Line Blockage
 Lagoon High Level
 Equipment Failure
 Control System Failure
 Power Related Failure
 Operations Related Failure
 Maintenance Related Failure
 Vandalism
 Other

8. Additional explanation of reason for incident: (use additional page if necessary)
 Upon arrival we checked the manholes and had good flow. We rodde the line for 512 feet.

9. Corrective Action, if any: (use additional page if necessary)
 After rodding the line we talked the Apr manager said he had a plumber coming out. The line was opened around 4:00 pm

Name: Chuck Staples Date: 4/12/19
 Title: Superintendent Phone: 913-682-1090

When Completed, E-mail to: cseeds@kdheks.gov
 Kansas Department of Health & Environment - Attn: Chris Seeds
 Or Mail to: 1000 SW Jackson St., Suite 420, Topeka, KS 66612-1367

**KANSAS DEPARTMENT OF HEALTH AND ENVIRONMENT
WASTEWATER INCIDENT REPORT FORM**

Definitions are available at <http://www.kdheks.gov/water/tech.html>

Collection In-Plant In-Plant Upset Flow Through Spill

1. FACILITY NAME: City of Leavenworth Kansas Permit # M-M012-1001

2. Within 24 hours of discovery, notify the KDHE Central Office (email - gseeds@kdheks.gov), (fax 785.296.0086), (telephone 785.296.5517) or your local KDHE district office. Written notification is required within 5 days of discovery. If the incident is not corrected within 5 days, send a written notification to KDHE indicating the status. This form is to be sent to KDHE when the incident ends.

KDHE Person Contacted: Chris Seeds Date: 4/12/19 Time: 10:51 am

3. Date Incident Discovered: 4/11/2019 Time: 7:18 pm

4. Date Incident Ended: 4/11/2019 Time: 8:32 pm

5. Total estimated gallons bypassed, spilled, or routed through failed equipment for all locations on this form: unknown contained in crawl space

6. If rainfall induced event, approximate inches of rainfall n/a

If multiple locations listed below due to rain event, check here

7. Incident Location: (check all that apply)

- Plant
- Lift/Pump Station
- Peak Flow Basin
- Manhole(s)
- City Collection Line (Line Break / Joint)
- Private Sewer Line
- Basement
- Other (specify below)

Identify All Incident Locations by Name, Street Address or Manhole Number as appropriate. William Daughtry called stating water was leaking from a broken line under his bathroom into a crawl space at 1511 Newman St. The upstream manhole is 1051 and the downstream manhole is 1050.

8. Cause of Incident:

- Intentional Bypass for Repair/Construction
- Excessive Rainfall, Snow Melt
- Unplanned Construction Related Break
- City Line Break (Not Construction Related)
- City Line Blockage
- Private Line Break
- Private Line Blockage
- Lagoon High Level
- Equipment Failure
- Control System Failure
- Power Related Failure
- Operations Related Failure
- Maintenance Related Failure
- Vandalism
- Other

Additional explanation of reason for incident: (use additional page if necessary)

Upon arrival we checked our manholes and had good flow so we did not clean any lines.

9. Corrective Action, if any: (use additional page if necessary)

Our crew talked to the owner and was informed that a drain line had broken and he had called a plumber. The City's plumbing inspector called this morning and was informed the line was repaired.

Name: Chuck Staples

Date: 4/12/19

Title: Superintendent

Phone 913-682-1090

When Completed, E-mail to: gseeds@kdheks.gov

Kansas Department of Health & Environment - Attn: Chris Seeds
Or Mail to: 1000 SW Jackson St., Suite 420, Topeka, KS 66612-1367

... of the ...
... ..

... ..

... ..

... ..

... ..

... ..

... ..

... ..

... ..

... ..

**KANSAS DEPARTMENT OF HEALTH AND ENVIRONMENT
WASTEWATER INCIDENT REPORT FORM**

Definitions are available at <http://www.kdheks.gov/water/tech.html>

Collection In-Plant Upset In-Plant Spill

1. FACILITY NAME: City of Leavenworth Kansas Permit # M-M012-1001

2. Within 24 hours of discovery, notify the KDHE Central Office (email - cseeds@kdheks.gov), (fax 785.296.0086), (telephone 785.296.5517) or your local KDHE district office. Written notification is required within 5 days of discovery. If the incident is not corrected within 5 days, send a written notification to KDHE indicating the status. This form is to be sent to KDHE when the incident ends.

KDHE Person Contacted: Chris Seeds Date: 4/15/19 Time: 8:52 am

3. Date Incident Discovered: 4/13/2019 Time: 10:00 am

4. Date Incident Ended: 4/13/2019 Time: 10:50 am

5. Total estimated gallons bypassed, spilled, or routed through failed equipment for all locations on this form: unknown contained in basement

6. If rainfall induced event, approximate inches of rainfall: n/a

7. Incident Location: (check all that apply) If multiple locations listed below due to rain event, check here

- Plant
- Lift/Pump Station
- Peak Flow Basin
- Manhole(s)
- City Collection Line (Line Break / Joint)
- Private Sewer Line
- Basement
- Other (specify below)

Identify All Incident Locations by Name, Street Address or Manhole Number as appropriate. Mr. Roberson call stating that he had water backing up into his basement at 1515 Newman street, the upstream manhole is 1052 and the4 downstream manhole is 1051.

8. Cause of Incident:

- Intentional Bypass for Repair/Construction
- Excessive Rainfall, Snow Melt
- Unplanned Construction Related Break
- City Line Break (Not Construction Related)
- City Line Blockage
- Private Line Break
- Private Line Blockage
- Lagoon High Level
- Equipment Failure
- Control System Failure
- Power Related Failure
- Operations Related Failure
- Maintenance Related Failure
- Vandalism
- Other

Additional explanation of reason for incident: (use additional page if necessary) Upon arrival we noticed good and we rodDED 326 feet with no problems and we did not bring back anything.

9. Corrective Action, if any: (use additional page if necessary) We finished rodding the line and then talked to the home owner that stated the water started to reced. This line was root treated this year.

Name: Chuck Staples Date: 4/15/19
Title: Superintendent Phone: 913-682-1090

When Completed, E-mail to: cseeds@kdheks.gov Kansas Department of Health & Environment - Attn: Chris Seeds

Or Mail to: 1000 SW Jackson St., Suite 420, Topeka, KS 66612-1367
Fax 785.296.0086

REV 20120906

**KANSAS DEPARTMENT OF HEALTH AND ENVIRONMENT
WASTEWATER INCIDENT REPORT FORM**

708 Grand Ave

Definitions are available at <http://www.kdheks.gov/water/tech.html>

Collection In-Plant Upset Flow Through Spill

1. FACILITY NAME: City of Leavenworth Kansas Permit # M-M012-1001

2. Within 24 hours of discovery, notify the KDHE Central Office (email - cseeds@kdheks.gov), (fax 785.296.0086), (telephone 785.296.5517) or your local KDHE district office. Written notification is required within 5 days of discovery. If the incident is not corrected within 5 days, send a written notification to KDHE indicating the status. This form is to be sent to KDHE when the incident ends.

KDHE Person Contacted: Chris Seeds Date: 4/30/19 Time: 12:56 pm

3. Date Incident Discovered: 4/29/2019 Time: 8:05 am

4. Date Incident Ended: 4/29/2019 Time: 2:00 pm

5. Total estimated gallons bypassed, spilled, or routed through failed equipment for all locations on this form: 5 gallons

6. If rainfall induced event, approximate inches of rainfall n/a

If multiple locations listed below due to rain event, check here

7. Incident Location: (check all that apply)

- Plant
- Lift/Pump Station
- Peak Flow Basin
- Manhole(s)
- City Collection Line (Line Break / Joint)
- Private Sewer Line
- Basement
- Other (specify below)

Identify All Incident Locations by Name, Street Address or Manhole Number as appropriate.

April 27th a resident call Code Enforcement and left a voice mail concerning wastewater running into the street at 712 Grand Ave. WPC did not receive the voice mail until Monday April 29th. The resident did no leave a contact number. This is a private line which takes care of 5 houses.

8. Cause of Incident:

- Intentional Bypass for Repair/Construction
- Excessive Rainfall, Snow Melt
- Unplanned Construction Related Break
- City Line Break (Not Construction Related)
- City Line Blockage
- Private Line Break
- Private Line Blockage
- Lagoon High Level
- Equipment Failure
- Control System Failure
- Power Related Failure
- Operations Related Failure
- Maintenance Related Failure
- Vandalism
- Other

Additional explanation of reason for incident: (use additional page if necessary)
Upon arrival the line was not overflowing but we could tell it had. The owner was contacted and informed they needed to call a plumber.

9. Corrective Action, if any: (use additional page if necessary)
We vacated up the curb as we flushed with water and placed containment socks around the lateral and spread lime on the ground. I found out today that the line was open around 2:00 pm on April 29th and that a lateral cap had been replaced.

Name: Chuck Staples

Date: 4/30/19

Title: Superintendent

Phone: 913-682-1090

**KANSAS DEPARTMENT OF HEALTH AND ENVIRONMENT
WASTEWATER INCIDENT REPORT FORM**

Information are available at <http://www.kdheks.gov/water/tech.html>

Collection In-Plant Upset Flow Through Spill

1. FACILITY NAME: City of Leavenworth Kansas Permit # M-M012-1001

2. Within 24 hours of discovery, notify the KDHE Central Office (email - cseeds@kdheks.gov), (fax 785.296.0086), (telephone 785.296.5517) or your local KDHE district office. Written notification is required within 5 days of discovery. If the incident is not corrected within 5 days, send a written notification to KDHE indicating the status. This form is to be sent to KDHE when the incident ends.

KDHE Person Contacted: Chris Seeds Date: 5/1/19 Time: 9:08 am

3. Date Incident Discovered: 4/30/2019 Time: 9:01 pm

4. Date Incident Ended: 4/30/2019 Time: 10:50 pm

5. Total estimated gallons bypassed, spilled, or routed through failed equipment for all locations on this form: 15,750 gallons

6. If rainfall induced event, approximate inches of rainfall 3.32 inches

If multiple locations listed below due to rain event, check here

7. Incident Location: (check all that apply)

Plant Lift/Pump Station Peak Flow Basin Manhole(s)
 City Collection Line (Line Break / Joint) Private Sewer Line Basement Other (specify below)

Identify All Incident Locations by Name, Street Address or Manhole Number as appropriate. Austin Gunther called at 9:01 pm stating that the manhole at 1415 Ottawa St. The upstream manhole is 0699.1 and the downstream is 0698.

8. Cause of Incident:

Intentional Bypass for Repair/Construction
 Excessive Rainfall, Snow Melt
 Unplanned Construction Related Break
 City Line Break (Not Construction Related)
 City Line Blockage
 Private Line Break
 Private Line Blockage
 Lagoon High Level
 Equipment Failure
 Control System Failure
 Power Related Failure
 Operations Related Failure
 Maintenance Related Failure
 Vandalism
 Other

Additional explanation of reason for incident: (use additional page if necessary)
 Our crew started to rod from the downstream manhole an hit a blockage at 209 feet then the water started to go down.

9. Corrective Action, if any: (use additional page if necessary)
 After the flow was back to normal our crew placed out contaminated creek signs and this morning we grabbed upstream and downstream E-coli samples. We will also add this area to our web site for notification.

Name: Chuck Staples Date: 5/01/19
 Title: Superintendent Phone: 913-682-1090
 When Completed, E-mail to: cseeds@kdheks.gov

Kansas Department of Health & Environment – Attn: Chris Seeds
Or Mail to: 1000 SW Jackson St., Suite 420, Topeka, KS 66612-1367
Fax 785.296.0086

REV 20120906



**KANSAS DEPARTMENT OF HEALTH AND ENVIRONMENT
WASTEWATER INCIDENT REPORT FORM**

Definitions are available at <http://www.kdheks.gov/water/tech.html>

Collection System Bypass In-Plant Diversion Upset In-Plant Flow Through Spill

1. FACILITY NAME: City of Leavenworth Kansas Permit # M-M012-1001

2. Within 24 hours of discovery, notify the KDHE Central Office (email - cseeds@kdheks.gov), (fax 785.296.0086), (telephone 785.296.5517) or your local KDHE district office. Written notification is required within 5 days of discovery. If the incident is not corrected within 5 days, send a written notification to KDHE indicating the status. This form is to be sent to KDHE when the incident ends.

KDHE Person Contacted: Chris Seeds Date: 5/20/19 Time: 7:35 am

3. Date Incident Discovered: 5/13/2019 Time: 2:46 am

4. Date Incident Ended: 5/17/2019 Time:

5. Total estimated gallons bypassed, spilled, or routed through failed equipment for all locations on this form: 10 gallons

6. If rainfall induced event, approximate inches of rainfall n/a

7. Incident Location: (check all that apply) If multiple locations listed below due to rain event, check here

Identify All Incident Locations by Name, Street Address or Manhole Number as appropriate. Plant Lift/Pump Station Peak Flow Basin Manhole(s) City Collection Line (Line Break / Joint) Private Sewer Line Basement Other (specify below)

8. Cause of Incident: Intentional Bypass for Repair/Construction Excessive Rainfall, Snow Melt Unplanned Construction Related Break City Line Break (Not Construction Related) City Line Blockage Private Line Break Private Line Blockage Lagoon High Level Equipment Failure Control System Failure Power Related Failure Operations Related Failure Maintenance Related Failure Vandalism Other

9. Additional explanation of reason for incident: (use additional page if necessary) Our crew arrived and noticed water around the clean out. We checked our lines and had good flow. We responded to this address on April 2, 2019

Corrective Action, if any: (use additional page if necessary) We cleaned up around the clean out and placed containment socks and spread lime. We informed the owner they needed to call a plumber. We turned this over to our inspection branch.

Name: Chuck Staples Date: 5/20/19
Title: Superintendent Phone: 913-682-1090

When Completed, E-mail to: cseeds@kdheks.gov Kansas Department of Health & Environment - Attn: Chris Seeds

Or Mail to: 1000 SW Jackson St., Suite 420, Topeka, KS 66612-1367
Fax 785.296.0086

REV 20120906

**KANSAS DEPARTMENT OF HEALTH AND ENVIRONMENT
WASTEWATER INCIDENT REPORT FORM**

Definitions are available at <http://www.kdheks.gov/water/tech.html>

Collection In-Plant In-Plant Upset Diversion System Bypass Spill

1. FACILITY NAME: City of Leavenworth Kansas Permit # M-M012-1001

2. Within 24 hours of discovery, notify the KDHE Central Office (email - cseeds@kdheks.gov), (fax 785.296.0086), (telephone 785.296.5517) or your local KDHE district office. Written notification is required within 5 days of discovery. If the incident is not corrected within 5 days, send a written notification to KDHE indicating the status. This form is to be sent to KDHE when the incident ends.

KDHE Person Contacted: Chris Seeds Date: 5/22/19 Time: 8:27 am

3. Date Incident Discovered: 5/21/2019 Time: 8:30 am

4. Date Incident Ended: 5/21/2019 Time: 6:30 pm

5. Total estimated gallons bypassed, spilled, or routed through failed equipment for all locations on this form: unknown

6. If rainfall induced event, approximate inches of rainfall 3.0 inches

If multiple locations listed below due to rain event, check here

7. Incident Location: (check all that apply)

- Plant
- Lift/Pump Station
- Peak Flow Basin
- Manhole(s)
- City Collection Line (Line Break / Joint)
- Private Sewer Line
- Basement
- Other (specify below)

Identify All Incident Locations by Name, Street Address or Manhole Number as appropriate. The following manholes overflowed starting at 8:30 am and ending at 6:30pm. M/H 0698.1, 1190, 0205, 1, 0206, 1179, 1177, 0316, 1, 0787.

8. Cause of Incident:

- Intentional Bypass for Repair/Construction
- Excessive Rainfall, Snow Melt
- Unplanned Construction Related Break
- City Line Break (Not Construction Related)
- City Line Blockage
- Private Line Break
- Private Line Blockage
- Lagoon High Level
- Equipment Failure
- Control System Failure
- Power Related Failure
- Operations Related Failure
- Maintenance Related Failure
- Vandalism
- Other

Additional explanation of reason for incident: (use additional page if necessary) Due to heavy rain and high flows coming into the Treatment plant our sanitary lines backed up. We have notified the public on the City's web site.

9.

Corrective Action, if any: (use additional page if necessary) Waited for rain to stop and all manholes had quit overflowing at 6:30 pm. Plant flow were down at that point.

Name: Chuck Staples Title: Superintendent
Date: 5/22/19 Phone: 913-682-1090

When Completed, E-mail to: cseeds@kdheks.gov Kansas Department of Health & Environment - Attn: Chris Seeds

When Completed, E-mail to: cseeds@kdhks.gov
Kansas Department of Health & Environment – Attn: Chris Seeds
Or Mail to: 1000 SW Jackson St., Suite 420, Topeka, KS 66612-1367
Fax 785.296.0086

REV 20120906

**KANSAS DEPARTMENT OF HEALTH AND ENVIRONMENT
WASTEWATER INCIDENT REPORT FORM**

Definitions are available at <http://www.kdheks.gov/water/tech.html>

Collection In-Plant Upset Flow Through Spill

System Bypass Diversion Kansas Permit # M-M012-1001

1. FACILITY NAME: City of Leavenworth
 Within 24 hours of discovery, notify the KDHE Central Office (email – cseeds@kdheks.gov), (fax 785.296.0086), (telephone 785.296.5517) or your local KDHE district office. Written notification is required within 5 days of discovery. If the incident is not corrected within 5 days, send a written notification to KDHE indicating the status. This form is to be sent to KDHE when the incident ends.

KDHE Person Contacted: Chris Seeds Date: 5/14/19 Time: 3:03 pm
 Date Incident Discovered: 5/13/2019 Time: 4:55 pm
 Date Incident Ended: 4/14/2019 Time: 2:30 pm

5. Total estimated gallons bypassed, spilled, or routed through failed equipment for all locations on this form: 5 gallons
 6. If rainfall induced event, approximate inches of rainfall: n/a
 If multiple locations listed below due to rain event, check here

7. Incident Location: (check all that apply)
 Plant City Collection Line (Line Break / Joint) Private Sewer Line Basement Other (specify below)
 Lift/Pump Station Peak Flow Basin Manhole(s)

Identify All Incident Locations by Name, Street Address or Manhole Number as appropriate. Bradley McWilliam called stating water was running from their neighbors clean out onto his property at 1119 N 8th Street. The upstream m/h is 0688.1 and the downstream m/h is 0687.7.

8. Cause of Incident:
 Intentional Bypass for Repair/Construction
 Excessive Rainfall, Snow Melt
 Unplanned Construction Related Break
 City Line Break (Not Construction Related)
 City Line Blockage
 Private Line Break
 Private Line Blockage
 Lagoon High Level
 Equipment Failure
 Control System Failure
 Power Related Failure
 Operations Related Failure
 Maintenance Related Failure
 Vandalism
 Other

Additional explanation of reason for incident: (use additional page if necessary)
 Upon arrival we noticed the clean out was full of water so we placed containment socks around and then checked our line. We rodDED 193 feet with no problems.

9. Corrective Action, if any: (use additional page if necessary)
 Our crew informed the owner that they needed to call a plumber and at 2:45 pm I was call and informed the line had been opened at 2:30 pm.

Name: Chuck Staples Date: 5/14/19
 Title: Superintendent Phone: 913-682-1090

When Completed, E-mail to: cseeds@kdheks.gov Kansas Department of Health & Environment – Attn: Chris Seeds

Or Mail to: 1000 SW Jackson St., Suite 420, Topeka, KS 66612-1367
Fax 785.296.0086

REV 20120906



**KANSAS DEPARTMENT OF HEALTH AND ENVIRONMENT
WASTEWATER INCIDENT REPORT FORM**

Information are available at <http://www.kdheks.gov/water/tech.html>

Collection In-Plant Upset Flow Through Spill

1. FACILITY NAME: City of Leavenworth Kansas Permit # M-M012-1001

2. Within 24 hours of discovery, notify the KDHE Central Office (email - cseeds@kdheks.gov), (fax 785.296.0086), (telephone 785.296.5517) or your local KDHE district office. Written notification is required within 5 days of discovery. If the incident is not corrected within 5 days, send a written notification to KDHE indicating the status. This form is to be sent to KDHE when the incident ends.

KDHE Person Contacted: Chris Seeds Date: 5/16/19 Time: 8:27 AM

3. Date Incident Discovered: 5/15/2019 Time: 5:05 PM

4. Date Incident Ended: 5/15/2019 Time: 6:25 PM

5. Total estimated gallons bypassed, spilled, or routed through failed equipment for all locations on this form: 25 GALLONS

6. If rainfall induced event, approximate inches of rainfall n/a

7. If multiple locations listed below due to rain event, check here

Incident Location: (check all that apply)

Plant
 Lift/Pump Station
 Peak Flow Basin
 Manhole(s)
 City Collection Line (Line Break / Joint)
 Private Sewer Line
 Basement
 Other (specify below)

Identify All Incident Locations by Name, Street Address or Manhole Number as appropriate. A local plumber called stating that was backing up in the basement of 712 Grand ave.. This is a private lateral that takes care of 5 houses.

8. Cause of Incident:

- Intentional Bypass for Repair/Construction
- Excessive Rainfall, Snow Melt
- Unplanned Construction Related Break
- City Line Break (Not Construction Related)
- City Line Blockage
- Private Line Break
- Private Line Blockage
- Lagoon High Level
- Equipment Failure
- Control System Failure
- Power Related Failure
- Operations Related Failure
- Maintenance Related Failure
- Vandalism
- Other

Additional explanation of reason for incident: (use additional page if necessary) J.F, Denney call wanting assistance when they opened the cap on the lateral. We arrived and setup waiting for the plumber to open this clean out.

9. Corrective Action, if any: (use additional page if necessary) We Vactored up the water and spread lime on the ground. This is a private lateral.

Name: Chuck Staples Date: 5/16/19
 Title: Superintendent Phone: 913-682-1090

When Completed, E-mail to: cseeds@kdheks.gov
 Kansas Department of Health & Environment - Attn: Chris Seeds
 Or Mail to: 1000 SW Jackson St., Suite 420, Topeka, KS 66612-1367

STATE OF NEW YORK
IN SENATE
January 12, 2011.

REPORT
OF THE

COMMISSIONERS OF THE DEPARTMENT OF SOCIAL SERVICES
ON THE
OPERATIONS OF THE DEPARTMENT OF SOCIAL SERVICES
FOR THE FISCAL YEAR ENDING JUNE 30, 2010

ALBANY: PRINTED BY THE STATE WASHINGTON SQUARE, 1224
UNIVERSITY OF THE STATE OF NEW YORK
ALBANY, NEW YORK 12242-1200

STATE OF NEW YORK
IN SENATE
January 12, 2011.

REPORT
OF THE

COMMISSIONERS OF THE DEPARTMENT OF SOCIAL SERVICES
ON THE
OPERATIONS OF THE DEPARTMENT OF SOCIAL SERVICES
FOR THE FISCAL YEAR ENDING JUNE 30, 2010

ALBANY: PRINTED BY THE STATE WASHINGTON SQUARE, 1224
UNIVERSITY OF THE STATE OF NEW YORK
ALBANY, NEW YORK 12242-1200

STATE OF NEW YORK
IN SENATE
January 12, 2011.

REPORT
OF THE

COMMISSIONERS OF THE DEPARTMENT OF SOCIAL SERVICES
ON THE
OPERATIONS OF THE DEPARTMENT OF SOCIAL SERVICES
FOR THE FISCAL YEAR ENDING JUNE 30, 2010

Or Mail to: 1000 SW Jackson St., Suite 420, Topeka , KS 66612-1367
Fax 785.296.0086

REV 20120906

**KANSAS DEPARTMENT OF HEALTH AND ENVIRONMENT
WASTEWATER INCIDENT REPORT FORM**

Definitions are available at <http://www.kdheks.gov/water/tech.html>

Collection In-Plant In-Plant Upset Flow Through Spill

1. FACILITY NAME: City of Leavenworth Kansas Permit # M-M012-1001

2. Within 24 hours of discovery, notify the KDHE Central Office (email - gseeds@kdheks.gov), (fax 785.296.0086), (telephone 785.296.5517) or your local KDHE district office. Written notification is required within 5 days of discovery. If the incident is not corrected within 5 days, send a written notification to KDHE indicating the status. This form is to be sent to KDHE when the incident ends.

KDHE Person Contacted: Chris Seeds Date: 6/6/19 Time: 10:55 AM

3. Date Incident Discovered: 6/4/2019 Time: 7:30 PM

4. Date Incident Ended: 6/6/2019 Time: 1:30 am

5. Total estimated gallons bypassed, spilled, or routed through failed equipment for all locations on this form: 4520 gallons

6. If rainfall induced event, approximate inches of rainfall n/a

If multiple locations listed below due to rain event, check here

7. Incident Location: (check all that apply)

- Plant
- Lift/Pump Station
- Peak Flow Basin
- Manhole(s)
- City Collection Line (Line Break / Joint)
- Private Sewer Line
- Basement
- Other (specify below)

Identify All Incident Locations by Name, Street Address or Manhole Number as appropriate. Our utility locate operators call stating that water was leaking into a construction pit at 5151 South 4th street. This is a Forced main for Hallmark and Select Lift stations.

8. Cause of Incident:

- Intentional Bypass for Repair/Construction
- Excessive Rainfall, Snow Melt
- Unplanned Construction Related Break
- City Line Break (Not Construction Related)
- City Line Blockage
- Private Line Break
- Private Line Blockage
- Lagoon High Level
- Equipment Failure
- Control System Failure
- Power Related Failure
- Operations Related Failure
- Maintenance Related Failure
- Vandalism
- Other

Additional explanation of reason for incident: (use additional page if necessary)
This line was installed in the late 60's and developed a crack on the bottom of the pipe ans started to leak. Once exposed we installe two 12 inch repair sleeves to temporary stop the leak @ 4:30 am, 6/5/219.

9. Corrective Action, if any: (use additional page if necessary)
On 6/5/19 at 9:00 pm we returne with new pipe and clamps for the permanent repair. This repair was finished at 1:30 am and normal flow returned from the Lift station. No leaks noted.

Name: Chuck Staples Date: 6/6/19
Title: Superintendent Phone: 913-682-1090

When Completed, E-mail to: gseeds@kdheks.gov

Kansas Department of Health & Environment – Attn: Chris Seeds
Or Mail to: 1000 SW Jackson St., Suite 420, Topeka, KS 66612-1367
Fax 785.296.0086

REV 20120906

**KANSAS DEPARTMENT OF HEALTH AND ENVIRONMENT
WASTEWATER INCIDENT REPORT FORM**

Definitions are available at <http://www.kdheks.gov/water/tech.html>

Collection In-Plant Upset Flow Through Spill

1. FACILITY NAME: City of Leavenworth Kansas Permit # M-M012-1001

2. Within 24 hours of discovery, notify the KDHE Central Office (email – cseeds@kdheks.gov), (fax 785.296.0086), (telephone 785.296.5517) or your local KDHE district office. Written notification is required within 5 days of discovery. If the incident is not corrected within 5 days, send a written notification to KDHE indicating the status. This form is to be sent to KDHE when the incident ends.

KDHE Person Contacted: Chris Seeds Date: 6/17/19 Time: 3:16 pm

3. Date Incident Discovered: 6/16/2019 Time: 6:01 pm

4. Date Incident Ended: 6/17/2019 Time: 10:30 pm

5. Total estimated gallons bypassed, spilled, or routed through failed equipment for all locations on this form: 5 gallons

6. If rainfall induced event, approximate inches of rainfall n/a

If multiple locations listed below due to rain event, check here

7. Incident Location: (check all that apply)

- Plant
- Lift/Pump Station
- Peak Flow Basin
- Manhole(s)
- City Collection Line (Line Break / Joint)
- Private Sewer Line
- Basement
- Other (specify below)

Identify All Incident Locations by Name, Street Address or Manhole Number as appropriate. Mike Burgess called stating that his line was backing up at 605 10th Ave. The upstream manhole is 0376 and the downstream manhole is 0376.1.

8. Cause of Incident:

- Intentional Bypass for Repair/Construction
- Excessive Rainfall, Snow Melt
- Unplanned Construction Related Break
- City Line Break (Not Construction Related)
- City Line Blockage
- Private Line Break
- Private Line Blockage
- Lagoon High Level
- Equipment Failure
- Control System Failure
- Power Related Failure
- Operations Related Failure
- Maintenance Related Failure
- Vandalism
- Other

Additional explanation of reason for incident: (use additional page if necessary)
Upon arrival we checked our line and had good flow then we rodde 141 feet with no problems.

9.

Corrective Action, if any: (use additional page if necessary)
After rodding the line we informed the owner he needed to call a plumber and we cleaned up around the clean out. This afternoon i contacted the owner and the line was opern at 10:30 this morning.

Name: Chuck Staples Date: 6/17/19
Title: Superintendent Phone: 913-682-1090

When Completed, E-mail to: cseeds@kdheks.gov

Kansas Department of Health & Environment – Attn: Chris Seeds
Or Mail to: 1000 SW Jackson St., Suite 420, Topeka, KS 66612-1367

Faint, illegible text covering the majority of the page, likely bleed-through from the reverse side of the document.

**KANSAS DEPARTMENT OF HEALTH AND ENVIRONMENT
WASTEWATER INCIDENT REPORT FORM**

Definitions are available at <http://www.kdheks.gov/water/tech.html>

Collection System Bypass In-Plant Diversion Upset In-Plant Flow Through Spill

1. FACILITY NAME: City of Leavenworth Kansas Permit # M-M012-1001

2. Within 24 hours of discovery, notify the KDHE Central Office (email – cseeds@kdheks.gov), (fax 785.296.0086), (telephone 785.296.5517) or your local KDHE district office. Written notification is required within 5 days of discovery. If the incident is not corrected within 5 days, send a written notification to KDHE indicating the status. This form is to be sent to KDHE when the incident ends.

KDHE Person Contacted: Chris Seeds Date: 6/24/19 Time: 8:39 pm

3. Date Incident Discovered: 6/23/2019 Time: 9:00 am

4. Date Incident Ended: 6/23/2019 Time: 3:00 pm

5. Total estimated gallons bypassed, spilled, or routed through failed equipment for all locations on this form: 6,000 gallons

6. If rainfall induced event, approximate inches of rainfall n/a

7. If multiple locations listed below due to rain event, check here

Incident Location: (check all that apply)

Plant
 Lift/Pump Station
 Peak Flow Basin
 Manhole(s)
 City Collection Line (Line Break / Joint)
 Private Sewer Line
 Basement
 Other (specify below)

Identify All Incident Locations by Name, Street Address or Manhole Number as appropriate. Due to heavy rain manhole 1179 overflowed at Broadway Street and Cherokee Street.

8. Cause of Incident:

Intentional Bypass for Repair/Construction
 Excessive Rainfall, Snow Melt
 Unplanned Construction Related Break
 City Line Break (Not Construction Related)
 City Line Blockage
 Private Line Break
 Private Line Blockage
 Lagoon High Level
 Equipment Failure
 Control System Failure
 Power Related Failure
 Operations Related Failure
 Maintenance Related Failure
 Vandalism
 Other

Additional explanation of reason for incident: (use additional page if necessary)
 We noticed the manhole was overflowing and we place a barricade to warn traffic.

9. Corrective Action, if any: (use additional page if necessary)
 The rain had quit and the high flows started to subside and the manhole was no longer overflowing at 3:00 pm. We picked up our barricade at that time.

Name: Chuck Staples Date: 6/24/19
 Title: Superintendent Phone: 913-682-1090

When Completed, E-mail to: cseeds@kdheks.gov
 Kansas Department of Health & Environment – Attn: Chris Seeds
 Or Mail to: 1000 SW Jackson St., Suite 420, Topeka, KS 66612-1367
 Fax 785.296.0086

**KANSAS DEPARTMENT OF HEALTH AND ENVIRONMENT
WASTEWATER INCIDENT REPORT FORM**

Definitions are available at <http://www.kdheks.gov/water/tech.html>

Collection In-Plant In-Plant Spill
 System Bypass In-Plant Upset Flow Through

1. FACILITY NAME: City of Leavenworth Kansas Permit # M-M012-1001

2. Within 24 hours of discovery, notify the KDHE Central Office (email - cseds@kdheks.gov), (fax 785.296.0086), (telephone 785.296.5517) or your local KDHE district office. Written notification is required within 5 days of discovery. If the incident is not corrected within 5 days, send a written notification to KDHE indicating the status. This form is to be sent to KDHE when the incident ends.

KDHE Person Contacted: Chris Seeds Date: 6/28/19 Time: 7:33 am

3. Date Incident Discovered: 6/23/2019 Time: 4:10 pm

4. Date Incident Ended: 6/27/2019 Time: 4:00pm

5. Total estimated gallons bypassed, spilled, or routed through failed equipment for all locations on this form: unknown contained in basement

6. If rainfall induced event, approximate inches of rainfall 4.5 inches

If multiple locations listed below due to rain event, check here

7. Incident Location: (check all that apply)

- Plant
- Lift/Pump Station
- Peak Flow Basin
- Manhole(s)
- City Collection Line (Line Break / Joint)
- Private Sewer Line
- Basement
- Other (specify below)

Identify All Incident Locations by Name, Street Address or Manhole Number as appropriate.

Mr. Green at 420 Elm st called stating he had water backing up in his basement. The city had 4.5 inches of rain in the last 24 hours. The upstream manhole is 0585 and the downstream manhole is 0712. s

8.

Cause of Incident:

- Intentional Bypass for Repair/Construction
- Excessive Rainfall, Snow Melt
- Unplanned Construction Related Break
- City Line Break (Not Construction Related)
- City Line Blockage
- Private Line Break
- Private Line Blockage
- Lagoon High Level
- Equipment Failure
- Control System Failure
- Power Related Failure
- Operations Related Failure
- Maintenance Related Failure
- Vandalism
- Other

Additional explanation of reason for incident: (use additional page if necessary)

Upon arrival our crew check the up and downstream manholes and we had greater than normal flow. We rodded with no issue for 425 feet. The owner came out and stated we had caused sludge to blow up through his toilet. The toilet had been removed by a plumber who was on site.

9.

Corrective Action, if any: (use additional page if necessary)

Since there was a plumber on site and the Cities lines was clear and flowing we told Mr. Green we would be back to cctv his line tomorrow, We found his latera came in around the 4:00 position. This is what cause the sludge to be blown back into the toilet.

Name: Chuck Staples

Date: 6/28/19

Title: Superintendent

Phone 913-682-1090



When Completed, E-mail to: cseeds@kdheks.gov
Kansas Department of Health & Environment – Attn: Chris Seeds
Or Mail to: 1000 SW Jackson St., Suite 420, Topeka, KS 66612-1367
Fax 785.296.0086

MAINTENANCE

Alternate lines done in odd months.
Alternate lines highlighted in gray.

7-25-2019

LOCATION	UP/DOWN MH	FOOTAGE	DATE/TIME	FLUSH	ROD	CHECK	CREW	VEHICLE	REASON/PROBLEM
1320 S. 4TH STREET	0619-0627	374							Sags 112' from MH 4207
210 ELM STREET	0614-0613.1	620							MH 0613.1 collects debris
306 S. 3RD STREET	0195-0194	408							Severe sags
100 N. 5TH STREET	0228-0227	828							Sewer smell in city hall
401 DELAWARE STREET	0270-0269.1	391.5							Sags and Grease
914 BROADWAY STREET	0065-0065.1	180							Sags and Grease
744 POTTAWATOMIE	0165.1-0166	1000							Clean downstream flat
8TH & POTTAWATOMIE	0167-0168	200							Sags and Grease
611 N. BROADWAY	0150.2-0150.1	55							Line is Flat
11TH & KIOWA	0125.1-0125	200							Severe sags
1500 PAWNEE STREET	1160-1635	501							Sag 28' East MH 1159
14TH & MIAMI	1291-1290	168							Sags
2049 MARJORIE CIRCLE	1764-1763	144							Sever offset in joints and roots
GRAND AVE & IRONMOULDERS	0436-0436.1	159							Severe Sags
705 SCOTT STREET	0526-0536.2	218							Roots
2109 S. 4TH STREET	0657.2-0657.1	20							Grease buildup
503 SPENCER PLACE	2437-2417-2416	475							Debris buildup in MH 2415
3917 LAKEVIEW DRIVE	1981.2-1981	414.7							Light to medium grease
CODY PARK	1443-1404	114							Creek crossing roots
2019 S. 3RD ANIMAL CONTROL	1895 - clean out	170'							Line flat collects debris

Dukes Root Contract 2019

Project Name: 19-0271

Treated Dates: 03/26/19 - 04/03/19

Report Date: 04/05/19

Job# 19-0271

Feet	Street	Type	Loc	MH	Up	Down	Size	Feet	Guar End
8	SANTA FE STREET	M	A	1730	Up	Down	8	360	03/26/21
8	SANTA FE STREET	M	E	1731	Up	Down	8	354	03/26/21
8	SANTA FE STREET	M	E	1732	Up	Down	8	354	03/26/21
8	SANTA FE STREET	M	E	1748	Up	Down	8	250	03/26/21
8	SANTA FE STREET	M	B	1748	Up	Down	8	250	03/26/21
8	SANTA FE STREET	M	A	0669	Up	Down	8	177	03/26/22
12	STATE STREET	M	S	3002	Up	Down	12	336	03/26/21
8	SHERIDAN STREET	M	E	09371.1	Up	Down	8	425	03/26/21
8	SANTA FE STREET	M	E	0871	Up	Down	8	288	03/27/21
10	SANTA FE STREET	M	E	0870	Up	Down	10	288	03/27/21
10	3RD AVENUE	M	B	1652	Up	Down	10	56	03/27/21
8	4TH AVENUE	M	S	0783	Up	Down	8	238	03/27/21
8	REASER STREET	M	S	0797	Up	Down	8	182	03/27/21
8	REASER STREET	M	S	0796	Up	Down	8	243	03/27/21
8	REASER STREET	M	S	0797	Up	Down	8	215	03/27/22
8	PENNSYLVANIA AV	M	E	0747	Up	Down	8	332	03/27/22
10	MARION STREET	M	S	0906	Up	Down	10	325	03/27/21
12	OSAGE STREET	M	B	0812	Up	Down	12	233	03/27/21
12	OSAGE STREET	M	B	0811	Up	Down	12	62	03/27/21
12	OSAGE STREET	M	E	0701	Up	Down	12	218	03/27/21
12	OSAGE STREET	M	E	0702	Up	Down	12	192	03/27/21
12	OSAGE STREET	M	E	0700	Up	Down	12	300	03/27/21
8	OSAGE STREET	M	S	0815	Up	Down	8	370	03/28/21
12	OTTAWA STREET	M	E	0699.1	Up	Down	12	157	03/28/21
12	OTTAWA STREET	M	E	0699	Up	Down	12	193	03/28/21
12	OTTAWA STREET	M	E	0698.1	Up	Down	12	193	03/28/21
8	14TH STREET	M	B	1799	Up	Down	8	82	03/28/21
8	LIMIT STREET	M	B	1800	Up	Down	8	258	03/28/21
8	KINGMAN STREET	M	E	0467	Up	Down	8	256	03/28/21
8	KINGMAN STREET	M	A	0466.1	Up	Down	8	462	03/28/21
8	SPRING GARDEN S	M	S	0959	Up	Down	8	278	04/02/21
8	HOLMAN STREET	M	B	4221	Up	Down	8	188	04/02/21
8	HOLMAN STREET	M	B	1541	Up	Down	8	181	04/02/21
8	HOLMAN STREET	M	B	1542	Up	Down	8	181	04/02/21
8	HOLMAN STREET	M	B	1541	Up	Down	8	161	04/02/21
8	GRAND AVENUE	M	B	0980	Up	Down	8	337	04/02/21
8	SHERMAN STREET	M	B	0981	Up	Down	8	290	04/02/21
8	SHERMAN STREET	M	E	0982	Up	Down	8	251	04/02/21
8	SHERMAN STREET	M	B	0977	Up	Down	8	295	04/02/22
8	KINGMAN STREET	M	B	0978	Up	Down	8	280	04/02/21
8	KLEMP STREET	M	S	1100	Up	Down	8	336	04/02/21
8	NEWMAN STREET	M	E	1052	Up	Down	8	313	04/02/21
8	18TH STREET	M	E	1229	Up	Down	8	313	04/02/21
8	11TH STREET	M	S	0293	Up	Down	12	130	04/02/21
8	CHEYENNE STREET	M	S	0020	Up	Down	8	151	04/02/21
8	CHEYENNE STREET	M	S	0021.1	Up	Down	8	151	04/02/21
8	45 DEGREE BEND	U			Up	Down	8	30	04/02/21
8	9TH STREET	M	A	0687.2	Up	Down	8	24	04/02/21
8	9TH STREET	M	B	0687.3	Up	Down	8	255	04/02/21
8	9TH STREET	M	S	0688	Up	Down	8	143	04/02/21
8	9TH STREET	M	S	0689	Up	Down	8	225	04/02/21
8	POTTAWATOMIE ST	M	S	0174	Up	Down	8	323	04/02/21
8	10TH STREET	C	A	0025	Up	Down	8	434	04/03/21
8	10TH STREET	M	A	0023	Up	Down	8	360	04/03/21
8	PAWNEE STREET	M	A	0031	Up	Down	8	360	04/03/21
8	PAWNEE STREET	C	A	0031.1	Up	Down	8	304	04/03/21
8	PAWNEE STREET	M	A	0031	Up	Down	8	94	04/03/22
8	PAWNEE STREET	C	A	0031.2	Up	Down	8	91	04/03/21
8	PAWNEE STREET	M	A	1002	Up	Down	8	332	04/03/21
8	PAWNEE STREET	C	B	1002.2	Up	Down	8	77	04/03/21
8	PAWNEE STREET	C	B	1002.1	Up	Down	8	75	04/03/21
8	PAWNEE STREET	M	A	0024	Up	Down	8	317	04/03/21
8	8TH STREET	M	A	0186	Up	Down	8	348	04/03/21
8	16TH STREET	M	E	1163	Up	Down	8	305	04/03/21
8	PAWNEE STREET	M	E	1781	Up	Down	8	253	04/03/21

Project Name: 19-0271	Treated Dates: 03/26/19 - 04/03/19	Report Date: 04/05/19
Job# 19-0271		

Manhole Type Codes:

- C Clean Out
- H House Number
- L Line Number
- M Manhole Number

Manhole Location Codes:

- A Alley
- B Backyard
- E Easement (woods or no building)
- F Front Yard
- I Left Side Yard(when facing front)
- R Right Side Yard(when facing front)
- S Street
- U Unknown

Break Down:
 10 669
 12 1,903
 8 11,465
 Total: 14,037

reated	Street	Type Loc MH	Up Up	Down Down	Type Loc MH	Size Feet	Guar End
04/03/19	PAWNEE STREET	M B 1782	Up Up	Down Down	M F 1781	8 151	04/03/22


2019 - Seven Repairs Completed
Cost \$59,124.90

We greatly appreciate your business and hope that you are satisfied with our work.

TOTAL: \$2,776.18

Description of Work:	
Excavate & repair sewer line at manhole per quote	\$2,776.18

Customer: City of Leavenworth 100 N. 5th Street Leavenworth, KS 66048	Work Address: 1100 Block of Halderman JFD W/O 205105
Phone: 913-682-2182 Fax: 913-682-1437 E-mail: jfd@jdenney.com www.jdenney.com	Work Date: Feb-19

 J.F. Denney PLUMBING & HEATING INC.	Amount Due: \$2,776.18
Invoice #: 205105-1	Customer ID: CTTY38
Invoice Date: February 5, 2019	

PROPOSAL PRICING

Robotically re-open the CIP service [excludes excavation scopes, rehabilitation / cleaning of the lateral, local traffic control only]

LUMP SUM \$2,518.28

March 15, 2019

Pricing is 'Tax Exempt' - requires a TE Certificate

Schedule - Mutually agreed to schedule between City of Leavenworth, KS and ITUSA

INCLUDED:

- Prevailing Wages.
- Bypass pumping of existing mainline flows during our work, if required.
- CD media of internal inspection pre and post Insituform®.
- Local Traffic control at work site [detours, lane drops, etc. - excluded].

EXTRA:

- ADD Performance / Payment Bond, if Required - ADD 1% to Proposal Value
- Special Insurance such as OCP, Builders Risk, Railroad, Non-Contribution, etc.
- Weekend/Holiday Work, if required by others.
- Point Repairs (if required) at obstructions that cannot be removed with conventional sewer cleaning equipment.

Others to provide dump site, haul permits, and associated items for sewer debris disposal. Any toxic waste handling is to be done by others.

General Conditions:

1. Laterals that can be positively identified (with the camera) as plugged will not be reinstated. All other laterals will be opened unless otherwise directed in writing by the owner.

2. To the extent permitted by law and in accordance with the terms of this contract, Contractor shall indemnify and hold harmless the Owner, Architect/Engineer, and agents and employees of any of them from and against claims, damages, losses, and expenses including but not limited to attorneys' fees, arising out of or resulting from the work performed by Contractor, save and except any economic losses not related to bodily injury, sickness, disease or death, provided that such claim, loss or expense is attributable to bodily injury, sickness, disease, or death, or to injury to or destruction of tangible property excluding economic loss or use thereof (other than the work itself), but only to the extent caused in whole or in part by negligent acts or omissions of Contractor, anyone directly or indirectly employed by it or anyone for whose acts Contractor may be liable, regardless of whether or not such claim, damage, loss or expense is caused in part by a party indemnified hereunder.

In claims against any person or entity indemnified under this paragraph by an employee of Contractor, anyone directly or indirectly employed by it or anyone for whose acts Contractor may be liable, the indemnification obligation under this paragraph shall be limited by a limitation on the amount or type of damages, compensation or benefits payable by or for Contractor or its subcontractors under workers' compensation acts, disability benefit acts or other employee benefit acts.

The obligations of Contractor under this paragraph shall not extend to the liability of the Owner, Architect/Engineer, Architect/Engineer's consultants, and agents and employees of any of them arising out of (1) the preparation or approval of maps, drawings, opinions, reports, surveys, change orders, designs or specifications, or (2) the giving of or the failure to give directions or instructions by the Owner.



March 25, 2019

City of Leavenworth
Waste Water Treatment Plant
1800 S. 2nd Street
Leavenworth, KS 66048

Dear Tim,

Thank you for the opportunity to provide you with a solution to repair the line with concrete in
it at 5th Avenue and Doniphan.

Included in this solution:

- Excavate and expose line at location marked on street
- Haul off all spoils
- Replace up to 10' of 8" sewer
- New pipe to be SDR35 PVC
- Make pipe connections with no shear no hub couplings
- Bed and cover new pipe in clean gravel
- Backfill with flowable fill
- Patch road to city specs
- All necessary shoring and barricades
- We have not included sales tax (we will need a Project Sales Tax Exemption Certificate before work can begin)

Total for the above described solution is \$5290.23

This solution is valid for thirty days from March 25, 2019. If you have any questions please don't
hesitate to call, we look forward to the opportunity to serve you.

Sincerely,

Joey Denney

Westland Construction Inc.
 20510 163rd Street
 Basehor, KS 66007
 (913) 724-3191

Bill To
City of Leavenworth, KS Attn: Chuck Staples 100 N. 5th St. Leavenworth, KS 66048

Date	4/4/2019
Invoice #	7670

Invoice

P. O. No.	664 Prospect Point ...
Job Location	
Terms	

Description	Qty	Rate	Amount
664 Prospect 20FT point repair. Repair 20FT of 8" VCP and re-install lateral line. Replace 5FT sidewalk per installation of the pipe. Backfill with compacted AB3.	1	7,750.00	7,750.00

Thank you for your business.

Total	\$7,750.00
Payments/Credits	\$0.00
Balance Due	\$7,750.00



PO Box 272
Leavenworth, KS 66048
Phone: 913-682-2182
Fax: 913-682-1437
E-mail: jfd@jfdenney.com
www.jfdenney.com

Customer: City of Leavenworth
100 N. 5th Street
Leavenworth, KS 66048

Work Address: JFD W/O 206053
919 Parkway Court

Work Date: Apr-19

Amount Due: \$8,667.43
Invoice #: 206053-1
Invoice Date: April 19, 2019
Customer ID: CITY38

Description of Work: Excavate & repair sewer line per quote

\$8,667.43

TOTAL: \$8,667.43

We greatly appreciate your business and hope that you are satisfied with our work.

Westland Construction Inc.
 20510 163rd Street
 Basehor, KS 66007
 (913) 724-3191

Date	4/23/2019
Invoice #	7758

Bill To	City of Leavenworth, KS Attn: Chuck Staples 100 N. 5th St. Leavenworth, KS 66048
---------	---

P.O. No.	Job Location	Terms
	613 Dakota St	

Description	Qty	Rate	Amount
Emergency Point Repair including service line replacement for 613 Dakota Street. Length of repair was 20'6". 1 four inch sanitary sewer service. 16ft depth. Spoils removed and hole back filled with AB3.	1	12,000.00	12,000.00

*Completed
 4-23-19*

Thank you for your business.

Total	\$12,000.00
Payments/Credits	\$0.00
Balance Due	\$12,000.00

Invoice

Westland Construction Inc.
 20510 163rd Street
 Basehor, KS 66007
 (913) 724-3191

Bill To
 City of Leavenworth, KS
 Attn: Chuck Staples
 100 N. 5th St.
 Leavenworth, KS 66048

Date	6/14/2019
Invoice #	7905

Invoice

P.O. No.	10" Force Main
Job Location	5151 4th Street
Terms	

Description	Qty	Rate	Amount
Emergency 10" force main repair at 5151 4th Street. Labor, equipment and material included.	1	20,122.78	20,122.78

Total	\$20,122.78
Payments/Credits	50.00
Balance Due	\$20,122.78

Thank you for your business.

copy

TRAINING 1ST HALF

Simple CPR 1/17/2019	Joe Kowaleski	Darrin Manna	Ryon Karpierz	Acuity Lighting 1/17/2019 Jackie Tyson	Jonathan Oney	Mike Copeland	Tim Guardado	Kaleb Ketchum	Darrin Manna	Reggie Williams	Sam Harrison	Chuck Staples	Leadership, team-building and coaching skills	Fred Pryor Seminar's 1/24/2019	Reggie Williams	Operation of Wastewater treatment plants, Vol II	California state University, Sacramento	January 19
Simple CPR 5/19	Samuel Harrison	Operation of Wastewater treatment plants, Vol II	California state University, Sacramento	May 19	Patrick Fumaono	Operation of Wastewater treatment plants, Vol II	California state University, Sacramento	January 19	Jon Lemke	Bo Brown	Reggie Williams	Sam Harrison	Gerald Wistoff II	Truckers Against Trafficking	4/29/2019	Jon Lemke		



Darrin Manna

Promotions

Darrin Manna

Wastewater Collections System

Certifications Received

Operator II

Collections II

KWEA

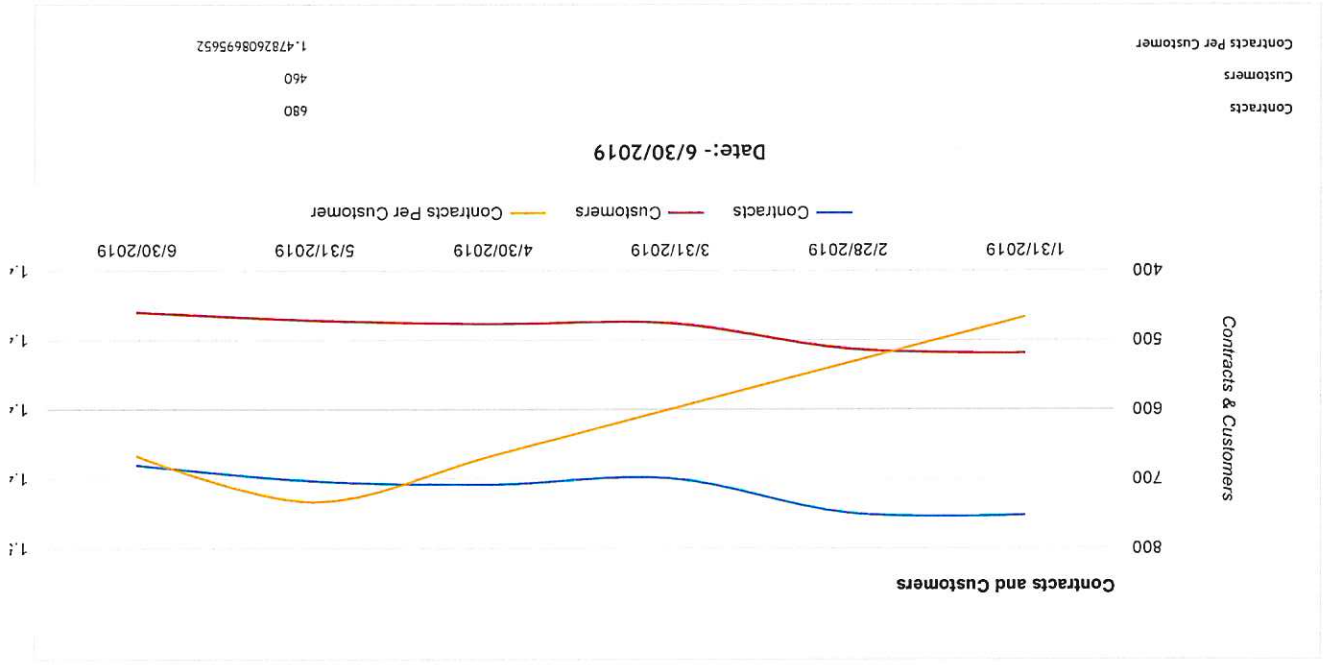
February 14, 2019

TRAINING 1ST HALF



Logout

Partner Reporting Dashboard

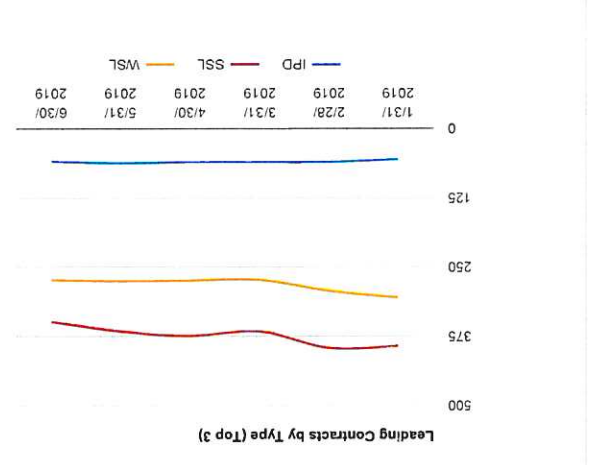


Date: - 6/30/2019

IPD	59
SSL	348
WSL	273

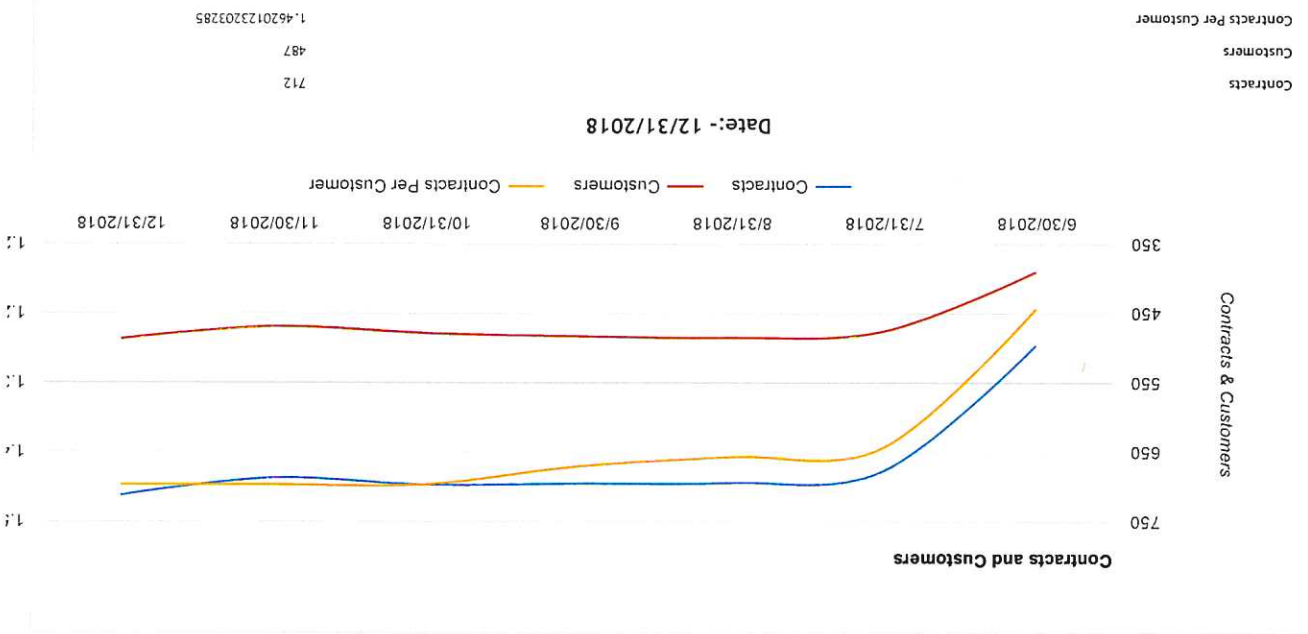
6-30-2019

SSL = 5PA. Sewer Line = 348





Logout



Date: - 12/31/2018

IPD	55
SSL	344
WSL	313

SSL = SAN SEWER LINE
12/31/2018 = 344

