



Sent via e-mail

January 8, 2021

Cynthia Sans  
U.S. Environmental Protection Agency – Region 7  
Water, Wetlands and Pesticides Division  
11201 Renner Boulevard  
Lenexa, KS 66219  
[sans.cynthia@epa.gov](mailto:sans.cynthia@epa.gov)

RE: SSO Order of Compliance – Docket No. CWA-07-2015-0022  
Compliance Actions – City of Leavenworth  
**Timeframe: July 1, 2020 - December 31, 2020**

Ms. Sans:

Pursuant to Paragraphs 37 and 38 of the Order of Compliance on Consent, Docket No. CWA-07-2015-0022, the City of Leavenworth, Kansas is providing the following:

**Paragraph 37.** Attached is a listing of SSO “Transparency Report” notifications on the City of Leavenworth webpage at [www.leavenworthks.org](http://www.leavenworthks.org). These are related to SSO events that reached the Waters of the United States. Additional notifications of these events were made by the City Public Information Officer (PIO) via Social Media and on the City’s webpage at [www.leavenworthks.org](http://www.leavenworthks.org).

There were 4 SSO events that reached the Waters of the United States between July 1, 2020 and December 31, 2020. A summary of each event is below.

- 1. On July 9, 2020 at 10:30 a.m., a concerned citizen called in to report a manhole leaking at 725 Kiowa Street. Water Pollution Control employees responded and an overflow was discovered at a manhole next to a storm drain. Further investigation revealed the City’s main line was blocked with rags and grease. The crew cleared the blockage which stopped the overflow at 11:15 a.m. Crews also cleaned and pumped the creek into the nearest sanitary sewer manhole. After cleaning, crews took E-coli samples of the creek. Signs that read “Creek Contaminated” and “Notice: Stay Out of the Creek” were placed at the creek in the 700 block of Kickapoo. E-coli samples were taken and a follow-up inspection conducted.*
- 2. On November 12, 2020 at 10:30 a.m., City crews checking lift stations noticed a manhole (1590) overflowing next to the Select Lift Station at 4808 Brewer Place. The City crew found the overflow running into a stream that runs into 7-Mile Creek. Further investigation revealed the City’s main was blocked with grease. City crews cleared the grease from the main which stopped the overflow at 9:15 a.m. City of Leavenworth crews cleaned the area. Signs that read “Creek Contaminated” and “Notice: Stay Out of the Creek” were placed at the creek. The*

City asked that all residents stay out of the creek until E-coli tests come back at an acceptable limit set by KDHE. City of Lansing Water Pollution Control was notified.

3. On December 8, 2020 at 3:30 p.m., City crews got a call about a sewer smell in the area of 101 S. 4th Street. City crews followed up on the call and found a sanitary sewer manhole overflowing into a storm archway. The storm archway flows under 4th Street where it drops into 3-Mile Creek. Further investigation revealed rags were blocking the City's main. City crews cleared the rags which stopped the overflow at 5:35 p.m. City crews have cleaned the overflow area. "Creek-Contaminated" signs were placed near the area of the spill. Additionally, the City asked all residents stay out of 3-Mile Creek from 4th Street to 2nd Street until the E-coli tests come back at an acceptable limit set by KDHE.
4. On December 18, 2020, at 10:10 a.m. City crews got a call about sewage backing into the street in the area of 407 Maple Street. City crews following up on the call found sewage running from a private lateral. The sewage ran from the lateral down the street and into a City storm drain. City crews advised owner to repair private problem. Homeowner cleared his line Saturday, December 19, 2020. City crews have cleaned the overflow area. Signs that read "Creek Contaminated" and "Notice: Stay Out of the Creek" were placed at the creek. The City asked that all residents stay out of the creek until E-coli tests come back at an acceptable limit set by KDHE.

A copy of the transparency reports related to these 4 events is attached. The transparency reports are available for viewing on the City webpage at [www.leavenworthks.org](http://www.leavenworthks.org).

**Paragraph 38.** Describe actions taken by the City between July 1, 2020 and December 31, 2020 to comply with this order, and attach copies of all SSO reports submitted to KDHE.

(a.) The number of unauthorized discharges which occur within the City's POTW (Publicly-Owned Treatment Works) during the reporting period:

16 SSO events occurred during this period and were reported to KDHE. A report showing each event and resolution of the event is included with this letter.

- **8 Private-Line Events.** 1 event reached the Waters of the United States.
  - 0 events from contractor actions
  - 8 events were not related to contractor actions
- **7 City-Line Events.** 3 reached the Waters of the United States.
  - 7 events were in City lines
  - 0 events were at the wastewater treatment facility
  - 1 event was from contractor actions
  - 6 events were not related to contractor actions
- **1 Fort Leavenworth Event** was reported to KDHE by American Water. It is unknown if any discharge from this event reached the Waters of the United States. A copy of the report is included. **(The City of Leavenworth has no jurisdiction on Fort Leavenworth even though it is inside the City limits.)**
  - 0 events were from contractor actions

- 1 event was not related to contractor actions
- 0 USP Leavenworth (Bureau of Prisons) SSO Events were reported to KDHE. It is unknown if USP Leavenworth had overflows that were not reported. (The City of Leavenworth has no jurisdiction on USP Leavenworth even though it is inside the City limits.)

(b.) The specific measures taken by the City to correct and prevent recurrence of each unauthorized discharge which occurred within the City's POTW during the reporting period:

The City and residents have taken the actions as noted in the summary report related to Paragraph 38, section (a) above. In addition to those efforts, the following work occurred in the reporting period:

1. City continues to operate a CCTV crew. 4.3 miles were inspected during the reporting period for a total of 8.7 miles in 2020.
2. City continues to operate a cleaning and root elimination crew. 14.0 miles were cleaned during the reporting period for a total of 44.7 miles in 2020.
3. City inspected the results of root control operations performed in 2020. 5 areas were identified for warranty work and retreated. A new root control project was not completed in this reporting period.
4. City continues to operate a grease trap inspection program. Letters are sent to selected relevant businesses periodically and all known owners are contacted at least one time each year to request copies of their maintenance records. The City has identified 73 grease trap locations in both open and closed businesses. Physical inspections have been completed in 5 grease trap installations during the reporting period. 0 new installations were completed and 2 businesses closed during the reporting period. Currently there are no known businesses that are noncompliant.

The City continues to review and look at updates for the Grease Trap Program. Recommendations for the creation of fees and enforcement actions in the form of fines and/or the disconnection of water or sewer service were reviewed by the City Commission on November 17, 2020. Final revisions will be reviewed with the Commission and are expected to be adopted in early 2021.

5. Construction plans for the 2020 Sewer Inflow and Infiltration (I&I) Project have been completed. The occurrence of the COVID-19 Pandemic has resulted in the 2020 I&I Project being placed on hold until 2021 with smaller more localized issues being the focus of repairs in 2020.

9 projects for manhole replacement or sewer line repairs totaling \$89,194.87 were awarded and completed during the reporting period.

6. City efforts related to retention of employees have resulted in the following during the reporting period:
  - a. 3 employees separated from WPC during the reporting period. 2 new employees were hired, and 0 employees were promoted. The Assistant Superintendent's position and one operator position are currently vacant at the end of this reporting period.
  - b. Training and education opportunities are available for all operators to include in-house, formal training, and three California correspondence courses. All KDHE-certified operators are current in their requirements.
    - 13 employees attended the **Active Shooter** training
    - 4 employees attended the **Small System Wastewater** training
    - 2 employees attended the **Defensive Driving Course**
    - 5 employees attended the **Being Better Prepared for the Next Emergency** training
    - 2 employees took the **Wastewater Certificate Preparation** training
    - 1 employee passed the **KDHE Class I** training
    - 1 employee passed the **KDHE Class IV** training
7. 2 cycles of creek-crossing inspections have occurred in the reporting period with 0 issues noted during this reporting period. Creek crossing inspections were completed in October and December of this year.

0 contracts for creek crossing repairs were necessary

The 3000 Lakeview Sewer Project will replace a private service line connection, replace approximately 50' of sewer main, and stabilize 2 sanitary sewer main creek crossings at an estimated cost of \$100,000 to be constructed in 2021.

The Cody Park Sewer Crossing & Bank Stabilization Project was a result of the quarterly inspections. The project included the replacement of an aerial sewer crossing support column and the stabilization of a creek bank where erosion threatened the stability of a sewer main. The project was completed on September 30, 2020. Cost of the project was \$200,200.

8. The "Trouble Line" list continues to be investigated by City staff. These lines are subjected to additional routine cleaning or inspection on approximately a monthly basis due to previous situations. 21 lines are on the "Trouble Line" list which includes 1 new line added during this reporting period.
9. City has contracted with Service Line Warranties of America to provide an affordable repair option for all residential sewer lines (private lines). This optional program began in January 2017. Records indicate that 11 new contracts of all types occurred during the reporting period of July 1, 2020 to December 31, 2020. The program currently has 325 residential structures under contract for Sanitary Sewer Line warranty. This is an increase from 319 at the end of the previous period.
10. City Community Development Block Grant (CDBG) funds may be used to fund homeowner private sewer line repair or water line repair up to a maximum cap of \$5,000 depending on income qualifications.



- In October 2020, design was completed for the 4th & Olive Alley CDBG Sanitary Sewer Project (City Project No. 2020-938) which consists of removal of an existing private sewer line running down an alley, constructing a public sanitary sewer main, and connecting nine properties.
- The project was bid in December 2020.
- The project will be constructed beginning in January 2021.

There were 0 CDBG sewer line repairs during the reporting period.

11. City Housing Trust Fund (HTF) resources may be used to assist homeowner private sewer line repair or water line repair up to a maximum cap of \$5,000 depending on income qualifications. There were 0 HTF sewer line repairs during the reporting period.
12. In early 2018, the City of Leavenworth and City of Lansing signed a Memorandum of Understanding related to use of City of Lansing facilities for disposing of solids from the Vactor truck. The Memorandum of Understanding between the two cities remains in place. Staff used the Lansing facility to dispose of solids 3 times during this reporting period.
13. The City evaluates all SSOs related to contractor actions. There was 1 City-related SSO involving contractor actions during the reporting period. 0 SSOs related to contractor actions occurred at Fort Leavenworth and USP Leavenworth (Bureau of Prisons) during this reporting period. The need for situational awareness has been stressed to City inspectors and the contractors.

(c.) A copy of each unauthorized discharge report submitted to KDHE: Copies of 16 KDHE SSO reports are attached to this letter. This includes 1 event on Fort Leavenworth.

If you have any questions or need additional documentation, please don't hesitate to contact me at 913-684-0375 or by email at [mmcdonald@firstcity.org](mailto:mmcdonald@firstcity.org).

Sincerely,



Michael G. McDonald, P.E.,  
Director of Public Works

cc: Paul Kramer, City Manager  
Tom Stiles, Director, Bureau of Water, KDHE (sent via U.S. mail)  
Brittany A. Barrientos, Attorney

#### Attachments

- Screenshots of on-line Transparency Report with details of the 4 events
- Spreadsheet with summary of 16 SSO events with dates and corrective actions
- KDHE SSO reports (16 events)
- Listing of 21 "Trouble Lines" currently receiving enhanced maintenance
- Summary sheet and email from Service Line Warranties of America program.

**CITY OF LEAVENWORTH**  
**EPA 2ND HALF OF 2020 REPORT - SUMMARY OF ATTACHMENTS**  
**JULY 1 - DECEMBER 31**

Event	Amount
Sanitary Sewer Overflows	15
Transparency Reports	4
Sanitary Lines Repaired by WPC	9
Lines (Miles) Cleaned	11.9
Lines (Miles) CCTV'd	4.3
Maintenance Line List	21
Employees Trained	28
Employees Departed since July	3
Employees Hired since July	2
Use of Inter-Local Agreement with Lansing	3



# PUBLIC WORKS

## 2020 Sanitary Sewer Overflow Transparency Reports

TRASH AND RECYCLING	
KDHE ANNUAL STORMWATER REPORTS	+
SNOW AND ICE POLICY MANUAL	
INSPECTIONS AND PERMITS DIVISION	+
STORMWATER PROJECTS	
STREET MAINTENANCE	+
BRUSH SITE	
WATER POLLUTION CONTROL	-
Sanitary Sewer Overflow Transparency Reports	
2020 Sanitary Sewer Overflow Transparency Reports	



Sanitary Sewer Overflow at 407 Olive St. on April 6 2020



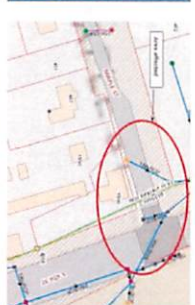
Sanitary Sewer Overflow for July 9, 2020



Sanitary Sewer Overflow for May 27, 2020



Sanitary Sewer Overflow at 4808 Brewer Place



Sanitary Sewer Overflow Dec. 18 2020

Sanitary Sewer Overflow for Dec. 8, 2020

### CONTACT INFORMATION

Water Pollution Control - 24-Hour Sewer Emergency Line: 913-682-1090

Hours: 7:30 a.m. - 4:00 p.m.  
Monday - Friday  
Location: 1800 S. 2nd Street,  
Leavenworth, KS 66048

Public Works: 913-684-0375

[View Full Contact Details](#)

Share/Save through Social Media







## PUBLIC WORKS

[View](#) [Edit](#) [Revisions](#) [Clone content](#)

### Sanitary Sewer Overflow for July 9, 2020

On July 9, 2020 at 10:30 am, a concerned citizen called in to report a manhole leaking at 725 Kiowa Street.

Water Pollution Control employees responded and an overflow was discovered at a manhole next to a storm drain.

Further investigation revealed the City's main line was blocked with rogs and grease. The crew cleared the blockage, which stopped the overflow at 11:15 am. Crews also cleaned and pumped the creek into the nearest sanitary sewer manhole. After cleaning, the crews took E-coli samples of the creek. Signs that read "Creek Contaminated" and "Notice: Stay out of the Creek" were placed at the creek in the 700 block of Kickapoo. Citizens should stay out of the creek until the signs are removed. E-coli samples will be taken and a follow-up inspection will be conducted.



### CONTACT INFORMATION

Water Pollution Control - 24-Hour  
Sewer Emergency Line: 913-682-1090

Hours: 7:30 a.m. - 4:00 p.m.  
Monday - Friday  
Location: 1800 S. 2nd Street,  
Leavenworth, KS 66048

**Public Works: 913-684-0375**

[Edit Contact Details](#)

[View Full Contact Details](#)

INSPECTIONS AND PERMITS DIVISION	+
TRASH AND RECYCLING	
KDHE ANNUAL STORMWATER REPORTS	+
SNOW AND ICE POLICY MANUAL	
STORMWATER PROJECTS	
STREET MAINTENANCE	+
BRUSH SITE	
WATER POLLUTION CONTROL	-

Sanitary Sewer Overflow  
Transparency Reports

[Share/Save through Social Media](#)





[View](#) [Edit](#) [Revisions](#) [Clone content](#)

## PUBLIC WORKS

INSPECTIONS AND PERMITS DIVISION	+
TRASH AND RECYCLING	
KDHE ANNUAL STORMWATER REPORTS	+
SNOW AND ICE POLICY MANUAL	
STORMWATER PROJECTS	
STREET MAINTENANCE	+
BRUSH SITE	
WATER POLLUTION CONTROL	-
Sanitary Sewer Overflow Transparency Reports	-

## Sanitary Sewer Overflow at 4808 Brewer Place

4808 Brewer Place Transparency Report  
Posted 2:10 p.m. Nov. 13

At 8:20 a.m. November 12, 2020, City crews checking lift stations noticed manhole cover No. 1590 overflowing next to 4808 Brewer Place. Crews found the overflow running into a stream that runs into 7-Mile Creek. Further investigation revealed the City's main was blocked with grease. City crews cleared the grease from the main, which stopped the overflow at 9:15 a.m. City crews are cleaning the area. Residents are asked to stay out of the creek until E-Coli tests come back at limits acceptable by the Kansas Department of Health and Environment. Lansing's Water Pollution Control staff have been notified.

4808 Brewer Place  
Sewer Overflow  
November 13, 2020



Share/Save through Social Media



## CONTACT INFORMATION

**Water Pollution Control - 24-Hour Sewer Emergency Line: 913-682-1090**

Hours: 7:30 a.m. - 4:00 p.m.  
Monday - Friday  
Location: 1800 S. 2nd Street,  
Leavenworth, KS 66048

**Public Works: 913-684-0375**

[Edit Contact Details](#)

[View Full Contact Details](#)



## PUBLIC WORKS

INSPECTIONS AND PERMITS DIVISION	+
TRASH AND RECYCLING	
KDHE ANNUAL STORMWATER REPORTS	+
SNOW AND ICE POLICY MANUAL	
STORMWATER PROJECTS	
STREET MAINTENANCE	+
BRUSH SITE	
WATER POLLUTION CONTROL	-
<b>Sanitary Sewer Overflow</b>	

[View](#) [Edit](#) [Revisions](#) [Clone content](#)

### Sanitary Sewer Overflow for Dec. 8, 2020

On December 8, 2020, at 3:30 p.m. City crews got a call of a sewer smell in the area of 101 S. 4th Street. City crews followed up on the call and found a sanitary sewer manhole overflowing into a storm archway. The storm archway flows under 4th Street where it drops into Three-Mile Creek. Further investigation revealed rags were blocking the City's main. City crews cleared the rags, which stopped the overflow at 5:35 p.m. City crews have cleaned the overflow area. Creek-contaminated signs have been installed near the area of the spill. Additionally, the City is asking that all residents stay out of Three-Mile Creek from 4th Street to 2nd Street until E. coli tests come back at an acceptable limit set by KDHE

#### Supporting Documents

Overflow Location - 101 S. 4th Street (492 KB)

Share/Save through Social Media



### CONTACT INFORMATION

**Water Pollution Control - 24-Hour  
Sewer Emergency Line: 913-682-1090**

Hours: 7:30 a.m. - 4:00 p.m.  
Monday - Friday  
Location: 1800 S. 2nd Street,  
Leavenworth, KS 66048

**Public Works: 913-684-0375**

[Edit Contact Details](#)

[View Full Contact Details](#)



# Overflow Location - 101 S. 4th Street







[View](#) [Edit](#) [Revisions](#) [Clone content](#)

## PUBLIC WORKS

INSPECTIONS AND PERMITS DIVISION	+
TRASH AND RECYCLING	
KDHE ANNUAL STORMWATER REPORTS	+
SNOW AND ICE POLICY MANUAL	
STORMWATER PROJECTS	
STREET MAINTENANCE	+
BRUSH SITE	
WATER POLLUTION CONTROL	-
<b>Sanitary Sewer Overflow Transparency Reports</b>	

### Sanitary Sewer Overflow Dec. 18 2020

On December 18, 2020, at 10:10 a.m. Wastewater Treatment Plant crews got a call about sewage backing into the street in the area of **407 Maple Street**. City crews following up on the call found sewage running from a private lateral sewer line. The sewage ran from the line down the street and into a City storm drain. City crews advised the owner to repair the private problem. Homeowner cleared the line on Saturday, December 19, 2020. City crews have cleaned the overflow area.

Please call if you suspect a sewage problem immediately. We are available 24 hours a day, 7 days a week, 913-682-1090.



Share/Save through Social Media



### CONTACT INFORMATION

**Water Pollution Control - 24-Hour Sewer Emergency Line: 913-682-1090**

Hours: 7:30 a.m. - 4:00 p.m.  
Monday - Friday  
Location: 1800 S. 2nd Street,  
Leavenworth, KS 66048

**Public Works: 913-684-0375**

[Edit Contact Details](#)

[View Full Contact Details](#)

## City of Leavenworth SSO Summary

Water Treatment Plant - July 1, 2020 to December 31, 2020

No.	Date	Address	Nature of Problem	SSO	Problem	Transparency Report	Cause	Solution
1	7.9.20	725 Kiowa, Apt. B	MH overflowing in alley between Kiowa & Kickapoo Streets	Y	CLT	Yes	City line blocked rags & grease	City crews cleaned line
2	7.22.20	1305 6th Avenue	Water coming out of cleanout	Y	PLT	No	Private line blocked	Had plumber repair line
3	7.31.20	320 S. 2nd	Sewage backing up in floor drains	Y	PLT	No	Private line collapsed	Plumber repaired line
4	8.8.20	728 Ottawa	There is sewage backed up into back yards	Y	CLT	No	City line blocked with grease	City crews cleaned line
5	9.2.20	616 Kickapoo Street	Plumber on site; back up in trench	Y	CLT	No	City line collapsed	City had plumber repair city main
6	9.27.20	217 N. Broadway	Back up in the sewage system	Y	PLT	No	Roots in private line	Plumber cleared roots from private line
7	10.5.20	1112 S. Broadway	Sewer smell / dark water on ground	Y	PLT	No	private lateral blocked	Plumber cleared private lateral
8	10.23.20	312 S. 10th Street	Raw sewage flowing into alley	Y	PLT	No	Private line in crawl space broken	Had plumber repair private line
9	10.26.20	616 Kickapoo Street	Private line was blocked	Y	PLT	No	Private line blocked	Private line cleared by plumber
10	11.8.20	1510 Pawnee Street	Contractor caused dropped concrete in City main	Y	CLT	No	City line blocked	Contractor dropped concrete in manhole. Contractor removed concrete
11	11.12.20	4808 Brewer Place	Sewage from manhole	Y	LS	Yes	City line blocked with grease	City crews removed grease and cleaned area
12	11.12.20	FLVN Riverside Lift Station	Lift station overloaded	Y	FLVN	No	Lift station alarms not working	Area cleaned repairs made
13	11.23.20	407 Maple Street	Sewage from cleanout	Y	PLT	No	Private line blocked	Property owner repaired
14	12.8.20	101 S. 4th Street	Sewer smell in area	Y	CLT	Yes	City line blocked with rags	City crews cleared line
15	12.9.20	219 N. Esplanade	City line collapsed	Y	CLT	No	City line collapsed	Collapsed repaired
16	12.30.20	1120 Pawnee Street	Private line blocked	Y	PLT	No	City line blocked	City crews cleaned private line out

SSOs	16
City Line (CTL) Overflows	6
Private Line (PLT) Overflows	8
Fort Leavenworth (FLVN)	1
Water Pollution Control (Plant)	0
Lift Station (LS)	1



# SANITARY SEWER OVERFLOWS

JULY 2020





**KANSAS DEPARTMENT OF HEALTH AND ENVIRONMENT  
WASTEWATER INCIDENT REPORT FORM**

Definitions are available at <http://www.kdheks.gov/water/tech.html>

Collection System Bypass  In-Plant Diversion  Upset  In-Plant Flow Through  Spill

1. FACILITY NAME: Leavenworth, City of Kansas Permit # M-MO12-IO01  
2. Within 24 hours of discovery, notify the KDHE Central Office (email – [chris.seeds@ks.gov](mailto:chris.seeds@ks.gov)), (fax 785.296.0086), (telephone 785.296.5517) or your local KDHE district office. Written notification is required within 5 days of discovery. If the incident is not corrected within 5 days, send a written notification to KDHE indicating the status. This form is to be sent to KDHE when the incident ends.

KDHE Person Contacted: Chris Seeds Date: 7.9.2020 Time: 3:12 pm

3. Date Incident Discovered: 7.9.2020 Time: 10:24 am  
4. Date Incident Ended: 7.9.2020 Time: 11:15 pm  
5. Total estimated gallons bypassed, spilled, or routed through failed equipment for all locations on this form: 1,500 gallons  
6. If rainfall induced event, approximate inches of rainfall n/a

If multiple locations listed below due to rain event, check here

7. Incident Location: (check all that apply)

- |  |  |
|--|--|
| <input type="checkbox"/> Plant                 | <input type="checkbox"/> City Collection Line (Line Break / Joint) |
| <input type="checkbox"/> Lift/Pump Station     | <input type="checkbox"/> Private Sewer Line                        |
| <input type="checkbox"/> Peak Flow Basin       | <input type="checkbox"/> Basement                                  |
| <input checked="" type="checkbox"/> Manhole(s) | <input type="checkbox"/> Other (specify below)                     |

Identify **All** Incident Locations by Name, Street Address or Manhole Number as appropriate.

725 Kiowa St. sewage was running out of manhole #0112.3. this ran into a storm drain and into a Branch that runs into 3 mile creek.

8. Cause of Incident:

- |   |  |
|---|--|
| <input type="checkbox"/> Intentional Bypass for Repair/Construction | <input type="checkbox"/> Equipment Failure           |
| <input type="checkbox"/> Excessive Rainfall, Snow Melt              | <input type="checkbox"/> Control System Failure      |
| <input type="checkbox"/> Unplanned Construction Related Break       | <input type="checkbox"/> Power Related Failure       |
| <input type="checkbox"/> City Line Break (Not Construction Related) | <input type="checkbox"/> Operations Related Failure  |
| <input checked="" type="checkbox"/> City Line Blockage              | <input type="checkbox"/> Maintenance Related Failure |
| <input type="checkbox"/> Private Line Break                         | <input type="checkbox"/> Vandalism                   |
| <input type="checkbox"/> Private Line Blockage                      | <input type="checkbox"/> Other                       |
| <input type="checkbox"/> Lagoon High Level                          |  |

Additional explanation of reason for Incident: (use additional page if necessary)

City line was partially blocked.

9. Corrective Action, if any: (use additional page if necessary)

City crews used jet truck to remove blockage. Removed rags and grease from line. City crews also cleaned creek and pump sewage back into a sanitary manhole 0151. Report added to city website.

Name: Tim Guardado Date: 7.10.2020

Title: Superintendent Phone: 913-682-1090

When Completed, E-mail to: [chris.seeds@ks.gov](mailto:chris.seeds@ks.gov)

Kansas Department of Health & Environment – Attn: Chris Seeds

Or Mail to: 1000 SW Jackson St., Suite 420, Topeka, KS 66612-1367

Fax 785.296.0086

**KANSAS DEPARTMENT OF HEALTH AND ENVIRONMENT  
WASTEWATER INCIDENT REPORT FORM**

Definitions are available at <http://www.kdheks.gov/water/tech.html>

Collection System Bypass  In-Plant Diversion  Upset  In-Plant Flow Through  Spill

1. FACILITY NAME: Leavenworth, City of Kansas Permit # M-MO12-IO01  
2. Within 24 hours of discovery, notify the KDHE Central Office (email – [chris.seeds@ks.gov](mailto:chris.seeds@ks.gov)), (fax 785.296.0086), (telephone 785.296.5517) or your local KDHE district office. Written notification is required within 5 days of discovery. If the incident is not corrected within 5 days, send a written notification to KDHE indicating the status. This form is to be sent to KDHE when the incident ends.

KDHE Person Contacted: Chris Seeds Date: 7.22.2020 Time: 2:45 pm

3. Date Incident Discovered: 7.22.2020 Time: 1:45 pm  
4. Date Incident Ended: 7.22.2020 Time: 2:15 pm  
5. Total estimated gallons bypassed, spilled, or routed through failed equipment for all locations on this form: 5 gallons  
6. If rainfall induced event, approximate inches of rainfall n/a

If multiple locations listed below due to rain event, check here

7. Incident Location: (check all that apply)

- |  |  |
|--|--|
| <input type="checkbox"/> Plant             | <input type="checkbox"/> City Collection Line (Line Break / Joint) |
| <input type="checkbox"/> Lift/Pump Station | <input type="checkbox"/> Private Sewer Line                        |
| <input type="checkbox"/> Peak Flow Basin   | <input type="checkbox"/> Basement                                  |
| <input type="checkbox"/> Manhole(s)        | <input checked="" type="checkbox"/> Other (specify below)          |

Identify **All** Incident Locations by Name, Street Address or Manhole Number as appropriate.

1305 6<sup>th</sup> Ave Out of cleanout for house in backyard along back of house

8. Cause of Incident:

- |   |  |
|---|--|
| <input type="checkbox"/> Intentional Bypass for Repair/Construction | <input type="checkbox"/> Equipment Failure           |
| <input type="checkbox"/> Excessive Rainfall, Snow Melt              | <input type="checkbox"/> Control System Failure      |
| <input type="checkbox"/> Unplanned Construction Related Break       | <input type="checkbox"/> Power Related Failure       |
| <input type="checkbox"/> City Line Break (Not Construction Related) | <input type="checkbox"/> Operations Related Failure  |
| <input type="checkbox"/> City Line Blockage                         | <input type="checkbox"/> Maintenance Related Failure |
| <input checked="" type="checkbox"/> Private Line Break              | <input type="checkbox"/> Vandalism                   |
| <input type="checkbox"/> Private Line Blockage                      | <input type="checkbox"/> Other                       |
| <input type="checkbox"/> Lagoon High Level                          |  |

Additional explanation of reason for Incident: (use additional page if necessary)

Private line had collapsed

9. Corrective Action, if any: (use additional page if necessary)

Homeowner had plumber JF Denney repair break. City crews put lime down around spill. No solids just liquid.

Name: Tim Guardado Date: 7.23.2020

Title: Superintendent Phone: 913-682-1090

When Completed, E-mail to: [chris.seeds@ks.gov](mailto:chris.seeds@ks.gov)

Kansas Department of Health & Environment – Attn: Chris Seeds

Or Mail to: 1000 SW Jackson St., Suite 420, Topeka , KS 66612-1367

Fax 785.296.0086

**KANSAS DEPARTMENT OF HEALTH AND ENVIRONMENT  
WASTEWATER INCIDENT REPORT FORM**

Definitions are available at <http://www.kdheks.gov/water/tech.html>

Collection System Bypass  In-Plant Diversion  Upset  In-Plant Flow Through  Spill

1. FACILITY NAME: Leavenworth, City of Kansas Permit # M-MO12-IO01  
2. Within 24 hours of discovery, notify the KDHE Central Office (email – [chris.seeds@ks.gov](mailto:chris.seeds@ks.gov)), (fax 785.296.0086), (telephone 785.296.5517) or your local KDHE district office. Written notification is required within 5 days of discovery. If the incident is not corrected within 5 days, send a written notification to KDHE indicating the status. This form is to be sent to KDHE when the incident ends.

KDHE Person Contacted: Chris Seeds Date: 7.31.2020 Time: 3:07 pm

3. Date Incident Discovered: 7/31/2020 Time: 2:37 pm  
4. Date Incident Ended: 7/31/2020 Time: 3:05 pm  
5. Total estimated gallons bypassed, spilled, or routed through failed equipment for all locations on this form: 50 Gallons  
6. If rainfall induced event, approximate inches of rainfall n/a

If multiple locations listed below due to rain event, check here

7. Incident Location: (check all that apply)
- |  |  |
|--|--|
| <input type="checkbox"/> Plant             | <input type="checkbox"/> City Collection Line (Line Break / Joint) |
| <input type="checkbox"/> Lift/Pump Station | <input type="checkbox"/> Private Sewer Line                        |
| <input type="checkbox"/> Peak Flow Basin   | <input checked="" type="checkbox"/> Basement                       |
| <input type="checkbox"/> Manhole(s)        | <input type="checkbox"/> Other (specify below)                     |

Identify **All** Incident Locations by Name, Street Address or Manhole Number as appropriate.  
320 S 2<sup>nd</sup> St Choctaw Loft Apartments. Sewage flooded the basement.

8. Cause of Incident:
- |   |  |
|---|--|
| <input type="checkbox"/> Intentional Bypass for Repair/Construction | <input type="checkbox"/> Equipment Failure           |
| <input type="checkbox"/> Excessive Rainfall, Snow Melt              | <input type="checkbox"/> Control System Failure      |
| <input type="checkbox"/> Unplanned Construction Related Break       | <input type="checkbox"/> Power Related Failure       |
| <input type="checkbox"/> City Line Break (Not Construction Related) | <input type="checkbox"/> Operations Related Failure  |
| <input type="checkbox"/> City Line Blockage                         | <input type="checkbox"/> Maintenance Related Failure |
| <input checked="" type="checkbox"/> Private Line Break              | <input type="checkbox"/> Vandalism                   |
| <input type="checkbox"/> Private Line Blockage                      | <input type="checkbox"/> Other                       |
| <input type="checkbox"/> Lagoon High Level                          |  |

Additional explanation of reason for Incident: (use additional page if necessary)  
Private line had collapsed.

9. Corrective Action, if any: (use additional page if necessary)  
Owner had JF Denney plumber come out and repair lateral from building to main.

Name: Tim Guardado Date: 8.6.2020  
Title: Superintendent Phone: 913-682-1090

When Completed, E-mail to: [chris.seeds@ks.gov](mailto:chris.seeds@ks.gov)  
Kansas Department of Health & Environment – Attn: Chris Seeds  
Or Mail to: 1000 SW Jackson St., Suite 420, Topeka, KS 66612-1367  
Fax 785.296.0086





# SANITARY SEWER OVERFLOWS

AUGUST 2020



**KANSAS DEPARTMENT OF HEALTH AND ENVIRONMENT  
WASTEWATER INCIDENT REPORT FORM**

Definitions are available at <http://www.kdheks.gov/water/tech.html>

Collection System Bypass  In-Plant Diversion  Upset  In-Plant Flow Through  Spill

1. FACILITY NAME: Leavenworth, City of Kansas Permit # M-MO12-IO01  
2. Within 24 hours of discovery, notify the KDHE Central Office (email – [chris.seeds@ks.gov](mailto:chris.seeds@ks.gov)), (fax 785.296.0086), (telephone 785.296.5517) or your local KDHE district office. Written notification is required within 5 days of discovery. If the incident is not corrected within 5 days, send a written notification to KDHE indicating the status. This form is to be sent to KDHE when the incident ends.

KDHE Person Contacted: Chris Seeds Date: 8/9/2020 Time: 10:53 AM

3. Date Incident Discovered: 8/8/2020 Time: 8:10 PM  
4. Date Incident Ended: 8/8/2020 Time: 9:04 PM  
5. Total estimated gallons bypassed, spilled, or routed through failed equipment for all locations on this form: 25 Gallons  
6. If rainfall induced event, approximate inches of rainfall n/a  
If multiple locations listed below due to rain event, check here

7. Incident Location: (check all that apply)
- |  |  |
|--|--|
| <input type="checkbox"/> Plant             | <input type="checkbox"/> City Collection Line (Line Break / Joint) |
| <input type="checkbox"/> Lift/Pump Station | <input type="checkbox"/> Private Sewer Line                        |
| <input type="checkbox"/> Peak Flow Basin   | <input type="checkbox"/> Basement                                  |
| <input type="checkbox"/> Manhole(s)        | <input checked="" type="checkbox"/> Other (specify below)          |

Identify **All** Incident Locations by Name, Street Address or Manhole Number as appropriate.

730 Ottawa called with sewage in basement although they wouldn't let city crews confirm.  
728 Ottawa was leaking from cleanout in rear of address.

8. Cause of Incident:
- |   |  |
|---|--|
| <input type="checkbox"/> Intentional Bypass for Repair/Construction | <input type="checkbox"/> Equipment Failure           |
| <input type="checkbox"/> Excessive Rainfall, Snow Melt              | <input type="checkbox"/> Control System Failure      |
| <input type="checkbox"/> Unplanned Construction Related Break       | <input type="checkbox"/> Power Related Failure       |
| <input type="checkbox"/> City Line Break (Not Construction Related) | <input type="checkbox"/> Operations Related Failure  |
| <input checked="" type="checkbox"/> City Line Blockage              | <input type="checkbox"/> Maintenance Related Failure |
| <input type="checkbox"/> Private Line Break                         | <input type="checkbox"/> Vandalism                   |
| <input type="checkbox"/> Private Line Blockage                      | <input type="checkbox"/> Other                       |
| <input type="checkbox"/> Lagoon High Level                          |  |

Additional explanation of reason for Incident: (use additional page if necessary)

City crews believe grease buildup was the cause of blockage.

9. Corrective Action, if any: (use additional page if necessary)  
City crews cleaned line and hit a blockage at 35'. After blockage was cleared seen a surge of water.  
Cleaned and put lime down.

Name: Tim Guardado Date: 8.10.2020  
Title: Superintendent Phone: 913-682-1090

When Completed, E-mail to: [chris.seeds@ks.gov](mailto:chris.seeds@ks.gov)  
Kansas Department of Health & Environment – Attn: Chris Seeds  
Or Mail to: 1000 SW Jackson St., Suite 420, Topeka , KS 66612-1367  
Fax 785.296.0086



# SANITARY SEWER OVERFLOWS

SEPTEMBER 2020



**KANSAS DEPARTMENT OF HEALTH AND ENVIRONMENT  
WASTEWATER INCIDENT REPORT FORM**

Definitions are available at <http://www.kdheks.gov/water/tech.html>

Collection System Bypass  In-Plant Diversion  Upset  In-Plant Flow Through  Spill

1. FACILITY NAME: Leavenworth, City of Kansas Permit # M-MO12-IO01  
2. Within 24 hours of discovery, notify the KDHE Central Office (email – [chris.seeds@ks.gov](mailto:chris.seeds@ks.gov)), (fax 785.296.0086), (telephone 785.296.5517) or your local KDHE district office. Written notification is required within 5 days of discovery. If the incident is not corrected within 5 days, send a written notification to KDHE indicating the status. This form is to be sent to KDHE when the incident ends.

KDHE Person Contacted: Chris Seeds Date: 9.3.2020 Time: 1:54 am

3. Date Incident Discovered: 9.2.2020 Time: 3:00 pm  
4. Date Incident Ended: 9.2.2020 Time: 4:00 pm  
5. Total estimated gallons bypassed, spilled, or routed through failed equipment for all locations on this form: 125 gallons  
6. If rainfall induced event, approximate inches of rainfall n/a

If multiple locations listed below due to rain event, check here

7. Incident Location: (check all that apply)

- |  |  |
|--|--|
| <input type="checkbox"/> Plant             | <input type="checkbox"/> City Collection Line (Line Break / Joint) |
| <input type="checkbox"/> Lift/Pump Station | <input checked="" type="checkbox"/> Private Sewer Line             |
| <input type="checkbox"/> Peak Flow Basin   | <input type="checkbox"/> Basement                                  |
| <input type="checkbox"/> Manhole(s)        | <input checked="" type="checkbox"/> Other (specify below)          |

Identify All Incident Locations by Name, Street Address or Manhole Number as appropriate.

616 Kickapoo St. back yard. Plumber had a trench dug doing repairs. Sewage filled trench.

8. Cause of Incident:

- |   |  |
|---|--|
| <input type="checkbox"/> Intentional Bypass for Repair/Construction | <input type="checkbox"/> Equipment Failure           |
| <input type="checkbox"/> Excessive Rainfall, Snow Melt              | <input type="checkbox"/> Control System Failure      |
| <input type="checkbox"/> Unplanned Construction Related Break       | <input type="checkbox"/> Power Related Failure       |
| <input type="checkbox"/> City Line Break (Not Construction Related) | <input type="checkbox"/> Operations Related Failure  |
| <input checked="" type="checkbox"/> City Line Blockage              | <input type="checkbox"/> Maintenance Related Failure |
| <input type="checkbox"/> Private Line Break                         | <input type="checkbox"/> Vandalism                   |
| <input type="checkbox"/> Private Line Blockage                      | <input type="checkbox"/> Other                       |
| <input type="checkbox"/> Lagoon High Level                          |  |

Additional explanation of reason for Incident: (use additional page if necessary)

City line had missing pipe. Causing dirt to fall and block line.

9. Corrective Action, if any: (use additional page if necessary)

City crews tried to clean main with and CCTV main. City crews got jet truck stuck in line. City had plumber come in and repair main. Sewage never got out of trench and went back into the sewer system.

Name: Tim Guardado Date: 2.8.2020

Title: Superintendent Phone: 913-682-1090

When Completed, E-mail to: [chris.seeds@ks.gov](mailto:chris.seeds@ks.gov)

Kansas Department of Health & Environment – Attn: Chris Seeds

Or Mail to: 1000 SW Jackson St., Suite 420, Topeka, KS 66612-1367

Fax 785.296.0086



**KANSAS DEPARTMENT OF HEALTH AND ENVIRONMENT  
WASTEWATER INCIDENT REPORT FORM**

Definitions are available at <http://www.kdheks.gov/water/tech.html>

Collection System Bypass  In-Plant Diversion  Upset  In-Plant Flow Through  Spill

1. FACILITY NAME: Leavenworth, City of Kansas Permit # M-MO12-IO01  
2. Within 24 hours of discovery, notify the KDHE Central Office (email – [chris.seeds@ks.gov](mailto:chris.seeds@ks.gov)), (fax 785.296.0086), (telephone 785.296.5517) or your local KDHE district office. Written notification is required within 5 days of discovery. If the incident is not corrected within 5 days, send a written notification to KDHE indicating the status. This form is to be sent to KDHE when the incident ends.

KDHE Person Contacted: Chris Seeds Date: 9.28.2020 Time: 8:30am

3. Date Incident Discovered: 9.27.2020 Time: 11:35am  
4. Date Incident Ended: 9.27.2020 Time: 12:10pm  
5. Total estimated gallons bypassed, spilled, or routed through failed equipment for all locations on this form: 10 Gallons  
6. If rainfall induced event, approximate inches of rainfall n/a  
If multiple locations listed below due to rain event, check here

7. Incident Location: (check all that apply)

<input type="checkbox"/> Plant	<input type="checkbox"/> City Collection Line (Line Break / Joint)
<input type="checkbox"/> Lift/Pump Station	<input checked="" type="checkbox"/> Private Sewer Line
<input type="checkbox"/> Peak Flow Basin	<input type="checkbox"/> Basement
<input type="checkbox"/> Manhole(s)	<input type="checkbox"/> Other (specify below)

Identify **All** Incident Locations by Name, Street Address or Manhole Number as appropriate.

217 N Broadway Sewage was out of cleanout of house.

8. Cause of Incident:

<input type="checkbox"/> Intentional Bypass for Repair/Construction	<input type="checkbox"/> Equipment Failure
<input type="checkbox"/> Excessive Rainfall, Snow Melt	<input type="checkbox"/> Control System Failure
<input type="checkbox"/> Unplanned Construction Related Break	<input type="checkbox"/> Power Related Failure
<input type="checkbox"/> City Line Break (Not Construction Related)	<input type="checkbox"/> Operations Related Failure
<input type="checkbox"/> City Line Blockage	<input type="checkbox"/> Maintenance Related Failure
<input type="checkbox"/> Private Line Break	<input type="checkbox"/> Vandalism
<input checked="" type="checkbox"/> Private Line Blockage	<input type="checkbox"/> Other
<input type="checkbox"/> Lagoon High Level	

Additional explanation of reason for Incident: (use additional page if necessary)

Homeowner believes he may have roots in private line.

9. Corrective Action, if any: (use additional page if necessary)

City crews checked city main and found no problems. Homeowner will get line cleaned out. Home Owner had Roto Rooter clear their line.

Name: Tim Guardado Date: \_\_\_\_\_

Title: Superintendent Phone 913-682-1090

When Completed, E-mail to: [chris.seeds@ks.gov](mailto:chris.seeds@ks.gov)

Kansas Department of Health & Environment – Attn: Chris Seeds

Or Mail to: 1000 SW Jackson St., Suite 420, Topeka, KS 66612-1367

Fax 785.296.0086



# SANITARY SEWER OVERFLOWS

OCTOBER 2020



**KANSAS DEPARTMENT OF HEALTH AND ENVIRONMENT  
WASTEWATER INCIDENT REPORT FORM**

Definitions are available at <http://www.kdheks.gov/water/tech.html>

Collection System Bypass  In-Plant Diversion  Upset  In-Plant Flow Through  Spill

1. FACILITY NAME: Leavenworth, City of Kansas Permit # M-MO12-IO01  
2. Within 24 hours of discovery, notify the KDHE Central Office (email – [chris.seeds@ks.gov](mailto:chris.seeds@ks.gov)), (fax 785.296.0086), (telephone 785.296.5517) or your local KDHE district office. Written notification is required within 5 days of discovery. If the incident is not corrected within 5 days, send a written notification to KDHE indicating the status. This form is to be sent to KDHE when the incident ends.

KDHE Person Contacted: Chris Seeds Date: 10.5.20 Time: 12:09pm

3. Date Incident Discovered: 10.5.20 Time: 9:30 am  
4. Date Incident Ended: 10.5.20 Time: 10:00 am  
5. Total estimated gallons bypassed, spilled, or routed through failed equipment for all locations on this form: 20 gal  
6. If rainfall induced event, approximate inches of rainfall n/a  
If multiple locations listed below due to rain event, check here

7. Incident Location: (check all that apply)
- |  |  |
|--|--|
| <input type="checkbox"/> Plant             | <input type="checkbox"/> City Collection Line (Line Break / Joint) |
| <input type="checkbox"/> Lift/Pump Station | <input checked="" type="checkbox"/> Private Sewer Line             |
| <input type="checkbox"/> Peak Flow Basin   | <input type="checkbox"/> Basement                                  |
| <input type="checkbox"/> Manhole(s)        | <input type="checkbox"/> Other (specify below)                     |

Identify **All** Incident Locations by Name, Street Address or Manhole Number as appropriate.

1112 Broadway st The private lateral running from this house goes through the yard of 780 James St. leaking out of a cleanout.

8. Cause of Incident:
- |   |  |
|---|--|
| <input type="checkbox"/> Intentional Bypass for Repair/Construction | <input type="checkbox"/> Equipment Failure           |
| <input type="checkbox"/> Excessive Rainfall, Snow Melt              | <input type="checkbox"/> Control System Failure      |
| <input type="checkbox"/> Unplanned Construction Related Break       | <input type="checkbox"/> Power Related Failure       |
| <input type="checkbox"/> City Line Break (Not Construction Related) | <input type="checkbox"/> Operations Related Failure  |
| <input type="checkbox"/> City Line Blockage                         | <input type="checkbox"/> Maintenance Related Failure |
| <input type="checkbox"/> Private Line Break                         | <input type="checkbox"/> Vandalism                   |
| <input checked="" type="checkbox"/> Private Line Blockage           | <input type="checkbox"/> Other                       |
| <input type="checkbox"/> Lagoon High Level                          |  |

Additional explanation of reason for Incident: (use additional page if necessary)

Private lateral blocked causing overflow out of cleanout.

9. Corrective Action, if any: (use additional page if necessary)  
City crews check city main no problems. City crews clean spill. J.F. Denney repaired problem for Homeowner.

Name: Tim Guardado Date: 10.8.2020  
Title: Superintendent Phone: 913-682-1090

When Completed, E-mail to: [chris.seeds@ks.gov](mailto:chris.seeds@ks.gov)

Kansas Department of Health & Environment – Attn: Chris Seeds

Or Mail to: 1000 SW Jackson St., Suite 420, Topeka, KS 66612-1367  
Fax 785.296.0086

**KANSAS DEPARTMENT OF HEALTH AND ENVIRONMENT  
WASTEWATER INCIDENT REPORT FORM**

Definitions are available at <http://www.kdheks.gov/water/tech.html>

Collection System Bypass  In-Plant Diversion  Upset  In-Plant Flow Through  Spill

1. FACILITY NAME: Leavenworth, City of Kansas Permit # M-MO12-IO01  
2. Within 24 hours of discovery, notify the KDHE Central Office (email – [chris.seeds@ks.gov](mailto:chris.seeds@ks.gov)), (fax 785.296.0086), (telephone 785.296.5517) or your local KDHE district office. Written notification is required within 5 days of discovery. If the incident is not corrected within 5 days, send a written notification to KDHE indicating the status. This form is to be sent to KDHE when the incident ends.

KDHE Person Contacted: Chris Seeds Date: 10/23/2020 Time: 5:19pm

3. Date Incident Discovered: 10/23/2020 Time: 3:50pm  
4. Date Incident Ended: 10/23/2020 Time: 5:30pm  
5. Total estimated gallons bypassed, spilled, or routed through failed equipment for all locations on this form: 100 gallons  
6. If rainfall induced event, approximate inches of rainfall n/a

If multiple locations listed below due to rain event, check here

7. Incident Location: (check all that apply)

- |  |  |
|--|--|
| <input type="checkbox"/> Plant             | <input type="checkbox"/> City Collection Line (Line Break / Joint) |
| <input type="checkbox"/> Lift/Pump Station | <input type="checkbox"/> Private Sewer Line                        |
| <input type="checkbox"/> Peak Flow Basin   | <input checked="" type="checkbox"/> Basement                       |
| <input type="checkbox"/> Manhole(s)        | <input type="checkbox"/> Other (specify below)                     |

Identify **All** Incident Locations by Name, Street Address or Manhole Number as appropriate.

312 S 10<sup>th</sup> St. Sewage was in crawl space of the house. It had begun running out of crawl space, down the alley and onto Grand Ave.

8. Cause of Incident:

- |   |  |
|---|--|
| <input type="checkbox"/> Intentional Bypass for Repair/Construction | <input type="checkbox"/> Equipment Failure           |
| <input type="checkbox"/> Excessive Rainfall, Snow Melt              | <input type="checkbox"/> Control System Failure      |
| <input type="checkbox"/> Unplanned Construction Related Break       | <input type="checkbox"/> Power Related Failure       |
| <input type="checkbox"/> City Line Break (Not Construction Related) | <input type="checkbox"/> Operations Related Failure  |
| <input type="checkbox"/> City Line Blockage                         | <input type="checkbox"/> Maintenance Related Failure |
| <input checked="" type="checkbox"/> Private Line Break              | <input type="checkbox"/> Vandalism                   |
| <input type="checkbox"/> Private Line Blockage                      | <input type="checkbox"/> Other                       |
| <input type="checkbox"/> Lagoon High Level                          |  |

Additional explanation of reason for Incident: (use additional page if necessary)

According to the home owner the private line in the crawl space was broken.

9. Corrective Action, if any: (use additional page if necessary)

Homeowner had Chucks Plumbing come and fix the broken line in the crawl space on 4:05pm

10/30/20.

Name: Tim Guardado Date: 11/02/20

Title: Superintendent Phone: 913-682-1090

When Completed, E-mail to: [chris.seeds@ks.gov](mailto:chris.seeds@ks.gov)

Kansas Department of Health & Environment – Attn: Chris Seeds

Or Mail to: 1000 SW Jackson St., Suite 420, Topeka, KS 66612-1367

Fax 785.296.0086



**KANSAS DEPARTMENT OF HEALTH AND ENVIRONMENT  
WASTEWATER INCIDENT REPORT FORM**

Definitions are available at <http://www.kdheks.gov/water/tech.html>

Collection System Bypass       In-Plant Diversion       Upset       In-Plant Flow Through       Spill

1. FACILITY NAME: Leavenworth, City of      Kansas Permit # M-MO12-IO01  
2. Within 24 hours of discovery, notify the KDHE Central Office (email – [chris.seeds@ks.gov](mailto:chris.seeds@ks.gov)), (fax 785.296.0086), (telephone 785.296.5517) or your local KDHE district office. Written notification is required within 5 days of discovery. If the incident is not corrected within 5 days, send a written notification to KDHE indicating the status. This form is to be sent to KDHE when the incident ends.

KDHE Person Contacted: Chris Seeds      Date: 10.26.20      Time: 2:17pm

3. Date Incident Discovered: 10.26.20      Time: 10:10am  
4. Date Incident Ended: 10.26.20      Time: 11:25am  
5. Total estimated gallons bypassed, spilled, or routed through failed equipment for all locations on this form: 25 gallons  
6. If rainfall induced event, approximate inches of rainfall n/a

If multiple locations listed below due to rain event, check here

7. Incident Location: (check all that apply)
- |  |  |
|--|--|
| <input type="checkbox"/> Plant             | <input type="checkbox"/> City Collection Line (Line Break / Joint) |
| <input type="checkbox"/> Lift/Pump Station | <input type="checkbox"/> Private Sewer Line                        |
| <input type="checkbox"/> Peak Flow Basin   | <input checked="" type="checkbox"/> Basement                       |
| <input type="checkbox"/> Manhole(s)        | <input type="checkbox"/> Other (specify below)                     |

Identify **All** Incident Locations by Name, Street Address or Manhole Number as appropriate.

616 Kickapoo St basement around floor drain.

8. Cause of Incident:
- |   |  |
|---|--|
| <input type="checkbox"/> Intentional Bypass for Repair/Construction | <input type="checkbox"/> Equipment Failure           |
| <input type="checkbox"/> Excessive Rainfall, Snow Melt              | <input type="checkbox"/> Control System Failure      |
| <input type="checkbox"/> Unplanned Construction Related Break       | <input type="checkbox"/> Power Related Failure       |
| <input type="checkbox"/> City Line Break (Not Construction Related) | <input type="checkbox"/> Operations Related Failure  |
| <input type="checkbox"/> City Line Blockage                         | <input type="checkbox"/> Maintenance Related Failure |
| <input type="checkbox"/> Private Line Break                         | <input type="checkbox"/> Vandalism                   |
| <input checked="" type="checkbox"/> Private Line Blockage           | <input type="checkbox"/> Other                       |
| <input type="checkbox"/> Lagoon High Level                          |  |

Additional explanation of reason for Incident: (use additional page if necessary)

Private line was blocked. Cleanout open looked as if sticks were thrown into cleanout.

9. Corrective Action, if any: (use additional page if necessary)  
City crews cleaned mains in area found no problems. Homeowner had Plumber(Kevin Lis) out to clean Private line found sticks thrown in line cleaned out sewage went down.

Name: Tim Guardado      Date: 10.28.2020

Title: Superintendent      Phone: 913-682-1090

When Completed, E-mail to: [chris.seeds@ks.gov](mailto:chris.seeds@ks.gov)

Kansas Department of Health & Environment – Attn: Chris Seeds

Or Mail to: 1000 SW Jackson St., Suite 420, Topeka , KS 66612-1367

Fax 785.296.0086



# SANITARY SEWER OVERFLOWS

NOVEMBER 2020



**KANSAS DEPARTMENT OF HEALTH AND ENVIRONMENT  
WASTEWATER INCIDENT REPORT FORM**

Definitions are available at <http://www.kdheks.gov/water/tech.html>

Collection System Bypass  In-Plant Diversion  Upset  In-Plant Flow Through  Spill

1. FACILITY NAME: Leavenworth, City of Kansas Permit # M-MO12-IO01  
2. Within 24 hours of discovery, notify the KDHE Central Office (email – [chris.seeds@ks.gov](mailto:chris.seeds@ks.gov)), (fax 785.296.0086), (telephone 785.296.5517) or your local KDHE district office. Written notification is required within 5 days of discovery. If the incident is not corrected within 5 days, send a written notification to KDHE indicating the status. This form is to be sent to KDHE when the incident ends.

KDHE Person Contacted: Chris Seeds Date: 11.09.2020 Time: 7:53 am

3. Date Incident Discovered: 11.08.2020 Time: 5:30 pm  
4. Date Incident Ended: 11.08.2020 Time: 5:45 pm  
5. Total estimated gallons bypassed, spilled, or routed through failed equipment for all locations on this form: 20 Gallons  
6. If rainfall induced event, approximate inches of rainfall n/a  
If multiple locations listed below due to rain event, check here

7. Incident Location: (check all that apply)
- |  |  |
|--|--|
| <input type="checkbox"/> Plant                 | <input type="checkbox"/> City Collection Line (Line Break / Joint) |
| <input type="checkbox"/> Lift/Pump Station     | <input type="checkbox"/> Private Sewer Line                        |
| <input type="checkbox"/> Peak Flow Basin       | <input type="checkbox"/> Basement                                  |
| <input checked="" type="checkbox"/> Manhole(s) | <input type="checkbox"/> Other (specify below)                     |

Identify **All** Incident Locations by Name, Street Address or Manhole Number as appropriate.  
1510 Pawnee St. out of manhole 1160

8. Cause of Incident:
- |  |  |
|--|--|
| <input type="checkbox"/> Intentional Bypass for Repair/Construction      | <input type="checkbox"/> Equipment Failure           |
| <input type="checkbox"/> Excessive Rainfall, Snow Melt                   | <input type="checkbox"/> Control System Failure      |
| <input checked="" type="checkbox"/> Unplanned Construction Related Break | <input type="checkbox"/> Power Related Failure       |
| <input type="checkbox"/> City Line Break (Not Construction Related)      | <input type="checkbox"/> Operations Related Failure  |
| <input type="checkbox"/> City Line Blockage                              | <input type="checkbox"/> Maintenance Related Failure |
| <input type="checkbox"/> Private Line Break                              | <input type="checkbox"/> Vandalism                   |
| <input type="checkbox"/> Private Line Blockage                           | <input type="checkbox"/> Other                       |
| <input type="checkbox"/> Lagoon High Level                               |  |

Additional explanation of reason for Incident: (use additional page if necessary)  
Baker construction company was milling and repaving street. Around manholes they were adding riser rings and concreting them in. Concrete got into manhole and outflow was full.

9. Corrective Action, if any: (use additional page if necessary)  
Pump sewage from manhole 1160 to downstream manhole 1159. After manhole was cleared Baker Construction removed concrete from manhole 1160.

Name: Tim Guardado Date: 11.09.2020  
Title: Superintendent Phone: 913-682-1090

When Completed, E-mail to: [chris.seeds@ks.gov](mailto:chris.seeds@ks.gov)  
Kansas Department of Health & Environment – Attn: Chris Seeds  
Or Mail to: 1000 SW Jackson St., Suite 420, Topeka , KS 66612-1367  
Fax 785.296.0086

**KANSAS DEPARTMENT OF HEALTH AND ENVIRONMENT  
WASTEWATER INCIDENT REPORT FORM**

Definitions are available at <http://www.kdheks.gov/water/tech.html>

Collection System Bypass  In-Plant Diversion  Upset  In-Plant Flow Through  Spill

1. FACILITY NAME: Leavenworth, City of Kansas Permit # M-MO12-IO01  
2. Within 24 hours of discovery, notify the KDHE Central Office (email – [chris.seeds@ks.gov](mailto:chris.seeds@ks.gov)), (fax 785.296.0086), (telephone 785.296.5517) or your local KDHE district office. Written notification is required within 5 days of discovery. If the incident is not corrected within 5 days, send a written notification to KDHE indicating the status. This form is to be sent to KDHE when the incident ends.

KDHE Person Contacted: Chris Seeds Date: 11.12.2020 Time: 12:48 pm

3. Date Incident Discovered: 11.12.2020 Time: 8:30 am

4. Date Incident Ended: 11.12.2020 Time: 3:00 pm

5. Total estimated gallons bypassed, spilled, or routed through failed equipment for all locations on this form: 6,750 gallons

6. If rainfall induced event, approximate inches of rainfall n/a

If multiple locations listed below due to rain event, check here

7. Incident Location: (check all that apply)

- |  |  |
|--|--|
| <input type="checkbox"/> Plant                 | <input type="checkbox"/> City Collection Line (Line Break / Joint) |
| <input type="checkbox"/> Lift/Pump Station     | <input type="checkbox"/> Private Sewer Line                        |
| <input type="checkbox"/> Peak Flow Basin       | <input type="checkbox"/> Basement                                  |
| <input checked="" type="checkbox"/> Manhole(s) | <input checked="" type="checkbox"/> Other (specify below)          |

Identify **All** Incident Locations by Name, Street Address or Manhole Number as appropriate.

4808 Brewer Place from manhole 1590. Vac truck while cleaning dumped at Lansing WWTP 555 N Highway 5 and lost a little at their dump station.

8. Cause of Incident:

- |   |  |
|---|--|
| <input type="checkbox"/> Intentional Bypass for Repair/Construction | <input type="checkbox"/> Equipment Failure           |
| <input type="checkbox"/> Excessive Rainfall, Snow Melt              | <input type="checkbox"/> Control System Failure      |
| <input type="checkbox"/> Unplanned Construction Related Break       | <input type="checkbox"/> Power Related Failure       |
| <input type="checkbox"/> City Line Break (Not Construction Related) | <input type="checkbox"/> Operations Related Failure  |
| <input checked="" type="checkbox"/> City Line Blockage              | <input type="checkbox"/> Maintenance Related Failure |
| <input type="checkbox"/> Private Line Break                         | <input type="checkbox"/> Vandalism                   |
| <input type="checkbox"/> Private Line Blockage                      | <input type="checkbox"/> Other                       |
| <input type="checkbox"/> Lagoon High Level                          |  |

Additional explanation of reason for Incident: (use additional page if necessary)

City line was blocked with large chunks of grease.

9. Corrective Action, if any: (use additional page if necessary)

City crews cleaned line. City is also checking grease trap cleaning for business in the area. Areas of Bypass are being cleaned. Lansing was notified of bypass.

Name: Tim Guardado Date: 11.13.2020

Title: Superintendent Phone: 913-682-1090

When Completed, E-mail to: [chris.seeds@ks.gov](mailto:chris.seeds@ks.gov)

Kansas Department of Health & Environment – Attn: Chris Seeds

Or Mail to: 1000 SW Jackson St., Suite 420, Topeka, KS 66612-1367

Fax 785.296.0086



**KANSAS DEPARTMENT OF HEALTH AND ENVIRONMENT  
WASTEWATER BYPASS REPORT FORM**

1. FACILITY NAME: Fort Leavenworth Kansas Permit # M-MO12-IO 01

2. Within 24 Hours of Discovery, Notify the KDHE Central Office (email – [cseeds@kdhe.state.ks.us](mailto:cseeds@kdhe.state.ks.us)), (fax 785.296.0086), (telephone 785.296.5517) or your KDHE local district office. Written notification required within 5 days of discovery.

KDHE Person Contacted: Cris Seeds Date: 11/12/2020 Time: 4:03pm

3. Date Bypass Discovered: 11/12/2020 Time: 1:00pm

4. Date Bypass Ended: 11/12/2020 Time: 4:05pm

5. Total Estimated Gallons Bypassed for All Locations on this Form: 200 gallons

6. If rainfall event, approximate inches of rainfall N/A

If multiple bypass locations listed below due to rain event, check here \_\_\_\_\_

7. Bypass Location (check all that apply):

<input type="checkbox"/> Plant	<input type="checkbox"/> City Collection Line
<input checked="" type="checkbox"/> Lift/Pump Station	<input type="checkbox"/> Private Sewer Line
<input type="checkbox"/> Peak Flow Basin	<input type="checkbox"/> Other (specify below)

Manhole(s) (list manhole #'s below)

Riverside Lift Station – East side of Riverside Ave by railroad tracks.

8. Cause of Bypass: (definitions available at <http://www.kdheks.gov/water/tech.html>)

<input type="checkbox"/> Intentional Bypass for Repair/Construction	<input type="checkbox"/> Equipment Failure
<input type="checkbox"/> Excessive Rainfall, Snow Melt	<input checked="" type="checkbox"/> Control System Failure
<input type="checkbox"/> Unplanned Construction Related Break	<input type="checkbox"/> Power Related Failure
<input type="checkbox"/> City Line Break (Not Construction Related)	<input type="checkbox"/> Operations Related Failure
<input type="checkbox"/> City Line Blockage	<input type="checkbox"/> Maintenance Related Failure
<input type="checkbox"/> Private Line Break	<input type="checkbox"/> Vandalism
<input type="checkbox"/> Private Line Blockage	<input type="checkbox"/> Spill
<input type="checkbox"/> Lagoon High Level	<input type="checkbox"/> Other

Additional explanation of reason for bypass: (use additional page if necessary)

The Water Plant Mixing and Primary basins were in the process of being cleaned and the large amounts of water ultimately caused the SSO. The Riverside Lift Station was having communication issues and did not alert the crew to the high float alarms.

9. Corrective Action, if any: (use additional page if necessary)

The water was removed from the surface with the vacuum truck and lime was applied to the ground for disinfection.

Name: Andrew Turner Date: 11/12/2020

Title: Specialist, Environmental, Health and Safety

When Completed, Mail to: Kansas Department of Health and Environment  
Attn: Chris Seeds  
1000 SW Jackson St., Suite 420  
Topeka, KS 66612-1367

**KANSAS DEPARTMENT OF HEALTH AND ENVIRONMENT  
WASTEWATER INCIDENT REPORT FORM**

Definitions are available at <http://www.kdheks.gov/water/tech.html>

Collection System Bypass  In-Plant Diversion  Upset  In-Plant Flow Through  Spill

1. FACILITY NAME: Leavenworth, City of Kansas Permit # M-MO12-IO01  
2. Within 24 hours of discovery, notify the KDHE Central Office (email – [chris.seeds@ks.gov](mailto:chris.seeds@ks.gov)), (fax 785.296.0086), (telephone 785.296.5517) or your local KDHE district office. Written notification is required within 5 days of discovery. If the incident is not corrected within 5 days, send a written notification to KDHE indicating the status. This form is to be sent to KDHE when the incident ends.

KDHE Person Contacted: Chris Seeds Date: 11.24.2020 Time: 10:05

3. Date Incident Discovered: 11.23.2020 Time: 2:58pm  
4. Date Incident Ended: 12.19.2020 Time: 4:00pm  
5. Total estimated gallons bypassed, spilled, or routed through failed equipment for all locations on this form: 65 Gallons  
6. If rainfall induced event, approximate inches of rainfall n/a  
If multiple locations listed below due to rain event, check here

7. Incident Location: (check all that apply)

- |  |  |
|--|--|
| <input type="checkbox"/> Plant             | <input type="checkbox"/> City Collection Line (Line Break / Joint) |
| <input type="checkbox"/> Lift/Pump Station | <input checked="" type="checkbox"/> Private Sewer Line             |
| <input type="checkbox"/> Peak Flow Basin   | <input type="checkbox"/> Basement                                  |
| <input type="checkbox"/> Manhole(s)        | <input type="checkbox"/> Other (specify below)                     |

Identify **All** Incident Locations by Name, Street Address or Manhole Number as appropriate.

407 Maple St. sewage coming out of cleanout next to house.

8. Cause of Incident:

- |   |  |
|---|--|
| <input type="checkbox"/> Intentional Bypass for Repair/Construction | <input type="checkbox"/> Equipment Failure           |
| <input type="checkbox"/> Excessive Rainfall, Snow Melt              | <input type="checkbox"/> Control System Failure      |
| <input type="checkbox"/> Unplanned Construction Related Break       | <input type="checkbox"/> Power Related Failure       |
| <input type="checkbox"/> City Line Break (Not Construction Related) | <input type="checkbox"/> Operations Related Failure  |
| <input type="checkbox"/> City Line Blockage                         | <input type="checkbox"/> Maintenance Related Failure |
| <input type="checkbox"/> Private Line Break                         | <input type="checkbox"/> Vandalism                   |
| <input checked="" type="checkbox"/> Private Line Blockage           | <input type="checkbox"/> Other                       |
| <input type="checkbox"/> Lagoon High Level                          |  |

Additional explanation of reason for Incident: (use additional page if necessary)  
private line was blocked.

9. Corrective Action, if any: (use additional page if necessary)

Homeowner had plumber clean out reddi rooter could not open. City tried could not get open. Found a Cleanout further down the street. Homeowner cleaned form there and got line open. City shut off water.

They could not make contact with owner of house. Current residents are leasing to own house.

Name: Tim Guardado Date: 12.24.2020  
Title: Superintendent Phone: 913-682-1090

When Completed, E-mail to: [chris.seeds@ks.gov](mailto:chris.seeds@ks.gov)

Kansas Department of Health & Environment – Attn: Chris Seeds  
Or Mail to: 1000 SW Jackson St., Suite 420, Topeka , KS 66612-1367  
Fax 785.296.0086



# SANITARY SEWER OVERFLOWS

DECEMBER 2020



**KANSAS DEPARTMENT OF HEALTH AND ENVIRONMENT  
WASTEWATER INCIDENT REPORT FORM**

Definitions are available at <http://www.kdheks.gov/water/tech.html>

Collection System Bypass  In-Plant Diversion  Upset  In-Plant Flow Through  Spill

1. FACILITY NAME: Leavenworth, City of Kansas Permit # M-MO12-IO01  
2. Within 24 hours of discovery, notify the KDHE Central Office (email – [chris.seeds@ks.gov](mailto:chris.seeds@ks.gov)), (fax 785.296.0086), (telephone 785.296.5517) or your local KDHE district office. Written notification is required within 5 days of discovery. If the incident is not corrected within 5 days, send a written notification to KDHE indicating the status. This form is to be sent to KDHE when the incident ends.

KDHE Person Contacted: Chris Seeds Date: 12.8.2020 Time: 6:32 pm

3. Date Incident Discovered: 12.8.2020 Time: 3:45 pm  
4. Date Incident Ended: 12.8.2020 Time: 5:35 pm  
5. Total estimated gallons bypassed, spilled, or routed through failed equipment for all locations on this form: 12,000 gallons  
6. If rainfall induced event, approximate inches of rainfall n/a

If multiple locations listed below due to rain event, check here

7. Incident Location: (check all that apply)

- |  |  |
|--|--|
| <input type="checkbox"/> Plant                 | <input type="checkbox"/> City Collection Line (Line Break / Joint) |
| <input type="checkbox"/> Lift/Pump Station     | <input type="checkbox"/> Private Sewer Line                        |
| <input type="checkbox"/> Peak Flow Basin       | <input type="checkbox"/> Basement                                  |
| <input checked="" type="checkbox"/> Manhole(s) | <input type="checkbox"/> Other (specify below)                     |

Identify **All** Incident Locations by Name, Street Address or Manhole Number as appropriate.

101 S. 4<sup>th</sup> St. out of manhole 0261. Sewage got into 3 mile creek.

8. Cause of Incident:

- |   |  |
|---|--|
| <input type="checkbox"/> Intentional Bypass for Repair/Construction | <input type="checkbox"/> Equipment Failure           |
| <input type="checkbox"/> Excessive Rainfall, Snow Melt              | <input type="checkbox"/> Control System Failure      |
| <input type="checkbox"/> Unplanned Construction Related Break       | <input type="checkbox"/> Power Related Failure       |
| <input type="checkbox"/> City Line Break (Not Construction Related) | <input type="checkbox"/> Operations Related Failure  |
| <input checked="" type="checkbox"/> City Line Blockage              | <input type="checkbox"/> Maintenance Related Failure |
| <input type="checkbox"/> Private Line Break                         | <input type="checkbox"/> Vandalism                   |
| <input type="checkbox"/> Private Line Blockage                      | <input type="checkbox"/> Other                       |
| <input type="checkbox"/> Lagoon High Level                          |  |

Additional explanation of reason for Incident: (use additional page if necessary)

City line was blocked with rags.

9. Corrective Action, if any: (use additional page if necessary)

City crews cleaned sanitary sewer main from manhole 0261 to manhole 0262. Crews then used the push camera to inspect main. Crews cleaned and will take ecoli samples of the creek.

Name: Tim Guardado Date: 12.9.2020

Title: Superintendent Phone: 913-682-1090

When Completed, E-mail to: [chris.seeds@ks.gov](mailto:chris.seeds@ks.gov)

Kansas Department of Health & Environment – Attn: Chris Seeds

Or Mail to: 1000 SW Jackson St., Suite 420, Topeka , KS 66612-1367

Fax 785.296.0086



**KANSAS DEPARTMENT OF HEALTH AND ENVIRONMENT  
WASTEWATER INCIDENT REPORT FORM**

Definitions are available at <http://www.kdheks.gov/water/tech.html>

Collection System Bypass       In-Plant Diversion       Upset       In-Plant Flow Through       Spill

1. FACILITY NAME: Leavenworth, City of      Kansas Permit # M-MO12-IO01  
2. Within 24 hours of discovery, notify the KDHE Central Office (email – [chris.seeds@ks.gov](mailto:chris.seeds@ks.gov)), (fax 785.296.0086), (telephone 785.296.5517) or your local KDHE district office. Written notification is required within 5 days of discovery. If the incident is not corrected within 5 days, send a written notification to KDHE indicating the status. This form is to be sent to KDHE when the incident ends.

KDHE Person Contacted: Chris Seeds      Date: 12.10.2020      Time: 7:54 am

3. Date Incident Discovered: 12.09.2020      Time: 5:48 pm  
4. Date Incident Ended: 12.10.2020      Time: 2:30 pm  
5. Total estimated gallons bypassed, spilled, or routed through failed equipment for all locations on this form: 200 gallons  
6. If rainfall induced event, approximate inches of rainfall n/a

If multiple locations listed below due to rain event, check here

7. Incident Location: (check all that apply)
- |  |  |
|--|--|
| <input type="checkbox"/> Plant                 | <input type="checkbox"/> City Collection Line (Line Break / Joint) |
| <input type="checkbox"/> Lift/Pump Station     | <input type="checkbox"/> Private Sewer Line                        |
| <input type="checkbox"/> Peak Flow Basin       | <input type="checkbox"/> Basement                                  |
| <input checked="" type="checkbox"/> Manhole(s) | <input checked="" type="checkbox"/> Other (specify below)          |

Identify **All** Incident Locations by Name, Street Address or Manhole Number as appropriate.

219 N. Esplanade St.

8. Cause of Incident:
- |   |  |
|---|--|
| <input type="checkbox"/> Intentional Bypass for Repair/Construction | <input type="checkbox"/> Equipment Failure           |
| <input type="checkbox"/> Excessive Rainfall, Snow Melt              | <input type="checkbox"/> Control System Failure      |
| <input type="checkbox"/> Unplanned Construction Related Break       | <input type="checkbox"/> Power Related Failure       |
| <input type="checkbox"/> City Line Break (Not Construction Related) | <input type="checkbox"/> Operations Related Failure  |
| <input checked="" type="checkbox"/> City Line Blockage              | <input type="checkbox"/> Maintenance Related Failure |
| <input type="checkbox"/> Private Line Break                         | <input type="checkbox"/> Vandalism                   |
| <input type="checkbox"/> Private Line Blockage                      | <input type="checkbox"/> Other                       |
| <input type="checkbox"/> Lagoon High Level                          |  |

Additional explanation of reason for incident: (use additional page if necessary)

City had contractor replacing a Lamphole 0222.3 and installing a Manhole for access to city main. City main had a collapse further down main which is causing sewage to back up into trench.

9. Corrective Action, if any: (use additional page if necessary)  
Contractor is repairing collapse in main. City crews have cleaned sewage from trench. Manholes are Being installed at lamphole and collapse locations.

Name: Tim Guardado      Date: 12.15.2020

Title: Superintendent      Phone: 913-682-1090

When Completed, E-mail to: [chris.seeds@ks.gov](mailto:chris.seeds@ks.gov)

Kansas Department of Health & Environment – Attn: Chris Seeds  
Or Mail to: 1000 SW Jackson St., Suite 420, Topeka , KS 66612-1367  
Fax 785.296.0086

**KANSAS DEPARTMENT OF HEALTH AND ENVIRONMENT  
WASTEWATER INCIDENT REPORT FORM**

Definitions are available at <http://www.kdheks.gov/water/tech.html>

Collection System Bypass  In-Plant Diversion  Upset  In-Plant Flow Through  Spill

1. FACILITY NAME: Leavenworth, City of Kansas Permit # M-MO12-IO01  
2. Within 24 hours of discovery, notify the KDHE Central Office (email – [chris.seeds@ks.gov](mailto:chris.seeds@ks.gov)), (fax 785.296.0086), (telephone 785.296.5517) or your local KDHE district office. Written notification is required within 5 days of discovery. If the incident is not corrected within 5 days, send a written notification to KDHE indicating the status. This form is to be sent to KDHE when the incident ends.

KDHE Person Contacted: Chris Seeds Date: 12.30.2020 Time: 11:12 am

3. Date Incident Discovered: 12.29.2020 Time: 9:04 pm  
4. Date Incident Ended: 12.30.220 Time: 10:30 am  
5. Total estimated gallons bypassed, spilled, or routed through failed equipment for all locations on this form: 25 Gallons  
6. If rainfall induced event, approximate inches of rainfall n/a

If multiple locations listed below due to rain event, check here

7. Incident Location: (check all that apply)

- |  |  |
|--|--|
| <input type="checkbox"/> Plant             | <input type="checkbox"/> City Collection Line (Line Break / Joint) |
| <input type="checkbox"/> Lift/Pump Station | <input type="checkbox"/> Private Sewer Line                        |
| <input type="checkbox"/> Peak Flow Basin   | <input checked="" type="checkbox"/> Basement                       |
| <input type="checkbox"/> Manhole(s)        | <input type="checkbox"/> Other (specify below)                     |

Identify **All** Incident Locations by Name, Street Address or Manhole Number as appropriate.

1120 Pawnee St. confined to basement.

8. Cause of Incident:

- |   |  |
|---|--|
| <input type="checkbox"/> Intentional Bypass for Repair/Construction | <input type="checkbox"/> Equipment Failure           |
| <input type="checkbox"/> Excessive Rainfall, Snow Melt              | <input type="checkbox"/> Control System Failure      |
| <input type="checkbox"/> Unplanned Construction Related Break       | <input type="checkbox"/> Power Related Failure       |
| <input type="checkbox"/> City Line Break (Not Construction Related) | <input type="checkbox"/> Operations Related Failure  |
| <input type="checkbox"/> City Line Blockage                         | <input type="checkbox"/> Maintenance Related Failure |
| <input type="checkbox"/> Private Line Break                         | <input type="checkbox"/> Vandalism                   |
| <input checked="" type="checkbox"/> Private Line Blockage           | <input type="checkbox"/> Other                       |
| <input type="checkbox"/> Lagoon High Level                          |  |

Additional explanation of reason for Incident: (use additional page if necessary)

Private line was blocked

9. Corrective Action, if any: (use additional page if necessary)

City crews cleared blockage. Inspected private lateral. Gave all info to homeowner at 1120 Pawnee St.

Informed homeowner they need to get private line repaired.

Name: Tim Guardado Date: 11.31.2020

Title: Superintendent Phone: 913-682-1090

When Completed, E-mail to: [chris.seeds@ks.gov](mailto:chris.seeds@ks.gov)

Kansas Department of Health & Environment – Attn: Chris Seeds

Or Mail to: 1000 SW Jackson St., Suite 420, Topeka, KS 66612-1367

Fax 785.296.0086

**CITY of LEAVENWORTH WASTEWATER TREATMENT PLANT - JULY 31, 2020-DECEMBER 31, 2020**

**MAINTENANCE LOG**

NO.	LOCATION	UP/DOWN MH	FOOTAGE	DATE/TIME	FLUSH	ROD	CHECK	CREW	VEHICLE	REASON/PROBLEM
1	1320 S. 4TH STREET	0619-0627	374							Sags 112' from MH 4207
2	210 ELM STREET	0614-0613.1	620							MH 0613.1 collects debris
3	306 S. 3RD STREET	0195-0194	408							Severe sags
4	100 N. 5TH STREET	0228-0227	828							Sewer smell in City Hall
5	401 DELAWARE STREET	0270-0269.1	391.5							Sags and grease
6	914 BROADWAY STREET	0065-0065.1	180							Sags and grease
7	744 POTTAWATOMIE	0165.1-0166	1000							Clean downstream flat
8	8TH & POTTAWATOMIE	0167-0168	200							Sags and grease
9	611 N. BROADWAY	0150.2-0150.1	55							Line is flat
10	11TH & KIOWA	0125.1-0125	200							Severe sags
11	1500 PAWNEE STREET	1160-1635	501							Sags 28' East MH 1159
12	14TH & MIAMI	1291-1290	168							Sags
13	2049 MARJORIE CIRCLE	1764-1763	144							Severe offset in joints and roots
14	GRAND AVE & IRONMOULDERS	0436-0436.1	159							Severe sags
15	705 SCOTT STREET	0526-0536.2	218							Roots
16	2109 S. 4TH STREET	0657.2-0657.1	20							Grease buildup
17	503 SPENCER PLACE	2437-2417-2416	475							Debris buildup in MH 2415
18	3917 LAKEVIEW DRIVE	1981.2-1981	414.7							Light to medium grease
19	CODY PARK	1443-1404	114							Creek crossing roots
20	2019 S. 3RD ANIMAL CONTROL	1895 - clean out	170'							Line flat collects debris
21	725 KIOWA STREET	112.3 - 151.1	195'							Grease and rag buildup

## Colette Kiszka

---

**From:** Mike McDonald  
**Sent:** Wednesday, January 06, 2021 12:54 PM  
**To:** Colette Kiszka; Hal Burdette  
**Subject:** Fwd: Leavenworth Updated Data

[Get Outlook for Android](#)

---

**From:** Steve Bieranowski <Steve.Bieranowski@homeserveusa.com>  
**Sent:** Wednesday, January 6, 2021 12:14:49 PM  
**To:** Mike McDonald <MMcDonald@firstcity.org>  
**Subject:** Leavenworth Updated Data

Hi Mike,

Happy New Year!

Believe is the updated information that I sent over this past July. Please let me know if there is anything further I can do to assist.

- How many OUTSIDE SEWERLINE policies were there Dec31 2020 (or Jan 1 2021)  
325
- How many OUTSIDE SEWERLINE polices were there June 30 2020  
319
- How many NEW Accounts in the same time period  
(6/30/20 – 12/31/20)  
11 New Customers joined over the above timeframe, there were 91 new policies (35 SSL),
- How many repairs  
(6/30/20 – 12/31/20)  
28 covered claims for a total of \$14,714  
SSL Only: 18 Claims, \$8,722



**NLC Service Line  
Warranty Program**

SERVLINE

HomeServe

**Steve Bieranowski**  
Account Manager  
Office: 724-749-1048  
Mobile: 347-551-0244  
[steve.bieranowski@homeserveusa.com](mailto:steve.bieranowski@homeserveusa.com)

**Disclaimer:** This email and all files transmitted with may be confidential and intended solely for the use of the individual or entity to whom they are addressed. The unauthorized use, dissemination, distribution or reproduction of this email, including attachment(s), is prohibited and may be unlawful. If you are not an intended recipient, please delete this email, including attachment(s). ©HomeServe 2021.



Welcome, leavenworth

[Logout](#)



Leavenworth, KS



# Partner Reporting Dashboard

Back to Partner Select Page

Leavenworth, KS

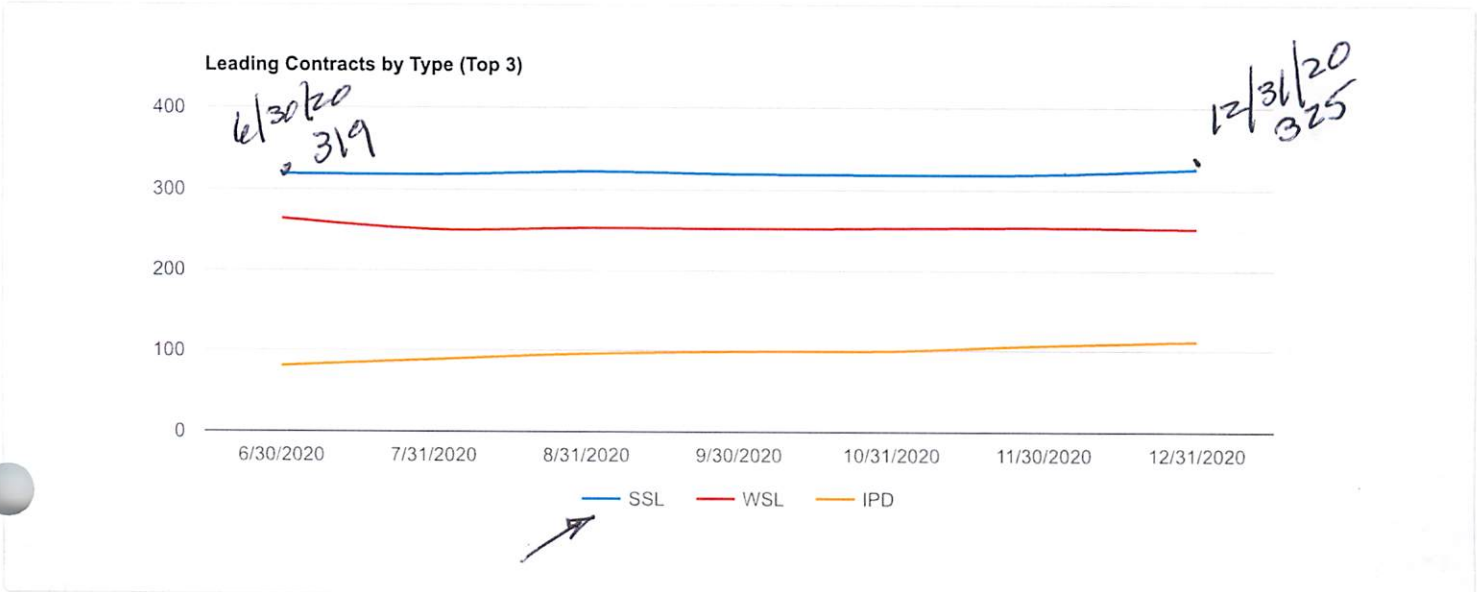
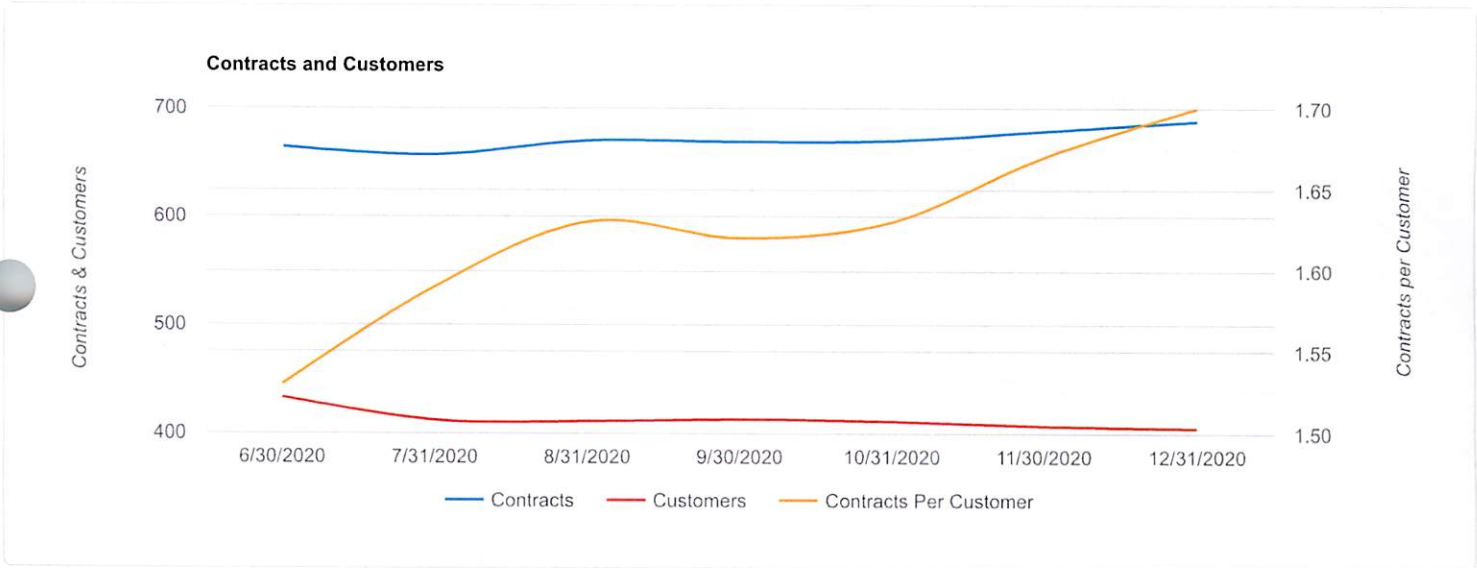
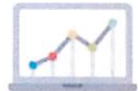
Date Start

2020-06-30

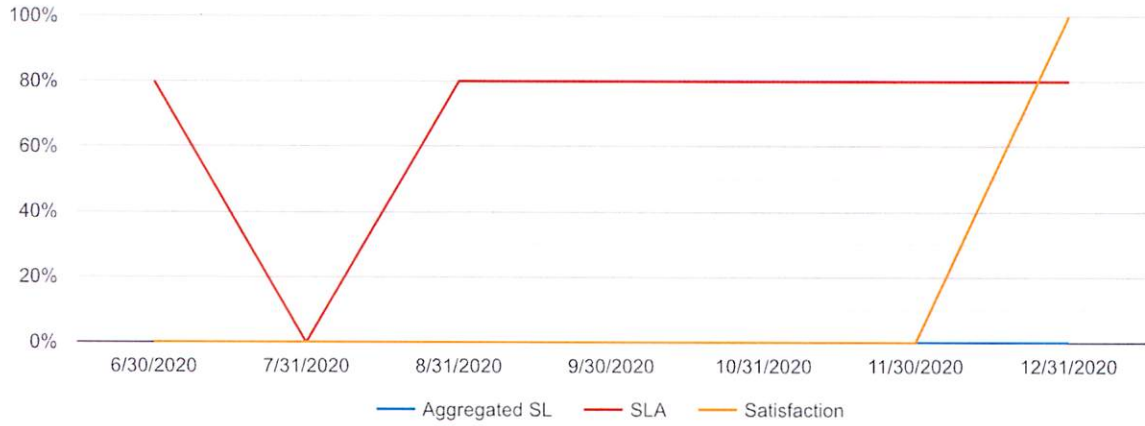
Date End

2020-12-31

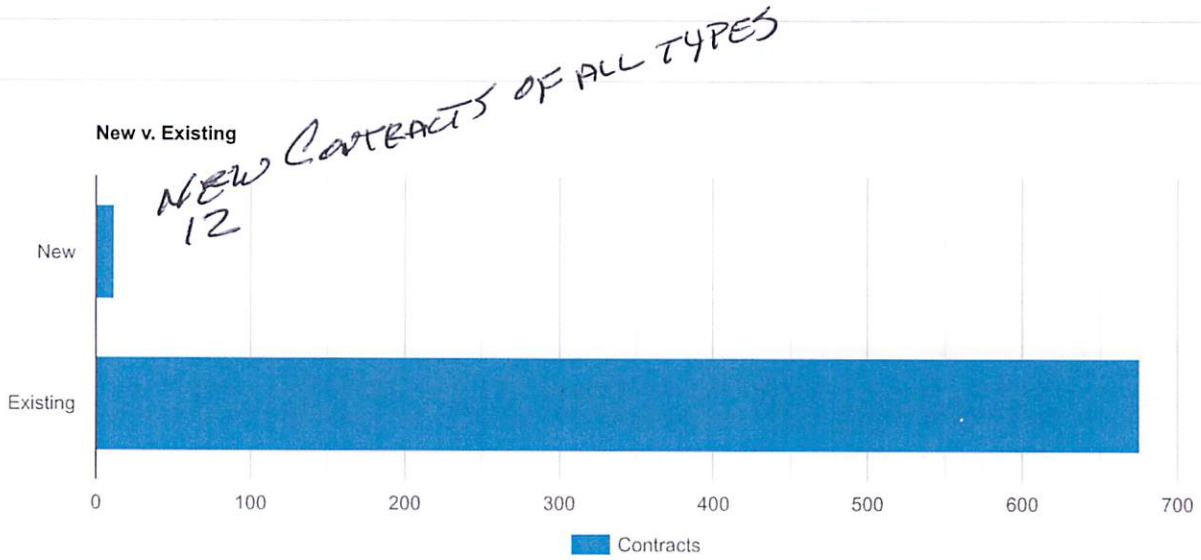
Filter



### Service Levels And Satisfaction



### New v. Existing



### Rolling Complaints by Type