



Welcome To Your City Commission Meeting - Please turn off or silence all cell phones during the commission meeting.
Meetings are televised everyday on Channel 2 at 7 p.m. and midnight and available for viewing on YouTube

Call to Order – Pledge of Allegiance Followed by Silent Meditation

OLD BUSINESS:

Consideration of Previous Meeting Minutes:

- 1. Minutes from August 13, 2019 Regular Meeting **Action:** Motion (pg. 2)

Second Consideration Ordinances:

- 2. Second Consideration Ordinance 8108 Uniform Public Offense Code 2019 **Action:** Roll Call Vote (pg. 9)
- 3. Second Consideration Ordinance 8109 Standard Traffic Ordinance 2019 **Action:** Roll Call Vote (pg. 14)
- 4. Second Consideration Ordinance 8110 Intersection Traffic Control Devices 2019 **Action:** Roll Call Vote (pg. 17)
- 5. Second Consideration Ordinance 8111 Demolition Assessments **Action:** Roll Call Vote (pg. 35)
- 6. Second Consideration Ordinance 8112 Nuisance Assessments **Action:** Roll Call Vote (pg. 38)

NEW BUSINESS:

Citizen Participation: *(i.e. Items not listed on the agenda or receipt of petitions- Please state your name and address)*

General Items

- 7. Review 1021 S 2nd and 400 N 5th Street- Properties on Demolition List **Action:** Motion (pg. 44)
- 8. Employee Benefits Plan Renewal **Action:** Motion (pg. 52)
- 9. Revision to Personnel Policy Manual **Action:** Motion (pg. 54)
- 10. Mayor’s Appointments **Action:** Motion (pg. 57)

Resolutions:

- 11. Resolution B-2231-Set Public Hearing-Fire Damaged House 228-230 Ottawa St **Action:** Motion (pg. 58)

Consent Agenda:

Claims for August 10, 2019 through August 23, 2019, in the amount of \$974,652.00; Net amount for Payroll #17 effective August 16, 2019, in the amount of \$364,671.86; (Includes Police & Fire Pension in the amount of \$11,572.36).

Action: Motion

Other:

Adjourn

Action: Motion



CALL TO ORDER - The Governing Body met in regular session and the following commission members were present: Mayor Jermaine Wilson, Mayor Pro-Tem Myron J. (Mike) Griswold, Commissioners Nancy Bauder, Larry Dedeke and Mark Preisinger.

Others present: City Manager Paul Kramer, Public Works Director Mike McDonald, Deputy Public Works Director Mike Hooper, Solid Waste Foreman Steve King, Police Chief Pat Kitchens, Fire Chief Gary Birch, Planning and Community Development Director Julie Hurley, Community Development Coordinator Mary Dwyer, Finance Director Ruby Maline, Deputy Finance Director Brandon Mills, Public Information Officer Melissa Bower, Deputy City Clerk Cary L. Collins, City Attorney David E. Waters and City Clerk Carla K. Williamson.

Mayor Jermaine Wilson called the meeting to order. Members from Boy Scout Troup 167 led the pledge of allegiance followed by silent meditation.

PRESENTATIONS:

Mayor's Awards

Mayor's Awards were presented to Sonya Gordon and Olivia Pratt

OLD BUSINESS:

Consideration of Previous Meeting Minutes:

Commissioner Dedeke moved to approve the minutes from the July 23, 2019 regular meeting and August 6, 2019 special meeting as presented. Commissioner Preisinger seconded the motion and the motion was unanimously approved. The Mayor declared the motion carried 5-0.

NEW BUSINESS:

Citizen Participation:

Dr. Lisa Nicholson -16931 Mt Olivet Road-OB/GYN working in Leavenworth

- Discussed the recent decision of St Luke's hospital to no longer have labor and delivery services
- Discussed importance of women's health care in the community
- Would like support from the City to assist with funding

Jessica Lisk- 2039 Ottawa Street

- Must now travel 45 minutes to deliver her baby
- Suffering because OB/GYN's are leaving Kansas

Commissioner Bauder asked Dr. Nicholson to contact her directly to assist with efforts.

Elaine Gann – 1215 9th Avenue

- Addressed concerns about an incident on June 14, 2019 involving a city licensed tree trimmer

- Would like the insurance information
- Thinks the city misrepresents that tree trimmers are licensed, bonded and insured

The Commission asked Mr. Kramer to provide additional information to them.

General Items:

Review Properties on Demolition List Given 90 Day Extensions – Planning and Community Development Director Julie Hurley presented an update on properties given an extension to allow for completion of work. The extensions were given on May 14, 2019 by the Commission in conjunction with the adoption of Resolution B-2220. 795 Spruce was later given an extension after action was filed in district court by the property owner to halt demolition of the structure.

1. **905 Washington** – Single family house
Owner in process of obtaining utility disconnects to demolish the property on his own.
Jeremy Bowen – owner, lives at 113 Ethel Lane Lansing
Has been waiting on gas company to disconnect
60-day extension given
2. **1605 Terry** – Single family house
Permits issued for siding, roof, and upgraded electrical service. Work ongoing.
Kevin Lis owner - gave update on repairs
60-day extension given
3. **514 Linn** – Single family house
Permit issued for roof, which has been installed. No other visible work complete.
Marcus Bray - Pride Properties gave update on repairs and status of bids
60-day extension given
4. **603 Rees** – Single family house
No visible change, no permits issued. Work not complete.
No communication with owner
Owner not present
Proceed with Demolition
5. **795 Spruce** – Single family house
Commission approved this property for demolition on May 14, 2019. The owner subsequently filed action in district court to halt the demolition. The court was unable to hold a hearing due to the fact that any business entity is required by Kansas state law to have an attorney to appear in a lawsuit, which the owner had not done. The court continued the hearing to August 21, 2019 to allow time for the owner to either complete repairs or retain an attorney. The owner signed a remediation agreement stipulating repairs to be made by this date and a repayment plan for costs already incurred by the City. The City has been unable to verify sewer connection status of the property and has requested that the owner retain a licensed plumber to verify the connection status, which has not been done to date. The City cannot authorize water service to be reconnected until the sewer connection status is verified, and no permits have been issued.

Jed Knighten addressed the Commission

- Would like to take care of the issue and feels most work has been done
- Permit revoked because of sewer
- Outside appearance has been made better and looking good
- Would like permit to be re-instated

Staff will bring back to the Commission after court action

6. **1021 S. 2nd Street** – Single family house

No visible change, no permits issued. Work not complete.

Owner not present

Proceed with demolition

7. **1214 9th Avenue** – Single family house

All work has been completed.

Gab Connor present

Remove from demolition list

8. **305 N. 2nd Street** – Single family house

Work in process. Permits issued for interior renovations and siding.

60-day extension given

9. **326 Osage** – Single family house

Under new ownership. Work ongoing. Permits for electrical work, miscellaneous repairs, windows, interior renovations and structural repairs have been issued.

60-day extension given

10. **400 N. 5th Street** – Mixed use building

No visible change, no permits issued. Work not complete.

Mark Swope representative of the property owner present

Reviewed plan for rehabilitating the property

Will come back to the Commission in two weeks with signed remediation from the owner to consider action

11. **787 Shawnee Street** – Single family house

Under new ownership. Work ongoing. Permits issued for roof and interior/exterior renovation.

60-day extension given

12. **219 Miami** - Shed only

Minimal change, no permits issued. Work not complete.

Update from Staff that work has been completed

Remove from demolition list

Commissioner Preisinger made the motion based on the decisions by the commission: 60-day extension given to 905 Washington, 1605 Terry, 514 Linn, 305 N. 2nd Street, 326 Osage, 787 Shawnee Street; proceed with the demolition of 603 Rees, 1021 S 2nd Street; remove from the demolition list 1214 9th Avenue, and 219 Miami; 795 Spruce will come back to the Commission after action has been taken by the court; and 400

N 5th will come back to the City Commission on August 27th for review of a signed remediation agreement. Commissioner Bauder seconded the motion and the motion was unanimously approved. The Mayor declared the motion carried 5-0.

Consider Sign Appeal 5000 10th Avenue (Walmart) – City Manager Paul Kramer stated that the item needs to be removed from the agenda and heard by the Board of Zoning appeals.

Commissioner Bauder moved to remove the sign appeal item from the agenda. Commissioner Dedeke seconded the motion and the motion was unanimously approved. The Mayor declared the motion carried 5-0.

Consider Approval of the Annual Edward Byrne Memorial Justice Assistance Grant – Police Chief Pat Kitchens presented for approval the authority to apply for the 2019 Edward Byrne Memorial Justice Assistance Grant in the amount of \$23,873.00. The grant will be shared with Leavenworth County as required by the grant. The City of Leavenworth will receive \$13,873.00 and Leavenworth County will receive \$10,000.00. The City must apply for the grant on behalf of both entities. The approval by the City Commission will give authority to the City Manager and City Attorney to sign an inter local agreement with Leavenworth County and will further allow the Mayor to sign an additional document entitled “Certifications and Assurances” as the Chief Executive of the applicant government.

Commissioner Preisinger moved to authorize the police department to apply for the 2019 Edward Byrne Memorial Justice Assistance Grant as presented. Commissioner Dedeke seconded the motion and the motion was unanimously approved. The Mayor declared the motion carried 5-0.

Mayor’s Appointments

Mayor Jermaine Wilson moved to recommend the following appointments: to the Community Development Advisory Board reappoint Kathryn Schiller, Bobbie Snyder and Ralph Taylor to terms ending August 31, 2022. Commissioner Bauder seconded the motion and the motion was unanimously approved. The Mayor declared the motion carried 5-0.

Public Hearing 2020 Budget

Open Public Hearing:

Commissioner Bauder moved to open the public hearing. Commissioner Dedeke seconded the motion and the motion was unanimously approved. The Mayor declared the motion carried 5-0.

Presentation of the 2020 Budget:

City Manager Paul Kramer reviewed the budget and Capital Improvements Program

Public Comments:

Matthew Nojonen- Leavenworth Library Director

- Requested an additional \$10,000 to the library budget for employee benefits

Close Public Hearing:

Commissioner Dedeke moved to close the public hearing. Commissioner Bauder seconded the motion and the motion was unanimously approved. The Mayor declared the motion carried 5-0.

Commissioner Dedeke moved to adopt the proposed 2020 budget without amendments. Commissioner Bauder seconded the motion and the motion was unanimously approved. The Mayor declared the motion carried 5-0.

Commissioner Bauder moved to adopt Resolution B-2229; Housing Budget. Commissioner Preisinger seconded the motion and the motion was unanimously approved. The Mayor declared the motion carried 5-0.

Commissioner Preisinger moved to adopt the proposed 2020-2024 CIP without amendments. Commissioner Griswold seconded the motion and the motion was unanimously approved. The Mayor declared the motion carried 5-0.

Resolutions:

Consider Resolution B-2230 Camp Leavenworth Festival Alcohol Friendly Special Event – City Clerk Carla Williamson presented for consideration a resolution approving the closure of streets for the 2019 Camp Leavenworth Festival and approve the area as alcohol friendly. The festival will be held September 20 - 21, 2019.

Commissioner Dedeke moved to adopt Resolution B-2230. Commissioner Griswold seconded the motion and the motion was unanimously approved. The Mayor declared the motion carried 5-0.

Bids, Contracts and Agreements:

Consider Inspection Contract with Affinis for Thornton Street Improvements Project – Public Works Director Mike McDonald presented for consideration the Inspection contract with Affinis for the Thornton Street Project. Staff recommends approval in the amount not to exceed \$350,142.00. Kristin Leathers from Affinis was present and answered questions posed by the city commission regarding inspections services.

Commissioner Bauder moved to approve the construction services agreement with Affinis for the inspection of the Thornton Street Improvements Project in the amount not to exceed \$350,142.00. Commissioner Dedeke seconded the motion and the motion was unanimously approved. The Mayor declared the motion carried 5-0.

Consider Renewal of the Waste Management Contract for 2020 Services - Public Works Director Mike McDonald presented for consideration the renewal of the Waste Management Contract effective January 1, 2020 at \$24.72 per ton for landfill services. The Mayor will reach out to the County to start discussions about the use of the county transfer station.

Commissioner Preisinger moved to approve the contract for landfill services with Waste Management for 2020 in the amount of \$24.72 per ton. Commissioner Griswold seconded the motion and the motion was unanimously approved. The Mayor declared the motion carried 5-0.

Change Order No. 2 to Contract 2018-69; Linaweaver, Related to 16th Terrace & Thornton Phase 1 Detention Project- Public Works Director Mike McDonald presented for approval change order No. 2 with Linaweaver for the 16th Terrace & Thornton Phase 1 Detention Project in the amount of \$1,335.00.

Commissioner Preisinger moved to approve change order No. 2 to contract 2018-69 with Linaweaver for the 16th Terrace & Thornton Phase 1 Detention Project in an amount not to exceed \$1,335.00. Commissioner Dedeke seconded the motion and the motion was unanimously approved. The Mayor declared the motion carried 5-0.

First Consideration Ordinance:

First Consideration Ordinance Demolition Assessments – Deputy City Clerk Cary Collins presented for first consideration an ordinance to levy special assessments against certain properties to cover the costs incurred by the City for demolition of the structures.

There was a consensus by the City Commission to place on first consideration.

First Consideration Ordinance Nuisance Assessments - Deputy City Clerk Cary Collins presented for first consideration an ordinance to levy special assessments against certain properties to cover the costs incurred by the City for nuisance abatements.

There was a consensus by the City Commission to place on first consideration.

First Consideration Ordinance Uniform Public Offense Code 2019 – Police Chief Pat Kitchens presented for first consideration an ordinance to adopt the 2019 Uniform Public Offense Code (UPOC) published by the League of Kansas Municipalities. Chief Kitchens reviewed the changes to the 2019 UPOC. Staff would recommend that in addition to the changes listed in the attached draft ordinance that the City also exempt out of section 11.15 related to dangerous animals at large. By exempting out of this section, the City Code of Ordinances, which is more comprehensive and strict, would be followed. The ordinance will be modified to reflect these changes before it comes back for second consideration and approval.

There was a consensus by the City Commission to place on first consideration.

First Consideration Ordinance Standard Traffic Ordinance 2019 - Police Chief Pat Kitchens presented for first consideration an ordinance to adopt the 2019 Standard Traffic Ordinance (STO) published by the League of Kansas Municipalities. Chief Kitchens reviewed the changes to the 2019 STO. Staff recommends omitting section 110.2.2 related to allowing solicitations of contributions from public streets. This omission is included in the draft ordinance provided in the agenda packet.

There was a consensus by the City Commission to place on first consideration.

First Consideration Ordinance Intersection Traffic Control Device Master Index 2019 - Police Chief Pat Kitchens presented for first consideration an ordinance to adopt the 2019 Intersection Traffic Control Device Master Index published by the City. Chief Kitchens reviewed the changes associated with the West Glen subdivision.

There was a consensus by the City Commission to place on first consideration.

CONSENT AGENDA:

Commissioner Bauder moved to approve claims for July 20, 2019 through August 9, 2019, in the amount of \$1,398,736.89; Net amount for Payroll #16 effective August 2, 2019, in the amount of \$ 354,310.46; (No Police & Fire Pension). Commissioner Preisinger seconded the motion and the motion was unanimously approved. The Mayor declared the motion carried 5-0.

Other:

City Manager Paul Kramer:

- MPRA a non-profit from Fort Leavenworth completed the 3 mile creek clean up did a great job
- Camp Leavenworth website has been updated with music and events; posters will go up soon at all the local businesses
- Parks and Recreation Department repaired park benches throughout the city

Executive Session:

Executive Session – Security Matters Exception per K.S.A. 75-4319 (b) (12) (D)

Commissioner Preisinger moved to recess into executive session to discuss security measures pursuant to the *discussion of matters relating to security measures, private property or persons* exception per K.S.A. 75-4319 (b) (12) (D). The open meeting to resume in the City Commission Chambers at 9:37 pm by the clock in the City Commission Chambers. City Manager Paul Kramer, Police Chief Pat Kitchens and City Attorney David Waters are requested to be present during the Executive Session. No action is expected to be taken after the session. Commissioner Bauder seconded the motion and was unanimously approved. The Mayor declared the motion carried 5-0.

The City Commission returned to open session at 9:37 p.m. with no action taken.

Adjourn:

Commissioner Dedeke moved to adjourn the meeting. Commissioner Bauder seconded the motion and the motion was unanimously approved.

Time Meeting Adjourned 9:37 p.m.

Minutes taken by City Clerk Carla K. Williamson, CMC

POLICY REPORT
SECOND CONSIDERATION ORDINANCE 8108
ADOPTING THE UNIFORM PUBLIC OFFENSE CODE FOR KANSAS CITIES
2019 EDITION

AUGUST 27, 2019



Carla K. Williamson, CMC
City Clerk



Paul Kramer
City Manager

BACKGROUND:

At the August 13, 2019 City Commission meeting the City Commission reviewed and placed on first consideration:

AN ORDINANCE AMENDING CHAPTER 70 OF THE CODE OF ORDINANCES REGULATING PUBLIC OFFENSES WITHIN THE CORPORATE LIMITS OF THE CITY OF LEAVENWORTH, KANSAS; INCORPORATING BY REFERENCE THE "UNIFORM PUBLIC OFFENSE CODE FOR KANSAS CITIES" EDITION OF 2019, WITH CERTAIN OMISSIONS AND CHANGES.

Since first consideration is has been noted that section 11.15 "*Permitting a Dangerous Animal to be at Large*" is omitted and deleted. The City Code of Ordinances related to this topic will be followed.

Ordinance No. 8108 is now presented for second consideration and requires a roll call vote.

ATTACHMENTS:

- Ordinance No. 8108

(Summary Published in the Leavenworth Times on August 30, 2019)

ORDINANCE NO. 8108

AN ORDINANCE AMENDING CHAPTER 70 OF THE CODE OF ORDINANCES REGULATING PUBLIC OFFENSES WITHIN THE CORPORATE LIMITS OF THE CITY OF LEAVENWORTH, KANSAS; INCORPORATING BY REFERENCE THE "UNIFORM PUBLIC OFFENSE CODE FOR KANSAS CITIES" EDITION OF 2019, WITH CERTAIN OMISSIONS AND CHANGES.

BE IT ORDAINED BY THE GOVERNING BODY OF THE CITY OF LEAVENWORTH, KANSAS:

Section 1. That the Code of Ordinances, City of Leavenworth, Kansas, Chapter 70, Offenses, Section 70-1, is hereby deleted in its entirety and amended to read as follows:

Sec. 70-1 Incorporating Uniform Public Offense Code – Incorporated by reference.

Is hereby incorporated by reference for the purpose of regulating public offenses within the corporate limits of the City of Leavenworth, Kansas, that certain code known as the *Uniform Public Offense Code for Kansas Cities*, Edition of 2019 prepared and published in book form by the League of Kansas Municipalities, Topeka, Kansas, save and except such articles, sections, parts or portions as are hereinafter omitted, deleted, notified or changed. One official copy of said *Uniform Public Offense Code* shall be marked or stamped "Official Copy as Adopted by Ordinance No. 8108" with all sections or portions thereof intended to be omitted or changed clearly marked to show any such omission or change and to which shall be attached a copy of this Ordinance and filed with the City Clerk to be open to inspection and available to the public at all reasonable hours.

Section 2. That the Code of Ordinances, City of Leavenworth, Kansas, Chapter 70, Offenses, Section 70-2, is hereby deleted in its entirety and amended to read as follows:

Sec. 70-2 Same-amendments and omissions.

Notwithstanding the foregoing, Section 5.7, and Section 10.6 of said *Uniform Public Offense Code* are hereby deleted in their entirety and amended to read as follows and Section 11.15 of said *Uniform Public Offense Code* is hereby declared to be and is omitted and deleted.

5.7 SELLING, GIVING OR FURNISHING CIGARETTES OR TOBACCO PRODUCTS TO A PERSON UNDER 21 YEARS OF AGE.

- (a) It shall be unlawful for any person to:
- (1) Sell, furnish or distribute to any person under the age of 21 years any cigarettes, electronic cigarettes, or tobacco products; or
 - (2) Buy any cigarettes, electronic cigarettes, or tobacco products for any person under 21 years of age.

- (b) It shall be a defense to a prosecution under subsection (a) of this section if:
- (1) The defendant is a licensed retail dealer, or employee thereof, or a person authorized by law to distribute samples;
 - (2) The defendant sold, furnished or distributed the cigarettes, electronic cigarettes, or tobacco products to the person under 21 years of age with reasonable cause to believe the person was of legal age to purchase or receive cigarettes, electronic cigarettes or tobacco products; and
 - (3) To purchase or receive the cigarettes, electronic cigarettes, or tobacco products, the person under 21 years of age exhibited to the defendant a driver's license, Kansas non driver's identification card or other official or apparently official document containing a photograph of the person and purporting to establish that the person was of legal age to purchase or receive cigarettes, electronic cigarettes, or tobacco products.
- (c) It shall be a defense to a prosecution under subsection (a) of this section if:
- (1) The defendant engages in the lawful sale, furnishing or distribution of cigarettes, electronic cigarettes, or tobacco products by mail; and
 - (2) The defendant sold, furnished or distributed the cigarettes, electronic cigarettes, or tobacco products to the person by mail only after the person had provided to the defendant an unsworn declaration, conforming to K.S.A. 53-601, that the person was 21 or more years of age.
- (d) For purposes of this section, the person who violates this section shall be the individual directly selling, furnishing or distributing the cigarettes, electronic cigarettes, or tobacco products to any person under 21 years of age, or the retail dealer who has actual knowledge of such selling, furnishing or distributing by such individual or both.
- (e) Notwithstanding any separate definition in Sec. 1.1 of the *Uniform Public Offense Code for Kansas Cities*, the term *electronic cigarette* means a device that delivers nicotine or other substances to the person inhaling from the device, including but not limited to any electronic cigarette, cigar, pipe, or hookah, including any component, part, or accessory of such a device, whether or not sold separately. Electronic cigarette shall not include any products that have been approved by the United States Food and Drug Administration for sale as a tobacco cessation product or for other therapeutic purposes where such product is marketed and sold solely for such an approved purpose.

- (f) As used in this section, *sale* means any transfer of title or possession or both, exchange, barter, distribution or gift of cigarettes or tobacco products, with or without consideration.
- (g) It is unlawful for any person who is a retail dealer to fail to post and maintain in a conspicuous place in the dealer's establishment the following notice: "BY LAW, CIGARETTES AND TOBACCO PRODUCTS MAY BE SOLD ONLY TO PERSONS 21 YEARS OF AGE AND OLDER." Retailer shall mean any person, firm or corporation engaged in the business of selling tobacco products, alternative nicotine products, or vapor products by personal handling to an ultimate customer or consumer.

Violation of this section is a class B violation punishable by a minimum fine of \$200.

10.6 AIR GUN, AIR RIFLE, BOW AND ARROW, SLINGSHOT OR BB GUN.

The unlawful operation of an air gun, air rifle, bow and arrow, slingshot or BB gun is the shooting, discharging or operating of any air gun, air rifle, bow and arrow, slingshot or BB gun, within the city, except by permit authorized by the city for deer hunting or within the confines of a building or other structure from which to projectiles cannot escape; provided, that a bow and arrow may be used in an open air archery range meeting the following requirements.

- (1) An open, flat plain with a clear and unobstructed field of distance. The maximum distance between archer and target shall be no more than 40 yards.
- (2) Target shall be situated so that any path, target, road or building is located with a 30 degree arc centered perpendicular with the shooter and target extending a minimum of 40 yards behind the target.
- (3) A target backstop be constructed which is at least 12 feet wide and 8 feet high behind each target. The backstop is to be constructed and maintained using a material, which would capture and trap arrows shot into it. The material used must not cause arrows to be deflected in another direction.
- (4) A secondary earthen backstop consisting of an earthen berm, material hill or excavated face shall be provided. The secondary backstop should be at least 30 feet wide and 16 feet high.
- (5) Operation of an archery range shall be allowed between the hours of sunrise and sunset.

Unlawful operation of an air gun, air rifle, bow and arrow, slingshot or BB gun is a class C violation.

Section 11.15 PERMITTING A DANGEROUS ANIMAL TO BE AT LARGE

Sec. 11.15 Permitting a Dangerous Animal to be at Large of said Uniform Public Offense Code is hereby declared to be omitted and deleted.

Section 3. REPEAL. Sections 70-1 and 70-2 of Chapter 70, Offenses, of the Code of Ordinances of the City of Leavenworth, Kansas, in existence as of and prior to the adoption of this ordinance, are hereby repealed.

Section 4. EFFECTIVE DATE. This ordinance shall take effect and be in force from and after its publication in the official city newspaper.

PASSED and APPROVED by the Governing Body on this 27th day of August 2019.

Jermaine Wilson, Mayor

{Seal}

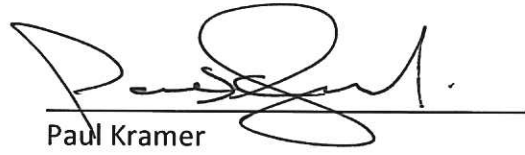
ATTEST:

Carla K. Williamson, CMC, City Clerk

**POLICY REPORT
SECOND CONSIDERATION ORDINANCE 8109
ADOPTING THE STANDARD TRAFFIC ORDINANCE FOR KANSAS CITIES
2019 EDITION**

AUGUST 27, 2019


Carla K. Williamson, CMC
City Clerk


Paul Kramer
City Manager

BACKGROUND:

At the August 13, 2019 City Commission meeting the City Commission reviewed and placed on first consideration:

**AN ORDINANCE AMENDING CHAPTER 110 SECTIONS 110-1 – 110-2.1 OF THE
CODE OF ORDINANCES REGULATING TRAFFIC WITHIN THE CORPORATE LIMITS OF
THE CITY OF LEAVENWORTH, KANSAS; INCORPORATING BY REFERENCE THE
STANDARD TRAFFIC ORDINANCE FOR KANSAS CITIES, EDITION OF 2019, WITH
CERTAIN OMISSIONS, CHANGES, AND ADDITIONS**

There have been no changes since first consideration.

Ordinance No. 8109 is now presented for second consideration and requires a roll call vote.

ATTACHMENTS:

- Ordinance No. 8109

(Summary Published in the Leavenworth Times on August 30, 2019)

ORDINANCE 8109

AN ORDINANCE AMENDING CHAPTER 110 SECTIONS 110-1 – 110-2.1 OF THE CODE OF ORDINANCES REGULATING TRAFFIC WITHIN THE CORPORATE LIMITS OF THE CITY OF LEAVENWORTH, KANSAS; INCORPORATING BY REFERENCE THE STANDARD TRAFFIC ORDINANCE FOR KANSAS CITIES, EDITION OF 2019, WITH CERTAIN OMISSIONS, CHANGES, AND ADDITIONS.

BE IT ORDAINED BY THE GOVERNING BODY OF THE CITY OF LEAVENWORTH, KANSAS:

Section 1. That the Code of Ordinances, City of Leavenworth, Kansas, Chapter 110, Traffic and Vehicles, Article I; In General, Section 110-1 through Section 110-2.1 shall be amended to read as follows:

Sec. 110-1 Standard Traffic Ordinance for Kansas Cities – Adopted.

There is hereby incorporated by reference for the purpose of regulating traffic within the corporate limits of the City of Leavenworth Kansas that certain standard traffic ordinance known as the *Standard Traffic Ordinance* for Kansas Cities, Edition of 2019, prepared and published in book form by the League of Kansas Municipalities, Topeka, Kansas, save and except such articles, sections, parts or portions as are hereafter omitted, deleted, modified, or changed.

Sec. 110-2 Same-Marked copies on file.

One copy of said *Standard Traffic Ordinance* shall be marked or stamped “Official Copy as Adopted by Ordinance 8109” with all sections and portions thereof intended to be omitted or changed clearly marked to show any such omission or change and to which shall be attached a copy of this ordinance, and filed with the City Clerk to be open to inspection and available to the public at all reasonable business hours. The police department, municipal judge, and all administrative departments of the city charged with enforcement of the ordinance shall be supplied at the cost of the city, such number of official copies as such *Standard Traffic Ordinance* similarly marked, as may be deemed expedient.

Sec. 110.2.1 Same-amendments.

Article 14. Miscellaneous Rules, Section 114.5 be amended, adding, as follows:

(e) As provided by subsection (a) (2), it shall be unlawful to operate of worksite utility vehicle except for public safety and city maintenance staff within the corporate limits of the city.

Article 15. Operation of Bicycles, Motorized Bicycles, and Play Vehicles. Section 135.1 be amended, adding the following:

(e) As provided in subsection (c) “it is unlawful to operate, or for the owner to permit the operation of an electric-assisted scooter upon a street, highway, public parking lot, or public parks area.”

Sec. 110.2.2 Omitting.

Sec. 69 (d): Article II, Pedestrians, of said Standard Traffic Ordinance relating to city permits for soliciting of contributions is hereby declared to be omitted and deleted.

Section 2. That all ordinances found to be in conflict with the said “*Standard Traffic Ordinance for Kansas Cities, Edition of 2019*” be and the same are hereby repealed.

Section 3. That this ordinance shall take effect and be in force from and after its passage, approval, and publication as provided by law.

PASSED and APPROVED by the Governing Body on this 27th day of August 2019.

Jermaine Wilson, Mayor

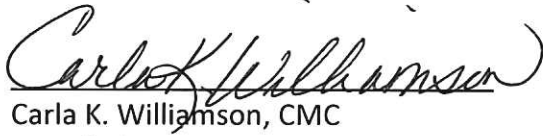
{Seal}

ATTEST:

City Clerk Carla K. Williamson, CMC

**POLICY REPORT
SECOND CONSIDERATION ORDINANCE 8110
ADOPTING THE 2019 INTERSECTION CONTROL DEVICE MASTER INDEX**

AUGUST 27, 2019



Carla K. Williamson, CMC
City Clerk



Paul Kramer
City Manager

BACKGROUND:

At the August 13, 2019 City Commission meeting the City Commission reviewed and placed on first consideration:

AN ORDINANCE AMENDING CHAPTER 110 SEC. 110-44 OF THE CODE OF ORDINANCES REGULATING INTERSECTION TRAFFIC CONTROL DEVICES WITHIN THE CORPORATE LIMITS OF THE CITY OF LEAVENWORTH, KANSAS; INCORPORATING BY REFERENCE THE "2019 INTERSECTION TRAFFIC CONTROL DEVICE MASTER INDEX".

There have been no changes since first consideration.

Ordinance No. 8110 is now presented for second consideration and requires a roll call vote.

ATTACHMENTS:

- Ordinance No. 8110

(Summary Published in the Leavenworth Times on August 30, 2019)

ORDINANCE NO. 8110

AN ORDINANCE AMENDING CHAPTER 110 SEC. 110-44 OF THE CODE OF ORDINANCES REGULATING INTERSECTION TRAFFIC CONTROL DEVICES WITHIN THE CORPORATE LIMITS OF THE CITY OF LEAVENWORTH, KANSAS; INCORPORATING BY REFERENCE THE “2019 INTERSECTION TRAFFIC CONTROL DEVICE MASTER INDEX”.

BE IT ORDAINED BY THE GOVERNING BODY OF THE CITY OF LEAVENWORTH, KANSAS:

Section 1. That the Code of Ordinances, City of Leavenworth, Kansas Chapter 110, Traffic and Vehicles, Article II Local Traffic Regulations, Section 110-44 shall be amended to read as follows:

Section 110-44. Incorporating the Intersection Traffic Control Devices.

The “2019 Intersection Traffic Control Device Master Index” prepared and published by the city in book form for the purpose of regulating intersection traffic control devices within the city, is adopted as though fully set forth herein. One copy of the adopted index, marked “Official Copy as Adopted by ordinance 8110” and to which shall be attached a copy of said ordinance, shall be filed with the city clerk and available to the public for inspection at all reasonable business hours.

Section 2. That Section 110-44 amended herein and all ordinances found to be in conflict are hereby repealed.

Section 3. That this ordinance shall take effect and be in force from and after its passage, approval, and publication as provided by law.

PASSED and APPROVED by the Governing Body on this 27th day of August 2019.

Jermaine Wilson, Mayor

ATTEST:

City Clerk Carla K. Williamson, CMC

{SEAL}

2019 Intersection Traffic Control Device Master Index
Adopted by Ordinance No. 8110

Traffic Control Device	Intersection No.	Direction of Traffic Controlled	Intersection Name	NB	SB	EB	WB
SS	2	W	US73 OFF RAMP/SANTA FE TRAIL	0	0	0	SS
SS	7	E	US73 OFF RAMP/SANTA FE TRAIL	SS	SS	SS	SS
SS	7	S	METROPOLITAN AV/SANTA FE TRAIL	SS	SS	SS	SS
SS	8	N	US73 ON RAMP/N 20TH ST	SS	SS	SS	SS
SS	8	E	METROPOLITAN AVE / N 20TH ST	SS	SS	SS	SS
SS	9	E	METROPOLITAN-PAWNEE AVE / N 20TH ST	0	0	SS	SS
SS	9	W	METROPOLITAN-PAWNEE AVE / N 20TH ST	0	0	SS	SS
SS	10	W	N 20TH ST / DAKOTA ST	0	0	SS	SS
SS	10	E	N 20TH ST / DAKOTA ST	0	0	SS	SS
SS	11	N	DAKOTA ST / DENNY LN	SS	0	0	0
SS	12	S	N 18TH ST / DAKOTA ST	SS	SS	0	0
SS	12	N	N 18TH ST / DAKOTA ST	SS	SS	0	0
SS	13	S	PAWNEE ST / DAKOTA ST	0	SS	0	0
SS	14	S	N 16TH ST / DAKOTA ST (N)	0	SS	SS	0
SS	14	E	N 16TH ST / DAKOTA ST (N)	0	SS	SS	0
SS	15	W	N 16TH ST / PAWNEE ST (S)	0	0	0	SS
SS	16	E	N 16TH ST / PAWNEE ST (N)	0	0	SS	0
SS	16	S	N 16TH ST / PAWNEE ST (N)	0	0	SS	0
SS	17	E	METROPOLITAN AVE / N 16TH ST (S)	0	0	SS	0
SS	18	N	US 73 / N 16TH ST	SS	0	0	0
SS	19	N	METROPOLITAN AVE / N 14TH ST	SS	0	0	0
SS	20	W	N 14TH ST / CHEYENNE ST	0	0	0	SS
SS	21	W	N 14TH ST / PAWNEE ST	0	0	SS	SS
SS	21	E	N 14TH ST / PAWNEE ST	0	0	SS	SS
SS	22	W	N 14TH ST / DAKOTA ST	0	0	0	SS
SS	23	S	N 14TH ST / KIOWA ST	0	SS	0	0
SS	24	W	N 16TH ST / DAKOTA ST (S)	0	0	0	SS
SS	25	S	N 16TH ST / KIOWA ST	0	SS	0	0
SS	27	N	N 13TH TERR / KIOWA ST	SS	0	0	0
SS	28	N	METROPOLITAN AVE / N 13TH ST	SS	0	0	0
SS	29	N	METROPOLITAN AVE / N 12TH ST	SS	0	0	0
SS	30	N	METROPOLITAN AVE / N 11TH ST	SS	0	0	0
SS	31	N	METROPOLITAN AV / N 10TH ST	SS	0	0	0
SS	32	W	N 10TH ST / CHEYENNE ST	0	0	SS	SS
SS	32	E	N 10TH ST / CHEYENNE ST	0	0	SS	SS
SS	33	W	N 11TH ST / CHEYENNE ST	0	0	SS	SS
SS	33	E	N 11TH ST / CHEYENNE ST	0	0	SS	SS
SS	34	W	N 12TH ST / CHEYENNE ST	0	0	SS	SS
SS	34	E	N 12TH ST / CHEYENNE ST	0	0	SS	SS
SS	35	W	N 13TH ST / CHEYENNE ST	0	0	SS	SS
SS	35	E	N 13TH ST / CHEYENNE ST	0	0	SS	SS
SS	36	W	N 13TH ST / PAWNEE ST	0	0	SS	SS
SS	36	E	N 13TH ST / PAWNEE ST	0	0	SS	SS
SS	37	W	N 12TH ST / PAWNEE ST	0	0	SS	SS
SS	37	E	N 12TH ST / PAWNEE ST	0	0	SS	SS

2019 Intersection Traffic Control Device Master Index
Adopted by Ordinance No. 8110

Traffic Control Device	Intersection No.	Direction of Traffic Controlled	Intersection Name	NB	SB	EB	WB
SS	38	W	N 11TH ST / PAWNEE ST	0	0	SS	SS
SS	38	E	N 11TH ST / PAWNEE ST	0	0	SS	SS
SS	39	W	N 10TH ST / PAWNEE ST	0	0	SS	SS
SS	39	E	N 10TH ST / PAWNEE ST	0	0	SS	SS
SS	40	W	N 10TH ST / DAKOTA ST	0	0	SS	SS
SS	40	E	N 10TH ST / DAKOTA ST	0	0	SS	SS
SS	41	W	N 11TH ST / DAKOTA ST	0	0	SS	SS
SS	41	E	N 11TH ST / DAKOTA ST	0	0	SS	SS
SS	42	W	N 12TH ST / DAKOTA ST	0	0	SS	SS
SS	42	E	N 12TH ST / DAKOTA ST	0	0	SS	SS
SS	43	W	N 13TH ST / DAKOTA ST	0	0	SS	SS
SS	43	E	N 13TH ST / DAKOTA ST	0	0	SS	SS
SS	44	W	N 13TH ST / KIOWA ST	0	0	SS	SS
SS	44	E	N 13TH ST / KIOWA ST	0	0	SS	SS
SS	45	W	N 12TH ST / KIOWA ST	0	0	SS	SS
SS	45	E	N 12TH ST / KIOWA ST	0	0	SS	SS
SS	46	W	N 11TH ST / KIOWA ST	0	0	SS	SS
SS	46	E	N 11TH ST / KIOWA ST	0	0	SS	SS
SS	47	W	N 10TH ST / KIOWA ST	0	0	SS	SS
SS	47	E	N 10TH ST / KIOWA ST	0	0	SS	SS
SS	48	W	N 10TH ST / KICKAPOO ST	0	0	SS	SS
SS	48	E	N 10TH ST / KICKAPOO ST	0	0	SS	SS
SS	49	W	N 11TH ST / KICKAPOO ST	0	0	SS	SS
SS	49	E	N 11TH ST / KICKAPOO ST	0	0	SS	SS
SS	50	W	N 12TH ST / KICKAPOO ST	0	0	SS	SS
SS	50	E	N 12TH ST / KICKAPOO ST	0	0	SS	SS
SS	51	W	N 13TH ST / KICKAPOO ST	0	0	SS	SS
SS	51	E	N 13TH ST / KICKAPOO ST	0	0	SS	SS
SS	52	E	N 10TH ST / OTTAWA ST	0	0	SS	SS
SS	52	E	N 10TH ST / OTTAWA ST	0	0	SS	SS
SS	53	S	N 11TH ST / OTTAWA ST	SS	SS	0	0
SS	53	N	N 11TH ST / OTTAWA ST	SS	SS	0	0
SS	54	S	N 12TH ST / OTTAWA ST	SS	SS	0	0
SS	54	S	N 12TH ST / OTTAWA ST	SS	SS	0	0
SS	55	S	N 13TH ST / OTTAWA ST	SS	SS	0	0
SS	55	N	N 13TH ST / OTTAWA ST	SS	SS	0	0
SS	56	S	N 13TH TERR / OTTAWA ST	0	SS	0	0
SS	57	E	N 10TH ST / POTTAWATOMIE ST	0	0	SS	SS
SS	57	E	N 10TH ST / POTTAWATOMIE ST	0	0	SS	SS
SS	58	W	N 11TH ST / POTTAWATOMIE ST	0	0	SS	SS
SS	58	E	N 11TH ST / POTTAWATOMIE ST	0	0	SS	SS
SS	59	W	N 12TH ST / POTTAWATOMIE ST	0	0	SS	SS
SS	59	E	N 12TH ST / POTTAWATOMIE ST	0	0	SS	SS
SS	60	W	N 10TH ST / OSAGE ST	0	0	SS	SS
SS	60	E	N 10TH ST / OSAGE ST	0	0	SS	SS

2019 Intersection Traffic Control Device Master Index
Adopted by Ordinance No. 8110

Traffic Control Device	Intersection No.	Direction of Traffic Controlled	Intersection Name	NB	SB	EB	WB
SS	61	W	N 10TH ST / MIAMI ST	0	0	SS	SS
SS	61	E	N 10TH ST / MIAMI ST	0	0	SS	SS
SS	62	S	N 11TH ST / OSAGE ST	0	SS	0	0
SS	63	S	N 12TH ST / OSAGE ST	0	SS	0	0
SS	64	E	N 13TH ST / POTTAWATOMIE ST	0	0	SS	0
SS	65	W	N 13TH ST / OSAGE ST	0	0	SS	SS
SS	65	E	N 13TH ST / OSAGE ST	0	0	SS	SS
SS	68	N	N 16TH ST / OSAGE ST	SS	0	0	0
SS	68	N	N 16TH ST / OSAGE ST	SS	0	0	0
SS	69	W	N 17TH ST / OSAGE ST	0	0	0	SS
TL	70	2W	S 10TH ST / SHAWNEE ST	TL	TL	TL	TL
TL	70	2N	S 10TH ST / SHAWNEE ST	TL	TL	TL	TL
TL	70	2E	S 10TH ST / SHAWNEE ST	TL	TL	TL	TL
TL	70	2S	S 10TH ST / SHAWNEE ST	TL	TL	TL	TL
SS	71	S	11TH ST / SHAWNEE ST	SS	SS	0	0
SS	71	N	11TH ST / SHAWNEE ST	SS	SS	0	0
SS	72	N	S 12TH ST / SHAWNEE ST	SS	0	0	0
SS	73	S	S 13TH ST / SHAWNEE ST	SS	SS	0	0
SS	73	N	S 13TH ST / SHAWNEE ST	SS	SS	0	0
SS	74	W	N 13TH ST / SENCECA ST	0	0	0	SS
SS	75	S	S 14TH ST / SHAWNEE ST	SS	SS	0	0
SS	75	N	S 14TH ST / SHAWNEE ST	SS	SS	0	0
SS	76	EB	N 14th St / SENECA ST	0	0	SS	0
SS	81	W	HOPE ST / ALLEN ST	0	0	0	SS
SS	82	S	SHELDON ST / SHAWNEE ST	0	SS	0	0
SS	83	N	S 15TH ST / SHAWNEE ST	SS	0	0	0
SS	84	S	WESTERN ST / SHAWNEE ST	0	S	0	0
SS	85	S	ALLEN ST / SHAWNEE ST	0	SS	0	0
SS	86	N	S 16TH ST / SHAWNEE ST	SS	0	0	0
SS	87	N	SHAWNEE ST / LEAVENWORTH AVE	SS	0	0	0
SS	88	S	S 17TH ST / SHAWNEE ST	SS	SS	0	0
SS	88	N	S 17TH ST / SHAWNEE ST	SS	SS	0	0
SS	89	W	N 17TH ST / TERRY ST	0	0	SS	SS
SS	89	E	N 17TH ST / TERRY ST	0	0	SS	SS
SS	91	E	N 16TH ST / MICHAEL ST	0	0	SS	0
SS	92	EB	N 17TH ST / MIAMI ST	0	0	SS	0
SS	93	W	N 17TH ST / MICHAEL ST	0	0	0	SS
SS	94	W	N 17TH ST / MICHAEL ST	0	0	SS	0
SS	97	N	N 17TH ST / OTTAWA ST	SS	0	0	0
SS	98	S	N 18TH ST / OTTAWA ST	SS	SS	0	0
SS	98	N	N 18TH ST / OTTAWA ST	SS	SS	0	0
SS	99	N	N 19TH ST / OTTAWA ST	SS	0	0	0
SS	100	W	N 20TH ST / OTTAWA ST	0	0	SS	SS
SS	100	E	N 20TH ST / OTTAWA ST	0	0	SS	SS
SS	101	W	N 20TH ST / POTTAWATOMIE ST	0	0	0	SS

2019 Intersection Traffic Control Device Master Index
Adopted by Ordinance No. 8110

Traffic Control Device	Intersection No.	Direction of Traffic Controlled	Intersection Name	NB	SB	EB	WB
SS	103	E	N 18TH ST / OSAGE ST	0	0	SS	0
SS	104	SB	N 19TH ST / OSAGE ST	0	SS	0	0
SS	105	W	N 20TH ST / OSAGE ST	0	0	0	SS
SS	106	E	N 18TH ST / MIAMI ST	0	0	SS	0
SS	107	W	N 18TH ST / SENECA ST	0	0	SS	SS
SS	107	E	N 18TH ST / SENECA ST	0	0	SS	SS
SS	108	N	TOPEKA AVE / SHAWNEE ST	SS	0	0	0
SS	109	W	N 18TH ST / SHAWNEE ST	SS	SS	0	0
SS	109	E	N 18TH ST / SHAWNEE ST	SS	SS	0	0
SS	109	S	N 18TH ST / SHAWNEE ST	SS	SS	0	0
SS	109	N	N 18TH ST / SHAWNEE ST	SS	SS	0	0
SS	110	W	N 20TH ST / SHAWNEE ST	0	0	SS	SS
SS	110	E	N 20TH ST / SHAWNEE ST	0	0	SS	SS
SS	111	E	N20TH ST / SENECA ST (N)	0	0	SS	0
SS	111	E	N20TH ST / SENECA ST (N)	0	0	SS	0
SS	112	W	N 20TH ST / SENECA ST (S)	0	0	0	SS
SS	113	W	N 20TH ST / MIAMI ST	0	0	SS	SS
SS	113	E	N 20TH ST / MIAMI ST	0	0	SS	SS
SS	117	N	N 21 ST / SHAWNEE ST	SS	0	0	0
SS	119	N	N 22ND ST / OTTAWA ST	SS	0	0	0
SS	125	N	METROPOLITAN AV / N 9TH ST	SS	0	0	0
SS	126	N	METROPOLITAN AV / N 8TH ST	SS	0	0	0
SS	127	N	METRO AV / N BROADWAY ST	SS	0	0	0
TL	128	3E 1S	METRO AV / N 7TH ST	TL	TL	TL	TL
TL	128	2S	METRO AV / N 7TH ST	TL	TL	TL	TL
TL	128	2N	METRO AV / N 7TH ST	TL	TL	TL	TL
TL	128	3W	METRO AV / N 7TH ST	TL	TL	TL	TL
SS	129	N	METRO AV / N 6TH ST	SS	0	0	0
SS	130	N	METRO AV N 5TH ST	SS	0	0	0
TL	131	3N	METRO AV / N 4TH ST	TL	TL	TL	TL
TL	131	3W	METRO AV / N 4TH ST	TL	TL	TL	TL
TL	131	3S	METRO AV / N 4TH ST	TL	TL	TL	TL
TL	131	3E	METRO AV / N 4TH ST	TL	TL	TL	TL
SS	134	S	CHEYENNE CURV / DAKOTA ST	0	SS	0	0
SS	135	S	N 2ND ST / CHEYENNE ST	SS	SS	0	0
SS	135	N	N 2ND ST / CHEYENNE ST	SS	SS	0	0
SS	136	E	N 2ND ST / PAWNEE LN	0	0	SS	0
SS	137	W	N 2ND ST / DAKOTA ST	0	0	SS	SS
SS	137	E	N 2ND ST / DAKOTA ST	0	0	SS	SS
SS	138	W	N 3RD ST / DAKOTA ST	0	0	SS	SS
SS	138	E	N 3RD ST / DAKOTA ST	0	0	SS	SS
SS	139	E	N 3RD ST / PAWNEE ST	0	0	SS	0
SS	140	N	N 3RD ST / CHEYENNE ST	SS	0	0	0
SS	141	W	N 4TH ST / CHEYENNE ST	0	0	SS	SS
SS	142	W	N 4TH ST / PAWNEE ST	0	0	SS	SS

2019 Intersection Traffic Control Device Master Index
Adopted by Ordinance No. 8110

Traffic Control Device	Intersection No.	Direction of Traffic Controlled	Intersection Name	NB	SB	EB	WB
SS	142	E	N 4TH ST / PAWNEE ST	0	0	SS	SS
SS	143	W	N 4TH ST / DAKOTA ST	0	0	0	SS
TL	144	3N 1E	N 4TH ST / JOHNSON ST	TL	TL	TL	0
TL	144	1E	N 4TH ST / JOHNSON ST	TL	TL	TL	0
TL	144	3S	N 4TH ST / JOHNSON ST	TL	TL	TL	0
SS	146	E	N 5TH ST / DAKOTA ST	0	0	SS	0
SS	147	W	N 5TH ST / PAWNEE ST	0	0	SS	SS
SS	147	E	N 5TH ST / PAWNEE ST	0	0	SS	SS
SS	148	E	N 5TH ST / CHEYENNE ST	0	0	SS	SS
SS	149	W	N 6TH ST / CHEYENNE ST	0	0	SS	SS
SS	149	E	N 6TH ST / CHEYENNE ST	0	0	SS	SS
SS	150	W	N 6TH ST / PAWNEE ST	0	0	SS	SS
SS	150	E	N 6TH ST / PAWNEE ST	0	0	SS	SS
SS	151	W	N 6TH ST / DAKOTA ST	0	0	SS	SS
SS	151	E	N 6TH ST / DAKOTA ST	0	0	SS	SS
SS	152	W	N 7TH ST / DAKOTA ST	0	0	SS	SS
SS	152	E	N 7TH ST / DAKOTA ST	0	0	SS	SS
SS	153	W	N 7TH ST / PAWNEE ST	0	0	SS	SS
SS	153	E	N 7TH ST / PAWNEE ST	0	0	SS	SS
SS	154	W	N 7TH ST / CHEYENNE ST	0	0	SS	SS
SS	154	E	N 7TH ST / CHEYENNE ST	0	0	SS	SS
SS	155	W	N BROADWAY ST / CHEYENNE ST	0	0	SS	SS
SS	155	E	N BROADWAY ST / CHEYENNE ST	0	0	SS	SS
SS	156	W	N BROADWAY ST / PAWNEE ST	0	0	SS	SS
SS	156	E	N BROADWAY ST / PAWNEE ST	0	0	SS	SS
SS	157	W	N BROADWAY ST / DAKOTA ST	0	0	SS	SS
SS	157	E	N BROADWAY ST / DAKOTA ST	0	0	SS	SS
SS	158	S	N 8TH ST / DAKOTA ST	SS	SS	0	0
SS	158	N	N 8TH ST / DAKOTA ST	SS	SS	0	0
SS	159	W	N 8TH ST / PAWNEE ST	0	0	SS	SS
SS	159	E	N 8TH ST / PAWNEE ST	0	0	SS	SS
SS	160	W	N 8TH ST / CHEYENNE ST	0	0	SS	SS
SS	160	E	N 8TH ST / CHEYENNE ST	0	0	SS	SS
SS	161	W	N 9TH ST / CHEYENNE ST	0	0	SS	SS
SS	161	E	N 9TH ST / CHEYENNE ST	0	0	SS	SS
SS	162	W	N 9TH ST / PAWNEE ST	0	0	SS	SS
SS	162	E	N 9TH ST / PAWNEE ST	0	0	SS	SS
SS	163	W	N 9TH ST / DAKOTA ST	0	0	SS	SS
SS	163	E	N 9TH ST / DAKOTA ST	0	0	SS	SS
SS	164	W	N 9TH ST / KIOWA ST	0	0	SS	SS
SS	164	E	N 9TH ST / KIOWA ST	0	0	SS	SS
SS	165	S	N 9TH ST / KICKAPOO ST	0	SS	0	0
SS	166	N	N 8TH ST / KICKAPOO ST	SS	SS	0	0
SS	166	S	N 8TH ST / KICKAPOO ST	SS	SS	0	0
SS	167	W	N 8TH ST / KIOWA ST	0	0	SS	SS

2019 Intersection Traffic Control Device Master Index
Adopted by Ordinance No. 8110

Traffic Control Device	Intersection No.	Direction of Traffic Controlled	Intersection Name	NB	SB	EB	WB
SS	167	E	N 8TH ST / KIOWA ST	0	0	SS	SS
SS	168	W	N BROADWAY ST / KIOWA ST	0	0	SS	SS
SS	168	E	N BROADWAY ST / KIOWA ST	0	0	SS	SS
SS	169	W	N BROADWAY ST / KICKAPOO ST	0	0	SS	SS
SS	169	E	N BROADWAY ST / KICKAPOO ST	0	0	SS	SS
SS	170	W	N 7TH ST / KICKAPOO ST	0	0	SS	SS
SS	170	E	N 7TH ST / KICKAPOO ST	0	0	SS	SS
SS	171	W	N 7TH ST / KIOWA ST	0	0	SS	SS
SS	171	E	N 7TH ST / KIOWA ST	0	0	SS	SS
SS	172	W	N 6TH ST / KIOWA ST	0	0	SS	SS
SS	172	E	N 6TH ST / KIOWA ST	0	0	SS	SS
SS	173	W	N 6TH ST / KICKAPOO ST	0	0	SS	SS
SS	173	E	N 6TH ST / KICKAPOO ST	0	0	SS	SS
SS	174	W	N 5TH ST / KICKAPOO ST	0	0	SS	SS
SS	174	E	N 5TH ST / KICKAPOO ST	0	0	SS	SS
SS	175	W	N 5TH ST / KIOWA ST	0	0	SS	SS
SS	175	E	N 5TH ST / KIOWA ST	0	0	SS	SS
SS	176	W	N 4TH ST / KIOWA ST	0	0	SS	SS
SS	176	E	N 4TH ST / KIOWA ST	0	0	SS	SS
SS	177	W	N 4TH ST / KICKAPOO ST	0	0	SS	SS
SS	177	E	N 4TH ST / KICKAPOO ST	0	0	SS	SS
SS	178	W	N 3RD ST / KICKAPOO ST	0	0	SS	SS
SS	178	E	N 3RD ST / KICKAPOO ST	0	0	SS	SS
SS	179	W	N 3RD ST / KIOWA ST	0	0	SS	SS
SS	179	E	N 3RD ST / KIOWA ST	0	0	SS	SS
SS	180	E	N 2ND ST / KIOWA ST	0	0	SS	0
SS	181	W	N 2ND ST / KICKAPOO ST	0	0	SS	SS
SS	181	E	N 2ND ST / KICKAPOO ST	0	0	SS	SS
SS	183	W	N 3RD ST / MIAMI ST	0	0	SS	SS
SS	183	E	N 3RD ST / MIAMI ST	0	0	SS	SS
SS	185	E	N ESPLANDE ST / OTTAWA ST	0	0	SS	0
SS	189	E	N ESPLANDE ST / SENECA ST	0	0	SS	0
SS	190	W	N 2ND ST / SENECA ST	0	0	SS	SS
SS	190	E	N 2ND ST / SENECA ST	0	0	SS	SS
SS	191	W	N 2ND ST / MIAMI ST	0	0	SS	SS
SS	191	E	N 2ND ST / MIAMI ST	0	0	SS	SS
SS	192	W	N 2ND ST / OSAGE ST	0	0	SS	SS
SS	192	E	N 2ND ST / OSAGE ST	0	0	SS	SS
SS	193	W	N 2ND ST / POTTAWATOMIE ST	0	0	SS	SS
SS	193	E	N 2ND ST / POTTAWATOMIE ST	0	0	SS	SS
SS	194	W	N 2ND ST / OTTAWA ST	0	0	SS	SS
SS	194	E	N 2ND ST / OTTAWA ST	0	0	SS	SS
SS	195	E	N 3RD ST / OTTAWA ST	0	0	SS	SS
SS	195	W	N 3RD ST / OTTAWA ST	0	0	SS	SS
SS	196	W	N 3RD ST / POTTAWATOMIE ST	0	0	SS	SS

2019 Intersection Traffic Control Device Master Index
Adopted by Ordinance No. 8110

Traffic Control Device	Intersection No.	Direction of Traffic Controlled	Intersection Name	NB	SB	EB	WB
SS	196	E	N 3RD ST / POTTAWATOMIE ST	0	0	SS	SS
SS	197	W	N 3RD ST / OSAGE ST	0	0	SS	SS
SS	197	E	N 3RD ST / OSAGE ST	0	0	SS	SS
SS	198	W	N 3RD ST / MIAMI ST	0	0	SS	SS
SS	198	E	N 3RD ST / MIAMI ST	0	0	SS	SS
SS	200	W	N 4TH ST / SENECA ST	0	0	SS	SS
SS	200	E	N 4TH ST / SENECA ST	0	0	SS	SS
SS	202	W	N 4TH ST / OSAGE ST	0	0	SS	SS
SS	202	E	N 4TH ST / OSAGE ST	0	0	SS	SS
SS	203	W	N 4TH ST / POTTAWATOMIE ST	0	0	SS	SS
SS	203	E	N 4TH ST / POTTAWATOMIE ST	0	0	SS	SS
SS	204	W	N 4TH ST / OTTAWA ST	0	0	SS	SS
SS	204	E	N 4TH ST / OTTAWA ST	0	0	SS	SS
SS	205	W	N 5TH ST / OTTAWA ST	0	0	SS	SS
SS	205	E	N 5TH ST / OTTAWA ST	0	0	SS	SS
SS	206	W	N 5TH ST / POTTAWATOMIE ST	0	0	SS	SS
SS	206	E	N 5TH ST / POTTAWATOMIE ST	0	0	SS	SS
SS	207	W	N 5TH ST / OSAGE ST	0	0	SS	SS
SS	207	E	N 5TH ST / OSAGE ST	0	0	SS	SS
SS	208	W	N 5TH ST / MIAMI ST	0	0	0	SS
SS	209	W	N 5TH ST / SENECA ST	0	0	SS	SS
SS	209	E	N 5TH ST / SENECA ST	0	0	SS	SS
SS	210	S	N 6TH ST / SENECA ST	SS	SS	0	0
SS	210	N	N 6TH ST / SENECA ST	SS	SS	0	0
SS	211	W	N 6TH ST / MIAMI ST	0	0	0	SS
SS	212	E	N 6TH ST / OSAGE ST	0	0	SS	0
SS	213	W	N 6TH ST / POTTAWATOMIE ST	0	0	SS	SS
SS	213	E	N 6TH ST / POTTAWATOMIE ST	0	0	SS	SS
SS	214	S	N 6TH ST / OTTAWA ST	SS	SS	0	0
SS	214	W	N 6TH ST / OTTAWA ST	SS	SS	0	0
TL	215	1W	N 7TH ST / OTTAWA ST	TL	TL	TL	TL
TL	215	2N 1E	N 7TH ST / OTTAWA ST	TL	TL	TL	TL
TL	215	1E	N 7TH ST / OTTAWA ST	TL	TL	TL	TL
TL	215	1W 1S	N 7TH ST / OTTAWA ST	TL	TL	TL	TL
SS	216	W	N 7TH ST / POTTAWATOMIE ST	0	0	SS	SS
SS	216	E	N 7TH ST / POTTAWATOMIE ST	0	0	SS	SS
SS	217	E	N 7TH ST / OSAGE ST	0	0	SS	0
SS	218	W	N 7TH ST / MIAMI ST	0	0	0	SS
SS	219	W	N 7TH ST / SENECA ST	0	0	SS	SS
SS	219	E	N 7TH ST / SENECA ST	0	0	SS	SS
TL	220	1N 1W	S 7TH ST / SHAWNEE ST	TL	TL	TL	TL
TL	220	1N 1E	S 7TH ST / SHAWNEE ST	TL	TL	TL	TL
TL	220	1S 1E	S 7TH ST / SHAWNEE ST	TL	TL	TL	TL
TL	220	1S 1W	S 7TH ST / SHAWNEE ST	TL	TL	TL	TL
TL	221	1W	S BROADWAY ST / SHAWNEE ST	TL	TL	TL	TL

2019 Intersection Traffic Control Device Master Index
Adopted by Ordinance No. 8110

Traffic Control Device	Intersection No.	Direction of Traffic Controlled	Intersection Name	NB	SB	EB	WB
TL	221	1N	S BROADWAY ST / SHAWNEE ST	TL	TL	TL	TL
TL	221	1E	S BROADWAY ST / SHAWNEE ST	TL	TL	TL	TL
TL	221	1S	S BROADWAY ST / SHAWNEE ST	TL	TL	TL	TL
SS	222	W	N BROADWAY ST / SENECA ST	0	0	SS	SS
SS	222	E	N BROADWAY ST / SENECA ST	0	0	SS	SS
SS	223	W	N BROADWAY ST / MIAMI ST	0	0	SS	SS
SS	223	E	N BROADWAY ST / MIAMI ST	0	0	SS	SS
SS	224	W	N BROADWAY ST / OSAGE ST	0	0	SS	SS
SS	224	E	N BROADWAY ST / OSAGE ST	0	0	SS	SS
SS	225	W	N BRDWAY / POTTAWATOMIE ST	0	0	SS	SS
SS	225	E	N BROADWAY / POTTAWATOMIE ST	0	0	SS	SS
SS	226	W	N BROADWAY ST / OTTAWA ST	0	0	SS	SS
SS	226	W	N BROADWAY ST / OTTAWA ST	0	0	SS	SS
SS	227	S	N 8TH ST / OTTAWA ST	SS	SS	0	0
SS	227	W	N 8TH ST / OTTAWA ST	SS	SS	0	0
SS	228	S	N 8TH ST / POTTAWATOMIE ST	SS	SS	0	0
SS	228	W	N 8TH ST / POTTAWATOMIE ST	SS	SS	0	0
SS	229	S	N 8TH ST / OSAGE ST	SS	SS	0	0
SS	229	N	N 8TH ST / OSAGE ST	SS	SS	0	0
SS	230	S	N 8TH ST / MIAMI ST	SS	SS	0	0
SS	230	N	N 8TH ST / MIAMI ST	SS	SS	0	0
TL	232	1N 1W	S 6TH ST / SHAWNEE ST	TL	TL	TL	TL
TL	232	1N 1E	S 6TH ST / SHAWNEE ST	TL	TL	TL	TL
TL	232	1S 1W	S 6TH ST / SHAWNEE ST	TL	TL	TL	TL
TL	232	1S 1E	S 6TH ST / SHAWNEE ST	TL	TL	TL	TL
TL	233	1N 1W	S 5TH ST / SHAWNEE ST	TL	TL	TL	TL
TL	233	1N 1E	S 5TH ST / SHAWNEE ST	TL	TL	TL	TL
TL	233	1S 1W	S 5TH ST / SHAWNEE ST	TL	TL	TL	TL
TL	233	1S 1E	S 5TH ST / SHAWNEE ST	TL	TL	TL	TL
TL	234	1N 1W	S 4TH ST / SHAWNEE ST	TL	TL	TL	TL
TL	234	1N 1E	S 4TH ST / SHAWNEE ST	TL	TL	TL	TL
TL	234	1S 1 E	S 4TH ST / SHAWNEE ST	TL	TL	TL	TL
TL	234	1S 1W	S 4TH ST / SHAWNEE ST	TL	TL	TL	TL
SS	235	W	S 3RD ST / SHAWNEE ST	0	0	SS	SS
SS	235	E	S 3RD ST / SHAWNEE ST	0	0	SS	SS
SS	236	W	S 2ND ST / SHAWNEE ST	0	0	SS	SS
SS	236	E	S 2ND ST / SHAWNEE ST	0	0	SS	SS
SS	237	E	S ESPLANDE ST / SHAWNEE ST	0	0	SS	0
SS	238	E	S ESPLANDE ST / DELAWARE ST	0	0	SS	0
SS	239	S	S 2ND ST / DELAWARE ST	SS	SS	SS	0
SS	239	N	S 2ND ST / DELAWARE ST	SS	SS	SS	0
SS	239	E	S 2ND ST / DELAWARE ST	SS	SS	SS	0
SS	240	S	S 3RD ST / DELAWARE ST	SS	SS	0	0
SS	240	N	S 3RD ST / DELAWARE ST	SS	SS	0	0
TL	241	1N 1W	S 4TH ST / DELAWARE ST	TL	TL	TL	TL

2019 Intersection Traffic Control Device Master Index
Adopted by Ordinance No. 8110

Traffic Control Device	Intersection No.	Direction of Traffic Controlled	Intersection Name	NB	SB	EB	WB
TL	241	1N 1E	S 4TH ST / DELAWARE ST	TL	TL	TL	TL
TL	241	1S 1E	S 4TH ST / DELAWARE ST	TL	TL	TL	TL
TL	241	1S 1W	S 4TH ST / DELAWARE ST	TL	TL	TL	TL
TL	242	1N 1W	S 5TH ST / DELAWARE ST	TL	TL	TL	TL
TL	242	1N 1E	S 5TH ST / DELAWARE ST	TL	TL	TL	TL
TL	242	1S 1E	S 5TH ST / DELAWARE ST	TL	TL	TL	TL
TL	242	1S 1W	S 5TH ST / DELAWARE ST	TL	TL	TL	TL
SS	243	S	N 6TH ST / DELAWARE ST	SS	SS	SS	0
SS	243	N	N 6TH ST / DELAWARE ST	SS	SS	SS	0
SS	243	E	N 6TH ST / DELAWARE ST	SS	SS	SS	0
TL	244	1N 1W	S 7TH ST / DELAWARE ST	TL	TL	TL	TL
TL	244	1N 1E	S 7TH ST / DELAWARE ST	TL	TL	TL	TL
TL	244	1S 1E	S 7TH ST / DELAWARE ST	TL	TL	TL	TL
TL	244	1S 1W	S 7TH ST / DELAWARE ST	TL	TL	TL	TL
SS	245	W	S BROADWAY ST / DELAWARE ST	0	0	SS	SS
SS	245	E	S BROADWAY ST / DELAWARE ST	0	0	SS	SS
TL	246	W	S BROADWAY ST / CHEROKEE ST	TL	TL	TL	TL
TL	246	N	S BROADWAY ST / CHEROKEE ST	TL	TL	TL	TL
TL	246	E	S BROADWAY ST / CHEROKEE ST	TL	TL	TL	TL
TL	246	S	S BROADWAY ST / CHEROKEE ST	TL	TL	TL	TL
TL	247	1N 1W	S 7TH ST / CHEROKEE ST	TL	TL	TL	TL
TL	247	1N 1E	S 7TH ST / CHEROKEE ST	TL	TL	TL	TL
TL	247	1S 1E	S 7TH ST / CHEROKEE ST	TL	TL	TL	TL
TL	247	1S 1W	S 7TH ST / CHEROKEE ST	TL	TL	TL	TL
TL	248	W	S 6TH ST / CHEROKEE ST	TL	TL	TL	TL
TL	248	N	S 6TH ST / CHEROKEE ST	TL	TL	TL	TL
TL	248	E	S 6TH ST / CHEROKEE ST	TL	TL	TL	TL
TL	248	S	S 6TH ST / CHEROKEE ST	TL	TL	TL	TL
TL	249	1N 1W	S 5TH ST / CHEROKEE ST	TL	TL	TL	TL
TL	249	1N 1E	S 5TH ST / CHEROKEE ST	TL	TL	TL	TL
TL	249	1S 1E	S 5TH ST / CHEROKEE ST	TL	TL	TL	TL
TL	249	1S 1W	S 5TH ST / CHEROKEE ST	TL	TL	TL	TL
TL	250	1N 1W	S 4TH ST / CHEROKEE ST	TL	TL	TL	TL
TL	250	1N 1E	S 4TH ST / CHEROKEE ST	TL	TL	TL	TL
TL	250	1S 1E	S 4TH ST / CHEROKEE ST	TL	TL	TL	TL
TL	250	1S 1W	S 4TH ST / CHEROKEE ST	TL	TL	TL	TL
SS	251	S	S 3RD ST / CHEROKEE ST	SS	SS	SS	SS
SS	251	W	S 3RD ST / CHEROKEE ST	SS	SS	SS	SS
SS	251	N	S 3RD ST / CHEROKEE ST	SS	SS	SS	SS
SS	251	E	S 3RD ST / CHEROKEE ST	SS	SS	SS	SS
SS	252	S	S 2ND ST / CHEROKEE ST	SS	SS	SS	SS
SS	252	W	S 2ND ST / CHEROKEE ST	SS	SS	SS	SS
SS	252	N	S 2ND ST / CHEROKEE ST	SS	SS	SS	SS
SS	252	E	S 2ND ST / CHEROKEE ST	SS	SS	SS	SS
SS	253	W	S ESPLANDE ST / CHEROKEE ST	0	0	SS	SS

2019 Intersection Traffic Control Device Master Index
Adopted by Ordinance No. 8110

Traffic Control Device	Intersection No.	Direction of Traffic Controlled	Intersection Name	NB	SB	EB	WB
SS	253	E	S ESPLANDE ST / CHEROKEE ST	0	0	SS	SS
SS	254	E	S ESPLANDE ST / CHOCTAW ST	0	0	SS	0
SS	255	S	S 2ND ST / CHOCTAW ST	SS	SS	SS	SS
SS	255	W	S 2ND ST / CHOCTAW ST	SS	SS	SS	SS
SS	255	N	S 2ND ST / CHOCTAW ST	SS	SS	SS	SS
SS	255	E	S 2ND ST / CHOCTAW ST	SS	SS	SS	SS
SS	256	W	S 3RD ST / CHOCTAW ST	0	0	SS	SS
SS	256	E	S 3RD ST / CHOCTAW ST	0	0	SS	SS
SS	257	W	S 4TH ST / CHOCTAW ST	0	0	SS	SS
SS	257	E	S 4TH ST / CHOCTAW ST	0	0	SS	SS
SS	258	W	S 5TH ST / CHOCTAW ST	0	0	0	SS
SS	260	S	S 21ST ST / HIGH ST	SS	SS	0	0
SS	260	N	S 21ST ST / HIGH ST	SS	SS	0	0
SS	261	W	S 21ST ST / CHOCTAW ST	0	0	0	SS
SS	262	W	S 20TH ST / CHEROKEE ST	0	0	0	SS
SS	263	E	S 20TH ST / CHOCTAW ST	0	0	SS	0
SS	264	E	S 20TH ST / HIGH ST	0	0	SS	0
SS	265	W	S 20TH ST / HIGH DR	0	0	0	SS
SS	266	E	S 20TH ST / MARJORIE CIR (N)	0	0	SS	0
SS	267	EB	S 20TH ST	0	0	SS	0
SS	268	S	HIGH DR / HIGH CT	0	SS	0	0
SS	269	W	S 19TH ST / HIGH ST	0	0	SS	SS
SS	269	E	S 19TH ST / HIGH ST	0	0	SS	SS
TL	271	2W	S 20TH ST / SPRUCE ST	TL	TL	TL	TL
TL	271	3N	S 20TH ST / SPRUCE ST	TL	TL	TL	TL
TL	271	2E	S 20TH ST / SPRUCE ST	TL	TL	TL	TL
TL	271	3S	S 20TH ST / SPRUCE ST	TL	TL	TL	TL
SS	272	S	S 19TH ST / SPRUCE ST	0	SS	0	0
SS	273	W	S 19TH ST / OLIVE ST	0	0	0	SS
SS	274	S	S 18TH ST / SPRUCE ST	0	SS	0	0
SS	275	E	S 18TH ST / OLIVE ST	0	0	SS	0
SS	276	W	S 18TH ST / HIGH ST	0	0	SS	SS
SS	276	E	S 18TH ST / HIGH ST	0	0	SS	SS
SS	280	W	S. 18TH ST / SHERMAN AVE	0	0	0	SS
SS	281	S	S 18TH ST CHEROKEE ST	SS	SS	0	0
SS	281	N	S 18TH ST CHEROKEE ST	SS	SS	0	0
SS	282	S	TOPEKA AVE / CHEROKEE ST	0	SS	0	0
SS	283	S	S 17TH ST / CHEROKEE ST	0	SS	0	0
SS	284	S	LEAVENWORTH ST / CHEROKEE ST	0	SS	0	0
SS	285	W	S 16TH ST / DELAWARE ST	0	0	0	SS
SS	286	S	S 16TH ST / CHEROKEE ST	SS	SS	0	0
SS	286	N	S 16TH ST / CHEROKEE ST	SS	SS	0	0
SS	289	S	S 15TH ST / CHEROKEE ST	SS	SS	0	0
SS	289	N	S 15TH ST / CHEROKEE ST	SS	SS	0	0
SS	290	S	S 15TH ST / DELAWARE ST	SS	SS	0	0

2019 Intersection Traffic Control Device Master Index
Adopted by Ordinance No. 8110

Traffic Control Device	Intersection No.	Direction of Traffic Controlled	Intersection Name	NB	SB	EB	WB
SS	290	N	S 15TH ST / DELAWARE ST	SS	SS	0	0
SS	291	W	S 14TH ST / DELAWARE ST	0	0	SS	SS
SS	291	E	S 14TH ST / DELAWARE ST	0	0	SS	SS
SS	292	S	S 14TH ST / CHEROKEE ST	SS	SS	0	0
SS	292	N	S 14TH ST / CHEROKEE ST	SS	SS	0	0
SS	293	S	S 13TH ST / CHEROKEE ST	0	SS	0	0
SS	294	W	S 12TH ST / DELAWARE ST	0	0	SS	SS
SS	294	E	S 13TH ST / DELAWARE ST	0	0	SS	SS
SS	295	W	S 12TH ST / DELAWARE ST	0	0	SS	SS
SS	295	E	S 12TH ST / DELAWARE ST	0	0	SS	SS
SS	296	S	S 12TH ST / CHEROKEE ST	0	SS	0	0
SS	297	E	S 11TH ST / DELAWARE ST	0	0	SS	0
SS	298	S	S 11TH ST / CHEROKEE ST	SS	SS	0	0
SS	298	N	S 11TH ST / CHEROKEE ST	SS	SS	0	0
SS	301	EB	TERRACE RD / SHERMAN AVE	0	0	SS	0
SS	303	N	S 15TH ST / SANDERS ST	SS	0	0	0
SS	304	S	S 15TH ST / HIGH ST	0	SS	0	0
Y	305	S	S 13TH ST / HIGH ST	0	Y	0	0
SS	307	S	TERRACE RD / HIGH ST	SS	SS	0	0
SS	307	N	TERRACE RD / HIGH ST	SS	SS	0	0
SS	308	N	S 17TH TERR / SPRUCE ST	SS	0	0	0
SS	309	N	S 17TH ST / SPRUCE ST	SS	0	0	0
SS	310	S	S 16TH ST / SPRUCE ST	0	SS	0	0
SS	311	N	SPRUCE ST / S 15TH ST (W)	SS	0	0	0
SS	313	S	S 14TH ST / SPRUCE ST	SS	SS	0	0
SS	313	N	S 14TH ST / SPRUCE ST	SS	SS	0	0
SS	314	N	S 14TH ST / OLIVE ST	SS	0	0	0
SS	315	S	TERRACE RD / SPRUCE ST	0	SS	0	0
SS	316	W	TERRACE RD / OLIVE ST	0	0	SS	SS
SS	316	E	TERRACE RD / OLIVE ST	0	0	SS	SS
SS	317	S	NEWMAN ST / SPRUCE ST	0	SS	0	0
SS	318	S	NEWMAN ST / OLIVE ST	SS	SS	0	0
SS	318	N	NEWMAN ST / OLIVE ST	SS	SS	0	0
SS	319	N	NEWMAN ST / HIGH ST	SS	0	0	0
SS	320	2W	SPRUCE ST / GRAND AVE	TL	TL	TL	TL
SS	320	2E	SPRUCE ST / GRAND AVE	TL	TL	TL	TL
Y	321	W	S 10TH ST ON RAMP / SPRUCE ST	0	0	0	Y
SS	323	W	S 10TH ST / OLIVE ST	0	0	SS	SS
SS	323	E	S 10TH ST / OLIVE ST	0	0	SS	SS
SS	325	W	GRAND AVE / OLIVE ST	0	0	SS	SS
SS	325	E	GRAND AVE / OLIVE ST	0	0	SS	SS
SS	327	E	GRAND AVE / HIGH ST	0	0	SS	0
SS	328	W	GRAND AVE / CHESTNUT ST	0	0	0	SS
SS	329	EB	S 10TH ST / CHESTNUT	0	0	SS	0
TL	330	2W 1N	SPRUCE ST / 10TH AVE	TL	TL	TL	TL

2019 Intersection Traffic Control Device Master Index
Adopted by Ordinance No. 8110

Traffic Control Device	Intersection No.	Direction of Traffic Controlled	Intersection Name	NB	SB	EB	WB
TL	330	2N	SPRUCE ST / 10TH AVE	TL	TL	TL	TL
TL	330	2E	SPRUCE ST / 10TH AVE	TL	TL	TL	TL
TL	330	2S	SPRUCE ST / 10TH AVE	TL	TL	TL	TL
SS	331	E	GRAND AVE / SANDERS ST	0	0	SS	0
SS	332	W	GRAND ST / WALNUT ST	0	0	0	SS
SS	333	W	S 10TH ST / WALNUT ST	0	0	SS	SS
SS	333	E	S 10TH ST / WALNUT ST	0	0	SS	SS
SS	334	SW	S 10TH ST / SHERMAN AVE	0	0	SS	SS
SS	334	NE	S 10TH ST / SHERMAN AVE	0	0	SS	SS
SS	335	W	GRAND AV / SHERMAN AV (S)	0	0	0	SS
SS	336	E	GRAND AV / SHERMAN AV (N)	0	0	SS	0
SS	338	N	GRAND ST / CHEROKEE ST	SS	0	0	0
SS	339	W	S 10TH ST / CHEROKEE ST	0	0	SS	SS
SS	339	E	S 10TH ST / CHEROKEE ST	0	0	SS	SS
SS	340	W	S 10TH ST / DELAWARE ST	0	0	0	SS
SS	342	S	S 9TH ST / CHEROKEE ST	SS	SS	0	0
SS	342	N	S 9TH ST / CHEROKEE ST	SS	SS	0	0
SS	343	S	RYAN ST / CHEROKEE ST	0	SS	0	0
SS	345	S	CHEROKEE ST / CHEROKEE ST	0	SS	0	0
SS	346	N	LAWRENCE AVE / CHEROKEE ST	SS	0	0	0
SS	347	S	CHEROKEE ST / SHERMAN AV	0	SS	0	0
SS	348	S	S 9TH ST / SHERMAN AV (E)	0	SS	0	0
SS	349	N	S 9TH ST / SHERMAN AV (W)	SS	0	0	0
SS	350	W	LAWRENCE AV / CHOCTAW ST	0	0	0	SS
SS	351	E	LAWRENCE AVE / CHOCTAW ST	0	0	SS	0
SS	352	W	S 9TH ST / WALNUT ST	0	0	SS	SS
SS	352	E	S 9TH ST / WALNUT ST	0	0	SS	SS
SS	353	W	S 9TH ST / CHESTNUT ST	0	0	SS	SS
SS	353	E	S 9TH ST / CHESTNUT ST	0	0	SS	SS
SS	354	E	LAWRENCE AVE / CHESTNUT ST	0	0	SS	0
SS	356	S	S 9TH ST / OLIVE ST	SS	SS	0	0
SS	356	N	S 9TH ST / OLIVE ST	SS	SS	0	0
SS	356	E	S 9TH ST / OLIVE ST	SS	SS	0	0
Y	357	E	10TH AVE ON RAMP / SPRUCE ST	0	0	Y	0
SS	358	S	SPRUCE ST / S 9TH ST	0	SS	0	0
SS	359	S	SPRUCE ST / LAWRENCE AVE	0	SS	0	0
SS	360	N	SPRUCE ST / CENTRAL AVE	SS	0	0	0
SS	361	S	RAILROAD AV / SPRUCE ST	0	SS	0	0
SS	362	N	SPRUCE ST / 9TH AVE	SS	0	0	0
SS	363	S	SPRUCE ST / COLUMBIA AVE	SS	SS	0	0
SS	363	N	SPRUCE ST / COLUMBIA AVE	SS	SS	0	0
TL	364	1N 1W	SPRUCE ST / S BROADWAY ST	TL	TL	TL	TL
TL	364	1N 1E	SPRUCE ST / S BROADWAY ST	TL	TL	TL	TL
TL	364	1S 1E	SPRUCE ST / S BROADWAY ST	TL	TL	TL	TL
TL	364	1S 1W	SPRUCE ST / S BROADWAY ST	TL	TL	TL	TL

2019 Intersection Traffic Control Device Master Index
Adopted by Ordinance No. 8110

Traffic Control Device	Intersection No.	Direction of Traffic Controlled	Intersection Name	NB	SB	EB	WB
SS	365	N	6TH AVE / SPRUCE ST (E)	SS	0	0	0
SS	366	S	6TH AVE / SPRUCE ST (W)	0	SS	0	0
SS	367	N	W 7TH ST / SPRUCE (E)	SS	0	0	0
SS	368	S	W 7TH ST / SPRUCE (W)	0	SS	0	0
TL	369	1N	SPRUCE ST / S 7TH ST (W)	TL	TL	TL	TL
TL	369	1N	SPRUCE ST / S 7TH ST (W)	TL	TL	TL	TL
TL	369	1N	SPRUCE ST / S 7TH ST (W)	TL	TL	TL	TL
TL	369	2W	SPRUCE ST / S 7TH ST (W)	TL	TL	TL	TL
TL	369	1W	SPRUCE ST / S 7TH ST (W)	TL	TL	TL	TL
TL	369	1S	SPRUCE ST / S 7TH ST (W)	TL	TL	TL	TL
SS	371	W	S BROADWAY ST / OLIVE ST	0	0	0	SS
SS	372	S	6TH AVE / OLIVE ST	SS	SS	0	0
SS	372	N	6TH AVE / OLIVE ST	SS	SS	0	0
SS	373	E	W 7TH ST / OLIVE ST (N)	0	0	SS	0
SS	374	W	W 7TH ST / OLIVE ST (S)	0	0	0	SS
SS	376	N	S 7TH ST / OLIVE ST	SS	0	0	0
SS	376	N	S 7TH ST / OLIVE ST	SS	0	0	0
SS	376	N	S 7TH ST / OLIVE ST	SS	0	0	0
SS	377	W	S BROADWAY ST / CHESTNUT ST	0	0	0	SS
SS	378	S	6TH AVE / CHEST NUT ST	SS	SS	0	0
SS	378	N	6TH AVE / CHEST NUT ST	SS	SS	0	0
SS	379	E	W 7TH ST / CHESTNUT ST (N)	0	0	SS	0
SS	380	W	W 7TH ST / CHESTNUT ST (S)	0	0	0	SS
SS	381	W	S 7TH ST CHESTNUT ST	0	0	SS	SS
SS	381	E	S 7TH ST CHESTNUT ST	0	0	SS	SS
SS	382	W	S 7TH ST / WALNUT ST	0	0	SS	SS
SS	382	E	S 7TH ST / WALNUT ST	0	0	SS	SS
SS	383	W	W 7TH ST / WALNUT ST (S)	0	0	0	SS
SS	384	E	W 7TH ST / WALNUT ST (N)	0	0	SS	0
SS	385	S	6TH AVE / WALNUT ST	SS	SS	0	0
SS	385	N	6TH AVE / WALNUT ST	SS	SS	0	0
SS	386	W	S BROAD WAY ST / WALNUT ST	0	0	0	SS
SS	387	W	S BROADWAY ST / OAK ST	0	0	0	SS
SS	388	N	6TH AVE / OAK ST	SS	0	0	0
SS	389	E	W 7TH ST / OAK ST (N)	0	0	SS	0
SS	390	W	W 7TH ST / OAK ST (S)	0	0	0	SS
SS	391	W	S 7TH ST OAK ST	0	0	SS	SS
SS	391	E	S 7TH ST OAK ST	0	0	SS	SS
SS	393	EB	S 7TH ST / SHORT ST	0	0	SS	0
SS	395	EB	S 6TH ST / SHORT ST	0	0	SS	0
SS	396	W	S 6TH ST / OAK ST	0	0	SS	SS
SS	396	E	S 6TH ST / OAK ST	0	0	SS	SS
SS	397	E	S 5TH ST / OAK ST	0	0	SS	0
SS	398	W	S 6TH ST / WALNUT ST	0	0	SS	SS
SS	398	E	S 6TH ST / WALNUT ST	0	0	SS	SS

2019 Intersection Traffic Control Device Master Index
Adopted by Ordinance No. 8110

Traffic Control Device	Intersection No.	Direction of Traffic Controlled	Intersection Name	NB	SB	EB	WB
SS	399	W	S 5TH ST / WALNUT ST	0	0	SS	SS
SS	399	E	S 5TH ST / WALNUT ST	0	0	SS	SS
SS	400	W	S 4TH ST / WALNUT ST	0	0	SS	SS
SS	400	E	S 4TH ST / WALNUT ST	0	0	SS	SS
SS	401	E	S 2ND ST / CHESTNUT ST	0	0	SS	0
SS	402	W	S 3RD ST / CHEST NUT ST	0	0	SS	SS
SS	402	E	S 3RD ST / CHEST NUT ST	0	0	SS	SS
SS	403	E	S 3RD ST / MARKET ST	0	0	SS	0
SS	404	E	S 3RD ST / WALNUT ST	0	0	SS	0
SS	405	W	S 4TH ST / MARKET ST	0	0	0	SS
SS	406	W	S 4TH ST / CHESTNUT ST	0	0	0	SS
SS	407	W	S 5TH ST / CHESTNUT ST	0	0	SS	SS
SS	407	E	S 5TH ST / CHESTNUT ST	0	0	SS	SS
SS	408	W	S 6TH ST / CHESTNUT ST	0	0	SS	SS
SS	408	E	S 6TH ST / CHESTNUT ST	0	0	SS	SS
SS	409	W	S 6TH ST / OLIVE ST	0	0	SS	SS
SS	409	E	S 6TH ST / OLIVE ST	0	0	SS	SS
SS	410	W	S 5TH ST / OLIVE ST	0	0	SS	SS
SS	410	E	S 5TH ST / OLIVE ST	0	0	SS	SS
SS	411	W	S 4TH ST / OLIVE ST	0	0	SS	SS
SS	411	E	S 4TH ST / OLIVE ST	0	0	SS	SS
SS	412	W	S 3RD ST / OLIVE ST	0	0	SS	SS
SS	412	E	S 3RD ST / OLIVE ST	0	0	SS	SS
SS	413	W	S 2ND ST / OLIVE ST	0	0	SS	SS
SS	413	E	S 2ND ST / OLIVE ST	0	0	SS	SS
SS	416	S	SPRUCE ST / S 2ND ST	SS	SS	SS	SS
SS	416	W	SPRUCE ST / S 2ND ST	SS	SS	SS	SS
SS	416	N	SPRUCE ST / S 2ND ST	SS	SS	SS	SS
SS	416	E	SPRUCE ST / S 2ND ST	SS	SS	SS	SS
SS	417	S	SPRUCE ST / S 3RD ST	SS	SS	SS	SS
SS	417	W	SPRUCE ST / S 3RD ST	SS	SS	SS	SS
SS	417	N	SPRUCE ST / S 3RD ST	SS	SS	SS	SS
SS	417	E	SPRUCE ST / S 3RD ST	SS	SS	SS	SS
TL	418	2W	SPRUCE ST / S 4TH ST	TL	TL	TL	TL
TL	418	3N	SPRUCE ST / S 4TH ST	TL	TL	TL	TL
TL	418	2E	SPRUCE ST / S 4TH ST	TL	TL	TL	TL
TL	418	3S	SPRUCE ST / S 4TH ST	TL	TL	TL	TL
TL	419	2W	SPRUCE ST / S 5TH ST	TL	TL	TL	TL
TL	419	2N	SPRUCE ST / S 5TH ST	TL	TL	TL	TL
TL	419	2E	SPRUCE ST / S 5TH ST	TL	TL	TL	TL
TL	419	2S	SPRUCE ST / S 5TH ST	TL	TL	TL	TL
SS	420	2E	SPRUCE ST / 3RD AVE	TL	0	TL	TL
SS	421	S	SPRUCE ST / S 6TH ST	0	SS	0	0
SS	422	N	SPRUCE ST / 4TH AVE	SS	0	0	0
SS	423	N	S 22ND ST / SPRUCE ST	SS	0	0	0

2019 Intersection Traffic Control Device Master Index
Adopted by Ordinance No. 8110

Traffic Control Device	Intersection No.	Direction of Traffic Controlled	Intersection Name	NB	SB	EB	WB
SS	424	N	S 21ST ST / SPRUCE ST	SS	0	0	0
SS	430	W	S 20TH ST / EDGEWOOD DR	0	0	0	SS
SS	433	W	S 20TH ST / WOODRIDGE DR	0	0	0	SS
SS	436	W	S 20TH ST / LECOMPTON RD	0	0	SS	SS
SS	436	E	S 20TH ST / LECOMPTON RD	0	0	SS	SS
SS	437	N	S 18TH ST / LECOMPTON RD	SS	0	0	0
SS	438	S	WESTERN ST / OHIO ST	0	SS	0	0
SS	439	S	S 15TH ST / OHIO ST	0	SS	0	0
SS	441	W	S 15TH ST / KANSAS ST (N)	0	0	0	SS
SS	442	E	S 15TH ST / KANSAS ST (S)	0	0	SS	0
SS	443	N	WESTERN ST / KANSAS ST	SS	0	0	0
SS	444	N	S 16TH ST / KANSAS ST (E)	SS	0	0	0
SS	445	W	S 16TH ST / KANSAS ST (W)	0	0	0	SS
SS	448	N	S 15TH ST / QUINCY ST	SS	0	0	0
SS	449	N	PATTERSON ST / QUINCY ST	SS	0	0	0
SS	450	S	S 14TH ST / QUINCY ST	0	SS	0	0
SS	451	S	MADISON ST / QUINCY ST	0	SS	0	0
SS	452	S	WASHINGTON ST / QUINCY ST	SS	SS	SS	SS
SS	452	W	WASHINGTON ST / QUINCY ST	SS	SS	SS	SS
SS	452	N	WASHINGTON ST / QUINCY ST	SS	SS	SS	SS
SS	452	E	WASHINGTON ST / QUINCY ST	SS	SS	SS	SS
SS	453	N	WESTWOOD DR / OHIO ST	SS	0	0	0
SS	454	N	STONELEIGH CT / OHIO ST (W)	SS	0	0	0
SS	455	N	STONELEIGH CT / OHIO ST (E)	SS	0	0	0
SS	456	S	WASHINGTON ST / OHIO ST	0	SS	0	0
SS	457	N	JACKSON ST / OHIO ST	SS	0	0	0
SS	458	N	FRANKLIN ST / OHIO ST (W)	SS	0	0	0
SS	459	S	FRANKLIN ST / OHIO ST (E)	0	SS	0	0
SS	460	N	NEWMAN ST OHIO ST	SS	0	0	0
SS	461	N	KLEMP ST / OHIO ST	SS	0	0	0
SS	462	S	GRAND AVE / OHIO ST	SS	SS	0	0
SS	462	N	GRAND AVE / OHIO ST	SS	SS	0	0
SS	463	N	S 11TH ST / OHIO ST	SS	0	0	0
SS	464	S	KINGMAN ST / OHIO ST	0	SS	0	0
SS	465	W	FRANKLIN ST / KANSAS ST	0	0	0	SS
SS	466	S	NEWMAN ST / KANSAS ST	0	SS	0	0
SS	467	S	KLEMP ST / KANSAS ST	SS	SS	0	0
SS	467	N	KLEMP ST / KANSAS ST	SS	SS	0	0
SS	469	W	GRAND AVE / KANSAS ST	0	0	SS	SS
SS	469	E	GRAND AVE / KANSAS ST	0	0	SS	SS
SS	470	S	KINGMAN ST / KANSAS ST	SS	SS	0	0
SS	470	N	KINGMAN ST / KANSAS ST	SS	SS	0	0
SS	471	S	JACKSON ST / QUINCY ST	0	SS	0	0
SS	472	W	FRANKLIN ST / QUINCY ST	0	0	SS	SS
SS	472	E	FRANKLIN ST / QUINCY ST	0	0	SS	SS

2019 Intersection Traffic Control Device Master Index
Adopted by Ordinance No. 8110

Traffic Control Device	Intersection No.	Direction of Traffic Controlled	Intersection Name	NB	SB	EB	WB
SS	473	N	NEWMAN ST / QUINCY ST	SS	0	0	0
SS	474	N	KLEMP ST / QUINCY ST	SS	0	0	0
SS	475	W	GRAND AVE / QUINCY ST	0	0	SS	SS
SS	475	E	GRAND AVE / QUINCY ST	0	0	SS	SS
SS	477	E	10TH AVE / OHIO ST	0	0	SS	0
SS	478	W	10TH AVE / KANSAS ST	0	0	SS	SS
SS	478	E	10TH AVE / KANSAS ST	0	0	SS	SS
SS	479	E	10TH AVE / QUINCY ST	0	0	SS	0
SS	480	E	10TH AVE / IRONMOULDERS ST	0	0	SS	0
SS	481	W	GRAND AVE / IRONMOULDERS ST	0	0	SS	SS
SS	481	E	GRAND AVE / IRONMOULDERS ST	0	0	SS	SS
SS	482	S	KLEMP ST / IRONMOULDERS ST	0	SS	0	0
SS	483	W	FRANKLIN ST / IRONMOULDERS ST	0	0	0	SS
SS	484	W	WASHINGTON ST / RANDOLPH ST	0	0	0	SS
SS	485	S	JACKSON ST / RANDOLPH ST	SS	SS	0	0
SS	485	N	JACKSON ST / RANDOLPH ST	SS	SS	0	0
SS	486	W	FRANKLIN ST / RANDOLPH ST	0	0	SS	SS
SS	486	E	FRANKLIN ST / RANDOLPH ST	0	0	SS	SS
SS	487	S	KLEMP ST / RANDOLPH ST	SS	SS	0	0
SS	487	N	KLEMP ST / RANDOLPH ST	SS	SS	0	0
SS	488	W	GRAND AVE / RANDOLPH ST	0	0	SS	SS
SS	488	E	GRAND AVE / RANDOLPH ST	0	0	SS	SS
SS	489	E	10TH AVE / RANDOLPH ST	0	0	SS	0
SS	490	E	10TH AVE / KENTON ST	0	0	SS	0
SS	492	W	GRAND AVE / KENTON ST	0	0	SS	SS
SS	492	E	GRAND AVE / KENTON ST	0	0	SS	SS
SS	493	W	KLEMP ST / KENTON ST	0	0	SS	SS
SS	493	E	KLEMP ST / KENTON ST	0	0	SS	SS
SS	494	W	FRANKLIN ST / KENTON ST	0	0	0	SS
SS	496	N	SPRUCE ST / KLEMP ST	SS	0	0	0
SS	497	N	FRANKLIN ST / SPRUCE ST	SS	0	0	0
SS	498	N	JACKSON ST / SPRUCE ST	SS	0	0	0
SS	499	N	WASHINGTON ST / SPRUCE ST	SS	0	0	0
SS	500	N	MADISON ST / SPRUCE ST	SS	0	0	0
SS	505	WB	CENTRAL AVE / RANDOLPH ST	0	0	0	SS
SS	506	EB	9TH AVE	0	0	SS	0
SS	507	W	9TH AVE / FRANK ST	0	0	0	SS
SS	508	W	COLUMBIA AVE / FRANK ST	0	0	SS	SS
SS	508	E	COLUMBIA AVE / FRANK ST	0	0	SS	SS
SS	509	W	S BROADWAY ST / FRANK ST	0	0	SS	SS
SS	509	E	S BROADWAY ST / FRANK ST	0	0	SS	SS
SS	510	W	6TH AVE / FRANK ST	0	0	SS	SS
SS	510	E	6TH AVE / FRANK ST	0	0	SS	SS
SS	511	E	W 7TH ST / FRANK ST	0	0	SS	0
SS	512	W	W 7TH ST / CONGRESS ST	0	0	0	SS

2019 Intersection Traffic Control Device Master Index
Adopted by Ordinance No. 8110

Traffic Control Device	Intersection No.	Direction of Traffic Controlled	Intersection Name	NB	SB	EB	WB
SS	513	W	5TH AVE / CONGRESS ST	0	0	SS	SS
SS	513	E	5TH AVE / CONGRESS ST	0	0	SS	SS
SS	514	W	4TH AVE / CONGRESS ST	0	0	SS	SS
SS	514	E	4TH AVE / CONGRESS ST	0	0	SS	SS
SS	516	WB	CENTRAL AVE / CHARLES ST	0	0	SS	SS
SS	516	EB	CENTRAL AVE / CHARLES ST	0	0	SS	SS
SS	517	WB	9TH AVE / CHARLES ST	0	0	SS	SS
SS	517	EB	0517	0	0	SS	SS
SS	518	EB	COLUMBIA AVE / CHARLES ST	0	0	SS	0
SS	519	WB	COLUMBIA AVE / MARSHALL ST	0	0	0	SS
SS	520	WB	S BROADWAY ST / MARSHALL ST	0	0	SS	SS
SS	520	EB	S BROADWAY ST / MARSHALL ST	0	0	SS	SS
SS	521	S	6TH AVE / MARSHALL ST	0	SS	0	0
SS	522	S	W 7TH ST / MARSHALL ST	0	SS	0	0
SS	523	W	5TH AVE / MARSHALL ST	0	0	SS	SS
SS	523	E	5TH AVE / MARSHALL ST	0	0	SS	SS
SS	524	W	5TH AVE / MIDDLE ST	0	0	0	SS
SS	525	E	5TH AVE SCOTT ST	0	0	SS	0
SS	526	W	6TH AVE / SCOTT ST	0	0	0	SS
SS	527	E	6TH AVE JAMES ST	0	0	SS	0
SS	528	W	S BROADWAY ST / JAMES ST	0	0	SS	SS
SS	528	E	S BROADWAY ST / JAMES ST	0	0	SS	SS
SS	529	W	COLUMBIA AVE / JAMES ST	0	0	SS	SS
SS	529	E	COLUMBIA AVE / JAMES ST	0	0	SS	SS
SS	530	W	9TH AVE / JAMES ST	0	0	SS	SS
SS	530	E	9TH AVE / JAMES ST	0	0	SS	SS
SS	531	W	CENTRAL AVE / JAMES ST	0	0	SS	SS
SS	531	E	CENTRAL AVE / JAMES ST	0	0	SS	SS
SS	532	W	LAWRENCE AVE / QUINCY ST	0	0	SS	SS
SS	532	E	LAWRENCE AVE / QUINCY ST	0	0	SS	SS
SS	533	S	LAWRENCE AVE / KANSAS ST	SS	SS	0	0
SS	533	N	LAWRENCE AVE / KANSAS ST	SS	SS	0	0
SS	534	S	CENTRAL AVE / KANSAS ST	SS	SS	SS	SS
SS	534	W	CENTRAL AVE / KANSAS ST	SS	SS	SS	SS
SS	534	N	CENTRAL AVE / KANSAS ST	SS	SS	SS	SS
SS	534	E	CENTRAL AVE / KANSAS ST	SS	SS	SS	SS
SS	535	S	9TH AVE / KANSAS ST	SS	SS	0	0
SS	535	N	9TH AVE / KANSAS ST	SS	SS	0	0
SS	536	S	COLUMBIA AVE / KANSAS ST	SS	SS	0	0
SS	536	N	COLUMBIA AVE / KANSAS ST	SS	SS	0	0
SS	537	E	S BROADWAY ST / KANSAS ST	0	0	SS	0
SS	538	W	S BROADWAY ST / OHIO ST	0	0	SS	SS
SS	538	E	S BROADWAY ST / OHIO ST	0	0	SS	SS
SS	539	W	COLUMBIA ST / OHIO ST	0	0	SS	SS
SS	539	E	COLUMBIA ST / OHIO ST	0	0	SS	SS

2019 Intersection Traffic Control Device Master Index
Adopted by Ordinance No. 8110

Traffic Control Device	Intersection No.	Direction of Traffic Controlled	Intersection Name	NB	SB	EB	WB
SS	540	W	9TH AVE / OHIO ST	0	0	SS	SS
SS	540	E	9TH AVE / OHIO ST	0	0	SS	SS
SS	541	S	CENTRAL AVE / OHIO ST	0	SS	0	0
SS	543	W	6TH AVE / PROSPECT ST	0	0	0	SS
SS	544	W	5TH AVE PROSPECT ST	0	0	SS	SS
SS	544	E	5TH AVE PROSPECT ST	0	0	SS	SS
SS	545	W	4TH AVE / MARSHALL ST	0	0	SS	SS
SS	545	E	4TH AVE / MARSHALL ST	0	0	SS	SS
SS	546	W	3RD AVE / MARSHALL ST	0	0	SS	SS
SS	546	E	3RD AVE / MARSHALL ST	0	0	SS	SS
SS	547	W	3RD AVE / CONGRESS ST	0	0	SS	SS
SS	547	E	3RD AVE / CONGRESS ST	0	0	SS	SS
SS	548	W	S 5TH ST / PINE ST	0	0	0	SS
SS	549	E	2ND AVE / CONGRESS ST	0	0	SS	0
SS	550	WB	2ND AVE / ARCH ST	0	0	0	SS
SS	551	E	2ND AVE / MARSHALL ST	0	0	SS	0
SS	552	W	2ND AVE / VINE ST	0	0	0	SS
SS	553	E	2ND AVE / MIDDLE ST	0	0	SS	0
SS	554	S	3RD AVE / MIDDLE ST	SS	SS	0	0
SS	554	N	3RD AVE / MIDDLE ST	SS	SS	0	0
SS	555	NB	4TH AVE / MIDDLE ST	SS	SS	0	0
SS	555	SB	4TH AVE / MIDDLE ST	SS	SS	0	0
SS	556	S	4TH AVE / PROSPECT ST	SS	SS	0	0
SS	556	N	4TH AVE / PROSPECT ST	SS	SS	0	0
SS	557	S	3RD AVE / PROSPECT ST	SS	SS	0	0
SS	557	N	3RD AVE / PROSPECT ST	SS	SS	0	0
SS	558	W	2ND AV / ELM ST	0	0	0	SS
SS	559	N	S 6TH ST / ELM ST	SS	0	0	0
SS	561	W	2ND AVE LINN ST	0	0	0	SS
SS	562	E	2ND AVE / PROSPECT ST	0	0	SS	0
SS	563	E	2ND AVE / OHIO ST	0	0	SS	0
SS	564	S	3RD AVE / OHIO ST	SS	SS	0	0
SS	564	N	3RD AVE / OHIO ST	SS	SS	0	0
SS	565	S	4TH AVE / OHIO ST	SS	SS	0	0
SS	565	N	4TH AVE / OHIO ST	SS	SS	0	0
SS	566	W	5TH AVE / OHIO ST	0	0	SS	SS
SS	566	E	5TH AVE / OHIO ST	0	0	SS	SS
SS	568	S	6TH AVE / OHIO ST	0	SS	0	0
SS	569	W	10TH AVE / MICHIGAN ST	0	0	SS	SS
SS	569	E	10TH AVE / MICHIGAN ST	0	0	SS	SS
TL	571	2W	10TH AVE / PENNSYLVANIA ST	TL	TL	TL	TL
TL	571	2N	10TH AVE / PENNSYLVANIA ST	TL	TL	TL	TL
TL	571	2E	10TH AVE / PENNSYLVANIA ST	TL	TL	TL	TL
TL	571	2S	10TH AVE / PENNSYLVANIA ST	TL	TL	TL	TL
SS	572	S	LAWRENCE AVE/PENNSYLVANIA ST	SS	SS	0	0

2019 Intersection Traffic Control Device Master Index
Adopted by Ordinance No. 8110

Traffic Control Device	Intersection No.	Direction of Traffic Controlled	Intersection Name	NB	SB	EB	WB
SS	572	N	LAWRENCE AVE/PENNSYLVANIA ST	SS	SS	0	0
SS	573	N	9TH AVE / PENNSYLVANIA ST (W)	SS	0	0	0
SS	574	S	9TH AVE / PENNSYLVANIA ST (E)	0	SS	0	0
SS	575	N	GARLAND ST / PENNSYLVANIA ST	SS	0	0	0
SS	576	S	S BROADWAY ST/PENNSYLVANIA ST	SS	SS	SS	SS
SS	576	W	S BROADWAY ST/PENNSYLVANIA ST	SS	SS	SS	SS
SS	576	E	S BROADWAY ST/PENNSYLVANIA ST	SS	SS	SS	SS
SS	576	N	S BROADWAY ST/PENNSYLVANIA ST	SS	SS	SS	SS
SS	577	S	W 7TH ST / PENNSYLVANIA ST	0	SS	0	0
SS	578	W	5TH AVE / PENNSYLVANIA ST	0	0	SS	SS
SS	578	E	5TH AVE / PENNSYLVANIA ST	0	0	SS	SS
SS	579	S	4TH AVE / PENNSYLVANIA ST	SS	SS	0	0
SS	579	N	4TH AVE / PENNSYLVANIA ST	SS	SS	0	0
SS	580	S	3RD AVE / PENNSYLVANIA ST	SS	SS	0	0
SS	580	N	3RD AVE / PENNSYLVANIA ST	SS	SS	0	0
SS	581	W	2ND AVE / PENNSYLVANIA ST (S)	0	0	0	SS
SS	582	E	2ND AVE / PENNSYLVANIA ST (N)	0	0	SS	0
SS	583	W	2ND AVE / ISABELLE ST	0	0	0	SS
SS	584	E	2ND AVE / MICHIGAN ST	0	0	SS	0
SS	585	W	2ND AVE / ELIZABETH ST	0	0	0	SS
SS	586	S	3RD AVE / MICHIGAN ST	SS	SS	0	0
SS	586	N	3RD AVE / MICHIGAN ST	SS	SS	0	0
SS	587	S	4TH AVE / MICHIGAN ST	SS	SS	0	0
SS	587	N	4TH AVE / MICHIGAN ST	SS	SS	0	0
SS	588	W	5TH AVE / MICHIGAN ST	0	0	SS	SS
SS	588	E	5TH AVE / MICHIGAN ST	0	0	SS	SS
SS	591	W	S BROADWAY ST / MICHIGAN ST	0	0	SS	SS
SS	591	E	S BROADWAY ST / MICHIGAN ST	0	0	SS	SS
SS	593	S	COLUMBIA AVE / MICHIGAN ST	0	SS	0	0
SS	594	W	9TH AVE / MICHIGAN ST	0	0	SS	SS
SS	594	E	9TH AVE / MICHIGAN ST	0	0	SS	SS
SS	595	W	S 5TH ST / PENNSYLVANIA ST	0	0	SS	SS
SS	595	E	S 5TH ST / PENNSYLVANIA ST	0	0	SS	SS
SS	596	S	ROSE ST / PENNSYLVANIA ST	SS	SS	0	0
SS	596	N	ROSE ST / PENNSYLVANIA ST	SS	SS	0	0
SS	597	E	S 4TH ST / PENNSYLVANIA ST	0	0	SS	0
SS	598	E	S 5TH ST / ISABELLE ST	0	0	SS	0
SS	599	E	S 5TH ST / ELIZABETH ST	0	0	SS	0
SS	600	W	S 5TH ST / MAPLE ST	0	0	0	SS
SS	601	E	S 4TH ST / MAPLE ST	0	0	SS	0
TL	602	W	S 4TH ST / POPLAR ST	TS	0	0	0
TL	602	W	S 4TH ST / POPLAR ST	0	TS	0	0
TL	602	W	S 4TH ST / POPLAR ST	0	0	TS	0
TL	602	W	S 4TH ST / POPLAR ST	0	0	0	TS
SS	603	S	S 3RD ST / POPLAR ST	0	SS	0	0

2019 Intersection Traffic Control Device Master Index
Adopted by Ordinance No. 8110

Traffic Control Device	Intersection No.	Direction of Traffic Controlled	Intersection Name	NB	SB	EB	WB
SS	604	S	S 2ND ST / POPLAR ST	SS	SS	SS	0
SS	604	N	S 2ND ST / POPLAR ST	SS	SS	SS	0
SS	604	W	S 2ND ST / POPLAR ST	SS	SS	SS	0
SS	605	E	S 2ND ST / MAPLE ST	0	0	SS	0
SS	606	W	S 3RD ST / MAPLE ST	0	0	0	SS
SS	607	E	S 2ND ST / LINN ST	0	0	SS	0
SS	608	W	S 3RD ST / LINN ST	0	0	SS	SS
SS	608	E	S 3RD ST / LINN ST	0	0	SS	SS
SS	609	W	S 4TH ST / LINN ST	0	0	SS	SS
SS	609	E	S 4TH ST / LINN ST	0	0	SS	SS
SS	610	S	S 5TH ST / LINN ST	SS	SS	SS	SS
SS	610	W	S 5TH ST / LINN ST	SS	SS	SS	SS
SS	610	N	S 5TH ST / LINN ST	SS	SS	SS	SS
SS	610	E	S 5TH ST / LINN ST	SS	SS	SS	SS
SS	611	W	S 5TH ST / ELM ST	0	0	SS	SS
SS	611	E	S 5TH ST / ELM ST	0	0	SS	SS
SS	612	W	S 4TH ST / ELM ST	0	0	SS	SS
SS	612	E	S 4TH ST / ELM ST	0	0	SS	SS
SS	613	W	S 3RD ST / ELM ST	0	0	SS	SS
SS	613	E	S 3RD ST / ELM ST	0	0	SS	SS
SS	614	W	S 2ND ST / ELM ST	0	0	SS	SS
SS	614	E	S 2ND ST / ELM ST	0	0	SS	SS
SS	616	W	S 5TH ST / VINE ST	0	0	SS	SS
SS	616	E	S 5TH ST / VINE ST	0	0	SS	SS
SS	617	WB	S 5TH ST / ARCH ST	0	0	SS	SS
SS	617	EB	S 5TH ST / ARCH ST	0	0	SS	SS
SS	618	W	S 4TH ST / VINE ST	0	0	SS	SS
SS	618	E	S 4TH ST / VINE ST	0	0	SS	SS
SS	619	W	S 3RD ST / VINE ST	0	0	SS	SS
SS	619	E	S 3RD ST / VINE ST	0	0	SS	SS
SS	620	W	S 2ND ST / VINE ST	0	0	SS	SS
SS	620	E	S 2ND ST / VINE ST	0	0	SS	SS
SS	623	WB	S 2ND ST / ARCH ST	0	0	SS	SS
SS	623	EB	S 2ND ST / ARCH ST	0	0	SS	SS
SS	624	EB	S 3RD ST / ARCH ST	0	0	SS	SS
SS	624	WB	S 3RD ST / ARCH ST	0	0	SS	SS
SS	625	3S	S 4TH ST / ARCH ST	TL	TL	TL	TL
SS	625	3N	S 4TH ST / ARCH ST	TL	TL	TL	TL
SS	626	W	S 4TH ST / PINE ST	0	0	SS	SS
SS	626	E	S 4TH ST / PINE ST	0	0	SS	SS
SS	627	W	S 3RD ST / PINE ST	0	0	SS	SS
SS	627	E	S 3RD ST / PINE ST	0	0	SS	SS
SS	628	W	S 2ND ST / PINE ST	0	0	SS	SS
SS	628	E	S 2ND ST / PINE ST	0	0	SS	SS
SS	630	N	CLEVELAND TERR/PENNSYLVANIA ST	SS	0	0	0

2019 Intersection Traffic Control Device Master Index
Adopted by Ordinance No. 8110

Traffic Control Device	Intersection No.	Direction of Traffic Controlled	Intersection Name	NB	SB	EB	WB
SS	631	S	S 24TH ST / HEBBELN DR	SS	SS	0	0
SS	631	N	S 24TH ST / HEBBELN DR	SS	SS	0	0
SS	632	N	S 23RD ST / HEBBELN DR	SS	0	0	0
SS	633	E	S 22ND ST / HEBBELN DR	0	0	SS	0
SS	636	S	S 24TH ST / VILAS ST	0	SS	0	0
SS	637	SW	S 23RD ST / VILAS ST	SS	SS	0	0
SS	637	NE	S 23RD ST / VILAS ST	SS	SS	0	0
SS	638	S	S 22ND TERR / VILAS ST	0	SS	0	0
SS	639	S	S 22ND ST / VILAS ST	SS	SS	SS	SS
SS	639	E	S 22ND ST / VILAS ST	SS	SS	SS	SS
SS	639	N	S 22ND ST / VILAS ST	SS	SS	SS	SS
SS	639	W	S 22ND ST / VILAS ST	SS	SS	SS	SS
SS	643	S	CAMBRIDGE ST / THORNTON ST	SS	SS	0	0
SS	643	N	CAMBRIDGE ST / THORNTON ST	SS	SS	0	0
SS	644	N	S 19TH ST / THORNTON ST	SS	0	0	0
SS	645	S	S 18TH ST / THORNTON ST	0	SS	0	0
SS	646	W	S 18TH ST / RIDGE RD	0	0	SS	SS
SS	646	E	S 18TH ST / RIDGE RD	0	0	SS	SS
SS	647	N	S 17TH TERR / THORNTON ST	SS	0	0	0
SS	649	E	S 17TH ST / MARION ST	0	0	SS	0
SS	650	W	S 17TH TERR / MARION ST	0	0	0	SS
SS	651	E	S 17TH ST / EVERGREEN ST	0	0	SS	0
SS	652	S	S 17TH TERR / EVERGREEN ST	SS	SS	0	0
SS	652	N	S 17TH TERR / EVERGREEN ST	SS	SS	0	0
SS	653	N	CAMBRIDGE ST / EVERGREEN ST	SS	0	0	0
SS	654	W	S 19TH TERR / EVERGREEN ST	0	0	0	SS
SS	655	W	S 20TH ST / S19TH TERR	0	0	0	SS
TL	658	2W	S 20TH ST VILAS ST	TL	TL	TL	TL
TL	658	3N	S 20TH ST VILAS ST	TL	TL	TL	TL
TL	658	2E 1 S	S 20TH ST VILAS ST	TL	TL	TL	TL
TL	658	3S	S 20TH ST VILAS ST	TL	TL	TL	TL
SS	660	S	S 17TH ST / VILAS ST	0	SS	0	0
SS	661	S	S 16TH TERR / VILAS ST	0	SS	0	0
SS	662	S	S 16TH ST / VILAS ST	SS	SS	0	0
SS	662	N	S 16TH ST / VILAS ST	SS	SS	0	0
SS	663	S	FOLSOM ST / VILAS ST	SS	SS	0	0
SS	663	N	FOLSOM ST / VILAS ST	SS	SS	0	0
SS	664	E	S 16TH ST / HOLMAN ST	0	0	SS	0
SS	665	S	N 6TH ST / DELAWARE ST	SS	SS	SS	0
SS	665	N	N 6TH ST / DELAWARE ST	SS	SS	SS	0
SS	665	E	N 6TH ST / DELAWARE ST	SS	SS	SS	0
SS	666	S	FRANCIS AVE / VILAS ST	SS	SS	0	0
SS	666	N	FRANCIS AVE / VILAS ST	SS	SS	0	0
SS	667	S	S 14TH ST / VILAS ST	SS	SS	0	0
SS	667	N	S 14TH ST / VILAS ST	SS	SS	0	0

2019 Intersection Traffic Control Device Master Index
Adopted by Ordinance No. 8110

Traffic Control Device	Intersection No.	Direction of Traffic Controlled	Intersection Name	NB	SB	EB	WB
SS	668	E	SANTA FE ST / FRANCIS CT	0	0	SS	0
SS	669	W	S 15TH ST / SANTA FE ST	0	0	SS	SS
SS	669	E	S 15TH ST / SANTA FE ST	0	0	SS	SS
SS	670	N	SANTA FE ST / FOLSOM ST	SS	0	0	0
SS	671	W	S 16TH ST / SANTA FE ST	0	0	0	SS
SS	672	W	S 15TH ST / JEANNE CT	0	0	0	SS
SS	675	W	S 15TH ST / MARION ST	0	0	0	SS
SS	678	S	VALHALLA PL / VILAS ST	0	SS	0	0
SS	679	N	S 13TH ST / VILAS ST	SS	0	0	0
SS	680	S	WESTWOOD DR / VILAS ST	0	SS	0	0
SS	681	S	GRAND AVE / VILAS ST	0	SS	0	0
SS	682	W	10TH AVE / VILAS ST	0	0	SS	SS
SS	682	E	10TH AVE / VILAS ST	0	0	SS	SS
SS	683	E	10TH AVE / HOLMAN ST	0	0	SS	0
TL	684	2W	10TH AVE / LIMIT ST	TL	TL	TL	TL
TL	684	2N	10TH AVE / LIMIT ST	TL	TL	TL	TL
TL	684	2E	10TH AVE / LIMIT ST	TL	TL	TL	TL
TL	684	2S	10TH AVE / LIMIT ST	TL	TL	TL	TL
SS	685	N	LIMIT ST / MEADOW RD	SS	0	0	0
SS	686	N	GRAND AVE / LIMIT ST	SS	0	0	0
SS	687	N	NEW LAWRENCE RD / LIMIT ST	SS	0	0	0
SS	688	S	S 13TH ST / HOLMAN ST	0	SS	0	0
SS	689	W	S 14TH ST / HOLMAN ST	0	0	0	SS
SS	690	S	S 14TH ST / LIMIT ST	SS	SS	0	0
SS	690	N	S 14TH ST / LIMIT ST	SS	SS	0	0
SS	691	S	FRANCIS AVE / LIMIT ST	0	SS	0	0
SS	692	W	S 15TH ST / LIMIT ST	0	0	SS	SS
SS	692	E	S 15TH ST / LIMIT ST	0	0	SS	SS
SS	693	S	FOLSOM ST / LIMIT ST	0	SS	0	0
SS	694	S	S 16TH ST / LIMIT ST	0	SS	0	0
SS	695	W	S 20TH ST / LIMIT ST	0	0	SS	SS
SS	695	E	S 20TH ST / LIMIT ST	0	0	SS	SS
SS	696	N	SOMERSET DR / LIMIT ST	SS	0	0	0
SS	698	W	WESTWOOD DR / SANTA FE ST	0	0	SS	SS
SS	698	E	WESTWOOD DR / SANTA FE ST	0	0	SS	SS
SS	699	E	GRAND AV / SANTA FE ST	0	0	SS	0
SS	700	W	10TH AVE / SANTA FE ST	0	0	0	SS
SS	701	E	10TH AVE / SHERMAN ST	0	0	SS	0
SS	702	S	KINGMAN ST / SHERMAN ST	0	SS	0	0
SS	703	W	GRAND AVE / SHERMAN ST	0	0	SS	SS
SS	703	E	GRAND AVE / SHERMAN ST	0	0	SS	SS
SS	705	W	10TH AVE / MARION ST	0	0	SS	SS
SS	705	E	10TH AVE / MARION ST	0	0	SS	SS
SS	707	W	GRAND AVE / MARION ST	0	0	0	SS
SS	708	W	10TH AVE / THORNTON ST	0	0	0	SS

2019 Intersection Traffic Control Device Master Index
Adopted by Ordinance No. 8110

Traffic Control Device	Intersection No.	Direction of Traffic Controlled	Intersection Name	NB	SB	EB	WB
SS	709	W	10TH AVE / HALDERMAN ST	0	0	SS	SS
SS	709	E	10TH AVE / HALDERMAN ST	0	0	SS	SS
SS	710	S	GRAND AVE / HALDERMAN ST	0	SS	0	0
SS	711	S	KLEMP ST / HALDERMAN ST	0	SS	0	0
SS	718	W	WESTWOOD DR / FOREST LN (N)	0	0	0	SS
SS	722	S	S 11TH ST / MICHIGAN ST	SS	SS	0	0
SS	722	N	S 11TH ST / MICHIGAN ST	SS	SS	0	0
SS	723	W	GRAND AV / MICHIGAN ST	0	0	0	SS
SS	724	S	S 11TH ST / PENNSYLVANIA ST	SS	SS	0	0
SS	724	N	S 11TH ST / PENNSYLVANIA ST	SS	SS	0	0
SS	725	S	GRAND AVE / PENNSYLVANIA ST	SS	SS	0	0
SS	725	N	GRAND AVE / PENNSYLVANIA ST	SS	SS	0	0
SS	726	W	KLEMP ST / PENNSYLVANIA ST	0	0	0	SS
SS	727	W	KLEMP ST / SOUTH ST	0	0	0	SS
SS	728	S	GRAND AV / SOUTH ST	SS	SS	0	0
SS	728	N	GRAND AV / SOUTH ST	SS	SS	0	0
SS	729	S	S 11TH ST / SOUTH ST	0	SS	0	0
SS	730	E	10TH AVE / SOUTH ST	0	0	SS	0
SS	736	N	MONTEZUMA ST/ REES ST	SS	0	0	0
SS	737	W	ARTHUR ST / S BROADWAY ST	0	0	0	SS
SS	739	S	CLEVELAND TERR / REES ST	SS	SS	0	0
SS	739	N	CLEVELAND TERR / REES ST	SS	SS	0	0
SS	740	W	S BROADWAY ST / REES ST	0	0	SS	SS
SS	740	E	S BROADWAY ST / REES ST	0	0	SS	SS
SS	740	EB	LAWRENCE AVE / HALDERMAN ST	0	0	SS	0
SS	742	S	GIRARD ST THORNTON ST	SS	SS	0	0
SS	742	N	GIRARD ST THORNTON ST	SS	SS	0	0
SS	743	S	GIRARD ST / MARION ST	SS	SS	0	0
SS	743	N	GIRARD ST / MARION ST	SS	SS	0	0
SS	744	W	SPRING GARDEN RD/MARION ST	0	0	SS	SS
SS	744	E	SPRING GARDEN RD/MARION ST	0	0	SS	SS
SS	745	N	SPRING GARDEN RD/THORNTON ST	SS	0	0	0
SS	746	N	GARLAND ST / THORNTON ST	SS	0	0	0
SS	747	E	GARLAND ST / MARION ST	0	0	SS	0
SS	748	S	MONTEZUMA ST/THORNTON ST	0	SS	0	0
SS	749	S	S BROADWAY ST/THORNTON ST	0	SS	0	0
SS	751	SB	CLEVELAND TER / GARFIELD ST	0	SS	0	0
SS	752	S	THORNTON ST / MAPLE AVE	SS	SS	0	0
SS	752	N	THORNTON ST / MAPLE AVE	SS	SS	0	0
SS	755	N	W 7TH ST / REES ST	SS	0	0	0
SS	756	E	5TH AVE / REES ST	0	0	SS	0
SS	757	EB	5TH AVE / DONIPHAN ST	0	0	SS	0
SS	758	S	5TH AVE / THORNTON ST	0	SS	0	0
SS	759	S	4TH AVE / THORNTON ST	SS	SS	0	0
SS	759	N	4TH AVE / THORNTON ST	SS	SS	0	0

2019 Intersection Traffic Control Device Master Index
Adopted by Ordinance No. 8110

Traffic Control Device	Intersection No.	Direction of Traffic Controlled	Intersection Name	NB	SB	EB	WB
TL	760	W	2ND AVE / THORNTON ST	TL	TL	TL	TL
TL	760	3N 1E	2ND AVE / THORNTON ST	TL	TL	TL	TL
TL	760	E	2ND AVE / THORNTON ST	TL	TL	TL	TL
TL	760	3S 1W	2ND AVE / THORNTON ST	TL	TL	TL	TL
SS	761	W	2ND AVE / BUTTINGER PL	0	0	0	SS
SS	762	E	2ND AVE / DONIPHAN ST	0	0	SS	0
SS	764	E	2ND AVE / REES ST	0	0	SS	0
SS	767	E	2ND AVE / SOUTH ST	0	0	SS	0
SS	768	S	3RD AVE / SOUTH ST	SS	SS	0	0
SS	768	N	3RD AVE / SOUTH ST	SS	SS	0	0
SS	769	S	4TH AVE / SOUTH ST	0	SS	0	0
SS	770	W	5TH AVE / SOUTH ST	0	0	0	SS
SS	771	E	S 4TH ST / REES ST	0	0	SS	0
SS	772	W	S 5TH ST / REES ST	0	0	0	SS
SS	773	E	S 5TH ST / REASER ST	0	0	SS	0
SS	774	E	S 4TH ST / APACHE ST	0	0	SS	0
SS	775	S	ROSE ST / APACHE ST	SS	SS	0	0
SS	775	N	ROSE ST / APACHE ST	SS	SS	0	0
SS	776	W	S 5TH ST / BUTTINGER PL	0	0	SS	SS
SS	776	W	S 5TH ST / BUTTINGER PL	0	0	SS	SS
SS	776	E	S 5TH ST / BUTTINGER PL	0	0	SS	SS
SS	777	E	S 4TH ST / THORNTON ST	0	0	SS	0
Y	778	S	ROSE ST / THORNTON ST	0	Y	0	0
SS	779	S	S 5TH ST / THORNTON ST	SS	SS	SS	SS
SS	779	W	S 5TH ST / THORNTON ST	SS	SS	SS	SS
SS	779	E	S 5TH ST / THORNTON ST	SS	SS	SS	SS
SS	779	N	S 5TH ST / THORNTON ST	SS	SS	SS	SS
TL	780	1W 1N	S 4TH ST / MARION ST	TL	TL	TL	TL
TL	780	2N 1 E	S 4TH ST / MARION ST	TL	TL	TL	TL
TL	780	1S 1E	S 4TH ST / MARION ST	TL	TL	TL	TL
TL	780	2S 1 W	S 4TH ST / MARION ST	TL	TL	TL	TL
SS	781	N	ROSE ST / MARION ST	SS	0	0	0
SS	782	W	S 5TH ST / MARION ST	0	0	SS	SS
SS	782	E	S 5TH ST / MARION ST	0	0	SS	SS
SS	783	E	S 4TH ST / EVERGREEN ST	0	0	SS	0
SS	784	S	ROSE ST / EVERGREEN ST	0	SS	0	0
SS	786	W	2ND AVE MARION ST	0	0	0	SS
SS	787	W	S 4TH ST / SANTA FE ST	0	0	0	SS
SS	788	W	S 4TH ST / SHERIDAN AVE	0	0	SS	SS
SS	788	E	S 4TH ST / SHERIDAN AVE	0	0	SS	SS
SS	789	W	S 4TH ST / VILAS ST	0	0	SS	SS
SS	789	E	S 4TH ST / VILAS ST	0	0	SS	SS
SS	790	E	2ND AVE / EVERGREEN ST	0	0	SS	0
SS	791	E	2ND AVE / SHERMAN ST	0	0	SS	0
SS	792	W	2ND AVE / SANTA FE ST	0	0	SS	SS

2019 Intersection Traffic Control Device Master Index
Adopted by Ordinance No. 8110

Traffic Control Device	Intersection No.	Direction of Traffic Controlled	Intersection Name	NB	SB	EB	WB
SS	792	E	2ND AVE / SANTA FE ST	0	0	SS	SS
SS	793	W	2ND AVE / SHERIDAN ST	0	0	0	SS
SS	794	W	2ND AVE / VILAS ST	0	0	0	SS
TL	795	WB	2ND AV / LIMIT ST	TL	TL	0	TL
TL	795	SB	2ND AV / LIMIT ST	TL	TL	0	TL
TL	795	NB	2ND AV / LIMIT ST	TL	TL	0	TL
TL	795	SB, NB	2ND AV / LIMIT ST	TL	TL	0	TL
SS	796	S	3RD AVE / SANTA FE ST	SS	SS	0	0
SS	796	N	3RD AVE / SANTA FE ST	SS	SS	0	0
SS	797	W	3RD AVE / SHERMAN ST	0	0	SS	SS
SS	797	E	3RD AVE / SHERMAN ST	0	0	SS	SS
SS	798	N	3RD AVE / EVERGREEN ST	SS	0	0	0
SS	799	E	4TH AVE / MARION ST	0	0	SS	0
SS	799	WB	4TH AVE / MARION ST	0	0	SS	SS
SS	800	S	4TH AVE / EVERGREEN ST (E)	0	SS	0	0
SS	801	N	4TH AVE / EVERGREEN ST (W)	SS	0	0	0
SS	803	W	MAPLE AVE / MARION ST	0	0	0	SS
SS	804	W	4TH AVE / SHERMAN ST	0	0	0	SS
SS	805	S	4TH AVE / SANTA FE ST	SS	SS	0	0
SS	805	N	4TH AVE / SANTA FE ST	SS	SS	0	0
SS	806	W	MAPLE AVE / SANTA FE ST	0	0	SS	SS
SS	806	E	MAPLE AVE / SANTA FE ST	0	0	SS	SS
SS	810	N	OLDE CREEK CT / SANTA FE ST	SS	0	0	0
SS	811	N	BROADWAY TERR / SANTA FE ST	SS	0	0	0
SS	812	E	BROADWAY TERR / VILAS ST	0	0	SS	0
TL	813	2W 1S	LIMIT ST / SHRINE PARK RD	TL	TL	TL	TL
TL	813	1N	LIMIT ST / SHRINE PARK RD	TL	TL	TL	TL
TL	813	2E 1S	LIMIT ST / SHRINE PARK RD	TL	TL	TL	TL
TL	813	1S	LIMIT ST / SHRINE PARK RD	TL	TL	TL	TL
SS	814	N	LIMIT ST / VIRGINIA CIR	SS	0	0	0
SS	815	S	BROADWAY TERR / LIMIT ST	0	SS	0	0
SS	816	S	LIMIT ST / GARLAND ST (E)	0	SS	0	0
SS	817	N	LIMIT ST / GARLAND ST (W)	SS	0	0	0
SS	818	S	SPRING GARDEN RD/ LIMIT ST	SS	SS	0	0
SS	818	N	SPRING GARDEN RD/ LIMIT ST	SS	SS	0	0
SS	819	S	GIRARD ST / LIMIT ST	0	SS	0	0
SS	820	S	GARLAND ST / VILAS ST	SS	SS	0	0
SS	820	N	GARLAND ST / VILAS ST	SS	SS	0	0
SS	821	S	GARLAND ST / SANTA FE ST	SS	SS	0	0
SS	821	N	GARLAND ST / SANTA FE ST	SS	SS	0	0
SS	822	S	SPRING GARDEN RD/SANTA FE ST	SS	SS	0	0
SS	822	N	SPRING GARDEN RD/SANTA FE ST	SS	SS	0	0
SS	823	S	SPRING GARDEN RD/ VILAS ST	SS	SS	0	0
SS	823	N	SPRING GARDEN RD/ VILAS ST	SS	SS	0	0
SS	824	S	GIRARD ST / VILAS ST	SS	SS	0	0

2019 Intersection Traffic Control Device Master Index
Adopted by Ordinance No. 8110

Traffic Control Device	Intersection No.	Direction of Traffic Controlled	Intersection Name	NB	SB	EB	WB
SS	824	N	GIRARD ST / VILAS ST	SS	SS	0	0
SS	825	S	GIRARD ST / SANTA FE ST	SS	SS	0	0
SS	825	N	GIRARD ST / SANTA FE ST	SS	SS	0	0
TL	826	3W	HUGHES RD / LIMIT ST	TL	TL	TL	TL
TL	826	1E 1N	HUGHES RD / LIMIT ST	TL	TL	TL	TL
TL	826	3E 1S	HUGHES RD / LIMIT ST	TL	TL	TL	TL
TL	826	1S	HUGHES RD / LIMIT ST	TL	TL	TL	TL
SS	827	W	STATE ST / LOGAN ST	0	0	0	SS
SS	828	W	STATE ST / VILAS ST	0	0	0	SS
SS	830	W	S 4TH ST / LOGAN ST	0	0	SS	SS
SS	830	E	S 4TH ST / LOGAN ST	0	0	SS	SS
TL	831	2W 1N	S 4TH ST / LIMIT ST	TL	TL	TL	TL
TL	831	3N	S 4TH ST / LIMIT ST	TL	TL	TL	TL
TL	831	2E 1S	S 4TH ST / LIMIT ST	TL	TL	TL	TL
TL	831	1S	S 4TH ST / LIMIT ST	TL	TL	TL	TL
SS	832	N	LIMIT ST / TRAILHEAD DR	SS	0	0	0
SS	833	S	S 2ND ST / LIMIT ST	0	SS	0	0
SS	834	N	LIMIT ST / MARTIN LUTHER KING DR	SS	0	0	0
SS	835	N	RALPH BUNCHE DR / LIMIT ST	SS	0	0	0
SS	836	S	WILSON AVE / LIMIT ST	SS	SS	0	0
SS	836	N	WILSON AVE / LIMIT ST	SS	SS	0	0
SS	837	E	LIMIT ST / HOME PL	0	0	SS	0
SS	838	E	HOME PL / LOGAN ST	0	0	SS	0
SS	839	W	WILSON AVE / LOGAN ST	0	0	SS	SS
SS	839	E	WILSON AVE / LOGAN ST	0	0	SS	SS
SS	840	W	WILSON AVE / VILAS ST	0	0	SS	SS
SS	840	E	WILSON AVE / VILAS ST	0	0	SS	SS
SS	841	W	WILSON AVE / SHERIDAN ST	0	0	SS	SS
SS	841	E	WILSON AVE / SHERIDAN ST	0	0	SS	SS
SS	842	W	S 1ST ST / SHERIDAN ST	0	0	SS	SS
SS	842	E	S 1ST ST / SHERIDAN ST	0	0	SS	SS
SS	843	W	S 1ST ST / VILAS ST	0	0	SS	SS
SS	843	E	S 1ST ST / VILAS ST	0	0	SS	SS
SS	844	W	S 1ST ST / LOGAN ST	0	0	SS	SS
SS	844	E	S 1ST ST / LOGAN ST	0	0	SS	SS
SS	845	S	S 1ST ST / LIMIT ST	0	SS	0	0
SS	849	W	WILSON AVE / SANTA FE ST	0	0	SS	SS
SS	849	E	WILSON AVE / SANTA FE ST	0	0	SS	SS
SS	850	W	S 1ST ST / SANTA FE ST	0	0	SS	SS
SS	850	E	S 1ST ST / SANTA FE ST	0	0	SS	SS
SS	854	N	S 1ST ST / MARION ST	SS	0	0	0
SS	855	S	S 2ND ST / MARION ST	0	SS	0	0
SS	857	W	SOMERSET DR / SOMERSET TERR	0	0	0	SS
SS	859	SW	S 20TH ST / TONGANOSSIE DR	0	0	SS	SS
SS	859	NE	S 20TH ST / TONGANOSSIE DR	0	0	SS	SS

2019 Intersection Traffic Control Device Master Index
Adopted by Ordinance No. 8110

Traffic Control Device	Intersection No.	Direction of Traffic Controlled	Intersection Name	NB	SB	EB	WB
SS	860	S	MICHALS RD / TONGANOSSIE DR	0	SS	0	0
SS	861	N	MICHALS RD / STONEWALL CT	SS	0	0	0
SS	862	N	MICHALS RD / CLAYTON DR	SS	0	0	0
SS	863	N	MICHALS RD / RICHMOND DR	SS	0	0	0
SS	864	W	RICHMOND DR / SUMTER CT	0	0	SS	SS
SS	864	E	RICHMOND DR / SUMTER CT	0	0	SS	SS
SS	866	W	MAGNOLIA DR / RICHMOND DR	0	0	0	SS
SS	867	S	MAGNOLIA DR / LEE CT	0	SS	0	0
SS	869	SB	LEXINGTON CT / MAGNOLIA DR	0	SS	0	0
SS	870	E	MAGNOLIA DR / TONGANOSSIE DR	0	0	SS	0
SS	871	E	SHENANDOAH DR / TONGANOSSIE DR	0	0	SS	0
SS	872	N	SHENANDOAH DR / CLAYTON CT	SS	0	0	0
SS	873	N	SHENANDOAH DR / DISSIE DR	SS	0	0	0
SS	875	W	RICHMOND DR / LINCOLN CT	0	0	0	SS
SS	876	S	RICHMOND DR / SHENANDOAH DR	SS	SS	0	0
SS	876	N	RICHMOND DR / SHENANDOAH DR	SS	SS	0	0
SS	877	N	SHENANDOAH DR / GETTYSBURG DR	SS	0	0	0
SS	878	W	GETTYSBURG DR / CADES CV	0	0	0	SS
SS	879	SW	GETTYSBURG DR / RICHMOND DR	0	0	SS	SS
SS	879	NE	GETTYSBURG DR / RICHMOND DR	0	0	SS	SS
SS	880	N	GETTYSBURG DR / CAVALRY CT	SS	0	0	0
SS	881	E	S 20TH ST / ESTATES DR	0	0	SS	0
SS	882	W	S 21ST ST / ESTATES DR	0	0	0	SS
SS	884	NB	S 21ST ST / S 22ND ST	SS	0	0	0
SS	885	E	S 21ST ST / RIDGEVIEW DR	0	0	SS	0
SS	886	E	S 21ST ST / CEDAR RIDGE DR	0	0	SS	0
SS	887	N	TONGANOSSIE DR / CANDLEWOOD DR	SS	0	0	0
SS	888	S	TONGANOSSIE DR / SUMMIT DR	0	SS	0	0
SS	889	N	TONGANOSSIE DR / GATEWOOD ST	SS	0	0	0
SS	890	E	GATEWOOD ST / TUDOR DR	0	0	SS	0
SS	891	W	TUDOR DR / CANDLEWOOD DR	0	0	0	SS
SS	892	SW	WINCHESTER DR / CANDLEWOOD DR	0	0	SS	SS
SS	892	NE	WINCHESTER DR / CANDLEWOOD DR	0	0	SS	SS
SS	894	W	REMINGTON LN / CANDLEWOOD DR	0	0	0	SS
SS	895	N	REMINGTON LN / REMINGTON CT	SS	0	0	0
SS	896	E	REMINGTON LN / WINCHESTER DR	0	0	SS	0
SS	898	W	S 14TH ST / INDEPENDENCE CT	0	0	SS	SS
SS	898	E	S 14TH ST / INDEPENDENCE CT	0	0	SS	SS
SS	899	W	S 14TH ST / REVOLUTIONARY CT	0	0	0	SS
SS	900	SB	MILITIA CT / REVOLUTIONARY CT	0	SS	0	0
SS	901	W	NEW LAWRENCE RD / TANGLEWOOD ST	0	0	SS	SS
SS	901	E	NEW LAWRENCE RD / TANGLEWOOD ST	0	0	SS	SS
SS	902	E	GRAND AVE / TANGLEWOOD ST	0	0	SS	0
SS	903	E	10TH AVE / MEADOW LN	0	0	SS	0
SS	904	W	MEADOW RD / MEADOW LN	0	0	0	SS

2019 Intersection Traffic Control Device Master Index
Adopted by Ordinance No. 8110

Traffic Control Device	Intersection No.	Direction of Traffic Controlled	Intersection Name	NB	SB	EB	WB
SS	906	E	GRAND AVE / WILDWOOD ST	0	0	SS	0
SS	907	W	NEW LAWRENCE RD / WILDWOOD ST	0	0	SS	SS
SS	907	E	NEW LAWRENCE RD / WILDWOOD ST	0	0	SS	SS
SS	908	N	WILDWOOD ST / FOXHILL ST	SS	0	0	0
TL	909	2W	10TH AVE / GATEWOOD ST	TL	TL	TL	TL
TL	909	2N	10TH AVE / GATEWOOD ST	TL	TL	TL	TL
TL	909	2E	10TH AVE / GATEWOOD ST	TL	TL	TL	TL
TL	909	2S	10TH AVE / GATEWOOD ST	TL	TL	TL	TL
SS	910	W	NEW LAWRENCE RD / GATEWOOD ST	0	0	0	SS
SS	911	S	S 14TH ST / NEW LAWRENCE RD	0	SS	0	0
SS	912	W	S 20TH ST / NEW LAWRENCE RD	0	0	0	SS
SS	913	W	10TH AVE / JOSELA CT	0	0	0	SS
SS	914	E	10TH AVE / WELLINGTON DR	0	0	SS	0
SS	916	N	WELLINGTON DR / GRAND AVE	SS	0	0	0
Y	917	E	WELLINGTON DR / NEWMAN ST	0	0	Y	0
SS	920	S	GRAND AVE / WALLIS LN	SS	SS	0	0
SS	920	N	GRAND AVE / WALLIS LN	SS	SS	0	0
SS	922	E	IRONWOOD DR / TAMARISK DR	0	0	SS	0
SS	923	E	IRONWOOD DR / IRONWOOD CT	0	0	SS	0
SS	924	N	WALLIS LN / IRONWOOD DR	SS	0	0	0
SS	926	E	10TH AVE / FOREST HILLS LN	0	0	SS	0
SS	927	E	10TH AVE / WALLIS LN	0	0	SS	0
SS	928	W	10TH AVE / MUNCIE RD	0	0	0	SS
SS	929	W	10TH AVE / PARK AVE	0	0	0	SS
SS	930	W	10TH AVE / LEWIS DR	0	0	0	SS
TL	931	3W	10TH AVE / EISENHOWER RD	TL	TL	TL	TL
TL	931	2N	10TH AVE / EISENHOWER RD	TL	TL	TL	TL
TL	931	3E	10TH AVE / EISENHOWER RD	TL	TL	TL	TL
TL	931	3S	10TH AVE / EISENHOWER RD	TL	TL	TL	TL
SS	932	S	S 13TH ST / EISENHOWER RD	0	SS	0	0
SS	933	S	S 20TH ST / EISENHOWER RD	SS	SS	0	0
SS	933	N	S 20TH ST / EISENHOWER RD	SS	SS	0	0
SS	934	S	BRANCHES WAY / EISENHOWER RD	0	SS	0	0
SS	935	SB	BIRCH ST / EISENHOWER RD	0	SS	0	0
SS	936	NB	BIRCH ST / COTTONWOOD ST	SS	SS	0	0
SS	936	SB	BIRCH ST / COTTONWOOD ST	SS	SS	0	0
SS	937	S	COTTONWOOD ST / ALDER ST	0	SS	0	0
SS	938	N	BRANCHES WAY / S 22ND ST	SS	0	0	0
SS	939	E	S 22ND ST / S 22ND ST (S)	0	0	SS	0
SS	941	E	S 22ND ST / ALDER ST	0	0	SS	0
SS	942	EB	S 22ND ST / BIRCH ST	0	0	0	Y
Y	945	S	SPRING GARDEN RD / MEADOW LN	0	Y	0	0
SS	946	S	GARLAND ST / MEADOW LN	0	SS	0	0
SS	958	E	MAPLE AVE / GODDARD CIR	0	0	SS	0
SS	959	E	SHRINE PARK RD / VIRGINIA CIR	0	0	SS	0

2019 Intersection Traffic Control Device Master Index
Adopted by Ordinance No. 8110

Traffic Control Device	Intersection No.	Direction of Traffic Controlled	Intersection Name	NB	SB	EB	WB
SS	960	E	SHRINE PARK RD / SILVERLEAF	0	0	SS	0
SS	961	E	SHRINE PARK RD / GREENS RIDGE	0	0	SS	0
SS	963	W	10TH AVE / BROOKSIDE ST	0	0	0	SS
SS	970	W	SHRINE PARK RD / MCDONALD RD	0	0	0	SS
SS	971	W	SHRINE PARK RD/VALLEY VIEW RD (N)	0	0	0	SS
SS	972	E	SHRINE PARK RD / FAWN CREEK ST	0	0	SS	0
SS	973	E	SHRINE PARK RD / DEERFIELD ST	0	0	SS	0
SS	975	W	GARLAND ST / DEERFIELD ST	0	0	0	SS
SS	978	S	VILLAGE ST / GARLAND ST	0	SS	0	0
SS	981	S	MUNCIE RD / PARKWAY DR	SS	SS	0	0
SS	981	N	MUNCIE RD / PARKWAY DR	SS	SS	0	0
SS	985	E	PARK AVE / PARK LN	0	0	SS	SS
SS	985	E	MAPLE AVE/GODDARD CIR	0	0	SS	0
SS	986	W	PARK LN / HIGHLAND DR	0	0	0	SS
SS	987	S	MUNCIE RD / MUNCIE CT	SS	SS	0	0
SS	987	N	MUNCIE RD / MUNCIE CT	SS	SS	0	0
SS	988	SB	GARLAND ST / MUNCIE RD	0	SS	0	0
SS	989	SB	BROADWAY TERR / MUNCIE RD	0	SS	0	0
SS	991	W	HIGHLAND DR / EDGEHILL ST	0	0	SS	SS
SS	991	E	HIGHLAND DR / EDGEHILL ST	0	0	SS	SS
SS	993	E	PARK AVE / EDGEHILL ST	0	0	SS	0
SS	994	E	GLENVIEW ST / EDEHILL ST	0	0	SS	0
SS	995	W	PARK LN / GLENVIEW ST	0	0	0	SS
SS	996	W	HIGHLAND TERR / PARK LN	0	0	0	SS
SS	997	N	HIGHLAND TERR / GARLAND ST	SS	0	0	0
SS	998	N	HIGHLAND TERR /BROADWAY TERR	SS	0	0	0
SS	999	E	HIGHLAND TERR / EDGEHILL ST	0	0	SS	0
SS	1000	S	LEWIS DR / PARKWAY DR	0	SS	0	0
SS	1002	W	SHRINE PARK RD / MUNCIE RD	0	0	SS	SS
SS	1002	E	SHRINE PARK RD / MUNCIE RD	0	0	SS	SS
SS	1003	W	SHRINE PARK RD / VALLEY VIEW RD (S)	0	0	0	SS
SS	1005	W	SHRINE PARK RD / SUMMIT RD (N)	0	0	0	SS
SS	1005	W	SHRINE PARK RD / SUMMIT RD (N)	0	0	0	SS
TL	1007	3W	SHRINE PARK RD / EISENHOWER RD	TL	TL	TL	TL
TL	1007	2N	SHRINE PARK RD / EISENHOWER RD	TL	TL	TL	TL
TL	1007	3E	SHRINE PARK RD / EISENHOWER RD	TL	TL	TL	TL
TL	1007	2S	SHRINE PARK RD / EISENHOWER RD	TL	TL	TL	TL
SS	1008	S	EISENHOWER RD / LAKEVIEW DR	0	SS	0	0
SS	1009	S	EISENHOWER RD / HUGHES RD	0	SS	0	0
TL	1010	1W 1N	S 4TH ST / EISENHOWER RD	TL	TL	TL	TL
TL	1010	2N 1E	S 4TH ST / EISENHOWER RD	TL	TL	TL	TL
TL	1010	1 S 1 E	S 4TH ST / EISENHOWER RD	TL	TL	TL	TL
TL	1010	3S	S 4TH ST / EISENHOWER RD	TL	TL	TL	TL
SS	1011	EB	BREWER PL / COMMERCIAL ST	0	0	SS	0
SS	1012	WB	BREWER PL / HIGHWAY TER	0	0	0	SS

2019 Intersection Traffic Control Device Master Index
Adopted by Ordinance No. 8110

Traffic Control Device	Intersection No.	Direction of Traffic Controlled	Intersection Name	NB	SB	EB	WB
SS	1013	N	MUNCIE RD / BREWER PL	SS	0	0	0
SS	1014	S	COMMERCIAL ST / COMMERCIAL PL	0	SS	0	0
SS	1015	N	MUNCIE RD / COMMERCIAL PL	SS	0	0	0
TL	1016	2W	S 4TH ST / MUNCIE RD	TL	TL	TL	TL
TL	1016	3N	S 4TH ST / MUNCIE RD	TL	TL	TL	TL
TL	1016	2E	S 4TH ST / MUNCIE RD	TL	TL	TL	TL
TL	1016	3S	S 4TH ST / MUNCIE RD	TL	TL	TL	TL
SS	1017	E	S 4TH ST / MUNCIE TERR	0	0	SS	0
SS	1018	W	S 4TH ST / COMMERCIAL ST	0	0	0	SS
SS	1019	W	MUNCIE RD / HUGHES RD	0	0	SS	SS
SS	1019	E	MUNCIE RD / HUGHES RD	0	0	SS	SS
SS	1020	E	HUGHES RD / PLEASANT AVE	0	0	SS	0
SS	1021	S	PLEASANT AVE / IOWA ST	SS	SS	0	0
SS	1021	N	PLEASANT AVE / IOWA ST	SS	SS	0	0
SS	1022	W	IOWA ST / NIPPER LN	0	0	SS	SS
SS	1022	E	IOWA ST / NIPPER LN	0	0	SS	SS
SS	1023	E	HUGHES RD / MCDONALD RD	0	0	SS	0
SS	1025	N	MCDONALD RD / IOWA ST	SS	0	0	0
SS	1026	S	LAKEVIEW DR / MCDONALD RD	SS	SS	0	0
SS	1026	N	LAKEVIEW DR / MCDONALD RD	SS	SS	0	0
SS	1027	W	LAKEVIEW DR / PLEASANT AVE	0	0	0	SS
SS	1028	S	LAKEVIEW DR / MUNCIE RD	SS	SS	0	0
SS	1028	N	LAKEVIEW DR / MUNCIE RD	SS	SS	0	0
SS	1029	W	LAKEVIEW DR/ CEDAR CT	0	0	0	SS
SS	1030	E	LAKEVIEW DR / OREGON ST	0	0	SS	0
SS	1034	W	HUGHES RD / ST JOHN HOSPITAL	0	0	0	SS
SS	1035	E	HUGHES RD / CEDAR CT	0	0	SS	0
SS	1036	E	HUGHES RD / OREGON ST	0	0	SS	0
SS	1037	W	HUGHES RD / LV PLAZA	0	0	0	SS
SS	1038	E	HUGHES RD / IDAHO ST	0	0	SS	0
SS	1042	E	HUGHES RD / UTAH ST	0	0	SS	0
SS	1046	W	S 4TH ST / MONTANA CT	0	0	0	SS
SS	1047	S	IDAHO ST / FRONTAGE RD	SS	SS	0	0
SS	1047	N	IDAHO ST / FRONTAGE RD	SS	SS	0	0
TL	1048	2W	S 4TH ST / IDAHO ST	TL	TL	TL	TL
TL	1048	3N	S 4TH ST / IDAHO ST	TL	TL	TL	TL
TL	1048	2E	S 4TH ST / IDAHO ST	TL	TL	TL	TL
TL	1048	3S 1W	S 4TH ST / IDAHO ST	TL	TL	TL	TL
SS	1049	W	MLK DR (S) / MLK DR (E)	0	0	0	SS
SS	1050	N	MLK DR / RALPH BUNCE DR (W)	SS	0	0	0
SS	1053	W	MLK DR / RALPH BUNCE DR (E)	0	0	0	SS
SS	1054	E	WILSON AVE / ASH ST	0	0	SS	0
SS	1055	W	FRONTAGE RD / ASH ST	0	0	0	SS
SS	1058	E	FRONTAGE RD / OREGON ST (S)	0	0	SS	0
SS	1059	W	FRONTAGE RD / OREGON ST (N)	0	0	SS	SS

2019 Intersection Traffic Control Device Master Index
Adopted by Ordinance No. 8110


Traffic Control Device	Intersection No.	Direction of Traffic Controlled	Intersection Name	NB	SB	EB	WB
SS	1060	W	S 4TH ST / OREGON ST (N)	0	0	0	SS
SS	1062	E	S 4TH ST / ST JOHN HOSPITAL	0	0	SS	0
SS	1063	E	S 4TH ST / UNIVERSITY OF ST MARY DR	0	0	SS	0
Y	1065	N	S 4TH ST / VA ENTRANCE ON RAMP	Y	0	0	0
SS	1066	W	S 4TH ST / VA ENTRANCE	0	0	0	SS
SS	1068	E	S 4TH ST / SISTERS OF CHARITY DR	0	0	SS	0
SS	1471	S	MUNCIE RD / S VA ENTRANCE DR	0	SS	0	0
SS	1472	S	MUNCIE RD / VA CEMETARY ENTRANCE	0	SS	0	0
SS	1473	E	S 22ND ST / CO RD 12	0	0	SS	0
SS	1479	S	S 14TH ST / EISENHOWER RD	0	SS	0	0
SS	1480	NB	WEST GLEN ST / NEW LAWRENCE RD	SS	0	0	0
SS	1481	WB	NEW LAWRENCE DR / SUNSET ST	0	0	0	SS
SS	1482	NB	TALLGRASS ST / WEST GLEN DR	SS	0	0	0
SS	1483	NB	SHADOW DR / SUNRISE ST	SS	SS	0	0
SS	1483	SB	SHADOW DR / SUNRISE ST	SS	SS	0	0
TL	3076	2N	FIRE STATION #2	TL	0	0	0
TL	3076	2W	FIRE STATION #2	TL	0	0	0
TL	3077	2N	FIRE STATION #3	TL	0	0	0
TL	3077	2S	FIRE STATION #3	TL	0	0	0
TL	3079	2S	FIRE STATION 1	TL	TL	TL	0
TL	3079	2WB	FIRE STATION 1	TL	TL	TL	0
TL	3079	2NB	FIRE STATION 1	TL	TL	TL	0

POLICY REPORT
SECOND CONSIDERATION ORDINANCE 8111
ASSESSING THE COSTS OF DEMOLITIONS
AS SPECIAL ASSESSMENTS

AUGUST 27, 2019



Carla K. Williamson, CMC
City Clerk



Paul Kramer
City Manager

BACKGROUND:

At the August 13, 2019 City Commission meeting the City Commission reviewed and placed on first consideration:

AN ORDINANCE LEVYING AND ASSESSING SPECIAL ASSESSMENTS FOR CERTAIN LOTS, PIECES AND TRACTS OF LAND IN THE CITY OF LEAVENWORTH, LEAVENWORTH COUNTY, KANSAS, FOR THE PURPOSE OF PAYING THE COSTS OF DEMOLITION AND PRESCRIBING FOR PAYMENT AND COLLECTION OF SAID ASSESSMENTS.

There have been no changes since first consideration.

Ordinance No. 8111 is now presented for second consideration and requires a roll call vote.

ATTACHMENTS:

- Ordinance No. 8111

(Published in the Leavenworth Times on August 30, 2019)

ORDINANCE 8111

AN ORDINANCE LEVYING AND ASSESSING SPECIAL ASSESSMENTS FOR CERTAIN LOTS, PIECES AND TRACTS OF LAND IN THE CITY OF LEAVENWORTH, LEAVENWORTH COUNTY, KANSAS, FOR THE PURPOSE OF PAYING THE COSTS OF DEMOLITION AND PRESCRIBING FOR PAYMENT AND COLLECTION OF SAID ASSESSMENTS.

WHEREAS, by due and legal proceedings heretofore carried into effect by the City of Leavenworth, Kansas, certain unsafe structures have been abated, and

WHEREAS, several lots pieces, parcels and tracts of land hereinafter set forth are legally liable to pay the costs or proportionate costs hereof as provided by the Code of the City of Leavenworth, Kansas, and

WHEREAS, the cost of such abatement has been ascertained as provided by law and fixed and distributed and apportioned as in this ordinance set forth.

NOW, THEREFORE, BE IT ORDAINED BY THE GOVERNING BODY OF THE CITY OF LEAVENWORTH, KANSAS:

Section 1. That for the purpose of paying the costs to demolish unsafe structures in the City of Leavenworth, Kansas, there shall be and hereby is apportioned to be levied and assessed on and against certain lots, pieces, parcels and tracts of land liable; therefore, special assessments hereinafter set out in such amounts, as are set out as follows:

Property Owner	Street Address	Legal Address	Demolition Costs
Newton, Betty L	322 Pottawatomie St	Lot 12, Block 39, Leavenworth City Proper, in the City of Leavenworth, Leavenworth County, Kansas	\$10,016.00
Taylor, Stacie M & Garner, Theogan E	306 Kickapoo St	Lots 3, 4 and 5, in Block 37, Leavenworth City Proper, in the City of Leavenworth, Leavenworth County, Kansas	\$6,724.00
Collins,Ralph (DEC'D); Gorden,Betty; Anderson, Velma; Route, Brenda; Tolbert, Joyce	1529 10th Ave	Lots 13, 14 and 15, Wollman's Subdivision of the West half of Block 4, Marshall's Subdivision, City of Leavenworth, Leavenworth County, Kansas	\$6,795.00
Stephenson, Frank	325 Pottawatomie St	Lot 20, Block 40, Leavenworth City Proper, City of Leavenworth, in Leavenworth County, Kansas	\$11,995.00

Property Owner	Street Address	Legal Address	Demolition Costs
Curtis W. Cammack (Dec'd)	617 Middle St	Lot 6 and 7, Block 15, Day's Subdivision, City of Leavenworth, Leavenworth County, Kansas	\$8,795.00
Donald, Phelps M. and Rose M. & Donald, Patricia A. & Dill, Virginia L.	1118 Kenton St	Lots 16, 17 and 18, in Block 2, Stillings Subdivision of the City of Leavenworth, Leavenworth County, Kansas	\$10,900.00
Elliott, Bradley	784 Miami St	Lot 18, Block 114, Western Addition, City of Leavenworth, Leavenworth County, Kansas; ALSO a part of Lot 17, Block 114, Western Addition, City of Leavenworth, Leavenworth County, Kansas, described as follows: Commencing at the Southwest corner of the West line of Lot 17, Block 114; thence North along the West line of Lot 17, 40.00 feet to the point of beginning of this parcel, thence East 2.40 feet; thence South 37.00 feet parallel to the West line of Lot 17, thence West 2.40 feet to the point of beginning, as per survey dated December 29, 1986 by Donald G. White	\$1,755.00
Hudspeth, Chadwick G.	625 Oak St	Lot 7, Block 33, Clark and Rees' Addition, City of Leavenworth, Leavenworth County, Kansas	\$10,600.00
Richmond, Lance W. & Sullivan, Tessa A.	1517 9th Ave	The North 40 feet of the South 180 feet of Block One, Marshall's Subdivision, City of Leavenworth, Leavenworth County, Kansas	\$12,000.00
Gabriel Arroyo	403 Olive St	Lot 2, Block 20, Clark and Rees Addition, a subdivision in the City of Leavenworth	\$15,068.00
Total			\$94,648.00

Section 2. Such amounts so levied and assessed are set forth in Section 1 of this ordinance, shall be due and payable from and after publication of this ordinance, and the City Clerk shall certify same to the County Clerk for collection as other special assessments are collected and such amounts so certified shall be placed on the tax rolls and collected as special assessments.

Section 3. This Ordinance shall take effect and be in force from and after its passage, approval, and publication in the official city newspaper.

PASSED and APPROVED by the Governing Body on this 27th day of August 2019.

 Jermaine Wilson, Mayor

{SEAL}

ATTEST:

 Carla K. Williamson CMC, City Clerk

**POLICY REPORT
SECOND CONSIDERATION ORDINANCE 8112
ASSESSING THE COSTS OF ABATEMENT OF NUISANCES
AS SPECIAL ASSESSMENTS**

AUGUST 27, 2019



Carla K. Williamson, CMC
City Clerk



Paul Kramer
City Manager

BACKGROUND:

At the August 13, 2019 City Commission meeting the City Commission reviewed and placed on first consideration:

AN ORDINANCE LEVYING AND ASSESSING SPECIAL ASSESSMENTS FOR CERTAIN LOTS, PIECES AND TRACTS OF LAND IN THE CITY OF LEAVENWORTH, LEAVENWORTH COUNTY, KANSAS, FOR THE PURPOSE OF PAYING THE COSTS OF ABATEMENT OF NUISANCES AND PRESCRIBING FOR PAYMENT AND COLLECTION OF SAID ASSESSMENTS.

Any payments made since first consideration will be removed from the attachment and an update provided to the City Commission.

Ordinance No. 8112 is now presented for second consideration and requires a roll call vote.

ATTACHMENTS:

- Ordinance No. 8112

(Published in the Leavenworth Times on August 30, 2019)

ORDINANCE 8112

AN ORDINANCE LEVYING AND ASSESSING SPECIAL ASSESSMENTS FOR CERTAIN LOTS, PIECES AND TRACTS OF LAND IN THE CITY OF LEAVENWORTH, LEAVENWORTH COUNTY, KANSAS, FOR THE PURPOSE OF PAYING THE COSTS OF ABATEMENT OF NUISANCES AND PRESCRIBING FOR PAYMENT AND COLLECTION OF SAID ASSESSMENTS.

WHEREAS, by due and legal proceedings heretofore carried into effect by the City of Leavenworth, Kansas, certain nuisances have been abated, and

WHEREAS, several lots pieces, parcels and tracts of land hereinafter set forth are legally liable to pay the costs or proportionate costs hereof as provided by the Code of the City of Leavenworth, Kansas, and

WHEREAS, the cost of such abatement has been ascertained as provided by law and fixed and distributed and apportioned as in this ordinance set forth.

NOW, THEREFORE, BE IT ORDAINED BY THE GOVERNING BODY OF THE CITY OF LEAVENWORTH, KANSAS:

Section 1. That for the purpose of paying the costs of abatement of nuisances in the City of Leavenworth, Kansas, there shall be and hereby is apportioned to be levied and assessed on and against several lots, pieces, parcels and tracts of land liable; therefore, special assessments hereinafter set out in such amounts, as are set out as follows:

ATTACHED GRASS AND WEEDS NUISANCE ASSESSMENTS – EXHIBIT A

Section 2. Such amounts so levied and assessed are set forth in Section 1 of this ordinance, shall be due and payable from and after publication of this ordinance, and the City Clerk shall certify same to the County Clerk for collection as other special assessments are collected and such amounts so certified shall be placed on the tax rolls and collected as special assessments.

Section 3. This Ordinance shall take effect and be in force from and after its passage, approval, and publication in the official city newspaper.

PASSED and APPROVED by the Governing Body on this 27th day of August 2019.

Jermaine Wilson, Mayor

{SEAL}

ATTEST:

Carla K. Williamson CMC, City Clerk

ATTACHMENT A

Ordinance No. _____

Property Owner Name	Property Address	CAMA	Legal Description	Billed Amount
ALSPAUGH, JAMES D	109 ALLEN STREET	0782704011028000	ALLEN & STREET'S ADDITION, BLOCK 1, PT BLK 1;BEG 167'N OF SE COR BLK 1,W185'(S),N96',E181.5', S96' TO POB (SCALED)	\$323.00
LIS,KEVIN C & PATRICIA A	1605 TERRY STREET	0782704011012000	AMRON ACRES, Lot 10	\$126.00
STANDIFER, BIANCIA	222 DAKOTA STREET	0772502008006000	BRIDGEPORT SUBDIVISION, S25, T08, R22E, BLOCK 2, Lot 18	\$134.26
ASHBY, ANSON & JENNIFER	1420 SHAWNEE STREET	0782704014010000	BRUNS SUBDIVISION, S27, T08, R22E, BLOCK 77, Lot 10 - 11	\$259.73
SUMMITCORP SERVICES INC	857 Walnut	0773501024003000	CENTRAL SUBDIVISION, BLOCK 11, W10' LT 13 & ALL LTS 14-15	\$1,100.00
WESLEY, MONTARIAL A & LAKISHA	213 SOUTH 10TH STREET	0773502010005000	CENTRAL SUBDIVISION, BLOCK 15, Lot 26 Total	\$2,439.52
DUCKWORTH, HARLAN J & HOOTEN, SHARLEE S	1002 CHEROKEE STREET	0773502009016000	CENTRAL SUBDIVISION, BLOCK 26, E38'LTS 1-4 Total	\$646.46
H&P DEVELOPMENT LLC	1131 METROPOLITAN	0772602004009000	CENTRAL SUBDIVISION, BLOCK 35, Lot 14 - 18, (SCALED) Total	\$404.28
JULIAN, BART LANE & JULIAN, CONNER	401 SOUTH 14TH STREET	0773502019001000	CENTRAL SUBDIVISION, BLOCK 50, ACRES 1.25, W140'(S) BLK 50 & S1/2 VAC WEST CHOCTAW ST ADJ Total	\$130.00
FITZGERALD, AUTUMN J	850 CHEROKEE STREET	0773501007007000	CENTRAL SUBDIVISION, S147'BLK 2 E OF ALLEY (SCALED) Total	\$138.14
NEXIA HOLDINGS, INC	431 NORTH 12TH STREET	0772603016001000	CENTRAL SUBDIVISION, S26, T08, R22E, BLOCK 88, TR BLK 88 CENTRAL SUB; BEG INTER POTTAWATOMIE ST & 12TH ST; S27', W115', NWLY37.3', E143' TO POB & ABAN RR ROW ADJ Total	\$394.96
WACKER, THOMAS E	854 SHERMAN AVENUE	0773501014002000	CENTRAL SUBDIVISION, S35, T08, R22E, BLOCK 13, PT BLK 13;BEG W69' FROM NE COR SE60'(S), SW43', NW75' (S), E28' TO POB (SCALED) Total	\$2,652.79
DOWLING, BRYAN D	603 OLIVE STREET	0773602042002000	CLARK & REES ADDITION , BLOCK 30 , Lot 2. Total	\$200.00
ARROYO, GABRIEL	403 OLIVE STREET	0773602044002000	CLARK & REES ADDITION, BLOCK 20, Lot 2 Total	\$1,700.00
WELLS FARGO BANK NA	521 WALNUT STREET	0773602026004000	CLARK & REES ADDITION, BLOCK 26, Lot 6 Total	\$122.38
HUDSPETH, CHADWICK G	625 OAK STREET	0773602022006000	CLARK & REES ADDITION, BLOCK 33, Lot 7 Total	\$2,643.22
WATT, BRUCE D	212 OLIVE STREET	0773602034008010	CLARK & REES ADDITION, S36, T08, R22E, BLOCK 9, Lot 12 - 13 Total	\$6,500.00
CARLYSLE, BETTY & BILLY	934 OTTAWA STREET	0772603105008000	COCHRAN & MULLIGAN'S SUB , BLOCK 14 , LT 39 COCHRAN & MULLIGAN'S SUB & LT 29 EWING,ROELOFSON & CO SUB (SCALED). Total	\$2,040.44
SMITH, AMY R	926 POTTAWATOMIE STREET	0772603108007000	COCHRAN & MULLIGAN'S SUB , BLOCK 24 , Lot 38 - 39 Total	\$1,040.50
FELIX, ELIJAH WILLIAM G & FELIX, DESI R	817 OTTAWA STREET	0772604211006000	COCHRAN & MULLIGAN'S SUB, S26, T08, R22E, BLOCK 23, Lot 14 - 15 Total	\$905.77
JULIAN, BART LANE & JULIAN, CONNER	501 14TH STREET	0773502028001000	DASSLERS SUBDIVISION, BLOCK 49, 9-13 & N10' VAC ALLY ADJ Total	\$130.00
TALKINGTON, ADAM S & BRIGIT	613 MIDDLE STREET	0773603024004000	DAY'S SUBDIVISION, BLOCK 15, W40'LT 5 Total	\$117.54
SANTEE, DAVID ROY	615 PROSPECT STREET	0773603039004000	DAY'S SUBDIVISION, BLOCK 18, W1/2 LT 6 & ALL LT 7 Total	\$2,255.96
CAMMACK, CURTIS W	617 MIDDLE STREET	0773603024005000	DAY'S SUBDIVISION, S36, T08, R22E, BLOCK 15, Lot 6 - 7 Total	\$2,175.61
DAVIS, TERRY	717 MIAMI STREET	0772604405005000	E5.333'LT 22 & ALL LT 23 & W18.667'LT 24 Total	\$124.29
HIATT, DONALD L	611 NORTH 8TH STREET	0772604208025000	EWING, ROELOFSON & CO. , BLOCK 13 , LTS 5 & 6 & S28.5'LT 7 Total	\$3,193.97
NANNEN, STEVEN F	714 NORTH 11TH STREET	0772603103005000	EWING, ROELOFSON & CO. , BLOCK 6 , Lot 20 - 22. Total	\$434.00
SECRETARY OF VETERAN'S AFFAIRS	816 KICKAPOO STREET	0772604205019000	EWING, ROELOFSON & CO., BLOCK 12, Lot 35 Total	\$115.64
SALYERS, VICTORIA A	1117 POTTAWATOMIE	0772603015003000	EWING, ROELOFSON & CO., BLOCK 8, Lot 12 Total	\$114.78

ATTACHMENT A

Ordinance No. _____

Property Owner Name	Property Address	CAMA	Legal Description	Billed Amount
MATHIS, REGINA D	430 NORTH 12TH STREET	0772603015007000	EWING, ROELOFSON & CO., BLOCK 8, LTS 20-21 & N1/2 LT 22 Total	\$134.15
THE ZENITH SHOP	829 KICKAPOO STREET	0772604208009000	EWING, ROELOFSON & CO., S26, T08, R22E, BLOCK 13, LT 19 LESS TR BEG NE COR S63', W8.4', NE63', E1.2' TO POB Total	\$3,009.43
CAMPBELL, MISTY D	917 KICKAPOO STREET	0772604209004000	EWING, ROELOFSON & CO., S26, T08, R22E, BLOCK 14, Lot 13 - 14. Total	\$522.38
R & M INVESTMENT GROUP LLC	500 ELM STREET	0773603026009000	FAKCLERS ADDITION, BLOCK 28, Lot 13 - 16 Total	\$2,850.00
VISOCSKY, BRIAN K & JULIA ROSE	505 ELM STREET	0773603031002000	FAKCLERS ADDITION, BLOCK 29, Lot 3 Total	\$122.29
NANNEN, STEVEN F	1354 PAWNEE STREET	0782701008011000	FENN'S FAIRGROUND SUB, BLOCK 6, Lot 12 - 14 Total	\$127.00
BALLOU, TERRY D	1351 PAWNEE STREET	0782701009004000	FENN'S FAIRGROUND SUB, S27, T08, R22E, BLOCK 4, Lot 30 - 31 Total	\$123.00
H&P DEVELOPMENT LLC	800 NORTH 17TH STREET	0782704005001000	FOWLER'S ADDITION, Lot 4, ACRES 2.21 Total	\$850.00
PAYNE-HOWARD, LULA MAE	1720 SHAWNEE STREET	0782704018011000	GIST SURVEY , PT GIST SURVEY IN SE1/4;BEG 231'E & 30'N SW COR SE1/4, N110',E100',S110',W100'TO POB. Total	\$143.00
HOME SFR BORROWER LLC	1520 OSAGE STREET	0782704007026000	GIST SURVEY, PT GIST SURVEY IN SE1/4; BEG 480.3'E INTER E LI 17TH ST & N LI OSAGE ST,N140',E64',S140', W64' TO POB Total	\$136.60
H&P DEVELOPMENT LLC	1131 METROPOLITAN AVENUE	0772602004009000	GIST SURVEY, S26, T08, R22E, PT GIST SURVEY IN NW1/4;BEG SE COR INTER METRO AVE & 12TH ST, E50.1', S154.1', W50', N152' TO POB Total	\$1,993.15
HOPSON, DAVID R	2315 4TH AVENUE	1010103007006000	GREENAMYRE'S ADD, BLOCK 2, S52.19' LT 3 Total	\$1,600.00
THOMPSON, WILLIAM L	1107 NORTH 10TH STREET	0772602003014000	HANNON'S ADDITION, BLOCK 4, Lot 3 - 5 Total	\$1,253.47
LIS, KEVIN	2605 FOLSOM STREET	1020304009006000	HATTOCK'S MEADOW, S03, T08, R21E, Lot 12 Total	\$129.51
FRESH AIR FOUNDATION	2227 2ND AVENUE	1010103009006000	JOHNSON'S SUBDIVISION, PT BLK 15 JOHNSONS SUB & PT BLK 6 BYINGTONS SUB,BEG SW COR BLK 15 JOHNSONS SUB,N60',E125' S60',W125' TO POB Total	\$313.30
GENESIS ONE LLC	729 CHESTNUT STREET	0773501030002000	LATTA'S ADDITION, BLOCK 27, Lot 3 Total	\$259.03
SWEENEY 2 LLC	520 PAWNEE STREET	0772601406013000	LEAVENWORTH,PLT ORIG , BLOCK 60 , Lot 11 Total	\$1,904.28
JAMES F THOMPSON	615 OTTAWA STREET	0772604108006000	LEAVENWORTH,PLT ORIG, BLOCK 80, Lot 25 Total	\$159.17
BANK OF NEW YORK MELLON	625 KIOWA STREET	0772604103011000	LEAVENWORTH,PLT ORIG, BLOCK 93, Lot 20 Total	\$956.59
ALEXANDER, JUSTINE	116 OTTAWA STREET	0772503101005000	LEAVENWORTH,PLT ORIG, S25, T08, R22E, BLOCK 12, Lot 17 - 19 Total	\$3,086.85
2019 CASTLE LLC	112 OTTAWA STREET	0772503101006000	LEAVENWORTH,PLT ORIG, S25, T08, R22E, BLOCK 12, Lot 20 Total	\$372.42
PALLESEN, RANDALL D	113 SENECA STREET	0772503405002000	LEAVENWORTH,PLT ORIG, S25, T08, R22E, BLOCK 17, Lot 13 Total	\$2,179.53
PALLESEN, RANDALL D	119 SENECA STREET	0772503405004000	LEAVENWORTH,PLT ORIG, S25, T08, R22E, BLOCK 17, Lot 15 - 16 Total	\$2,504.92
MEDARIS, CATHY ANN	201 OSAGE STREET	0772503107001000	LEAVENWORTH,PLT ORIG, S25, T08, R22E, BLOCK 26, Lot 32. Total	\$886.34
KELLY, WILLIAM J	717 NORTH 2ND STREET	0772502021001000	LEAVENWORTH,PLT ORIG, S25, T08, R22E, BLOCK 30, N75'LTS 30-32 Total	\$513.52
VON MORRISON, DIRK C & MARY E	307 OTTAWA STREET	0772503207003000	LEAVENWORTH,PLT ORIG, S25, T08, R22E, BLOCK 39, Lot 29 Total	\$521.00
MULLINS, BRIAN ALAN	317 POTTAWATOMIE	0772503212005000	LEAVENWORTH,PLT ORIG, S25, T08, R22E, BLOCK 40, E1/2 LT 25 & ALL LT 26 Total	\$1,939.87
OLD CANAL FINANCIAL	323 OSAGE STREET	0772503213008000	LEAVENWORTH,PLT ORIG, S25, T08, R22E, BLOCK 41, Lot 21 Total	\$2,920.46
INVERSE ASSET FUND LLC	420 OTTAWA STREET	0772503205013000	LEAVENWORTH,PLT ORIG, S25, T08, R22E, BLOCK 55, Lot 11 Total	\$2,363.84
CARLYSLE, WILLIAM	404 OTTAWA STREET	0772503205021000	LEAVENWORTH,PLT ORIG, S25, T08, R22E, BLOCK 55, Lot 3. Total	\$108.49
ARENAS, FEDERICO & CLAUDIA	515 OTTAWA STREET	0772503209005000	LEAVENWORTH,PLT ORIG, S25, T08, R22E, BLOCK 65, Lot 26. Total	\$109.30

ATTACHMENT A

Ordinance No. _____

Property Owner Name	Property Address	CAMA	Legal Description	Billed Amount
BEHNCKE, ROBERT H & REBECCA Z & RANEY, KEVIN M	510 PAWNEE STREET 108 MARION STREET	0772601406017000 1010104001009000	LEAVENWORTH,PLT ORIG, S26, T08, R22E, BLOCK 60, Lot 5 - 6 Total LT 15 & S1/2 VAC ALLEY ADJ Total	\$124.21 \$120.53
RICHMOND, LANCE WILLIAM & SULLIVAN, TES	1517 9TH AVENUE	1010201004006000	MARSHALL'S SUBDIVISION , BLOCK 1 , N40' OF S180' OF BLK 1 Total	\$796.50
BURBANK, JOSEPH M AILIN, RACHEL RS	932 OSAGE STREET 836 MIAMI STREET	0772603401007000 0772604305014000	MIX'S SUBDIVISION , BLOCK 2 , Lot 16. Total MIX'S SUBDIVISION, BLOCK 4, Lot 22 - 24 Total	\$375.50 \$439.70
LOUGH, MANDI & CHAD A BOKF NA	807 NORTH 12TH STREET 805 SANTA FE STREET	0772603002018000 1010204013001000	MORRIS METRO SUB BL 1-4, BLOCK 1, N1/2 LT 4 & ALL LT 5 Tot NEELY'S FOREST ADDITION , BLOCK 7 , Lot 8. Total	\$225.42 \$500.00
WALLACE, JANICE V & WALLACE, ARDELLA M	840 LIMIT STREET	1010204016008000	NEELY'S FOREST ADDITION, BLOCK 8, Lot 5 Total	\$600.00
WILSON, ROBERT A COPPER TOP LLC	1186 RANDOLPH STREET 603 13TH TERRACE	0773503008003000 0782704004034000	NORTON,WILLIAMS&THOMAS ADD, BLOCK 1, Lot 1 - 2 Total OTTAWA SUBDIVISION, BLOCK 2, Lot 1, (SCALED) Total	\$522.56 \$122.00
BURNS, F ROBERT & ELIZABETH C LONG, KIESIN BLAEC & COURTNEY BROOKE	538 PLEASANT AVENUE 1130 KICKAPOO STREET	1011203001025000 0772603006008000	PLEASANT VIEW SUBDIVISION, Lot 4 Total PT GIST SURVEY IN SW1/4;BEG NE COR INTER KICKAPOO & 12TH ST, N125', E88', S125', W88' TO POB Total	\$303.77 \$144.00
JOHNSON, GEORGE JR KNOX, RICHARD K & ETHEL R	809 NORTH 18TH STREET 812 KICKAPOO STREET	0782703001001000 0772604205020000	QUAIL CREEK, BLOCK 1, Lot 1 Total RAINTREE SUBDIVISION REPLAT, Lot 12 Total	\$135.00 \$123.50
BROWN, FLOSSIE & KING, DELORES KING, CHARLES LEROY & BROWN, FLOSSIE	651 SOUTH STREET 653 SOUTH STREET	1010102019001000 1010102019001010	REES' DONIPHANÞTON'S, BLOCK 14, LT 1 & VAC ALLEY ADJ Total REES' DONIPHANÞTON'S, BLOCK 14, LT2 & VAC ALLEY ADJ Total	\$2,380.09 \$398.96
RAND, STELLA J MC CANN, JULIE A SOUTH HILLSIDE DEVELOPMENT LLC	1818 5TH AVENUE 829 OHIO STREET 2300 WILSON AVENUE	1010102018009000 1010201005012000 1010104006001130	REES' DONIPHANÞTON'S, S01, T08, R22E, BLOCK 13, LT 7 & 8 ;E1/2 VAC 7TH ST ADJ Total ROELAND ADDITION , Lot 11. Total RUTTER'S REPLAT, S01, T09, R22E, Lot 4 Total	\$523.04 \$129.94 \$2,057.31
DODGE, CHARLES K & & JESSIANNA C BUNCH, JAMES R JR HALSTEAD, KENNETH A & AMELIA K	636 LIMIT STREET 1506 SHAWNEE STREET 1305 6TH AVENUE	1010103017005000 0782704016010000 0773504026004000	S01, T09, R22E, ACRES 2.2, PT SW1/4 SW1/4 BEG N R/W LI LIMIT ST 170' E SW COR SW1/4 SW1/4, E223', N360'(S) TO SLY AT&SF R RR/W, NWLY ALG AT&SF RR R/W W 140'(S), W100'(S), S432 TO POB & ABAN RR ROW ADJ (SCALED) Total SHAWNEE HEIGHTS , BLOCK 3 , Lot 18. Total SHOYER PLACE, S35, T08, R22E, Lot 1 - 2 Total	\$519.50 \$128.00 \$130.68
OAKS RESIDENCES LLC PRATER, JAMES D & B U	3300 SHRINE PARK ROAD 1000 NORTH 20TH STREET	1011101004040000 0782702004010000	SHRINE PARK PUD, S11, T09, R22E, ACRES 41.05, LT 6 EXC TR BEG NW COR LT 3, SW TO NW COR LT 2, SE180', NE636', SE42.4', SW691.5', NW144.5', N193.6', NE755.7', E123.2' TO POB Total SLOAN'S 2ND ADDITION, S27, T08, R22E, LT 3: EXC PT BEG 75.2'S OF NE COR LT 3; S10', W26.2', NE28.2' TO POB Total	\$2,700.00 \$410.00
EMD LEAVENWORTH LLC HERNANDEZ, KETZY	1000 EISENHOWER ROAD 50 LOGAN AVENUE	1061400002004030 1010104013009000	SOUTH CROSSROADS, S14, T09, R22E, BLOCK 1, Lot 2, ACRES 1.2 Total SOUTHSIDE PARK SUB, BLOCK 33, Lot 12 Total	\$432.97 \$2,492.37
STEPHENS, KEITH A & JUNG MI MATZEDER, ROBERT A GREEN, MICHAEL J	2705 SOUTH 2ND STREET 51 LOGAN AVENUE 1314 GRAND AVENUE	1010104014003020 1010104019001000 0773503022010000	SOUTHSIDE PARK SUB, S01, T09, R22E, BLOCK 32, S1/2 LTS 1 & 2 Total SOUTHSIDE PARK SUB, S01, T09, R22E, BLOCK 36, Lot 10 - 11 Total STILLING'S BLKS 12-17, BLOCK 13, Lot 38 Total	\$119.46 \$2,672.23 \$504.08
JIPSON, JOSHUA STONEHOUSE RENTALS INC	1230 10TH AVENUE 1308 KLEMP STREET	0773503020013000 0773503023013000	STILLING'S BLKS 12-17, BLOCK 15, S1/2 LT 45 & LTS 46-49 Total STILLING'S BLKS 12-17, S35, T08, R22E, BLOCK 12, Lot 46 - 47 Total	\$418.00 \$119.00
H&P DEVELOPMENT LLC RUTHERFORD, KASSANDRA DONALD, PHELPS M & ROSE M	1009 KENTON STREET 1410 10TH AVENUE 1118 KENTON STREET	0773503010004000 0773503030017000 0773503002009000	STILLING'S BLKS 4-8, S35, T08, R22E, BLOCK 6, N125.5' LTS 19 & 20. Total STILLING'S REPLAT, BLOCK 16, Lot 12 - 14 Total STILLING'S, BLKS 1-3, BLOCK 2, Lot 16 - 18 Total	\$2,758.22 \$146.00 \$658.62

ATTACHMENT A

Ordinance No. _____

Property Owner Name	Property Address	CAMA	Legal Description	Billed Amount
DONALD, PHELPS M & ROSE M	1122 KENTON STREET	0773503002008000	STILLING'S, BLKS 1-3, S35, T08, R22E, BLOCK 2, Lot 14 - 15 Total	\$132.28
PATTERSON, JAMES L	704 OSAGE STREET	0772604110028000	WESTERN ADDITION , BLOCK 91 , W16'LT 3 & ALL LTS 4&5. Total	\$133.38
H&P DEVELOPMENT LLC	351 SOUTH 14TH STREET	0783401012006000	WHITAKERS REPLAT CENTRAL, BLOCK 54, LTS 1-7 & VAC ALLEY ADJ Total	\$130.00
O'NEAL, KELLY M	1922 ROSE STREET	1010102030013000	WOLLMAN PLACE, S01, T09, R22E, LTS 16-19 & VAC ALLEY ADJ Total	\$155.69
COLLINS, RALPH (DEC'D) GORDEN, BETTY	1529 10TH AVENUE	1010201006005000	WOLLMAN'S SUB OF W1/2 BLK #4, S02, T09, R22E, Lot 13 - 15 Total	\$547.70
MIRANDA, MICHAEL W & SARAH	1024 TAMARISK DRIVE	1011103004016000	WOODS ON MUNCIE, S11, T09, R22E, BLOCK 1, Lot 16. Total	\$393.00
			Grand Total	\$91,946.37

POLICY REPORT

Review Unsafe and Dangerous Structures

AUGUST 27, 2019



Prepared By:
Julie Hurley,
Director of Planning and Community
Development



Reviewed By:
Paul Kramer,
City Manager

DISCUSSION

On May 14, 2019, the City Commission adopted Resolution B-2220 regarding demolition of 20 structures. At that time, the Commission voted to grant an extension to the owners of 11 properties to allow for completion of the needed work. On August 13, 2019, the Commission reviewed the structures that had been given extensions.

1. 1021 S. 2nd Street – Single family house

Property was approved for demolition. Since that time, local contractor Gabe Cotter has indicated to staff that he is under contract to purchase the property and intends to make all necessary repairs. Mr. Cotter has previously satisfactorily repaired properties on the demolition list, and attended the August 13th City Commission meeting for one such property. At that time he indicated that he was interested in several other properties on the demolition list, and was instructed by the Commission to contact staff if he purchased any.

2. 400 N. 5th Street – Mixed use building

Mark Swope, a representative of the owner, attended the August 13th City Commission meeting and indicated that he had recently become involved in the property. The Commission approved an extension of 14 days for the owner to either sign the Remediation agreement or for proof of change in ownership to be presented to staff. Staff provided Mr. Swope a copy of the Remediation Agreement the following day. As of Thursday, August 22, no further contact has been had with staff.

RECOMMENDED ACTION

- Motion to remove listed properties from demolition list.
- Motion to grant extension to complete repairs to listed properties.
- Motion to proceed with demolition of listed properties.

Determination of Unsafe or Dangerous Structure

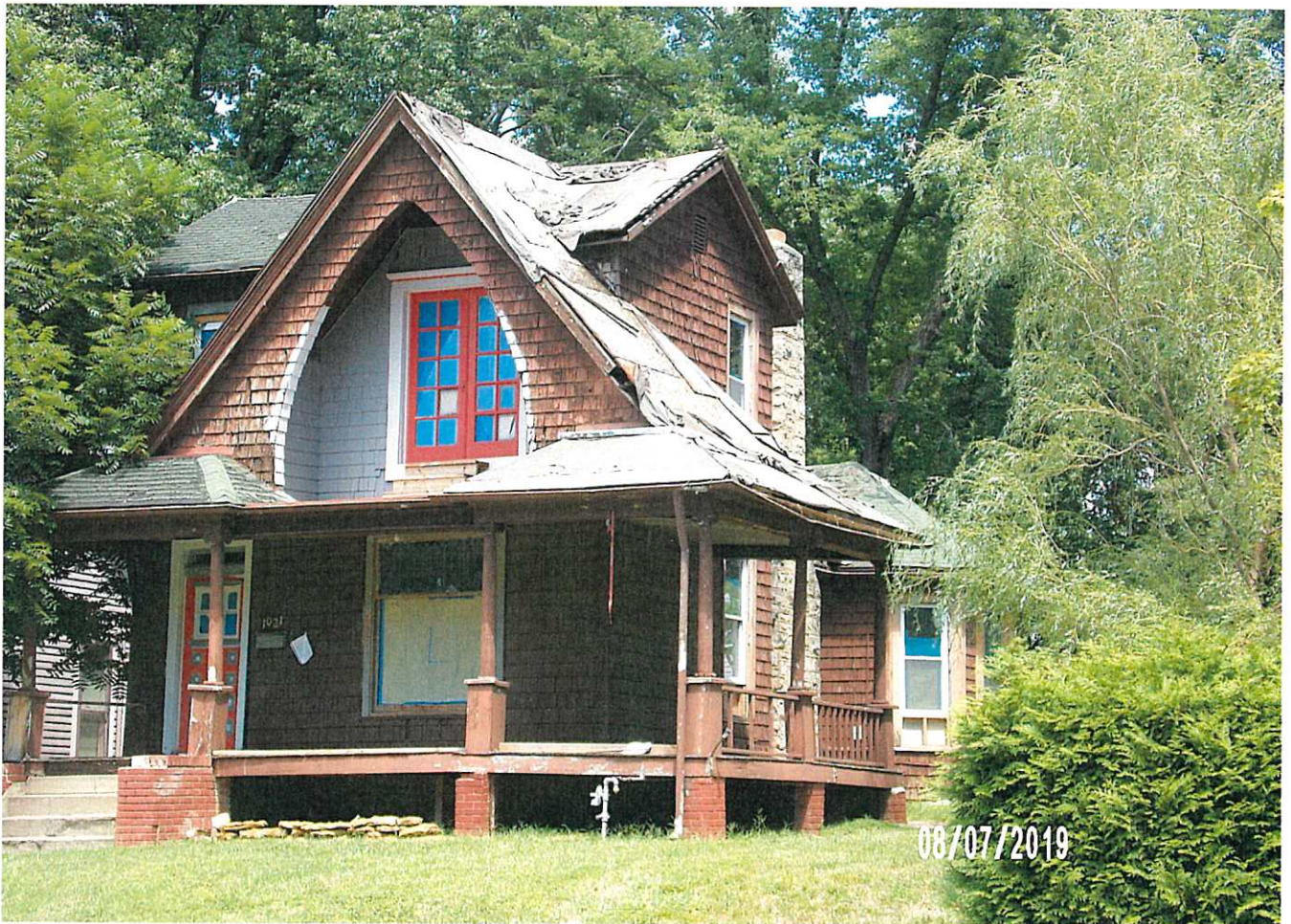
Address: 1021 S 2nd St			
Owner	Description	Taxes	Parcel Number
Janet Wiber	2 Story wood & Garage	Paid	052-077-36-0-40-01-007.00-0
Legal Description: FACKLERS ADDITION , BLOCK 1 , Lot 8			
Date of Inspection	Zoning	Parcel Size	
12/17/2018	R1-6	7650 Sq. Ft.	
# Code Violations	Last Court Appearance	Code Enforcement Officer	
4	N/A	Lee Burleson	

In accordance with KSA 17-4759, structures are deemed unfit for human use or habitation if conditions exist in such structure which are dangerous or injurious to the health, safety or morals of the occupants of such buildings or other residents within the City of Leavenworth, or which have a blighting influence on properties in the area. Such conditions may include, but are not limited to the following, which are found to be present at the subject property:

- Defects increasing the hazards of fire, accident or other calamities
 - Lack of adequate ventilation
 - Air pollution
 - Light or sanitary facilities
 - Dilapidation
 - Disrepair
 - Structural defects
 - Uncleanliness
 - Overcrowding
 - Inadequate ingress and egress
 - Dead and dying trees, limbs or other unsightly natural growth or unsightly appearances
 - Walls, sidings or exterior of a quality and appearance not commensurate with the character of the properties in the neighborhood
 - Unsightly stored or parked material, equipment, supplies, machinery, trucks or automobiles or parts thereof
 - Vermin infestation
 - Inadequate drainage
 - Any other violation of health, fire, building or zoning regulations
- Other:

On 6/7/18 they were issued a roofing permit. Very little progress has been done. W





Determination of Unsafe or Dangerous Structure

Address:	400 North 5th Street		
Owner	Description	Taxes	Parcel Number
Brian K. & Julia Rose Visocsky	2 STORY WOODEN APARTMENTS	\$762.26	0772503211012000
Legal Description: LEAVENWORTH,PLT ORIG, S25, T08, R22E, BLOCK 53, S1/2 LTS 15&16			
Date of Inspection	Zoning	Parcel Size	
2/1/19	R1-6	2956 SQ FT	
# Code Violations	Last Court Appearance	Code Enforcement Officer	
3	N/A	Kathy L. Rodgers	

In accordance with KSA 17-4759, structures are deemed unfit for human use or habitation if conditions exist in such structure which are dangerous or injurious to the health, safety or morals of the occupants of such buildings or other residents within the City of Leavenworth, or which have a blighting influence on properties in the area. Such conditions may include, but are not limited to the following, which are found to be present at the subject property:

- Defects increasing the hazards of fire, accident or other calamities
- Lack of adequate ventilation
- Air pollution
- Light or sanitary facilities
- Dilapidation
- Disrepair
- Structural defects
- Uncleanliness
- Overcrowding
- Inadequate ingress and egress
- Dead and dying trees, limbs or other unsightly natural growth or unsightly appearances
- Walls, sidings or exterior of a quality and appearance not commensurate with the character of the properties in the neighborhood
- Unsightly stored or parked material, equipment, supplies, machinery, trucks or automobiles or parts thereof
- Vermin infestation
- Inadequate drainage
- Any other violation of health, fire, building or zoning regulations

Other:

Last water service 3/5/12



PROPERTY REMEDIATION AGREEMENT

Owner: Brian K. & Julia Rose Visocsky
 Site Address: 400 North 5th Street
 Leavenworth, KS 66048

The owner(s) of the property located at 400 North 5th Street recognize that the property is in violation of the City’s Property maintenance ordinance(s). As such, they agree to bring the property in to compliance with City Ordinance standards, draw all necessary permits for the work to be performed, and meet the repair deadlines listed below. In return, the City agrees to stay the prosecution of any existing code violations, consider them abated after the property is found in compliance, and to work with the owners throughout this remediation process to help them resolve all code enforcement issues at the site.

	DEADLINE	TASK
1)	October 22, 2019 October 22, 2019	Roof – replace entire roof. Exterior staircase – replace/repair.
2)	October 22, 2019 October 22, 2019	Siding – replace/repair all exterior walls and sidings. Soffits & eaves – replace/repair all soffits and eaves.
3)	October 22, 2019	Windows & doors – replace/repair all windows & doors.
4)	October 22, 2019	Paint – remove all peeling paint and repaint entire exterior structure.
		Remove all dead and dying trees, limbs or other unsightly natural growth or unsightly appearances.

I (Print the Owner’s Name) _____ agree to honor the commitments as described above and understand that failure to do so may result in legal and remedial actions by the City of Leavenworth, possibly up to and including the demolition of unremediated structures. I also agree to maintain all yard areas by keeping the site free of junk and clutter, as well as excessive vegetation while I am remediating the property.

Notary Area

 Signature Date

Julie Hurley

From: Julie Hurley
Sent: Wednesday, August 14, 2019 2:48 PM
To: 'mark.swope@speedwaycdj.vinleads.com'
Cc: brianvisocsky@outlook.com; swopster@yahoo.com; Michelle Baragary; Kathy Rodgers
Subject: RE: Remediation Agreement for 400 5th st.
Attachments: 2019_Remediaton_Agreement_400_North 5th_St.doc

Hi Mark-

I have attached the Remediation Agreement to this email. The Agreement lists all items identified by staff that need to be addressed in order to remove the property from the demolition list. We need the Remediation Agreement signed by the owner and returned to our office by Tuesday, 8/27. Please let myself or Kathy Rodgers know if you have any questions.

Julie Hurley, AICP
Director of Planning and Community Development
City of Leavenworth
913.680.2616

From: Marl Swope <mark.swope@speedwaycdj.vinleads.com>
Sent: Wednesday, August 14, 2019 11:01 AM
To: Julie Hurley <jhurley@firstcity.org>
Cc: brianvisocsky@outlook.com; swopster@yahoo.com
Subject: Remediation Agreement for 400 5th st.

Mrs Hurley,

I attended the commission meeting last night and was told I needed a remediation agreement to act on behalf of Brian Visocsky, the property owner of 400 5th street. I have included his e mail and my personal e mail (cc). I would greatly appreciate it if you could send that agreement and any instructions. In addition It would be a big help if you could also send the punch list with the details of the city's expectations. Stay safe

Sincerely,

Mark Swope
913-683-9598
swopster@yahoo.com


2406 2nd
Leavenworth ks 66048

*** THIS EMAIL CAME FROM AN EXTERNAL SOURCE. PLEASE BE CAUTIOUS WHEN CLICKING ON LINKS OR ATTACHMENTS.




POLICY REPORT 19-03
Employee Benefit Plan Renewal
August 27, 2019

Prepared by:


Lona M. Lanter
HR Director

Reviewed by:


Paul R. Kramer
City Manager

ISSUE: Review and approve the recommendation for employee benefit coverages to be effective December 1, 2019.

STAFF RECOMMENDATION: Staff recommends renewal with current providers for medical, dental and vision for the new plan year beginning December 1, 2019. Current providers are: United HealthCare for medical and vision coverage and Delta Dental for dental coverage.

BACKGROUND: The City has maintained employee medical coverage through United HealthCare since December 1, 2005. UHC continues to demonstrate their ability to provide a long-term strategic partnership in health care with the City. The renewal bid from UHC, with no plan design changes, came in at a 14.5% premium increase. This renewal reflected well below what was calculated/required based on our experience rating. Based on the renewal quote and the intent to maintain a long-term relationship with one provider, it was apparent there would have to be plan design changes implemented.

The Employee Council met several times to discuss the renewal of medical, dental and vision coverage. Comments received were favorable in regards to staying with the same medical carrier. Input was requested from employees through their Employee Council representative on proposed changes to out-of-pocket maximums and co-insurance on the buy-up plan in order to impose as minimal impact as possible to employees and stay within budget. Based on the feedback received and consensus to remain with UHC, a market search was not conducted for medical coverage.

The final bid from UHC came in below the market trend and well under the formula requirement based on our experience over the past year. UHC has offered a renewal increase, with a plan design change to the out-of-pocket maximums for all three plans and a change to the co-insurance for the buy-up plan, of 8.1%, which is just slightly above the 8% amount that was budgeted for 2020. The overall plan designs remain unchanged with a three-tier, base, buy-up and high deductible option. However, the co-insurance for the current 90/70 buy-up plan will move from 10% co-insurance to 20% co-insurance for applicable services, changing the plan to an 80/70 from the current 90/70. The out-of-pocket maximums will also be increased by \$1,000 across all three offered plans. The

deductibles and co-pays and prescription coverage will all remain the same as what is currently in place. In order to meet the budgeted allowance of 8%, the employee share of premium for single coverage will be increased from 5% to 6% for the base plan.

The City renewed with Delta last year with a 5% increase and a 5% rate cap guarantee for 2020. The final renewal from Delta for 2020 came in with no premium increase and no plan design changes, which is below both the rate cap guarantee and the budgeted renewal increase. This is the final year for the 5% rate cap guarantee from Delta.

The City switched carriers for vision coverage last year and moved from VSP to UHC with enhanced vision benefits and reduced premiums. There has been positive feedback from the employees on the enhanced benefits and the renewal from UHC for vision coverage came in with no premium increase and no plan design changes.


Staff recommends that the City renew with UHC for medical coverage with the plan design changes identified above. Staff recommends that the City renew with Delta Dental for dental and UHC for vision with no plan design changes to either of these coverages.

If the Commission approves the Staff recommendations, the renewal date for the medical, dental and vision plans would be December 1, 2019. Due to the medical plan design changes, mandatory open enrollment sessions would be required and all employees would have to attend one of the sessions. Open enrollment informational meetings for employees and retirees will be scheduled for the first two weeks in October. As in the past, our benefit providers would be available during these informational meetings to answer any questions and/or provide additional information. Employee enrollment for dental and/or vision coverage would only be required for those employees interested in electing new coverage, dropping coverage or adding/dropping dependents from coverage.

BUDGET IMPACT: UHC is providing an 8.11% increase for medical and Delta Dental and UHC vision are both providing no increase to the current rates. This, in addition to the change of premium responsibility for single coverage, will allow renewal to come in slightly below the 2020 budgeted amount of 8%.

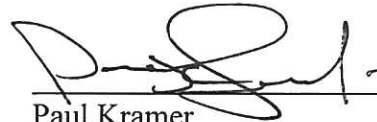
POLICY REPORT 19-04
Recommendation for Revisions to the
Personnel Policy Manual
August 27, 2019

Prepared by:



Lona M. Lanter
HR Director

Reviewed by:



Paul Kramer
City Manager

ISSUE:

Review and approve policy revisions to the City Personnel Policies & Procedures Manual, submitted by the Human Resources Director.

STAFF RECOMMENDATION: Staff recommends approval of the proposed revisions that would be effective immediately for Sections III and V and effective at the beginning of the new benefit plan year on December 1, 2019, for Section XVI.

BACKGROUND:

Periodically changes to The City of Leavenworth Personnel Manual are recommended. These changes can originate in any number of ways. The revisions listed below have originated from submission from Staff to update the policy. The revisions for Sections III and V are primarily housekeeping items and outline or more clearly identify the processes and procedures that are currently in place. The revision for Section XVI is a minor change to the current City contribution for single base plan medical coverage and increases the employee cost share from 5% to 6% of the premium. This change was made to provide the same high level of benefits coverage to employees while still adhering to the approved budget allocations for 2020.

REVISIONS TO CURRENT POLICY:

SECTION III – EMPLOYER AND EMPLOYEE RESPONSIBILITIES

III-4. SAFETY POLICY

Good safety practices and habits by the employees themselves are the best protection against work-related hazards. Each employee is expected to follow the basic safety procedures established by his/her department. All employees are required to operate City vehicles and equipment safely and in compliance with all municipal and state vehicular regulations.

A. *All employees are responsible for completion of the City of Leavenworth Accident Report Form immediately following any type of incident/accident, to include non-injury, injury, property damage or exposure. The employee is responsible for completing page 1 in its entirety and submitting to their supervisor as soon as possible, but by no later than 24 hours from the time of the incident. Supervisors are responsible for informing Human Resources at the time of incident and providing a copy of the Accident Report Form or an e-mail with a detailed description of the incident extent of any injury.*

B. *Any employee who is injured on-the-job and requires medical treatment MUST receive authorization from Human Resources prior to being seen by a physician, except in the case of life-threatening or severe injury, at which time they should be transported via ambulance or taken to the nearest ER.*

C. All operators of City vehicles and mobile equipment, as well as those who conduct city business via their personal vehicles, are required to have an appropriate and valid State Driver's License authorizing the operation of such vehicle, and must keep supervisors informed of any change of status in their license. **Failure to report such a change in status could result in disciplinary action, up to and including termination.**

D. Suspension or revocation of a driver's license of an employee who is assigned as a vehicle or mobile equipment operator must be reported to the employee's *supervisor or department head. Such instances will be reviewed on a case-by-case basis and may result in termination of employment if employee is no longer able to perform their essential job duties as a result of change in license status.*

E. Employees who are assigned tools, equipment, or vehicles by their departments are responsible for their proper use and maintenance.

F. Employees are forbidden to remove or deactivate safety guards or other protective devices from City equipment or vehicles unless written authorization is received from the department head.

G. The City Manager shall appoint a Safety Coordinator for the City. The Safety Committee shall meet on a monthly basis to review accidents involving personnel and equipment and make recommendations necessary to prevent such accidents from happening in the future. Recommendations ~~will~~ *may* be reviewed by the City Manager prior to implementation.

H. Each department head or superintendent should work with the Safety Committee, as required, to arrange and conduct safety meetings that will be beneficial to his/her departmental operations and reduce work, equipment and vehicle accidents. Employees will be held accountable for compliance with safety directives given by the *supervisor or department head* at employee meetings.

I. Any employee operating City equipment or vehicles must immediately report all traffic citations, vehicular accidents, and property damage or liability claims to his/her department head or superintendent. The department head will send the automobile accident or other loss notice to the *Human Resources and City Manager's office* to be reviewed.

J. All vehicular accidents must be reported to the Police Department, Sheriff's Department, or other appropriate agency, so that an official accident report can be filed.

K. The City may take disciplinary action against City employees found to have been negligent or reckless or to have caused unjustifiable damage to City equipment *or personal property.*

SECTION V – COMPENSATION

V-1. GENERAL POLICY

The City of Leavenworth has a market and performance based pay plan. It is market based in that the midpoint of any pay range represents the market position that the City Commission wants to pay for a City job with similar content. It is also market based in that each year the City's Human

Resources Department will conduct a review and possible update of all pay ranges. This update ~~will~~ *may* be based ~~on~~ *upon market trends and salary surveys* to determine movement in the marketplace of all jobs with similar content as jobs within the City's organization. *Market information may also result in the implementation of a CASI (Commission Approved Salary Increase) being awarded, which would provide an across-the-board increase for all eligible employees.* The pay plan is performance based in that pay increases ~~will be~~ *may be* awarded based upon an individual's performance level. Unless an employee is promoted, an employee will not receive a pay increase (performance increase) unless he/she has received a performance rating of at least the competent level or above. This policy will remain in effect unless the City Commission adopts a new pay plan.

V-2. PROCEDURE FOR DETERMINING PERFORMANCE INCREASES

Performance increases will only be awarded, *if applicable*, upon the completion and approval of a performance evaluation as per Section VII-2. of these Rules and Regulations. The exact percentage increases to be given will be dictated by the current pay increase chart, which shall be approved by the City Commission on an annual basis.

V-3. PROMOTION PAY INCREASES

Employees promoted into a position with a higher pay classification will receive the greater of a seven and one half percent (7-1/2%) increase or minimum pay for the classification. In the event that an employee is promoted more than one pay classification, s/he will be eligible for a seven and one half percent (7-1/2%) increase for each pay classification promoted, *to a maximum of 15%*, or the minimum pay for the classification ultimately promoted to, ~~or~~ whichever is greater. The promotion must be a logical progression within the employees department or division. For example, if an employee is promoted one pay classification, they are eligible for the greater of a seven and one half percent (7-1/2%) increase or minimum pay for the classification. If an employee were promoted two pay classifications, they would be eligible for the greater of a fifteen (15%) percent increase or minimum pay for the classification and so on. In addition, if the promoted employee has completed at least 90 days (one quarter) in his/her previous position since his/her last annual evaluation, the employee ~~will~~ *may* be eligible for a partial performance increase. For each completed quarter since the last annual evaluation, the employee ~~will~~ *would be eligible to* receive 25% of the performance increase, *if applicable*, that he/she would have received for one year of performance. Any variation must be approved by the City Manager.

A promoted employee will not be eligible for another performance increase, *if applicable*, until one year from the date of promotion.

SECTION XVI – EMPLOYEE BENEFITS

XVI-3. HEALTH AND DENTAL INSURANCE

A. Health Insurance:

1. For regular full time employees the City pays ~~95~~ 94% of the monthly premium for single base plan health coverage or 75% of the monthly premium for family or employee plus one base plan health coverage.

2. For regular part time employees the City pays 50% of the monthly premium for single base plan health coverage or 37 1/2% of the monthly premium for family or employee plus one base plan health coverage.

CITY OF LEAVENWORTH

TO: CITY COMMISSIONERS
FROM: JERMAINE WILSON, MAYOR
SUBJECT: CITY APPOINTMENTS
DATE: AUGUST 27, 2019

I move to appoint the following:

Leavenworth Main Street Program Board:

- Reappoint Melissa Bower to a term ending August 15, 2021
- Appoint Kenneth C Bateman to a term ending August 15, 2022

Leavenworth Preservation Commission:

- Appoint Richard Gibson to an unexpired term ending April 15, 2020

**RESOLUTION SETTING HEARING DATE FOR UNSAFE STRUCTURE
228-230 OTTAWA STREET**

AUGUST 27, 2019

Prepared by:



Harold D. Burdette,
Chief Building Inspector

Reviewed by:



Michael G. McDonald
Director of Public Works

Reviewed by:



Paul Kramer,
City Manager

ISSUE:

Consider a resolution setting October 22, 2019 as the date of a public hearing regarding a property containing an unsafe or dangerous structure in the City of Leavenworth.

BACKGROUND:

This structure was damaged by fire on June 25, 2019. This structure is a duplex and the damage was mostly to the 230 Ottawa portion of the building. The owner has obtained a building permit for the necessary repairs.

When structures are damaged by fire or other causes and the damage is severe enough that the settlement from the insurance company exceeds 75% of the face value of the policy covering the structure, the insurance company is required to draft a payment to the City of Leavenworth for 15% of the settlement. This money is to be used to either remove the structure if the owner decides not to repair it, or be returned to the property owner once repairs are completed and the structure is ready for occupancy. The City has received money in regards to this property.

The Chief Building Inspector recommends that proceedings under the provisions of K.S.A. 12-1750, et seq. should be commenced. Approval of this resolution setting the date of the public hearing is the first step in the process. This action will ensure that the City retains control over the proceeds from the fire insurance to assist with efforts to maintain the site.

Pursuant to the provisions of K.S.A. 12-1750, et seq., a public hearing is required to determine if the structure should be demolished or if the owners will commit to making improvements within a time frame acceptable to the City Commission. To establish the hearing date and to begin the legal service of notice process, the City Commission has to establish the hearing date by which assignees and owners must be notified. The legal rights are vested in the hearing and the City Commission should refrain from taking any testimony at this time in order to protect their legal rights in the process.

At the public hearing, the Commission will receive testimony for and against ordering the demolition of the structure. At the conclusion of the October 22, 2019 public hearing, the City Commission findings are adopted by resolution.

RECOMMENDATION: Motion to adopt Resolution No. B-2231 setting October 22, 2019 as the date for the public hearing regarding the unsafe structure located at 228-230 Ottawa Street.

ATTACHMENT:

Resolution No. B-2231

Photos of Exterior of 228-230 Ottawa

(To Be Published in the Leavenworth Times on September 3, 2019 and September 10, 2019)

RESOLUTION B-2231

A RESOLUTION OF THE CITY OF LEAVENWORTH, KANSAS, PROVIDING FOR NOTICE OF A PUBLIC HEARING AT WHICH TIME AND PLACE THE OWNER, HIS AGENT, LIEN HOLDERS OF RECORD, AND OCCUPANTS OF THE FIRE DAMAGED STRUCTURE HEREIN DESCRIBED MAY APPEAR TO SHOW CAUSE WHY SUCH STRUCTURE SHOULD NOT BE CONDEMNED AND ORDERED REPAIRED OR DEMOLISHED AS UNSAFE OR DANGEROUS STRUCTURE.

WHEREAS, pursuant to K.S.A 12-1750 et seq., as amended, the enforcing officer of the City of Leavenworth, Kansas, did on the 27th day of August 27, 2019, file with the governing body of said city a statement in writing that the structure hereinafter described is dangerous and hazardous and should be ordered by the governing body to be demolished or repaired; and

WHEREAS, on June 25, 2019 the hereinafter described structure was damaged by fire; and

WHEREAS, the City of Leavenworth is acting under Ordinance No. 8000, passed and approved by the Governing Body on July 12, 2016.

NOW THEREFORE BE IT RESOLVED BY THE GOVERNING BODY OF THE CITY OF LEAVENWORTH, KANSAS:

Section 1. That a Public Hearing shall be held on the 22nd day of October, 2019, before the Governing Body of the City of Leavenworth, Kansas, at 7:00 p.m. at the City Commission Room, 100 N 5th Street, Leavenworth, Kansas, at which time the owners, their agents, heirs, any lien holders of record and other persons affected by certain structures herein described may appear and show cause why such structure should or should not be condemned as a dangerous or hazardous structure and ordered repaired or demolished.

Section 2. The structure is described as: A multi-family structure located at **228-230 Ottawa Street**. The property is legally described as Lots 15, 16 Block 29 Leavenworth City Proper. Parcel 077-25-0-31-02-009.00-0

Section 3. The City Clerk and/or Chief Building Inspector are hereby authorized and directed to provide for the notice of the public hearing by taking the following action:

- a. A copy of this resolution shall be mailed by certified mail within three days after its first publication to each such owner, agent, lienholder and occupant at the last known address and shall be marked "deliver to addressee only."
- b. This resolution shall be published for two consecutive weeks; once on September 3, 2019 and once on September 10, 2019.

Section 4. This Resolution shall be effective upon its adoption by the City Commission of the City of Leavenworth, Kansas.

PASSED AND ADOPTED by the City Commission of the City of Leavenworth, Kansas this 27th day of August 2019.

Jermaine Wilson, Mayor

{SEAL}

ATTEST:

Carla K. Williamson CMC, City Clerk

